

RES10F20**Rev. 0****CHARACTERISTICS:**

Rated Voltage:	250VAC max
Rated Current at Ambient:	20A @ 40°C
Operating Frequency:	DC-400HZ
Climatic Class (IEC60068-1):	25/100/21
Temperature Range:	-25°C to +100°C
Over load Current:	1.5 x Rated Ct. for 1 Min
Operational Leakage current : (at 230VAC/50Hz and Total C +/-20%)	0.74 mA max
Worst case Leakage current : (N interrupted and Total C +/-20%)	<1.11 mA max
DCR @ 25°C (+/-25%) :	50 mΩ
Test Voltage (100%) for 2 sec:-	L-N: 1100VDC L-GND: 3000VDC
Ingress Protection:	IP 20
Weight (Approximate):	210 gr

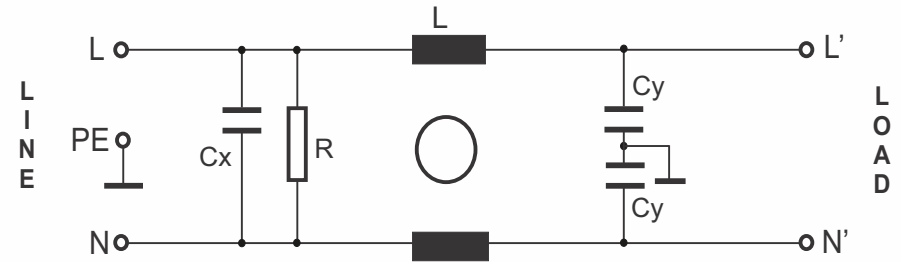
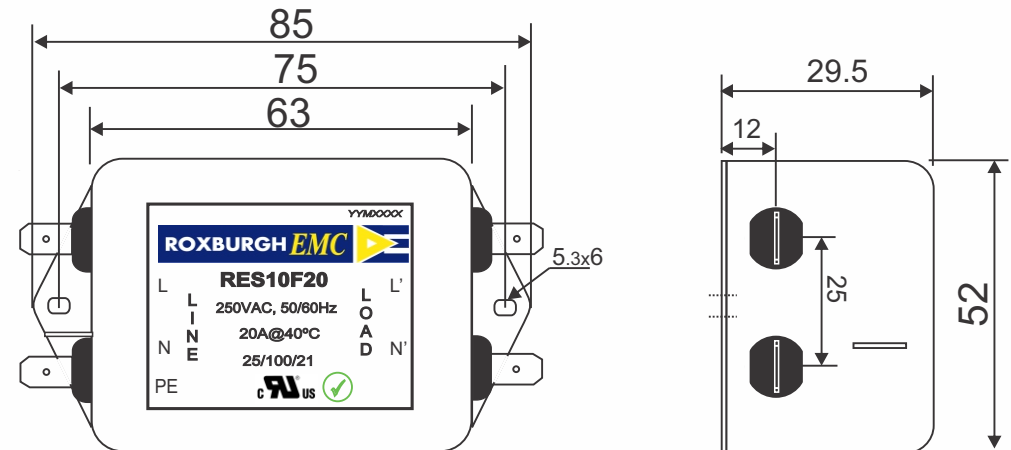
FILTER PARAMETERS:

Total Inductance (L-L'+N-N') @10KHz:	0.6mH +50%,-30%
Total Capacitance (L-L/L-N) @1KHz:	0.10μF +/- -20%
Total Capacitance (L/N-GND) @1KHz:	9.4nF +/- -20%
Total Resistance (L-L/L-N):	1M Ω +/- -10%
Total Resistance (L/N-GND):	

APPROVALS: REACH
RoHS
UL



APPROVED
BY
AJAY
Date: 28-03-2014

CIRCUIT DIAGRAM:**MECHANICAL DIMENSION (mm):****Note:**

Housing matl. Fe with Ni Plated
Fast-On Terminal (6.3 x 0.8mm)
RES10S20 (Optional screw M4)
Connections

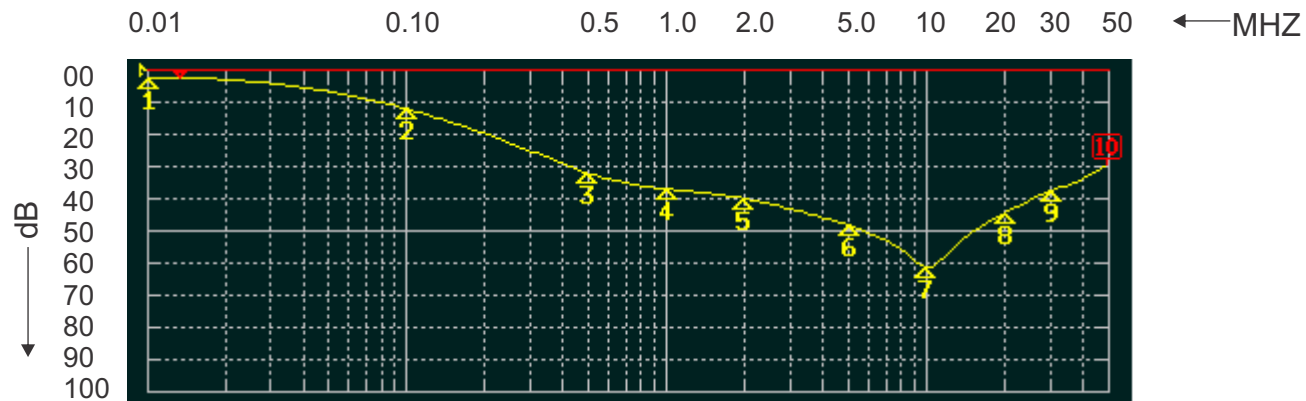
TOLERANCE: +/-1.0 mm



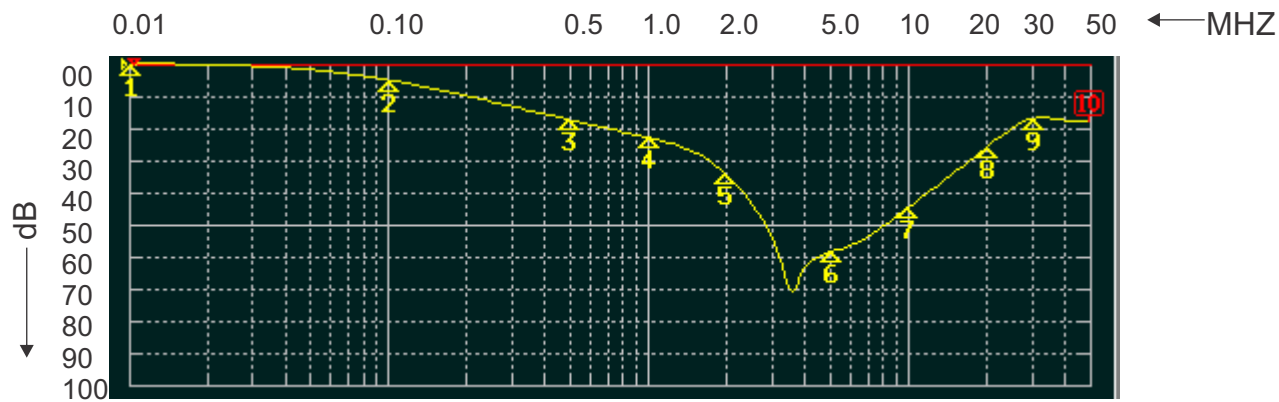
ROXBURGH EMC

FILTER INSERTION LOSS CHARACTERISTICS CISPR 17 - 50 OHM METHOD

RES10F20



COMMON MODE



DIFFERENTIAL MODE

