

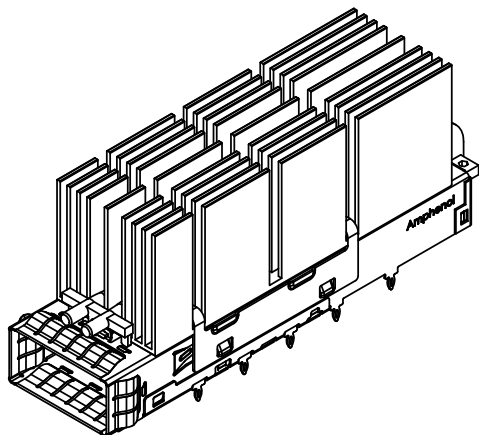
**CONDUCTIVE DUST COVER
SHOWN(OPTIONAL)
SHIPPED LOOSE
PN U90-1401-8000-BP**

**AMPHENOL PART NUMBER CONFIGURATION
UE36 - C162X 1 -06 XX X**

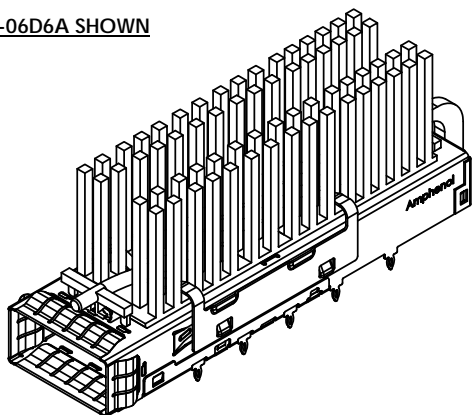
LIGHT PIPE OPTION
1 = SINGLE LIGHT PIPE
2 = DUAL LIGHT PIPE
4 = QUAD LIGHT PIPE
C = SINGLE LIGHT PIPE WITH COATING
E = DUAL LIGHT PIPE WITH COATING
F = QUAD LIGHT PIPE WITH COATING

PACKAGING OPTION
2 = TRAY PACKAGING, WITH DUST COVER
A = TRAY PACKAGING (HEAT SINK AND CLIP SHIPPED ASSEMBLED)

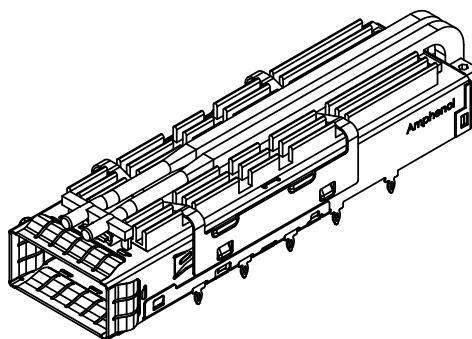
HEAT SINK OPTION
A2 = WITH FIN PIN STYLE HEAT SINK(H=4.2MM; PCI HEIGHT)
A3 = WITH FIN PIN STYLE HEAT SINK(H=6.5MM; SAN HEIGHT)
A4 = WITH FIN PIN STYLE HEAT SINK(H=13.5MM; TALL HEIGHT)
A5 = WITH FIN PIN STYLE HEAT SINK(H=4.5MM; SPECIAL HEIGHT)
A6 = WITH FIN PIN STYLE HEAT SINK(H=21.5MM; SPECIAL HEIGHT)
A7 = WITH FIN PIN STYLE HEAT SINK(H=8.6MM; SPECIAL HEIGHT)
B2 = WITH SQUARE PIN STYLE HEAT SINK(H=4.2MM; PCI HEIGHT)
B3 = WITH SQUARE PIN STYLE HEAT SINK(H=6.5MM; SAN HEIGHT)
B4 = WITH SQUARE PIN STYLE HEAT SINK(H=13.5MM; TALL HEIGHT)
BF = WITH SQUARE PIN STYLE HEAT SINK(H=19.5MM; SPECIAL HEIGHT)
D6 = WITH FIN PIN STYLE HEAT SINK(H=21.5MM; SPECIAL HEIGHT, TOTAL 9 FINS)
D9 = WITH FIN PIN STYLE HEAT SINK(H=7.5MM; SPECIAL HEIGHT, TOTAL 9 FINS)
DF = WITH FIN PIN STYLE HEAT SINK(H=19.3MM; SPECIAL HEIGHT, TOTAL 9 FINS)



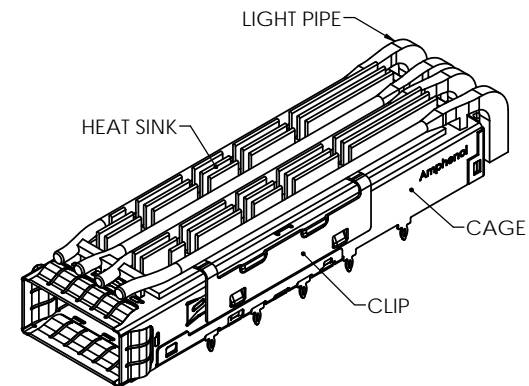
PN: UE36-C162(2,E)1-06D6A SHOWN



PN: UE36-C162(1,C)1-06BFA SHOWN



PN: UE36-C162(2,E)1-06A5A SHOWN



PN: UE36-C162(4,F)1-06A3A SHOWN

REVISIONS			
REV	DESCRIPTION, ECN, EAR NO.	DATE	APP'D
A	INITIAL RELEASE	AUG.7, 20	Arkady.Z
B	ADD HEAT SINK OPTION "DF"	MAY.31, 21	Arkady.Z

NOTES:

- MATERIAL:**
 CAGE AND EMI SPRINGS: COPPER ALLOY
 HEAT SINK: NICKEL PLATED ALUMINUM ALLOY
 HEAT SINK CLIP: STAINLESS STEEL
 LIGHT PIPE: GE LEXAN RESIN, CLEAR OPTICAL GRADE
 DUST COVER: CONDUCTIVE RUBBER

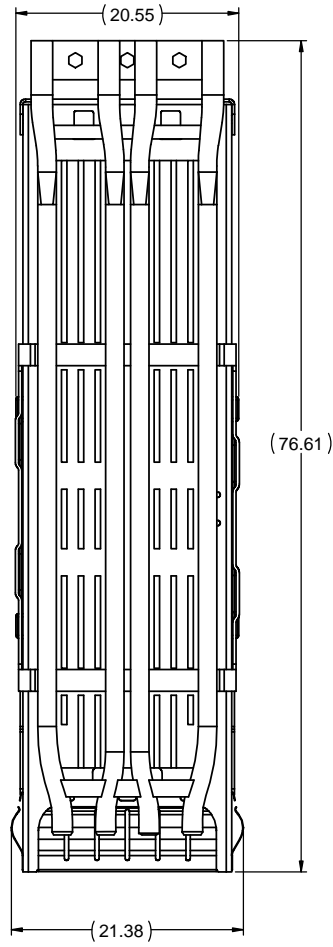


UNLESS SPECIFIED OTHERWISE	DRAWN	Peter.Z	AUG.7, 20
UNIT	CHECKED	Chigow X	AUG.7, 20
REFERENCE IN PARENTHESES	M.E. APP'D		
	Q.A. APP'D		
GENERAL TOLERANCES	DWG APP'D	Arkady Z	AUG.7, 20
1 DECIMAL PLACE	ENG. REL. NO.	-	
2 DECIMAL PLACES	REF.		
ANGULAR DEGREES	THIRD ANGLE PROJECTION		
	DO NOT SCALE DRAWING		

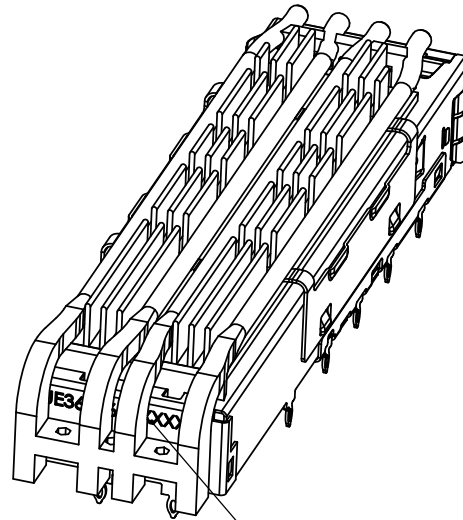
Amphenol High Speed Interconnects
 A Division of Amphenol Corp. www.amphenol-highspeed.com
 QSFP-DD 1X1 CAGE ASSEMBLY
 THROUGH THE BEZEL
 WITH HEAT SINK&LIGHT PIPE OPTION
 WITH EMBOSSES ON BOTTOM CAGE

THIS DOCUMENT CONTAINS PROPRIETARY INFORMATION AND SUCH INFORMATION MAY NOT BE DISCLOSED TO OTHERS FOR ANY PURPOSE OR USED FOR MANUFACTURING PURPOSES WITHOUT WRITTEN PERMISSION FROM AMPHENOL CANADA CORP.

DWG. NO.	REV
P-UE36-C162X1-06XXX	B
CODE ID NO. 03554	DWG SIZE: C
SCALE: 1:1	SHEET 1 OF 5

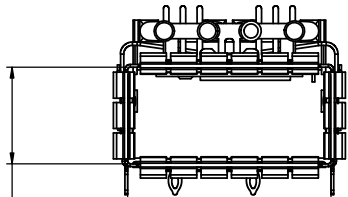


PN: UE36-C16241-06A3A SHOWN



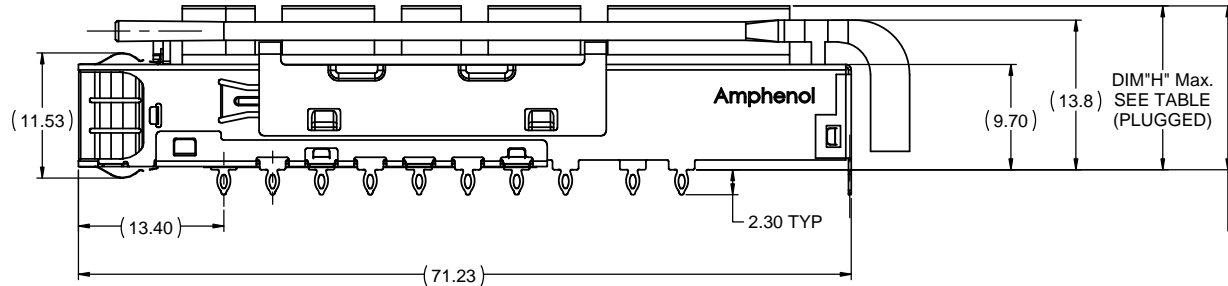
INK MARK PART NUMBER AND DATE CODE

PART NUMBER	DIM "H"	DIM "H1"
UE36C162X106X2X	13.70MM	12.8MM
UE36C162X106X3X	16.00MM	15.1MM
UE36C162X106X4X	23.00MM	22.1MM
UE36C162X106X5X	14.00MM	13.1MM
UE36C162X106X6X	31.00MM	30.1MM
UE36C162X106X7X	18.00MM	17.1MM
UE36C162X106X9X	17.00MM	16.1MM
UE36C162X106XFX	29.00MM	28.1MM



8.90^{+0.20}_{-0.10}
(INSIDE TO INSIDE OF CAGE)

18.75±0.10
(INSIDE TO INSIDE OF CAGE)



DIM"H" Max.
SEE TABLE
(PLUGGED)

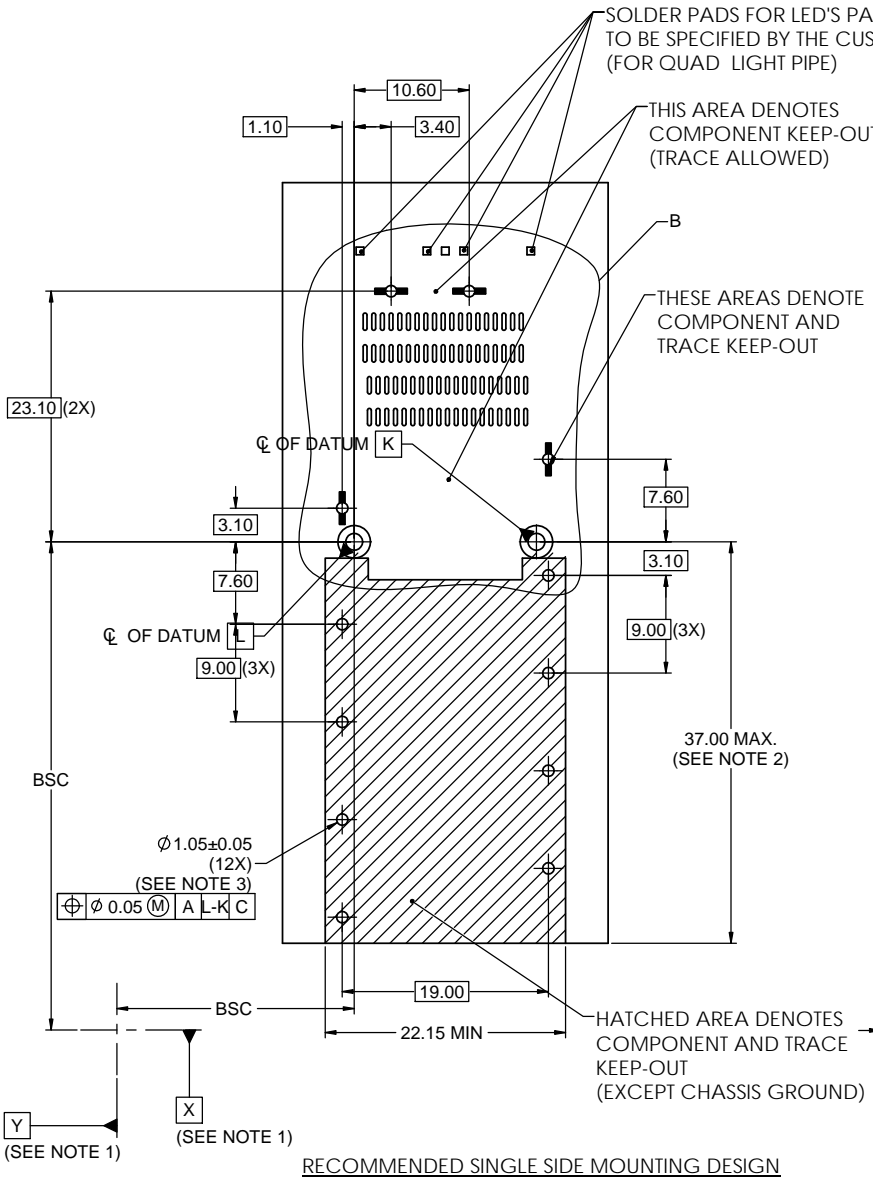
DIM"H1"
SEE TABLE
(UNPLUGGED)

UNLESS SPECIFIED OTHERWISE	DRAWN	Peter.Z	AUG.7, 20
UNIT	CHECKED	Chigow X	AUG.7, 20
REFERENCE IN PARENTHESES	M.E. APP'D		
GENERAL TOLERANCES	Q.A. APP'D		
1 DECIMAL PLACE	DWG APP'D	Arkady Z	AUG.7, 20
2 DECIMAL PLACES	ENG. REL. NO.	-	
ANGULAR DEGREES	REF.		
	THIRD ANGLE PROJECTION		
	DO NOT SCALE DRAWING		

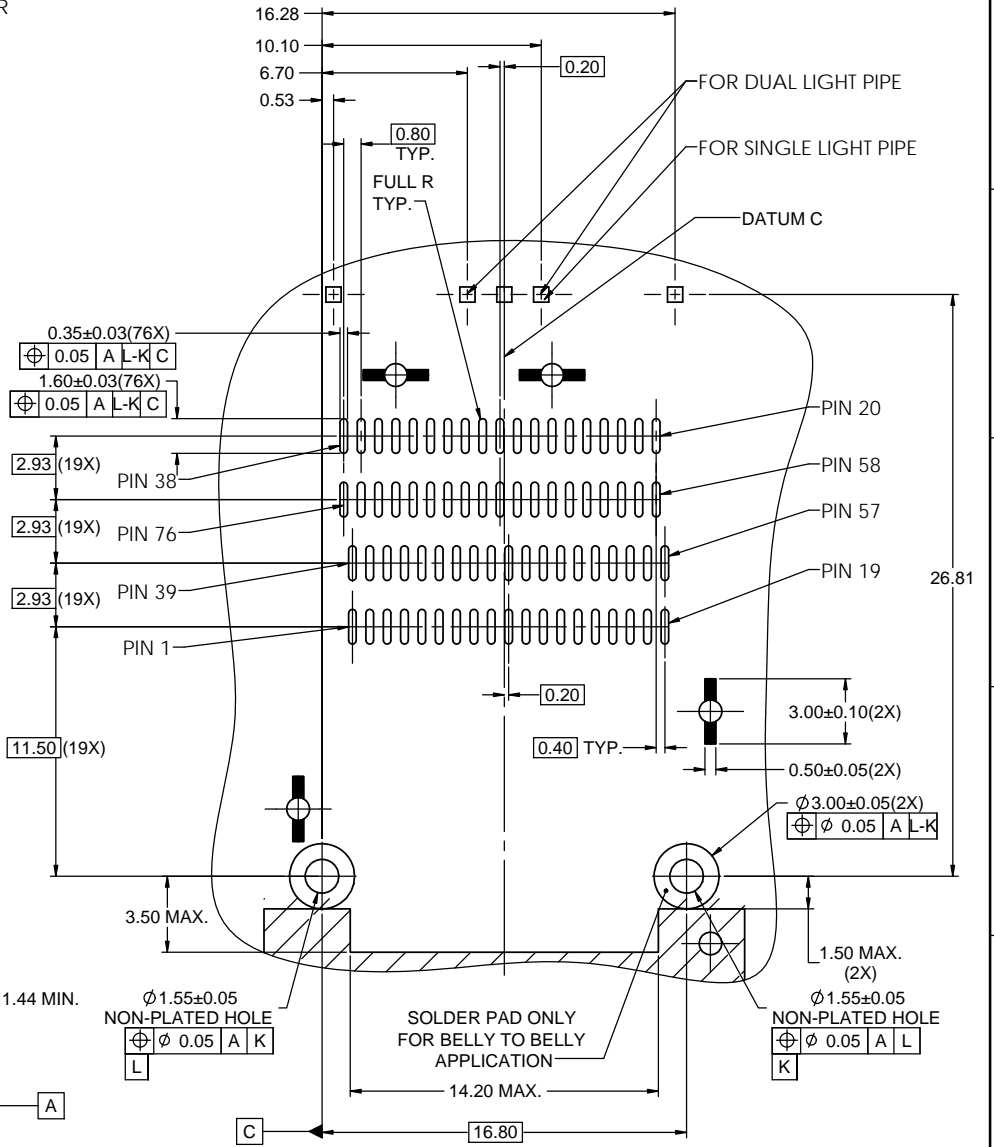
Amphenol High Speed Interconnects
A Division of Amphenol Corp. www.amphenol-highspeed.com
QSFP-DD 1X1 CAGE ASSEMBLY
THROUGH THE BEZEL
WITH HEAT SINK & LIGHT PIPE OPTION
WITH EMBOSSES ON BOTTOM CAGE

DWG. NO.	REV
P-UE36-C162X1-06XXX	B
CODE ID NO. 03554	DWG SIZE: C
SCALE: 2:1	SHEET 2 OF 5

THIS DOCUMENT CONTAINS PROPRIETARY INFORMATION AND SUCH INFORMATION MAY NOT BE DISCLOSED TO OTHERS FOR ANY PURPOSE OR USED FOR MANUFACTURING PURPOSES WITHOUT WRITTEN PERMISSION FROM AMPHENOL CANADA CORP.



RECOMMENDED SINGLE SIDE MOUNTING DESIGN



DETAIL B
SCALE 6 : 1

- NOTES:
- DATUMS X AND Y ESTABLISHED BY CUSTOMER'S FIDUCIAL.
 - LOCATION OF EDGE OF PCB IS APPLICATION SPECIFIC.
 - FINISHED HOLE SIZE.

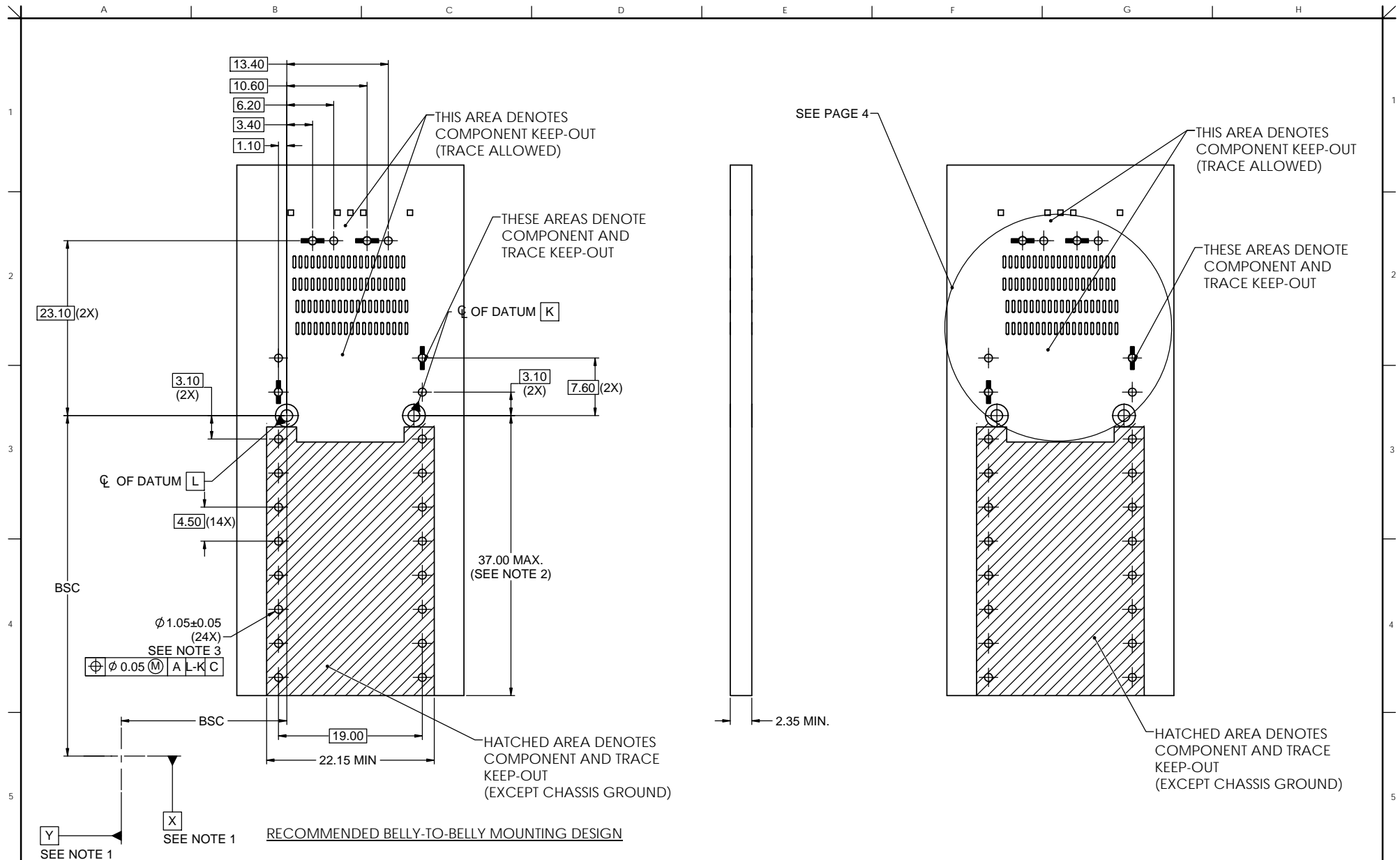
THIS DOCUMENT CONTAINS PROPRIETARY INFORMATION AND SUCH INFORMATION MAY NOT BE DISCLOSED TO OTHERS FOR ANY PURPOSE OR USED FOR MANUFACTURING PURPOSES WITHOUT WRITTEN PERMISSION FROM AMPHENOL CANADA CORP.

UNLESS SPECIFIED OTHERWISE	DRAWN	Peter.Z	AUG.7, 20
UNIT	CHECKED	Chigow X	AUG.7, 20
REFERENCE IN PARENTHESES	M.E. APP'D		
GENERAL TOLERANCES	Q.A. APP'D		
1 DECIMAL PLACE	DWG APP'D	Arkady Z	AUG.7, 20
2 DECIMAL PLACES	ENG. REL. NO.	-	
ANGULAR DEGREES	REF.		
	THIRD ANGLE PROJECTION		
	DO NOT SCALE DRAWING		

Amphenol High Speed Interconnects
 A Division of Amphenol Corp. www.amphenol-highspeed.com
QSFP-DD 1X1 CAGE ASSEMBLY THROUGH THE BEZEL WITH HEAT SINK&LIGHT PIPE OPTION WITH EMBOSSSES ON BOTTOM CAGE

DWG. NO. **P-UE36-C162X1-06XXX** REV **B**

CODE ID NO. **03554** DWG SIZE: **C** SCALE: **2:1** SHEET **3** OF **5**



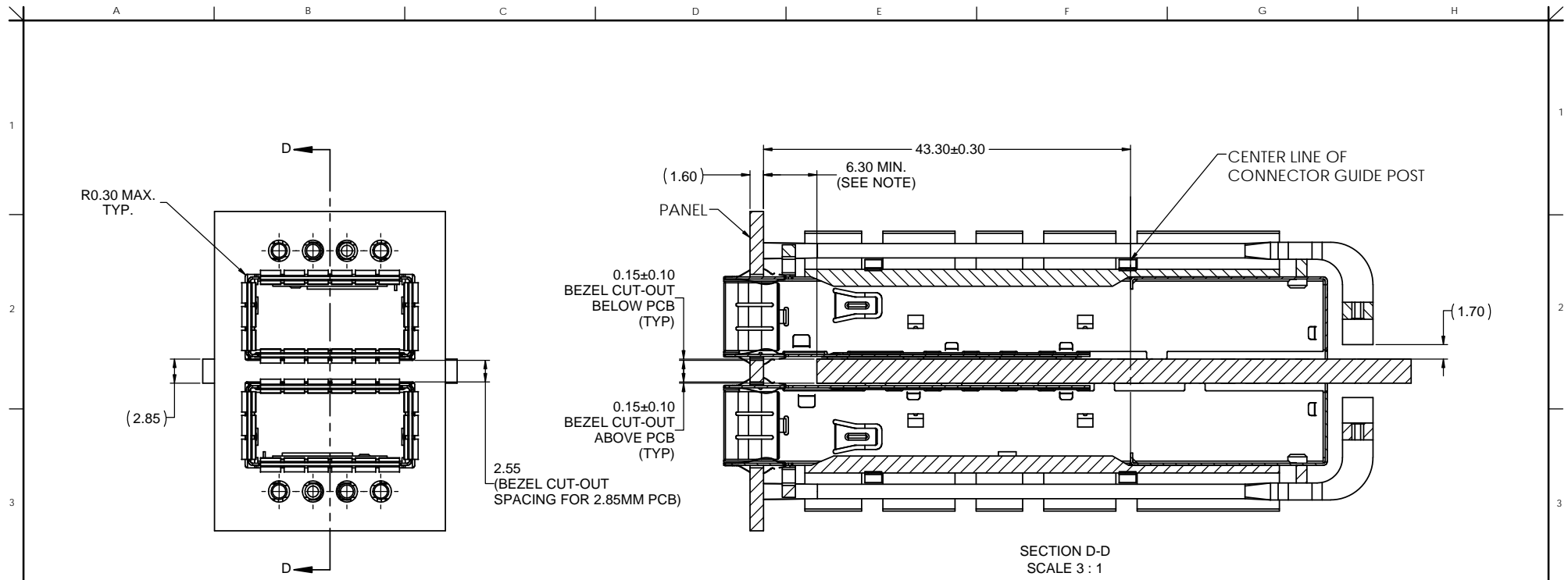
RECOMMENDED BELLY-TO-BELLY MOUNTING DESIGN

- NOTES:
1. DATUMS X AND Y ESTABLISHED BY CUSTOMER'S FIDUCIAL.
 2. LOCATION OF EDGE OF PCB IS APPLICATION SPECIFIC.
 3. FINISHED HOLE SIZE.

THIS DOCUMENT CONTAINS PROPRIETARY INFORMATION AND SUCH INFORMATION MAY NOT BE DISCLOSED TO OTHERS FOR ANY PURPOSE OR USED FOR MANUFACTURING PURPOSES WITHOUT WRITTEN PERMISSION FROM AMPHENOL CANADA CORP.

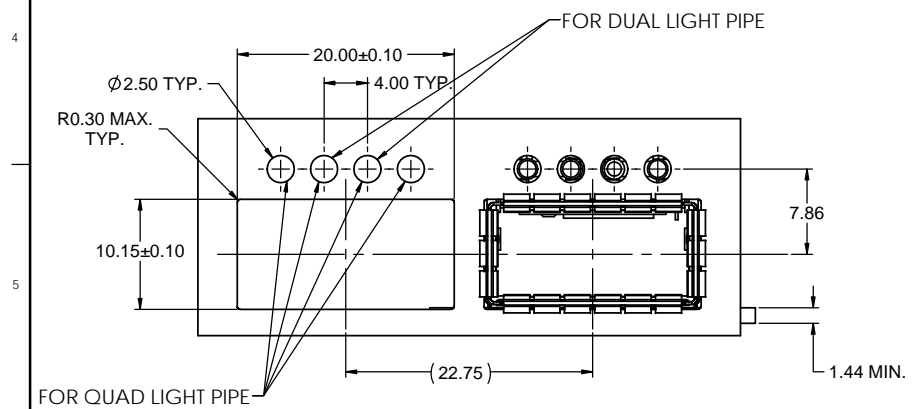
UNLESS SPECIFIED OTHERWISE	DRAWN	Peter.Z	AUG.7, 20
UNIT	CHECKED	Chigow X	AUG.7, 20
REFERENCE IN PARENTHESES	M.E. APP'D		
	Q.A. APP'D		
GENERAL TOLERANCES	DWG APP'D	Arkady Z	AUG.7, 20
1 DECIMAL PLACE	ENG. REL. NO.	-	
2 DECIMAL PLACES	REF.		
ANGULAR DEGREES	THIRD ANGLE PROJECTION		
	DO NOT SCALE DRAWING		

Amphenol High Speed Interconnects			
A Division of Amphenol Corp. www.amphenol-highspeed.com			
QSFP-DD 1X1 CAGE ASSEMBLY THROUGH THE BEZEL WITH HEAT SINK&LIGHT PIPE OPTION WITH EMBOSSES ON BOTTOM CAGE			
DWG. NO.	P-UE36-C162X1-06XXX		REV B
CODE ID NO.	03554	DWG SIZE: C	SCALE: 2:1 SHEET 4 OF 5

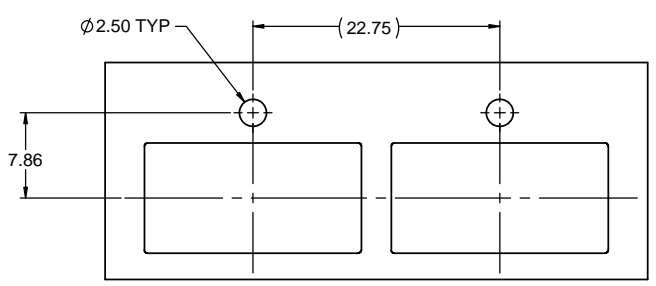


SECTION D-D
SCALE 3 : 1

RECOMMENDED BELLY-TO-BELLY MOUNTING DESIGN



RECOMMENDED SINGLE SIDE MOUNTING DESIGN



RECOMMENDED SINGLE SIDE MOUNTING DESIGN
FOR SINGLE LIGHT PIPE

NOTES:
LOCATION OF EDGE OF PCB IS APPLICATION SPECIFIC.

THIS DOCUMENT CONTAINS PROPRIETARY INFORMATION AND SUCH INFORMATION MAY NOT BE DISCLOSED TO OTHERS FOR ANY PURPOSE OR USED FOR MANUFACTURING PURPOSES WITHOUT WRITTEN PERMISSION FROM AMPHENOL CANADA CORP.

UNLESS SPECIFIED OTHERWISE	DRAWN	Peter.Z	AUG.7, 20
UNIT	MILLIMETERS	CHECKED	Chigow X
REFERENCE IN PARENTHESES	M.E. APP'D		AUG.7, 20
GENERAL TOLERANCES	Q.A. APP'D		
1 DECIMAL PLACE	DWG APP'D	Arkady Z	AUG.7, 20
2 DECIMAL PLACES	ENG. REL. NO.		
ANGULAR DEGREES	REF.		
	THIRD ANGLE PROJECTION		
	DO NOT SCALE DRAWING		

Amphenol High Speed Interconnects			
A Division of Amphenol Corp. www.amphenol-highspeed.com			
QSFP-DD 1X1 CAGE ASSEMBLY THROUGH THE BEZEL WITH HEAT SINK&LIGHT PIPE OPTION WITH EMBOSES ON BOTTOM CAGE			
DWG. NO.	P-UE36-C162X1-06XXX		REV B
CODE ID NO.	03554	DWG SIZE: C	SCALE: 2:1 SHEET 5 OF 5