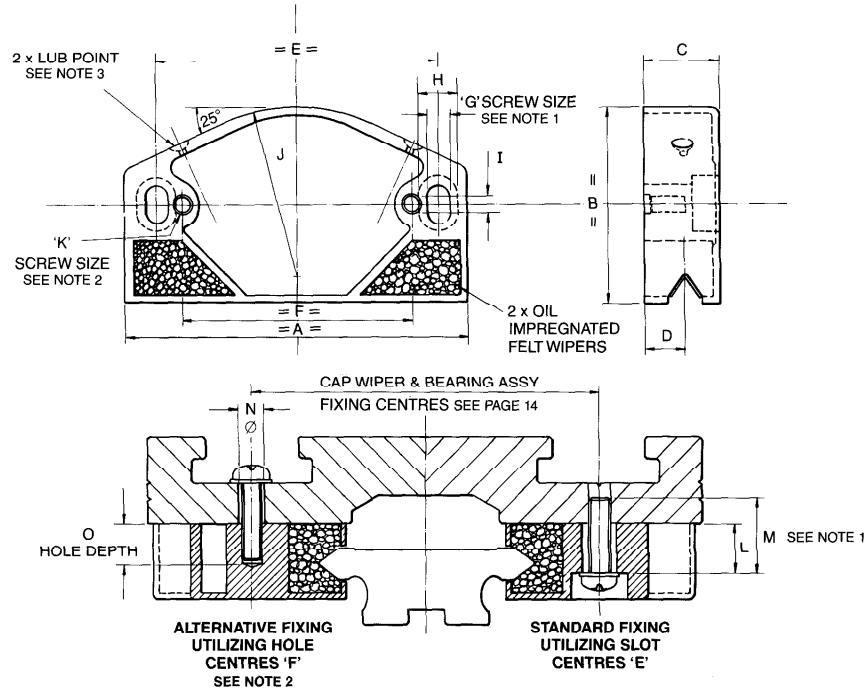


CAP WIPERS

The Hepco CM series cap wiper is manufactured from rigid impact resistant polyacetal plastic and provides constant lubrication to slide and bearing contact surfaces by means of the oil impregnated felt inserts and grease reservoir surrounding the bearing thereby significantly increasing the load/life of the system (see load/life section, Pages 18-22). The cap wiper has the additional benefits of aiding the exclusion of debris and improving operational safety and appearance.



PART No.	FOR USE WITH SLIDE / BEARING COMBINATION	A	B	C	D	± 0.1 E	± 0.1 F	G	H	I	J	K	L	M	N	O	MASS~ g
CW265	NC/C / SJ/LJ 25 / 265C/E	54	30	13	6.8	44	35	M3	6.5	2.5	28	M3	10	15.5	4	8.5	10
CW360	NC/C / SJ/LJ 44 / 360C/E	72	40.5	15.5	8.3	59	48	M4	8.5	3	38	M4	10	15.5	5	9	20
CW580	NC/C / SJ/LJ 76 / 580C/E	106	63	14.3	14.3	90	74	M5	10.5	3.5	60	M5	20	29	6	18	55

ALL DIMENSIONS IN MM

NOTES:

- Two self-tapping fixing screws plus washers are supplied with each cap wiper to suit predrilled Hepco carriage plate.
- Alternative plain fixing holes suitable for tapping, or self-tap screws. Carriage plate should be clearance drilled or slotted to provide adjustment (Ref: 'N' dimension).
- Male grease connector Part No. CSCHF4034, or complete gun available from Hepco if required. Lubricate at least every three months or 50 km of linear travel with a No. 2 Lithium soap based grease BP Energrease LT2 or equivalent.

ORDERING DETAILS. Simply specify the part numbers and quantities required.

EXAMPLE: 4 x CW 265.