

# Datasheet

## s.120

### 3/8"-4 brass check valves



#### Quality:

- Suitable for domestic, industrial, pneumatic and hydraulic installations
- Performs well in any orientation

#### Body:

- Low pressure drop
- Hot forged CW617N brass body

#### Stem:

- Nylon stem allows wide range of applications

#### Seals:

- NBR 65 SH/PS seal on nylon holder

#### PED Directives:

- The product described in this document meets the requirements of PED Directive 97/23 and according to art.3 par.3, it does not require CE marking; it cannot be used with dangerous gases in sizes larger than 25mm

#### Threads:

- ISO 228 parallel female by female threads

#### Working Pressure:

- 12 Bar up to 1", 10 Bar from 1.1/4" up to 2" and 8 Bar over 2"
- non-shock cold working pressure

#### Working Temperature:

- -20°C / +100°C
- Warning: freezing of the fluid in the installation may severely damage the valve

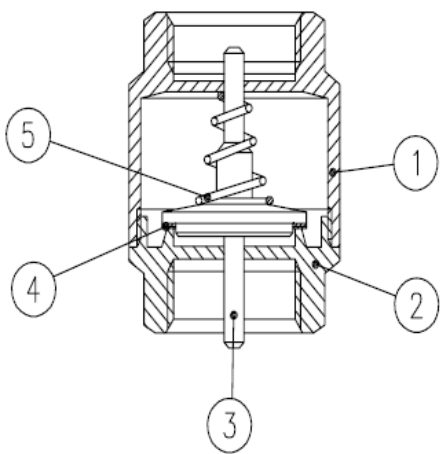
#### Options:

- Stainless steel AISI 304 filter

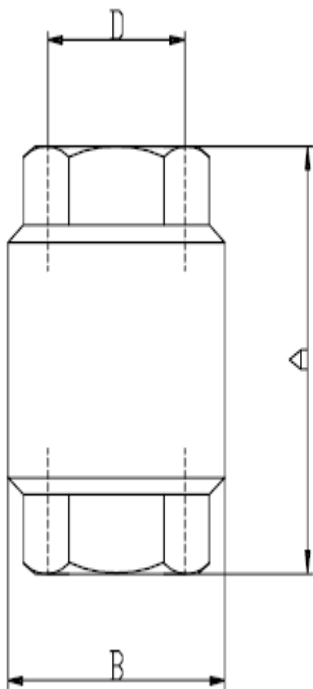
**Approved by or in compliance with:**

- GOST-R (Russia)
- Hygiene and epidemic center in Moscow city (Russia)
- RoHS Compliant
- EAC - Declaration of conformity (Russia-Kazakhstan-Belarus)

**NOTE:** Approvals apply to specific configurations/sizes only.



Part Description	Q.ty	Material
1 Body	1	CW617N
2 End cap	1	CW617N
3 Stem-seat	1	Nylon
4 Seat	1	NBR
5 Stainless steel spring	1	AISI302



Code	120C00	120D00	120E00	120F00	120G00	120H00	120I00	120L00	120M00	120N00
D (inch)	3/8	1/2	3/4	1	1 1/4	1 1/2	2	2 1/2	3	4
A (mm)	46.5	47	53	60.5	66.5	74	80	98	103	118.5
B (mm)	34.5	34.5	42	47.5	59.5	71	86.5	102	125	155
PN(Kg/cm <sup>2</sup> )	12	12	12	12	10	10	10	8	8	8