

ELR H51-IES-24DC500AC-3-IFS - Hybrid motor starter



1151618

<https://www.phoenixcontact.com/in/products/1151618>

Please be informed that the data shown in this PDF document is generated from our online catalog. Please find the complete data in the user documentation. Our general terms of use for downloads are valid.



Hybrid motor starter; functions: start motor, reverse motor, motor protection, emergency stop, network capable, short-circuit protection; input: 24 V DC; output: 3~, 500 V AC, 3 A; connection method: screw and Push-in connection; connection to the Interface system

Commercial data

Item number	1151618
Packing unit	1 pc
Minimum order quantity	1 pc
Sales key	*****
Product key	DK7456
GTIN	4063151149079
Weight per piece (including packing)	490 g
Weight per piece (excluding packing)	350 g
Customs tariff number	85371098
Country of origin	DE

Technical data

Product properties

Product type	Hybrid motor starters
Product family	CONTACTRON
Operating mode	100% operating factor

Insulation characteristics: Standards/regulations

Pollution degree	2
------------------	---

Electrical properties

Number of phases	3
Motor starter type	Reversing starter
Switching frequency	≤ 2 Hz (Load-dependent)
Maximum power dissipation for nominal condition	2.5 W
Switching frequency	≤ 2 Hz (Load-dependent)
Maximum power dissipation	4.1 W
Minimum power dissipation	0.88 W
Coordination type	1

Supply

Rated control circuit supply voltage U_S	24 V DC
Control supply voltage range	19.2 V DC ... 30 V DC
Rated control supply current I_S	60 mA
Protective circuit	Surge protection Reverse polarity protection; Parallel polarity protection diode

Insulation characteristics

Rated insulation voltage	550 V
Rated surge voltage	6 kV
Overvoltage category	III
Degree of pollution	2
Insulation characteristics between control input voltage and control supply voltage to main circuit	Safe isolation (IEC 60947-1)

Emergency tripping

Operate threshold	> 33 A
Response time	< 0.5 s

Input data

Control

Input name	Enable input
------------	--------------

Note	The enable input is compatible with signals with blanking (semiconductor output signals with test pulse with max. 3 ms duration), unblanking pulses of max. 4 ms are tolerated without adversely affecting the safety function.
Rated actuating voltage U_C	24 V DC
Triggering voltage range	19.2 V DC ... 30 V DC
Rated actuating current I_C	7 mA
Switching threshold	9.6 V ("0" signal)
	19.2 V ("1" signal)
Switching level	< 5 V DC (For EMERGENCY STOP)
Typical turn-off time	< 30 ms
Protective circuit	Reverse polarity protection

Output data

AC output

Rated operating voltage U_e	500 V AC
Operating voltage range	42 V AC ... 550 V AC
Rated operating current I_e	3 A (AC-51)
	3 A (AC-53a)
Mains frequency	50/60 Hz
Load current range	180 mA ... 3 A (see to derating)
Trigger characteristic in acc. with IEC 60947-4-2	Class 10
Cooling time	20 min (for auto reset)
Leakage current	0 mA
Protective circuit	Surge protection; Varistor

Connection data

Control circuits

Connection method	Push-in connection
Stripping length	10 mm
Conductor cross section rigid	0.2 mm ² ... 2.5 mm ²
Conductor cross section flexible	0.2 mm ² ... 2.5 mm ²
Conductor cross section AWG	24 ... 14

Load circuit

Connection method	Screw connection
Stripping length	8 mm
Screw thread	M3
Conductor cross section rigid	0.2 mm ² ... 2.5 mm ²
Conductor cross section flexible	0.2 mm ² ... 2.5 mm ²
Conductor cross section AWG	24 ... 14
Tightening torque	0.5 Nm ... 0.6 Nm
	5 lb _F -in. ... 7 lb _F -in.

ELR H51-IES-24DC500AC-3-IFS - Hybrid motor starter



1151618

<https://www.phoenixcontact.com/in/products/1151618>

Signaling

Status display	LED (yellow)
Operating voltage display	Green LED
Error indication	Red LED

Dimensions

Width	22.5 mm
Height	160 mm
Depth	114.5 mm

Material specifications

Flammability rating according to UL 94	V0 (Housing)
--	--------------

Environmental and real-life conditions

Ambient conditions

Degree of protection	IP20
Ambient temperature (operation)	-5 °C ... 60 °C (observe derating)
Ambient temperature (storage/transport)	-40 °C ... 80 °C
Altitude	≤ 2000 m

Approvals

UKCA

Certificate	UKCA-compliant
-------------	----------------

Category (ISO 13849)

Identification	≤ 3
Note	Safe shutdown

UL approval

Certificate	NLDX.E228652
	NRNT.E172140

Safety Integrity Level (SIL, IEC 61508)

Identification	≤ 3
Note	Safe shutdown

Performance Level (ISO 13849)

Identification	e
Note	Safe shutdown

UL data

SCCR	100 kA (480 V AC (fuse: 30 A class CC/30 A class J (high fault))) 5 kA (480 V AC (fuse: 20 A RK5 (standard fault)))
FLA	3 A (480 V AC)
Group installation	20 A (class RK5, SCCR 5kA (480 V AC), #24 - 14 AWG max.

ELR H51-IES-24DC500AC-3-IFS - Hybrid motor starter



1151618

<https://www.phoenixcontact.com/in/products/1151618>

	solid and stranded)
	30 A (class CC or J, SCCR 100kA (480 V AC), #24 - 14 AWG max, solid and stranded)
Category code	NLDX / NRNT
Horsepower ratings	0.5 hp (120 V AC / 208 V AC)
	1.5 hp (277 V AC / 480 V AC)

Standards and regulations

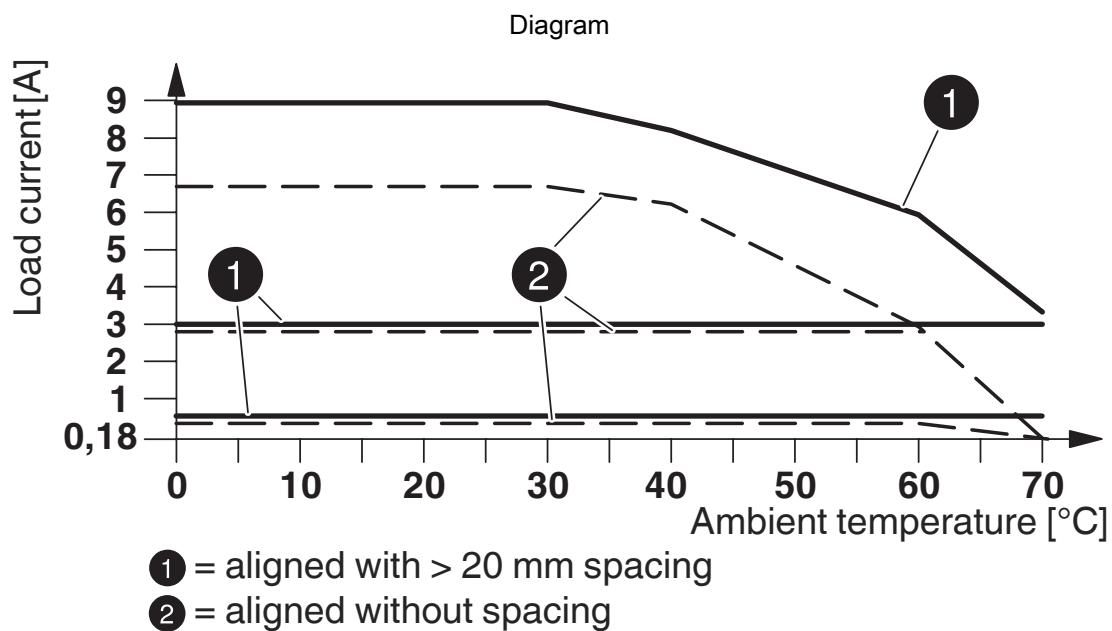
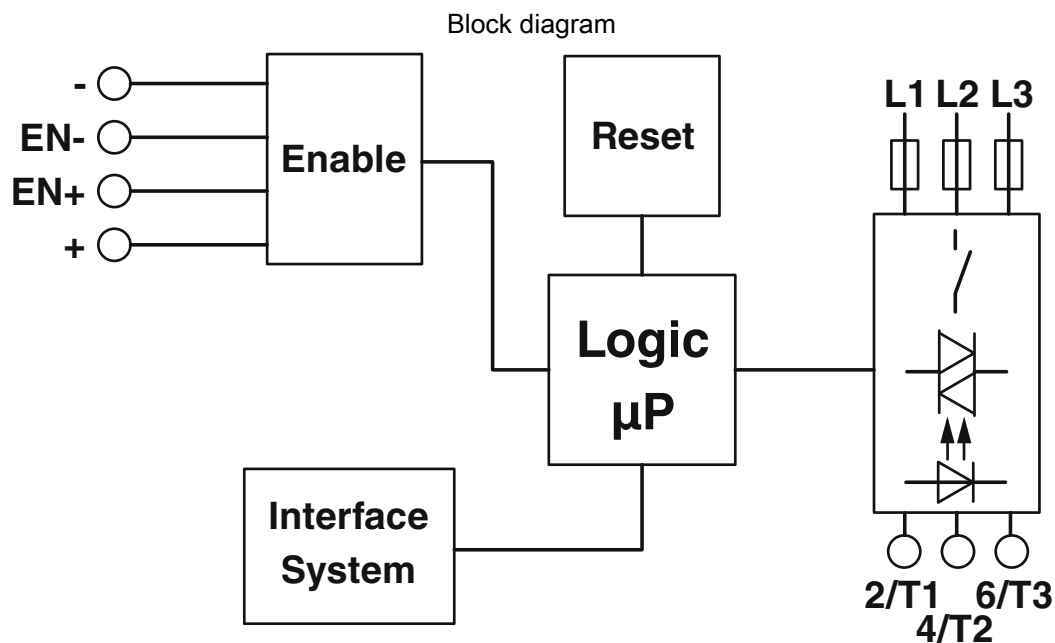
Standards/regulations

Standards/regulations	IEC 60947-1
	EN 60947-4-2
	IEC 61508
	ISO 13849-1

Mounting

Assembly note	alignable, for spacing see derating
Mounting position	vertical (horizontal DIN rail, motor output below)

Drawings



Derating diagram

ELR H51-IES-24DC500AC-3-IFS - Hybrid motor starter



1151618

<https://www.phoenixcontact.com/in/products/1151618>

Approvals

To download certificates, visit the product detail page: <https://www.phoenixcontact.com/in/products/1151618>



UL Listed

Approval ID: FILE E 172140



cUL Listed

Approval ID: FILE E 172140



cUL Listed

Approval ID: E228652



UL Listed

Approval ID: E228652

ELR H51-IES-24DC500AC-3-IFS - Hybrid motor starter



1151618

<https://www.phoenixcontact.com/in/products/1151618>

Classifications

ECLASS

ECLASS-11.0	27370905
ECLASS-13.0	27370905
ECLASS-12.0	27370905

ETIM

ETIM 9.0	EC001037
----------	----------

UNSPSC

UNSPSC 21.0	25173900
-------------	----------

Environmental product compliance

EU RoHS

Fulfills EU RoHS substance requirements	Yes
Exemption	7(a), 7(c)-I

China RoHS

Environment friendly use period (EFUP)	EFUP-50
	An article-related China RoHS declaration table can be found in the download area for the respective article under "Manufacturer declaration". For all articles with EFUP-E, no China RoHS declaration table issued and required.

EU REACH SVHC

REACH candidate substance (CAS No.)	Lead(CAS: 7439-92-1)
SCIP	d819ae02-79a0-4dc0-b2d2-b41f08574493

ELR H51-IES-24DC500AC-3-IFS - Hybrid motor starter



1151618

<https://www.phoenixcontact.com/in/products/1151618>

Mandatory accessories

EM RD-ADAPTER - Adapter

2902747

<https://www.phoenixcontact.com/in/products/2902747>

Adapter for mounting short circuit-proof hybrid motor starters of type ELR-H51 ... on 35 mm DIN rails.



EM-PB-GATEWAY-IFS - Data interface

2297620

<https://www.phoenixcontact.com/in/products/2297620>

Gateway for the connection of up to 32 Interface system devices to a higher-level controller via PROFIBUS DP. The Interface system devices are connected to the gateway via DIN rail connectors. The DIN rail connectors are provided.



ELR H51-IES-24DC500AC-3-IFS - Hybrid motor starter



1151618

<https://www.phoenixcontact.com/in/products/1151618>

EM-CAN-GATEWAY-IFS - Data interface

2901504

<https://www.phoenixcontact.com/in/products/2901504>



Gateway for the connection of up to 32 Interface system devices to a higher-level controller via CANopen®. The Interface system devices are connected to the gateway via DIN rail connectors. The DIN rail connectors are provided.

EM-MODBUS-GATEWAY-IFS - Data interface

2901528

<https://www.phoenixcontact.com/in/products/2901528>



Gateway for the connection of up to 32 Interface system devices to a higher-level controller via Modbus/TCP. The Interface system devices are connected to the gateway via DIN rail connectors. The DIN rail connectors are provided.

ELR H51-IES-24DC500AC-3-IFS - Hybrid motor starter



1151618

<https://www.phoenixcontact.com/in/products/1151618>

EM-PNET-GATEWAY-IFS - Data interface

2904472

<https://www.phoenixcontact.com/in/products/2904472>



Gateway for the connection of up to 32 Interface system devices to a higher-level controller via PROFINET. The Interface system devices are connected to the gateway via DIN rail connectors. The DIN rail connectors are provided.

EM-ETH-GATEWAY-IFS - Data interface

2901988

<https://www.phoenixcontact.com/in/products/2901988>



Gateway for the connection of up to 32 Interface system devices to a higher-level controller via EtherNet/IP™. The Interface system devices are connected to the gateway via DIN rail connectors. The DIN rail connectors are provided.

ELR H51-IES-24DC500AC-3-IFS - Hybrid motor starter



1151618

<https://www.phoenixcontact.com/in/products/1151618>

EM-PSAFE-GATEWAY-IFS - Data interface

1188207

<https://www.phoenixcontact.com/in/products/1188207>



Gateway for the connection of up to 15 Interface system devices to a higher-level safe controller via PROFIsafe. The system devices are connected to the gateway via DIN rail connectors. The DIN rail connectors are provided.

Accessories

EBP 2- 5 - Insertion bridge

1733169

<https://www.phoenixcontact.com/in/products/1733169>

Insertion bridge for connectors with 5.0 mm or 5.08 mm pitch



ELR H51-IES-24DC500AC-3-IFS - Hybrid motor starter



1151618

<https://www.phoenixcontact.com/in/products/1151618>

EM-CPS-BRIDGE-IFS-GY-16 - Wire bridge

1191990

<https://www.phoenixcontact.com/in/products/1191990>

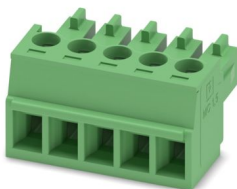
Wire bridge for connecting up to 16 type ELR H51...IFS hybrid motor starters to the Interface system. With single and TWIN ferrules included for easy shortening and extending.



MC 1,5/ 5-ST-3,81 - PCB connector

1803604

<https://www.phoenixcontact.com/in/products/1803604>



PCB connector, nominal cross section: 1.5 mm², color: green, nominal current: 8 A, rated voltage (III/2): 160 V, contact surface: Sn, contact connection type: Socket, number of potentials: 5, number of rows: 1, number of positions: 5, number of connections: 5, product range: MC 1,5/-ST, pitch: 3.81 mm, connection method: Screw connection with tension sleeve, screw head form: L Slotted, conductor/PCB connection direction: 0 °, plug-in system: COMBICON MC 1,5, locking: without, mounting method: without, type of packaging: packed in cardboard

ELR H51-IES-24DC500AC-3-IFS - Hybrid motor starter



1151618

<https://www.phoenixcontact.com/in/products/1151618>

FUSE-10X38-30A-MR - Fuse

2903119

<https://www.phoenixcontact.com/in/products/2903119>



Fuse, number: 10 Pcs., fuse type: Fuse (CC), nominal current: 30 A, tripping characteristic: fast-blow (F)

FUSE-10X38-20A-GR - Fuse

2903384

<https://www.phoenixcontact.com/in/products/2903384>



Fuse, number: 10 Pcs., fuse type: Fuse (CC), nominal current: 20 A, tripping characteristic: super-fast blow (gR)

ELR H51-IES-24DC500AC-3-IFS - Hybrid motor starter



1151618

<https://www.phoenixcontact.com/in/products/1151618>

FUSE-10X38-16A-GR - Fuse

2903126

<https://www.phoenixcontact.com/in/products/2903126>



Fuse, number: 10 Pcs., fuse type: Fuse (CC), nominal current: 16 A, tripping characteristic: super-fast blow (gR)

Phoenix Contact 2025 © - all rights reserved

<https://www.phoenixcontact.com>

PHOENIX CONTACT (I) Pvt. Ltd.

A-58/2, Okhla Industrial Area, Phase - II, New Delhi-110 020

+91.1275.71420

info@phoenixcontact.co.in