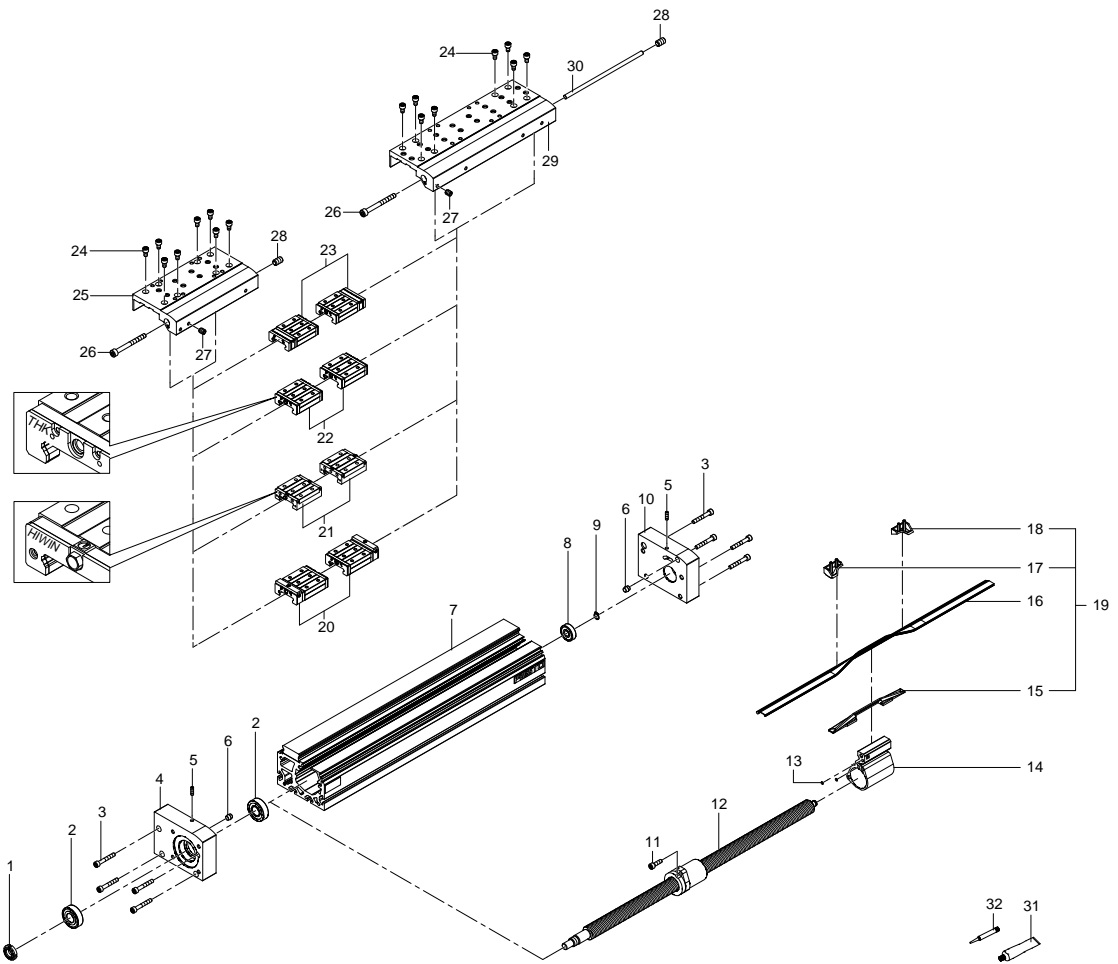


3013571 EGC-120-100-BS-10P-KF-0H-ML-GK Ball screw axis - Series: All



3013571 EGC-120-100-BS-10P-KF-0H-ML-GK Ball screw axis - Series: All

Pos.	Part no.	Type	Note	Qty.	Unit
1	717740	GUA 16X1 Grooved nut		1	PC
2		DIN 628-7203-B-2RS Angular ball bearing	Not available separately, see position 998	2	PC
3	200129	ISO 4762-M6X40-10.9 Socket head screw	Tightening torque 12 Nm / 8.9 lbf ft Use locking compound. See position 32	8	PC
4	717778	EGC-120-BS: LI clevis foot		1	PC
5	385199	ISO 4026-M5X16-45H Threaded pin	Tightening torque 0.5 Nm / 0.4 lbf ft Use locking compound. See position 32	2	PC
6	371076	9,9X10,0 Buffer element		2	PC
7		EGC-120-BS-KF Cylinder barrel module	Not available	1	PC
8		XF+D625-6200-2RS Deep groove ball bearing	Not available separately, see position 998	1	PC
9	200618	DIN 471-10X1 Retaining ring		1	PC
10	717760	EGC-120-BS: RE Bearing cap		1	PC
11	200688	ISO 4762-M6X20-10.9 Socket head screw	Tightening torque 3.5 Nm / 2.6 lbf ft Use locking compound. See position 32	1	PC
12	743155	EGC-120- -YB- Ball screw	When ordering please specify the configuration (see type plate) Repair note: Spindle_support	1	PC
13	711161	3X1-N-NBR70 O-ring		2	PC
14	722882	EGC-120-BS Retainer module	Attention, please order position 13 as well	1	PC
15		EGC-120-BS: U Belt reversal	Not available separately, see position 19	1	PC
16	743146	EGC-120- -YA- Cover strip	When ordering please specify the configuration (see type plate) Grease using during assembly. See position 31	1	PC
17		EGC-120/185-BS: O_LI Belt reversal	Not available separately, see position 19	1	PC
18		EGC-120/185-BS: O_RE Belt reversal	Not available separately, see position 19	1	PC
19	739504	EGC-120-BS ET Belt reversal		1	PC
20	736906	EGC-120-KF-GK/GV-C/GR_L4 Roller carriage	Attention! It is essential that the information in the repair manual be closely observed! Grease using during assembly. See position 31	1	PC
21	8087522	EGC-120GK/GV_DGC40/50_L2 Roller carriage	Attention! It is essential that the information in the repair manual be closely observed! Grease using during assembly. See position 31	1	PC
22	716521	EGC-120-KF-GK/GV_L4 Roller carriage	Attention! It is essential that the information in the repair manual be closely observed! Grease using during assembly. See position 31	1	PC
23	722902	EGC-120-KF-GP/GQ_L4 Roller carriage	Attention! It is essential that the information in the repair manual be closely observed! Grease using during assembly. See position 31	1	PC
24	200683	ISO 4762-M6X10-10.9 Socket head screw	Tightening torque 15 Nm / 11.1 lbf ft Use locking compound. See position 32	8	PC
25	717790	EGC-120-BS-KF-GK/GP Slide module		1	PC
26	213340	ISO 4762-M6X80-10.9 Socket head screw	Tightening torque 14 Nm / 10.3 lbf ft Use locking compound. See position 32	1	PC

Pos.	Part no.	Type	Note	Qty.	Unit
27	232491	ISO 4026-M6X6-45H Threaded pin	Use locking compound. See position 32	1	PC
28	350502	ISO 4026-M10X10-45H Threaded pin	Tightening torque 3.5 Nm / 2.6 lbf ft Use locking compound. See position 32	1	PC
29	717794	EGC-120-BS-KF-GV/GQ Slide module		1	PC
30	717744	EGC-120-BS Rod		1	PC
31	684474	LUB-KC1 SILIKONFREI 20ML Lubricating grease		1	PC
32	8181256	CYBERBOND TM44 TB1ML Adhesive bonding agent		1	PC
99 8	739508	EGC/ELGA-120-BS ET Bearing module		1	PC