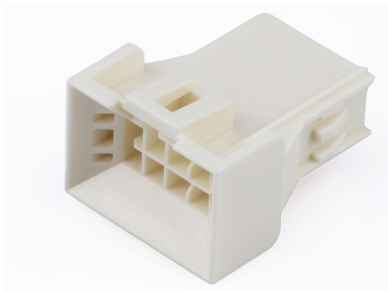




**Part Number :** [2245561308](#)  
**Product Description :** Nano-Fit BMI Plug Housing, TPA Capable, 2.50mm Pitch, Dual Row, 8 Circuits, Natural, Glow-Wire Capable  
**Series Number :** 224556  
**Status :** Active  
**Product Category :** Connector Housings



Documents & Resources


**Drawings**  
[2245561308\\_sd.pdf](#)  
[2245561000-PK-000.pdf](#)

**3D Models and Design Files**  
[2245561308\\_stp.zip](#)

**Specifications**  
[AS-105300-100-001.pdf](#)  
[2014471000-PS-000.pdf](#)

Product Environment Compliance

Compliance

GADSL/IMDS	Not Relevant
China RoHS	
EU ELV	Not Relevant
Low-Halogen Status	Not Low-Halogen per IEC 61249-2-21
REACH SVHC	Not Contained per D(2024)6225-DC (07 Nov 2024)
EU RoHS	Compliant per EU 2015/863

Multiple Part Product Compliance Statements  
- Eu RoHS  
- REACH SVHC  
- Low-Halogen

Multiple Part Industry Compliance Documents  
- IPC 1752A Class C

- IPC 1752A Class D
- Molex Product Compliance Declaration
- IEC-62474
- chemSHERPA (xml)

## EU RoHS Certificate of Compliance

---

### Part Details

#### General

Status	Active
Category	Connector Housings
Series	224556
Description	Nano-Fit BMI Plug Housing, TPA Capable, 2.50mm Pitch, Dual Row, 8 Circuits, Natural, Glow-Wire Capable
Application	Power, Wire-to-Wire
Product Name	Nano-Fit BMI
UPC	196823686856

#### Physical

Circuits (maximum)	8
Color - Resin	Natural
Gender	Plug
Glow-Wire Capable	Yes
Keying to Mating Part	Yes
Lock to Mating Part	Yes
Material - Resin	Nylon
Net Weight	1.680/g
Number of Rows	2
Packaging Type	Bag
Panel Mount	No
Pitch - Mating Interface	2.50mm
Pitch - Termination Interface	2.50mm
Polarized to Mating Part	Yes
Temperature Range - Operating	-40° to +125°C

---

## Mates With / Use With

### Mates with Part(s)

Description	Part Number
Nano-Fit Receptacle Housing, TPA Capable, 2.50mm Pitch, Dual Row, 8 Circuits, Natural, Glow-Wire Capable	<u>1053082208</u>
Nano-Fit BMI Receptacle Housing, 2.50mm Pitch, Dual Row, 8 Circuits, Natural, Glow-Wire Capable	<u>2192682208</u>

### Use with Part(s)

Description	Part Number
Nano-Fit Male Crimp Terminals	<u>201447</u>
Nano-Fit Terminal Position Assurance (TPA) Retainers	<u>105325</u>