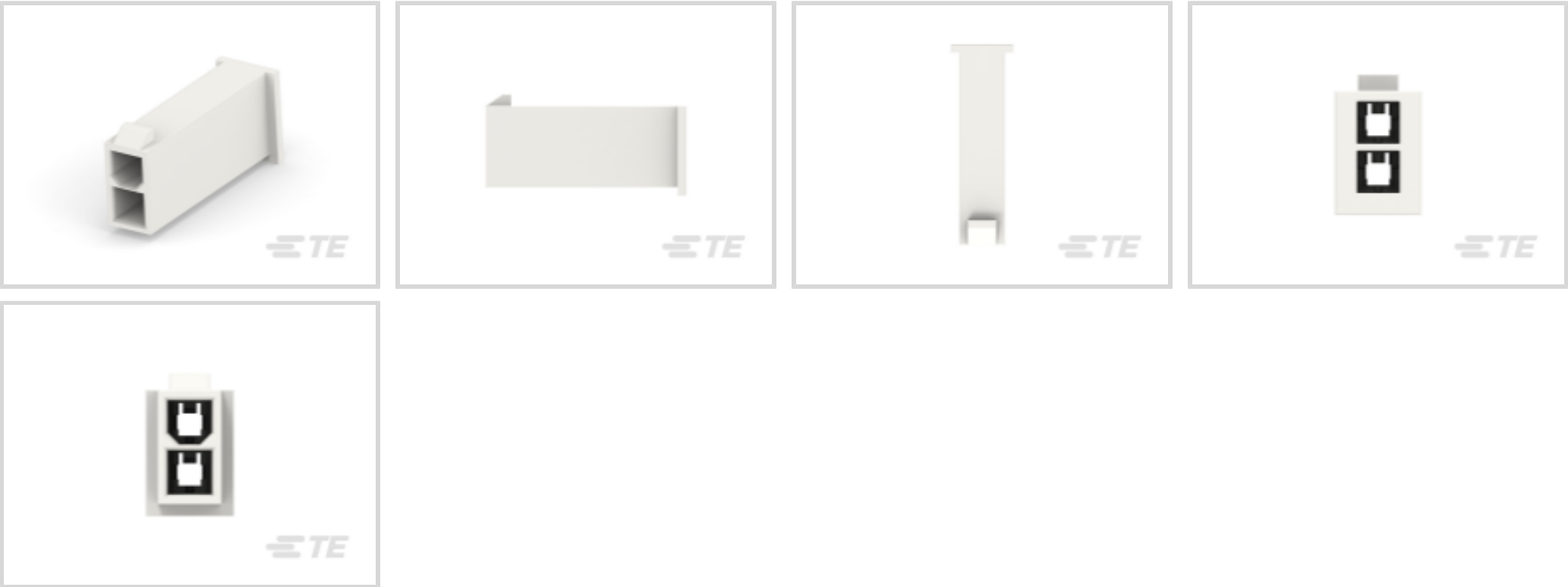




Connectors > Rectangular Connectors > Standard Rectangular Connectors



Connector Product Type: **Housing**  
Connector & Housing Type: **Plug**  
Termination Method to Wire & Cable: **Crimp**  
Connector System: **Wire-to-Wire**  
Contact Retention Within Housing: **Without**

Features

Product Type Features

Connector Product Type	Housing
Connector & Housing Type	Plug
Connector System	Wire-to-Wire
Sealable	No
Connector & Contact Terminates To	Wire & Cable

Configuration Features

Number of Positions	2
Number of Rows	2

Electrical Characteristics

Operating Voltage	600 VAC
-------------------	---------

Body Features

Primary Product Color	White
-----------------------	-------

Contact Features

--	--



Contact Type	Pin
Contact Retention Within Housing	Without

Termination Features

Termination Method to Wire & Cable	Crimp
------------------------------------	-------

Mechanical Attachment

Connector Mounting Type	Cable Mount (Free-Hanging)
-------------------------	----------------------------

Housing Features

Housing Material	Polyamide
Centerline (Pitch)	4.2 mm[.165 in]

Dimensions

Row-to-Row Spacing	4.2 mm[.165 in]
Connector Width	23.8 mm[.937 in]
Connector Height	9.6 mm[.378 in]
Connector Length	5.4 mm[.213 in]

Usage Conditions

Operating Temperature Range	-40 – 105 °C[-40 – 221 °F]
-----------------------------	----------------------------

Operation/Application

Circuit Application	Power & Signal
---------------------	----------------

Industry Standards

Compatible With Agency/Standards Products	CSA, UL
UL Rating	Recognized
Compatible With Approved Standards Products	UL E28476
CSA Rating	208567
Glow Wire Rating	GWT 750°C (Without Flame)
UL Flammability Rating	UL 94V-2

Packaging Features

Packaging Quantity	500
Packaging Method	Package

Product Compliance

For compliance documentation, visit the product page on TE.com>

EU RoHS Directive 2011/65/EU	Compliant
------------------------------	-----------



EU ELV Directive 2000/53/EC	Compliant
China RoHS 2 Directive MIIT Order No 32, 2016	No Restricted Materials Above Threshold
EU REACH Regulation (EC) No. 1907/2006	Current ECHA Candidate List: JAN 2025 (247) Candidate List Declared Against: JAN 2025 (247) Does not contain REACH SVHC
Halogen Content	Not Low Halogen - contains Br or Cl > 900 ppm.
Solder Process Capability	Not reviewed for solder process capability

Product Compliance Disclaimer

This information is provided based on reasonable inquiry of our suppliers and represents our current actual knowledge based on the information they provided. This information is subject to change. The part numbers that TE has identified as EU RoHS compliant have a maximum concentration of 0.1% by weight in homogenous materials for lead, hexavalent chromium, mercury, PBB, PBDE, DBP, BBP, DEHP, DIBP, and 0.01% for cadmium, or qualify for an exemption to these limits as defined in the Annexes of Directive 2011/65/EU (RoHS2). Finished electrical and electronic equipment products will be CE marked as required by Directive 2011/65/EU. Components may not be CE marked. Additionally, the part numbers that TE has identified as EU ELV compliant have a maximum concentration of 0.1% by weight in homogenous materials for lead, hexavalent chromium, and mercury, and 0.01% for cadmium, or qualify for an exemption to these limits as defined in the Annexes of Directive 2000/53/EC (ELV). Regarding the REACH Regulation, the information TE provides on SVHC in articles for this part number is based on the latest European Chemicals Agency (ECHA) 'Guidance on requirements for substances in articles' posted at this URL: <https://echa.europa.eu/guidance-documents/guidance-on-reach>

Compatible Parts



TE Part # 2029096-2  
2P PLUG VAL-U-LOK V2 FH BLUE

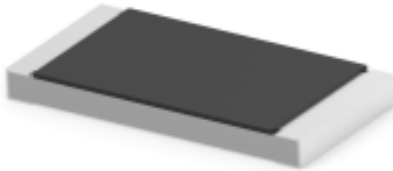


TE Part # 1969603-2  
2P RCPT VAL-U-LOK GW

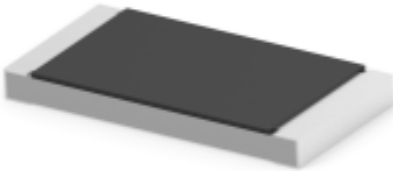


TE Part # 1586039-2  
2P VAL-U-LOK VRT HDR W/P V2

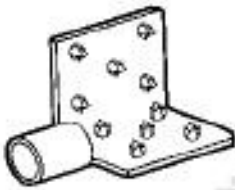
Customers Also Bought



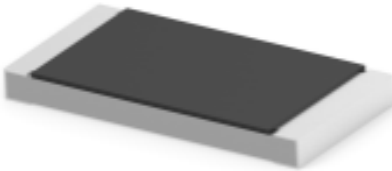
TE Part #1-2176602-5  
RLC73K 3A R845 1% 4K RL



TE Part #2176602-4  
RLC73K 3A R649 1% 4K RL



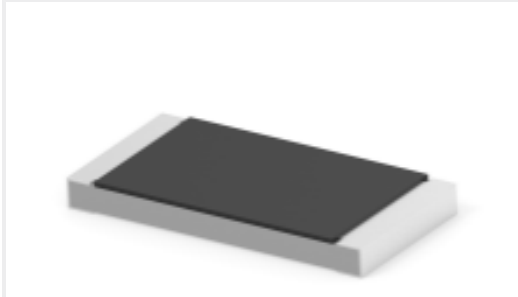
TE Part #329860-1  
TERMI-FOIL 16-14 DOUBLE FACE



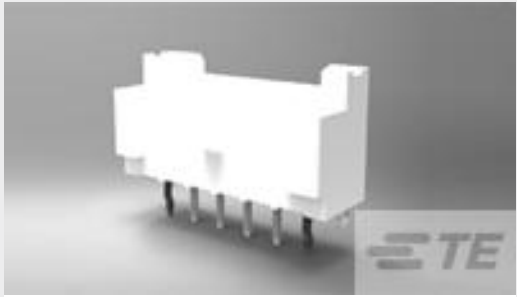
TE Part #2-2176602-0  
RLC73K 3A R953 1% 4K RL



TE Part #1744417-3  
3 POS EP 2.5 HSG, GLOW WIRE



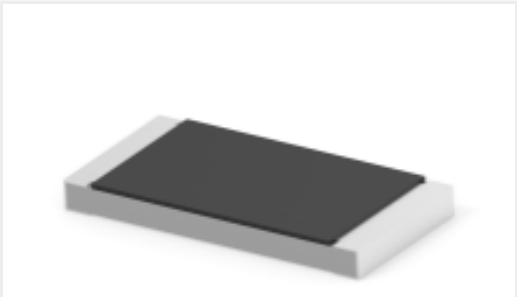
TE Part #2176602-8  
RLC73K 3A R715 1% 4K RL



TE Part #2132415-3  
EP2.5 Shrouded HDR ASSY 3P VERT w /o boss



TE Part #2110989-1  
EP 2.5 RCPT CONTACT, 26-22 AWG



TE Part #4-2176601-8  
RLC73K 3A R174 1% 4K RL



TE Part #5053142385  
RNF-100-3/8-BK-STK

Documents

Product Drawings

2P FH PLUG VAL-U-LOK FH GW

English

CAD Files

3D PDF

3D

Customer View Model

ENG\_CVM\_CVM\_1969604-2\_A\_c-1969604-2-a.2d\_dxf.zip

English

Customer View Model

ENG\_CVM\_CVM\_1969604-2\_A\_c-1969604-2-a.3d\_igs.zip

English

Customer View Model

ENG\_CVM\_CVM\_1969604-2\_A\_c-1969604-2-a.3d\_stp.zip

English

By downloading the CAD file I accept and agree to the [Terms and Conditions](#) of use.

Datasheets & Catalog Pages

1-1773730-3 VAL-U-LOK Connectors with TPA Flyer

English

Product Specifications

Engineering Report

English

Instruction Sheets

Instruction Sheet (U.S.)

1969604-2

Housing, Plug, Crimp, Wire-to-Wire, UL 94V-2, 2 Position, 4.2 mm [.165 in] Centerline, 2 Row, 600 VAC, Rectangular Wire & Cable Connectors & Housings



English