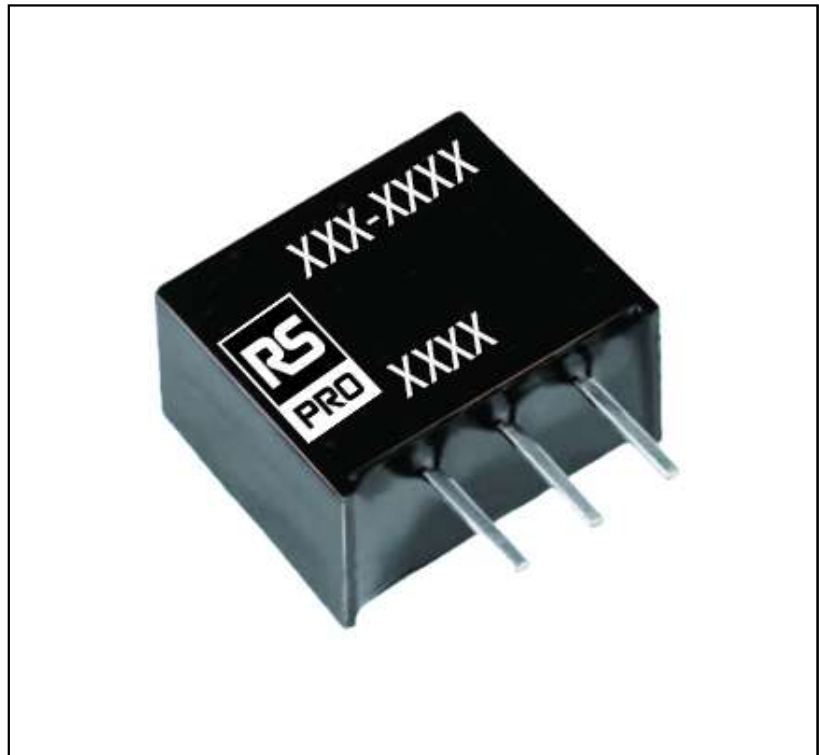


Features

- Small volume
- High efficiency
- High lifespan

RS PRO DC - DC Converter

RS Stock No.: 0633219 0633220 0633221 0633222
0633223



RS PRO is the own brand of RS. The RS PRO Seal of Approval is your assurance of professional quality, a guarantee that every part is rigorously tested, inspected, and audited against demanding standards. Making RS PRO the Smart Choice for our customers.

Product Description

- Wide input voltage range
- High efficiency, up to 92%
- Miniature SIP package
- Low ripple & noise
- Operating temperature -40° +85°

Electrical Specifications

RS Stock#	Input Voltage (Vdc)	Output Voltage (Vdc)	Output Current (mA)	Efficiency (Typ)
0633219	4.75-28	3.3	500	80%
0633220	6.5-32	5	500	84%
0633221	11-32	9	500	91%
0633222	15-32	12	500	92%
0633223	18-32	15	500	92%

General Specifications

Output Voltage	DC 1.5V;1.8V;2.5V;3.3V;5V;9V;12V;15V
Input Voltage Range	DC 4.75V-28V;6.5V-32V;11V-32V;15V-32V;18V-32V
Power Rating	See Electrical Specifications
Input Voltage Nominal	See Electrical Specifications
Output Current	500mA
Mounting Type	SIP
Isolated	Yes
Number of Outputs	1
Output Voltage Adjustment Range	nonsupport
Package	Plastic pipe installation
Isolation Voltage	Non isolated
Width	11.6mm
Depth	10.2mm
Length	7.5mm
Railway Approved	No
Load Regulation	±0.2% Typ
Medical Approved	No

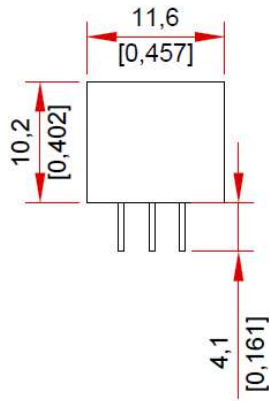
Operation Environment Specifications

Maximum Operating Temperature	85°C
Minimum Operating Temperature	-40°C

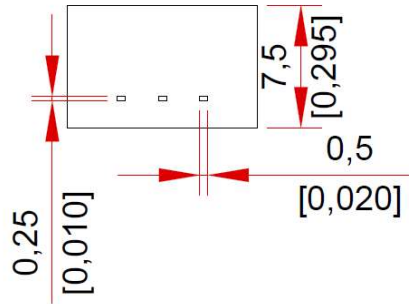
Approvals

Compliance/Certifications	CE
---------------------------	----

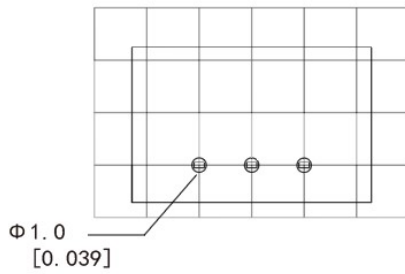
Interview Diagram



Bottom attempting



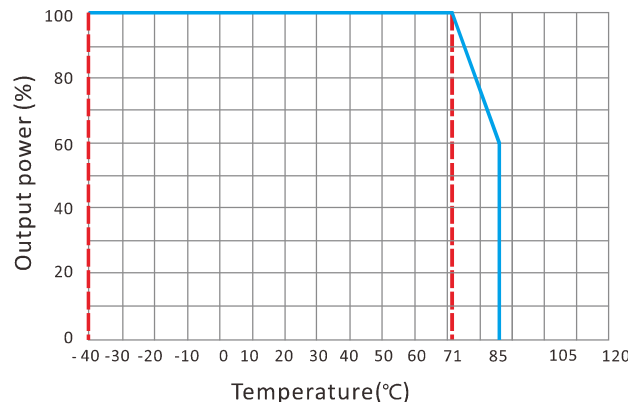
Recommended PCB size diagram



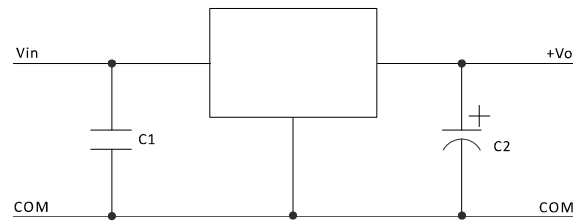
Pin definition

Pin	Single
1	+Vin
2	Gnd
3	+Vo

ELECTRICAL CURVE



RECOMMENDED TEST AND APPLICATION CIRCUIT



C1=Optional 1uF ceramic

C2=Required 100uF electrolytic