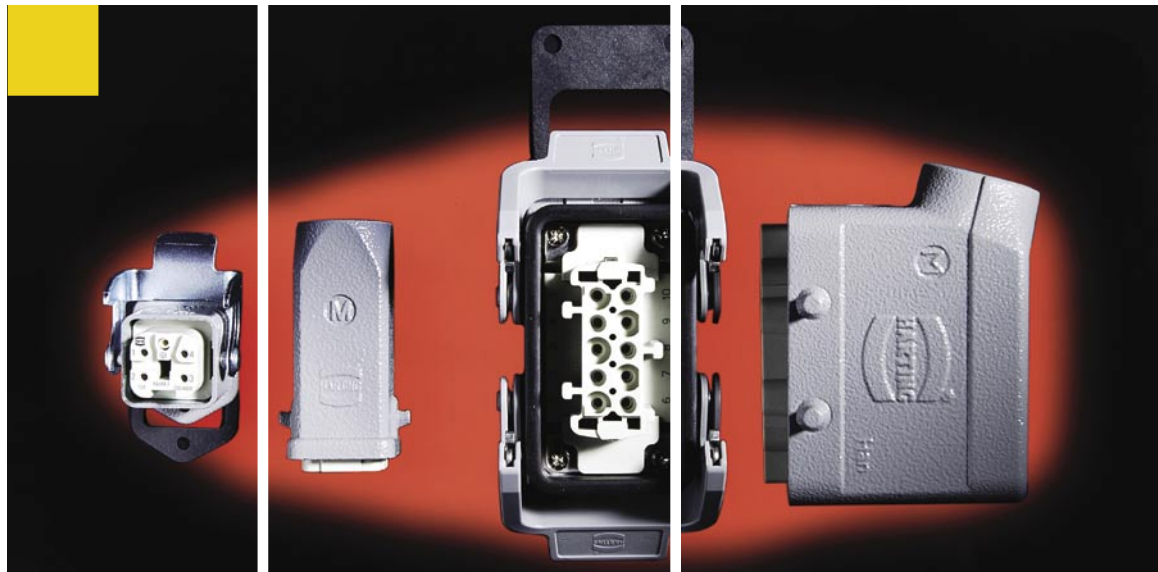


HARTING Electric



## Han-Kit® Complete Connector Sets

Industrial Connectors for Applications  
up to 500 V / 16 A



People | Power | Partnership

Economical and Reliable Connections - 1 Kit per Package - Easy Choice for You!

**Specifications**

VDE 0110 Table for clearance and creepage distances  
 DIN EN 61 984  
 VDE 0627 Connectors  
 Safety requirements and Tests

**Standards**

DIN EN 175 301-801

**Approvals**

UL, CSA, SEV for inserts



Certified accd. to EN ISO 9001 in design/ development, production, installation and service.

**General Remarks:**

It is the user's responsibility to check whether the componenets belonging to these kits comply with different regulations from those stated in special fields of application which we are unable to foresee.

We reserve the right to modify designs in order to improve quality and keep pace with technological requirements in production.

No part of this information leaflet must be reproduced in any form (print, photocopy, microfilm or any other process) processed, duplicated or distributed by means of electronic systems without the written permission of HARTING ELectric GmbH & Co. KG, Espelkamp (Copyright Law, Fair Trading Law, Civil Code).

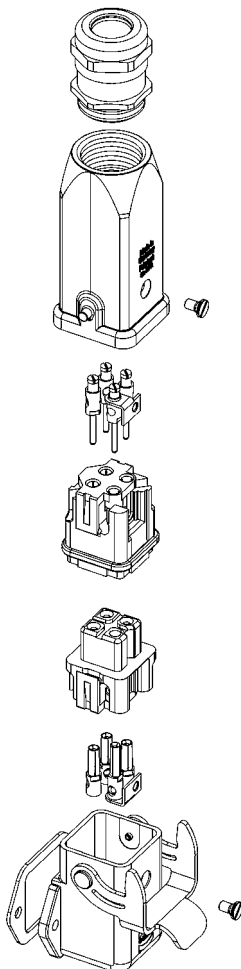
We are bound by the German version only.

**Note**

**Connectors should not be coupled or decoupled under electrical load.**

**Connectors of the same or different series being mounted side by side may be protected against incorrect mating by the use of coding options.**

**Han® 3 A**



**Connector Set Up**

Cable Gland

Hood

Male contacts

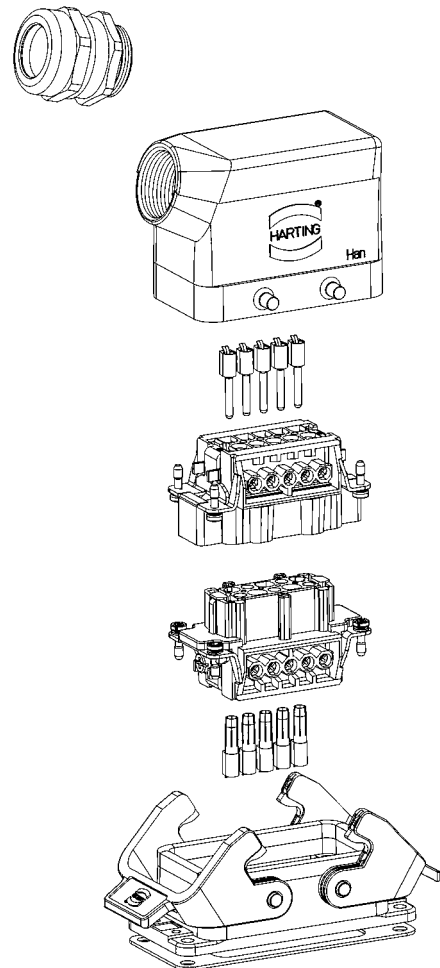
Male insert

Female insert

Female contacts

Bulkhead mounted housing

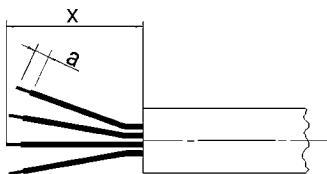
**Han® 10 B**



## Screw Terminal

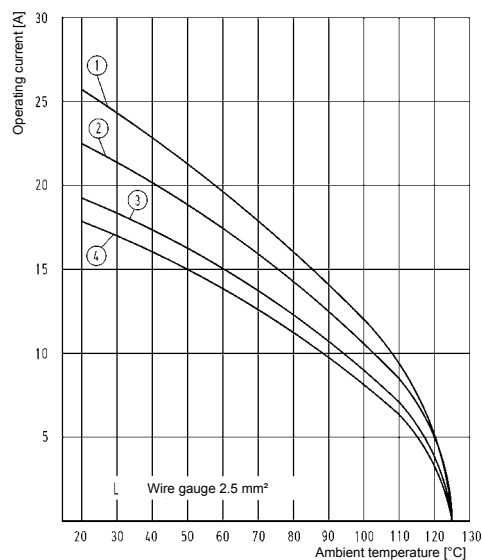
Inserts	Stripping length a (mm)	Sheath length x (mm)
Han 3A ... + 4A...	4.5	40
Han 10 A	7	85
Han 16 A	7	100
Han 6 E	7	70
Han 10 E	7	90
Han 16 E	7	110
Han 24 E	7	130

Recommended Tightening Torques and Screw Driver Blades				
Size of screw	Type of connector	Tightening torque [Nm]	Tightening torque [lbf·ft]	Recomm. screw driver blade [mm]
M3	Screw terminal Han 3A.../4A...	0.25	0.4	0.5 x 2.5
M3	Screw terminal Han 10A + 16A Han 6B - 24 B	0.5	0.4	0.5 x 3.5
M3.5	PE contact Han 10A + 16A	1.2	0.9	0.5 x 3.5
M4	PE contact Han 6B - 24 B	1.2	0.9	0.5 x 3.5

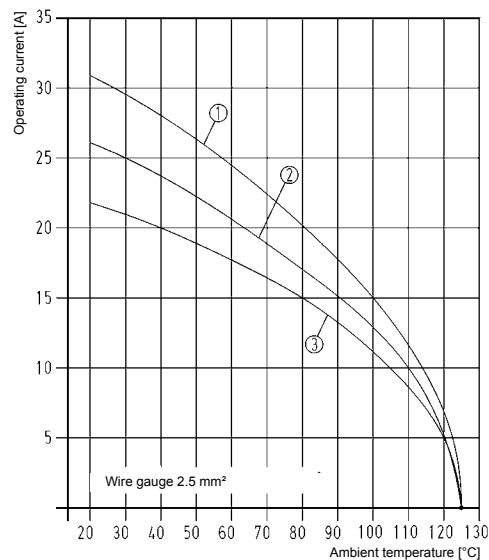


## Derating Diagrammes

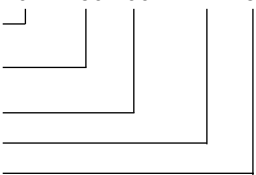
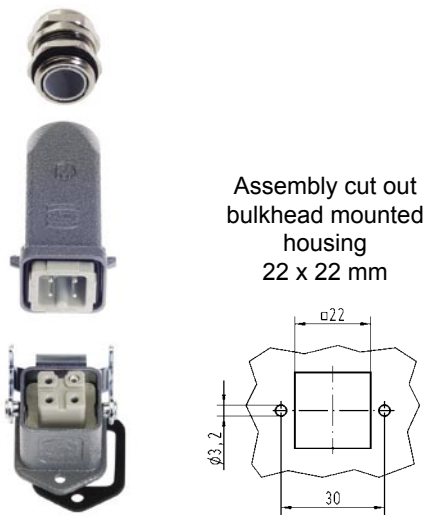
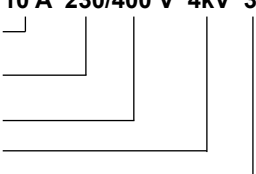
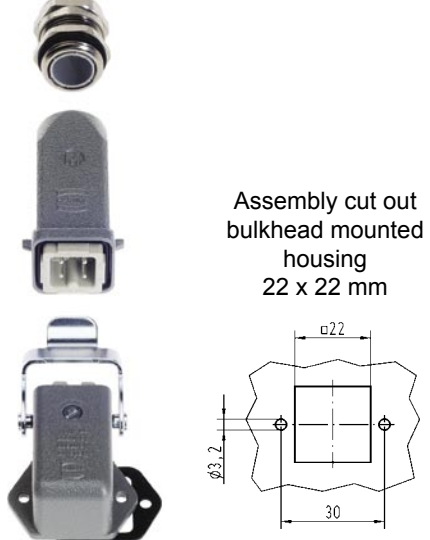
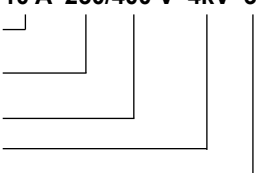
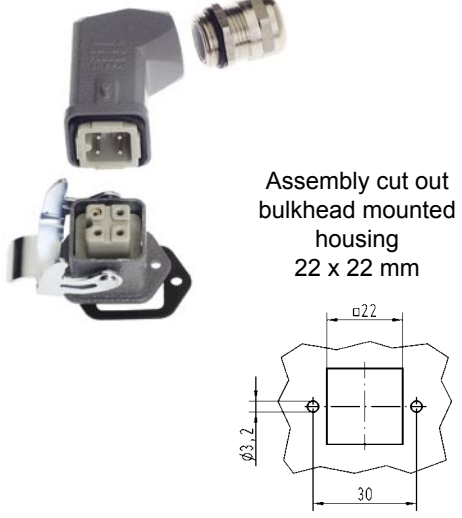
The current carrying capacity is limited by the thermal properties of materials which are used for inserts as well as by the insulation materials. The rated current is the continuous, not interrupted current a connector can take when simultaneous power on all contacts is given, without exceeding the maximum temperature according to DIN IEC 60 512-3.



- 1 = Han 6 E
- 2 = Han 10 E
- 3 = Han 16 E
- 4 = Han 24 E



- 1 = Han 3 A / 4 A
- 2 = Han 10 A
- 3 = Han 16 A

Han® 3 A Metal Version	Part-Number	Dimensions in mm
<p><b>Han-Kit®-3AGM</b></p> <p>Hood Han® 3 A straight Bulkhead mounted hous.<sup>1)</sup> Han® 3 A straight Material Die cast zinc alloy Protection degree<sup>2)</sup> IP 67 Cable gland M20, metal Cable diameter 5 - 9 mm / 6 - 12 mm Insert Han® 3 A, 3-pins + PE Screw terminal 1-2.5 mm<sup>2</sup>, AWG 18-14 Electrical data accd. to DIN EN 61 984<sup>3)</sup> <b>10 A 230/400 V 4kV 3</b></p>  <p>Rated current Rated voltage conductor-ground Rated voltage conductor-conductor Rated impulse voltage Pollution degree Rated voltage accd. to UL/CSA 600 V</p>	<p>10 20 003 0001</p>	 <p>Assembly cut out bulkhead mounted housing 22 x 22 mm</p>
<p><b>Han-Kit®-3AWM</b></p> <p>Hood Han® 3 A straight Bulkhead mounted hous.<sup>1)</sup> Han® 3 A angled Material Die cast zinc alloy Protection degree<sup>2)</sup> IP 67 Cable gland M20, metal Cable diameter 5 - 9 mm / 6 - 12 mm Insert Han® 3 A, 3-pins + PE Screw terminal 1-2.5 mm<sup>2</sup>, AWG 18-14 Electrical data accd. to DIN EN 61 984<sup>3)</sup> <b>10 A 230/400 V 4kV 3</b></p>  <p>Rated current Rated voltage conductor-ground Rated voltage conductor-conductor Rated impulse voltage Pollution degree Rated voltage accd. to UL/CSA 600 V</p>	<p>10 20 003 0003</p>	 <p>Assembly cut out bulkhead mounted housing 22 x 22 mm</p>
<p><b>Han-Kit®-3AWSM</b></p> <p>Hood Han® 3 A angled Bulkhead mounted hous.<sup>1)</sup> Han® 3 A straight Material Die cast zinc alloy Protection degree<sup>2)</sup> IP 67 Cable gland M20, metal Cable diameter 5 - 9 mm / 6 - 12 mm Insert Han® 3 A, 3-pins + PE Screw terminal 1-2.5 mm<sup>2</sup>, AWG 18-14 Electrical data accd. to DIN EN 61 984<sup>3)</sup> <b>10 A 230/400 V 4kV 3</b></p>  <p>Rated current Rated voltage conductor-ground Rated voltage conductor-conductor Rated impulse voltage Pollution degree Rated voltage accd. to UL/CSA 600 V</p>	<p>10 20 003 0005</p> <p>1) Bulkhead mounted housing with flange gasket 2) Protection degree acc. to DIN EN 60 529 in locked position 3) For only use in grounded circuits</p>	 <p>Assembly cut out bulkhead mounted housing 22 x 22 mm</p>

**Han® 3 A** Plastic Version

Part-Number

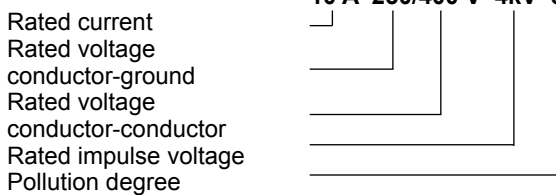
Dimensions in mm

**Han-Kit®-3AGK**

Hood Han® 3 A straight  
 Bulkhead mounted hous.<sup>1)</sup> Han® 3 A straight  
 Material Plastic  
 Protection degree<sup>2)</sup> IP 67  
 Cable gland M20, plastic  
 Cable diameter 5 - 9 mm / 6 - 12 mm  
 Insert Han® 3 A, 3-pins + PE  
 Screw terminal 1-2.5 mm<sup>2</sup>, AWG 18-14

10 20 003 0002

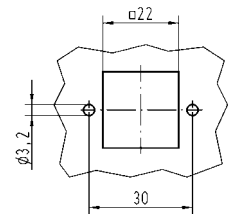
Electrical data accd. to DIN EN 61 984<sup>3)</sup>  
**10 A 230/400 V 4kV 3**



Rated voltage accd. to UL/CSA 600 V



Assembly cut out bulkhead mounted housing 22 x 22 mm

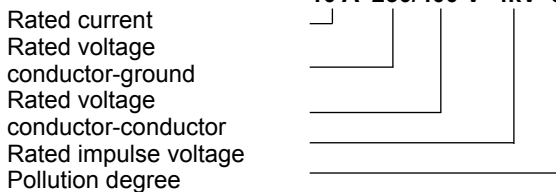


**Han-Kit®-3AWK**

Hood Han® 3 A straight  
 Bulkhead mounted hous.<sup>1)</sup> Han® 3 A angled  
 Material Plastic  
 Protection degree<sup>2)</sup> IP 67  
 Cable gland M20, plastic  
 Cable diameter 5 - 9 mm / 6 - 12 mm  
 Insert Han® 3 A, 3-pins + PE  
 Screw terminal 1-2.5 mm<sup>2</sup>, AWG 18-14

10 20 003 0004

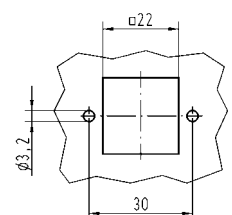
Electrical data accd. to DIN EN 61 984<sup>3)</sup>  
**10 A 230/400 V 4kV 3**



Rated voltage accd. to UL/CSA 600 V



Assembly cut out bulkhead mounted housing 22 x 22 mm



- 1) Bulkhead mounted housing with flange gasket
- 2) Protection degree acc. to DIN EN 60 529 in locked position
- 3) For only use in grounded circuits

**Han® 4 A** Metal Version

Part-Number

Dimensions in mm

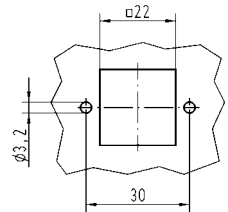
**Han-Kit®-4AGM**

Hood Han® 3 A straight  
 Bulkhead mounted hous.<sup>1)</sup> Han® 3 A straight  
 Material Die cast zinc alloy  
 Protection degree<sup>2)</sup> IP 67  
 Cable gland M20, metal  
 Cable diameter 5 - 9 mm / 6 - 12 mm  
 Insert Han® 4 A, 4-pins + PE  
 Screw terminal 1-2.5 mm<sup>2</sup>, AWG 18-14  
 Electrical data accd. to DIN EN 61 984<sup>3)</sup>  
**10 A 230/400 V 4kV 3**  
 Rated current  
 Rated voltage conductor-ground  
 Rated voltage conductor-conductor  
 Rated impulse voltage  
 Pollution degree  
 Rated voltage accd. to UL/CSA 600 V

10 20 004 0001



Assembly cut out bulkhead mounted housing 22 x 22 mm



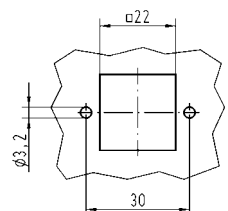
**Han-Kit®-4AWM**

Hood Han® 3 A straight  
 Bulkhead mounted hous.<sup>1)</sup> Han® 3 A angled  
 Material Die cast zinc alloy  
 Protection degree<sup>2)</sup> IP 67  
 Cable gland M20, metal  
 Cable diameter 5 - 9 mm / 6 - 12 mm  
 Insert Han® 4 A, 4-pins + PE  
 Screw terminal 1-2.5 mm<sup>2</sup>, AWG 18-14  
 Electrical data accd. to DIN EN 61 984<sup>3)</sup>  
**10 A 230/400 V 4kV 3**  
 Rated current  
 Rated voltage conductor-ground  
 Rated voltage conductor-conductor  
 Rated impulse voltage  
 Pollution degree  
 Rated voltage accd. to UL/CSA 600 V

10 20 004 0003



Assembly cut out bulkhead mounted housing 22 x 22 mm



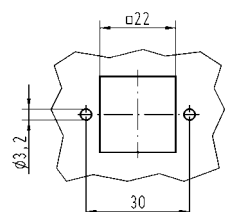
**Han-Kit®-4AWSM**

Hood Han® 3 A angled  
 Bulkhead mounted hous.<sup>1)</sup> Han® 3 A straight  
 Material Die cast zinc alloy  
 Protection degree<sup>2)</sup> IP 67  
 Cable gland M20, metal  
 Cable diameter 5 - 9 mm / 6 - 12 mm  
 Insert Han® 4 A, 4-pins + PE  
 Screw terminal 1-2.5 mm<sup>2</sup>, AWG 18-14  
 Electrical data accd. to DIN EN 61 984<sup>3)</sup>  
**10 A 230/400 V 4kV 3**  
 Rated current  
 Rated voltage conductor-ground  
 Rated voltage conductor-conductor  
 Rated impulse voltage  
 Pollution degree  
 Rated voltage accd. to UL/CSA 600 V

10 20 004 0005



Assembly cut out bulkhead mounted housing 22 x 22 mm



- 1) Bulkhead mounted housing with flange gasket
- 2) Protection degree acc. to DIN EN 60 529 in locked position
- 3) For only use in grounded circuits

**Han® 4 A** Plastic Version

Part-Number

Dimensions in mm

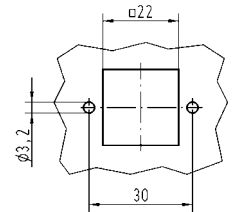
**Han-Kit®-4AGK**

Hood	Han® 3 A straight
Bulkhead mounted hous. <sup>1)</sup>	Han® 3 A straight
Material	Plastic
Protection degree <sup>2)</sup>	IP 67
Cable gland	M20, plastic
Cable diameter	5 - 9 mm / 6 - 12 mm
Insert	Han® 4 A, 4-pins + PE
Screw terminal	1-2.5 mm <sup>2</sup> , AWG 18-14
Electrical data accd. to DIN EN 61 984 <sup>3)</sup>	<b>10 A 230/400 V 4kV 3</b>
Rated current	
Rated voltage conductor-ground	
Rated voltage conductor-conductor	
Rated impulse voltage	
Pollution degree	
Rated voltage accd. to UL/CSA	600 V

10 20 004 0002



Assembly cut out bulkhead mounted housing 22 x 22 mm



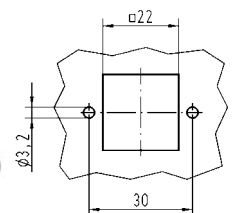
**Han-Kit®-4AWK**

Hood	Han® 3 A straight
Bulkhead mounted hous. <sup>1)</sup>	Han® 3 A angled
Material	Plastic
Protection degree <sup>2)</sup>	IP 67
Cable gland	M20, plastic
Cable diameter	5 - 9 mm / 6 - 12 mm
Insert	Han® 4 A, 4-pins + PE
Screw terminal	1-2.5 mm <sup>2</sup> , AWG 18-14
Electrical data accd. to DIN EN 61 984 <sup>3)</sup>	<b>10 A 230/400 V 4kV 3</b>
Rated current	
Rated voltage conductor-ground	
Rated voltage conductor-conductor	
Rated impulse voltage	
Pollution degree	
Rated voltage accd. to UL/CSA	600 V

10 20 004 0004



Assembly cut out bulkhead mounted housing 22 x 22 mm



- 1) Bulkhead mounted housing with flange gasket
- 2) Protection degree acc. to DIN EN 60 529 in locked position
- 3) For only use in grounded circuits

Han® 10 A

Part-Number

Dimensions in mm

**Han-Kit®-10A**

Hood<sup>1)</sup> Han® 10 A  
 Material Die cast aluminium alloy  
 Protection degree<sup>2)</sup> IP 65  
 Cable gland M20, metal  
 Cable diameter 5 - 9 mm / 6 - 12 mm

Insert Han® 10 A, 10-pins + PE  
 Screw terminal 1-2.5 mm<sup>2</sup>, AWG 18-14

Electrical data accd. to DIN EN 61 984<sup>3)</sup>  
**16 A 250 V 4kV 3**

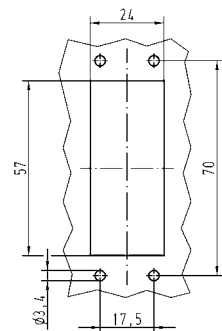
Rated current  
 Rated voltage<sup>3)</sup>  
 Rated impulse voltage  
 Pollution degree

Rated voltage  
 accd. to UL/CSA 600 V

10 20 010 0000



Assembly cut out  
 bulkhead mounted  
 housing  
 57 x 24 mm



Han® 16 A

Part-Number

Dimensions in mm

**Han-Kit®-16A**

Hood<sup>1)</sup> Han® 16 A  
 Material Die cast aluminium alloy  
 Protection degree<sup>2)</sup> IP 65  
 Cable gland M20, metal  
 Cable diameter 5 - 9 mm / 6 - 12 mm

Insert Han® 16 A, 16-pins + PE  
 Screw terminal 1-2.5 mm<sup>2</sup>, AWG 18-14

Electrical data accd. to DIN EN 61 984<sup>3)</sup>  
**16 A 250 V 4kV 3**

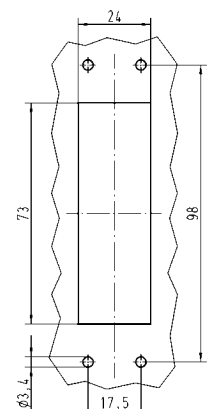
Rated current  
 Rated voltage<sup>3)</sup>  
 Rated impulse voltage  
 Pollution degree

Rated voltage  
 accd. to UL/CSA 600 V

10 20 016 0000



Assembly cut out  
 bulkhead mounted  
 housing  
 73 x 24 mm



1) Bulkhead mounted housing with flange gasket  
 2) Protection degree acc. to DIN EN 60 529 in locked position  
 3) For use in a un-grounded circuit or a grounded delta circuit



## Han® 6 B

Part-Number

Dimensions in mm

### Han-Kit®-6B

Hood<sup>1)</sup> Han® 6 B  
 Material Die cast aluminium alloy  
 Protection degree<sup>2)</sup> IP 65  
 Cable gland M20, metal  
 Cable diameter 5 - 9 mm / 6 - 12 mm

Insert Han® 6 E, 6-pins + PE  
 Screw terminal 1-2.5 mm<sup>2</sup>, AWG 18-14

Electrical data accd. to DIN EN 61 984<sup>3)</sup>

**16 A 500 V 6kV 3**

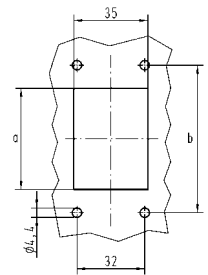
Rated current  
 Rated voltage<sup>3)</sup>  
 Rated impulse voltage  
 Pollution degree

Rated voltage  
 accd. to UL/CSA 600 V

10 33 006 0000



Dimensions in mm	Han-Kit 6 B
a	48
b	70
Assembly cut out bulkhead mounted housing	48x35



## Han® 10 B

Part-Number

Dimensions in mm

### Han-Kit®-10B

Hood<sup>1)</sup> Han® 10 B  
 Material Die cast aluminium alloy  
 Protection degree<sup>2)</sup> IP 65  
 Cable gland M25, metal  
 Cable diameter 9 - 16 mm / 13 - 18 mm

Insert Han® 10 E, 10-pins + PE  
 Screw terminal 1-2.5 mm<sup>2</sup>, AWG 18-14

Electrical data accd. to DIN EN 61 984<sup>3)</sup>

**16 A 500 V 6kV 3**

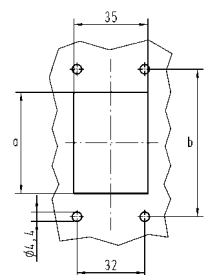
Rated current  
 Rated voltage<sup>3)</sup>  
 Rated impulse voltage  
 Pollution degree

Rated voltage  
 accd. to UL/CSA 600 V

10 33 010 0000



Dimensions in mm	Han-Kit 10 B
a	60
b	83
Assembly cut out bulkhead mounted housing	60 x 35



1) Bulkhead mounted housing with flange gasket  
 2) Protection degree acc. to DIN EN 60 529 in locked position  
 3) For use in a un-grounded circuit or a grounded delta circuit

**Han® 16 B**

Part-Number

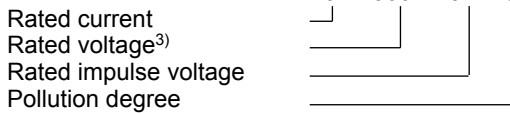
Dimensions in mm

**Han-Kit®-16B**

Hood<sup>1)</sup> Han® 16 B  
 Material Die cast aluminium alloy  
 Protection degree<sup>2)</sup> IP 65  
 Cable gland M32, metal  
 Cable diameter 13-20 mm / 18-25 mm

Insert Han® 16 E, 16-pins + PE  
 Screw terminal 1-2.5 mm<sup>2</sup>, AWG 18-14

Electrical data accd. to DIN EN 61 984<sup>3)</sup>  
**16 A 500 V 6kV 3**

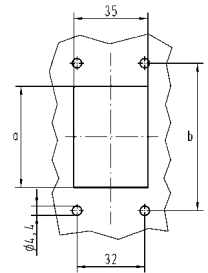


Rated voltage accd. to UL/CSA 600 V

10 33 016 0000



Dimensions in mm	Han-Kit 16 B
a	82
b	103
Assembly cut out bulkhead mounted housing	82 x 35



**Han® 24 B**

Part-Number

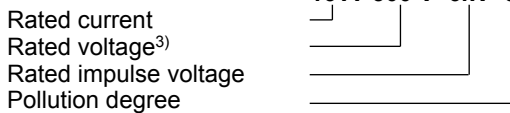
Dimensions in mm

**Han-Kit®-24B**

Hood<sup>1)</sup> Han® 24 B  
 Material Die cast aluminium alloy  
 Protection degree<sup>2)</sup> IP 65  
 Cable gland M32, metal  
 Cable diameter 13-20 mm / 18-25 mm

Insert Han® 24 E, 24-pins + PE  
 Screw terminal 1-2.5 mm<sup>2</sup>, AWG 18-14

Electrical data accd. to DIN EN 61 984<sup>3)</sup>  
**16 A 500 V 6kV 3**

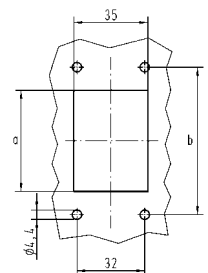


Rated voltage accd. to UL/CSA 600 V

10 33 024 0000

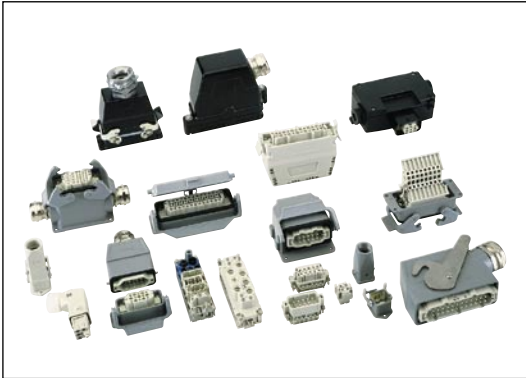


Dimensions in mm	Han-Kit 24 B
a	108
b	130
Assembly cut out bulkhead mounted housing	108x35



1) Bulkhead mounted housing with flange gasket  
 2) Protection degree acc. to DIN EN 60 529 in locked position  
 3) For use in a un-grounded circuit or a grounded delta circuit

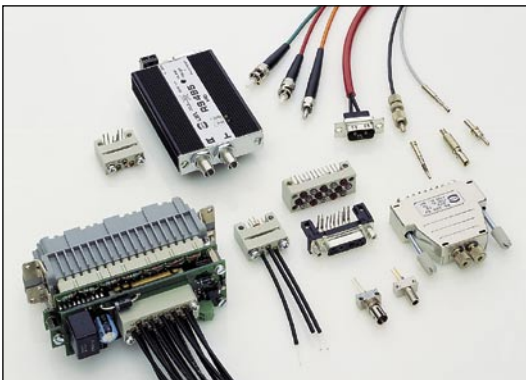
Product Range



Industrial Connectors Han®



Feldbus components  
Sensor/Actuator components  
Han-InduNet® system cables



Fiber optic data link systems  
and components



Network components  
for industrial communication