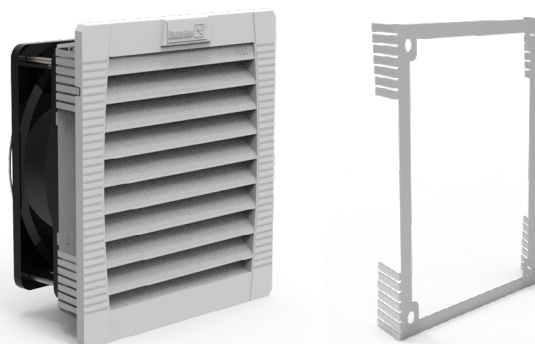


PF 11.000 MEK | PF 22.000 MEK | Mounting Extension Kit FILTERFAN | EXHAUST FILTER 19–70 m³/h

- filterfan and exhaust filter for wall thicknesses from 3 to 5 mm
- standard filterfans can be upgraded with the MEK for use in 3 to 5 mm thick housing walls
- can be used in plastic cabinets, for example
- system of protection IP 54, NEMA type 12



PRODUCT	PF 11.000 with MEK	PF 22.000 with MEK	
ARTICLE NO.	11611101215	11622101215	Unit
DATA			
Rated voltage ±10 %	230 AC 50 60 Hz		V
Unimpeded airflow	19 24	61 70	m ³ /h
Airflow comb. with exhaust filter	12 14	44 50	
Power consumption	12 11	20 20	W
Current consumption	0.07 0.06	0.15 0.15	A
Noise level according to EN ISO 3741	33 33	44 44	dB (A)
Weight	0.55	0.7	kg
Type of connection Fuse	cable, 2-core, length 310 mm 6	terminal strip 6	A
System of protection	NEMA type 12 according to EN 60529 / UL 50		
System of protection	IP 54; IP 55 on request for PF/ PFA 22.000		
Filtration efficiency	88		%
Filter mat quality class	G 4 according to EN 779		
Duty cycle bearing type	100 sleeve bearing		%
Service life L ₁₀ (+ 40 °C) ¹	52500	37500	h
Temperature range	-40 ... +55 -40 ... +131		°C °F
Design	made of injection-moulded thermoplastic, self-extinguishing, UL 94 V0; stainless steel		
Colour	RAL 7035		

PRODUCT	MEK for PF 11.000 or PFA	MEK for PF 22.000 or PFA	
ARTICLE NO.	18112000006	18112000007	Unit
Dimensions (H x W x D)	98 x 90 x 15	132 x 120 x 24	mm
Weight	12	20	g
Material	stainless steel		
Kit consists of	Extension sheet and 4 screws		

ACCESSORIES	ARTICLE NUMBER	
Exhaust filter	PFA 10000 MEK: 11710001215	PFA 20000 MEK: 11720001215
Spare filter mats	5 pieces 18611600029	18611600030
Thermostat	17121000000	
Hygrostat	17207000000	
Rainhood in stainless steel	18102000014	

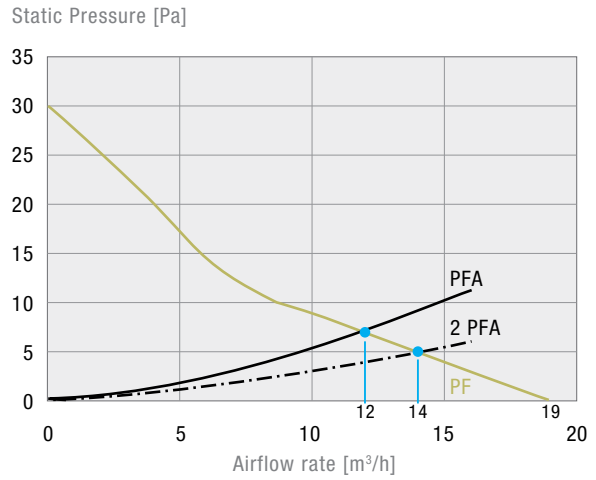
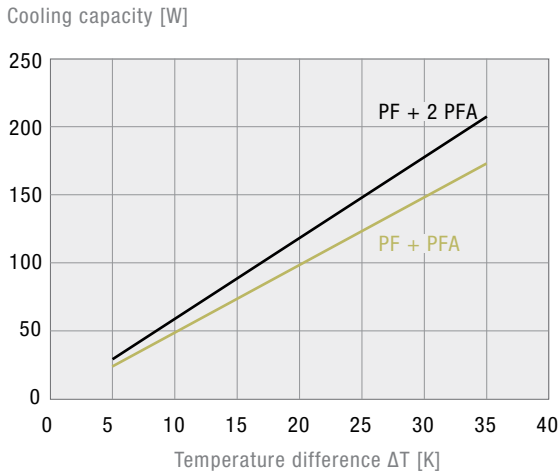
For additional models, options and voltages visit www.pfannenberg.com or contact us directly.

¹ fan failure is defined as being when the current and speed deviate or the operating noises are out of the ordinary

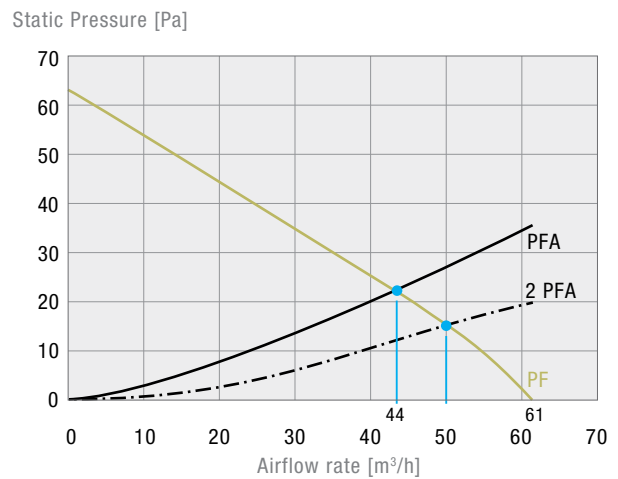
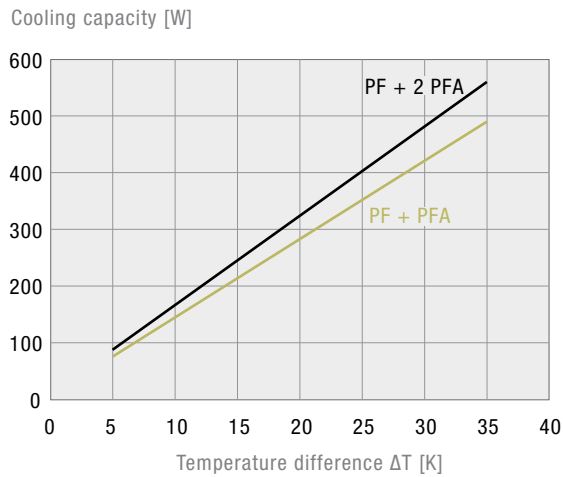
Cooling capacity performance curves

Static pressure performance curve

PF 11.000 MEK



PF 22.000 MEK



Dimensions

mm	PF 11.000 MEK		PF 22.000 MEK	
	PF	PFA	PF	PFA
X	109	109	145	145
Y	109	109	145	145
Z1	4	4	5	5
Z2	62	19	70	26
A¹	93	93	126.5	126.5
B¹	93	93	126.5	126.5

