

Distribution Unit with 1 IEC Appliance Inlet C14 or Power Cord, 5 or 6 IEC Appliance Outlets F and Extra Components



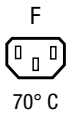
4740.6X00



4740.3X00



Stripbloc 4740 with cable



**Description**

- Stand alone module
- 2 - 5 Functions:  
Appliance Inlet Protection class I, Connector shuttered
- Line Switch
- Fuseholder with neon indicator
- Version with line filter 6A

**Weblinks**

[pdf-datasheet](#), [html-datasheet](#), [General Product Information](#), [Approvals](#), [CE declaration of conformity](#), [RoHS](#), [CHINA-RoHS](#), [REACH](#), [Mating Connectors](#), [e-Shop](#), [SCHURTER-Stock-Check](#), [Distributor-Stock-Check](#), [CAD-Drawings](#), [Accessories](#), [Detailed request for product](#)

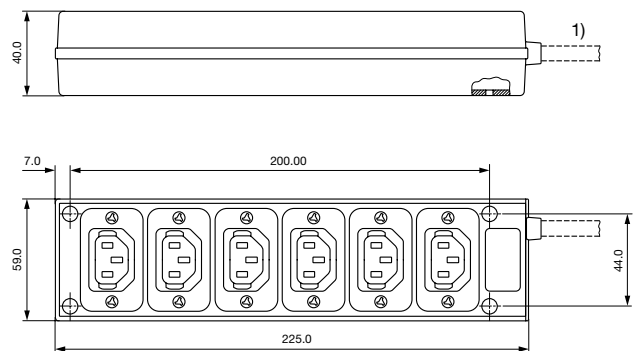
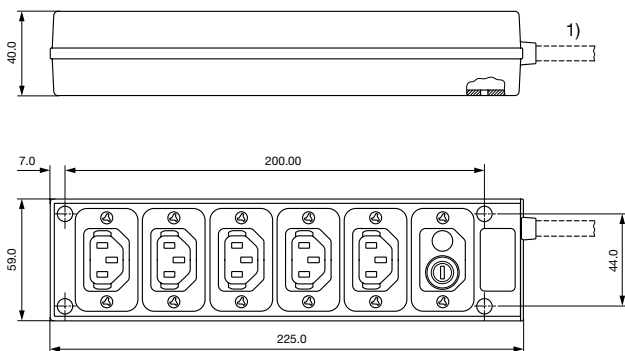
**Technical Data**

|                           |   |                                    |  |
|---------------------------|---|------------------------------------|--|
| Ratings IEC               | 10A / 250VAC; 50Hz  | Appliance Inlet / Appliance Outlet | C14 acc. to IEC 60320, / F acc. to IEC 60320, UL 498 CSA C22.2 no. 42 (for cold conditions) pin-temperature 70 °C, 10A, Protection Class I |
| Ratings UL/CSA            | 15A / 250VAC; 60Hz  | Fuseholder                         | 1-pole, acc. to IEC 60127-6, for fuse-links 5 x 20mm   |
| Dielectric Strength       | > 2.5kVAC between L-N<br>> 2.5kVAC between L/N-PE<br>(1 min/50Hz) | Power Acceptance @ Ta > 23°C       | Admissible power acceptance at higher ambient temperature see derating curves  |
| Allowable Operation Temp. | -25 °C to 70 °C   | Line Switch                        | Rocker switch, illuminated, acc. to IEC 61058-1<br><a href="#">Technical Details</a>   |
| Protection Class          | Suitable for appliances with protection class I acc. to IEC 61140 | MTBF                               | > 200'000h acc. to MIL-HB-217 F  |
| Material: Housing         | Thermoplastic, black, UL 94V-0                                    |                                    |  |

**Dimensions**

Stripbloc 4740.3X00

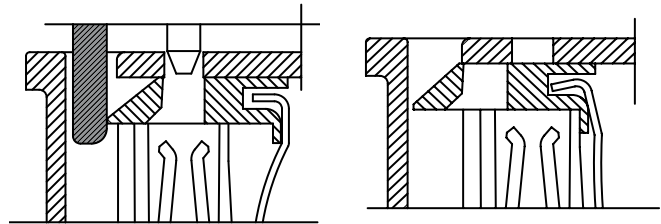
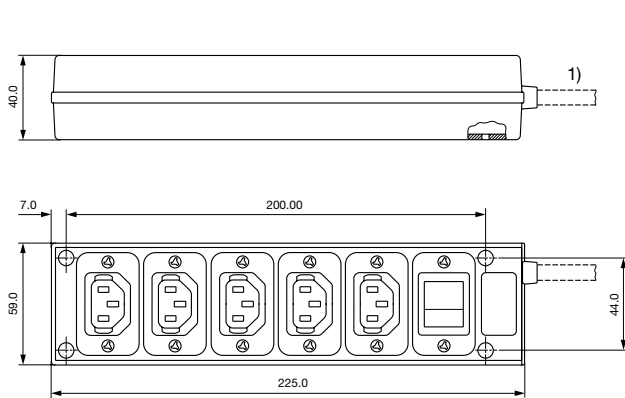
Stripbloc 4740.4X00



1) Version with plug and cable, see variants  
Mounting holes for 3 mm screws

1) Version with plug and cable, see variants  
Mounting holes for 3 mm screws

Stripbloc 4740.6X00



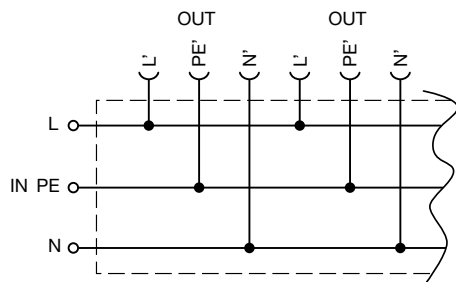
Shutter operation:  
shutters opened by plug insertion

Shutter operation:  
shutters closed when plug is removed

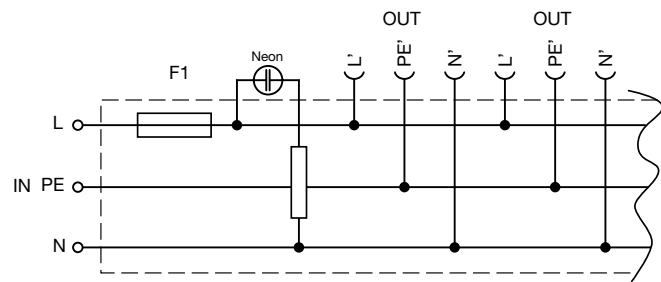
1) Version with plug and cable, see variants  
Mounting holes for 3 mm screws

Diagrams

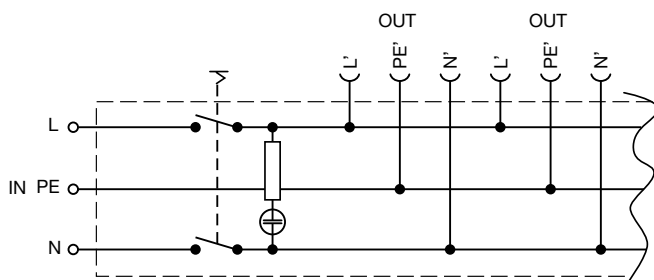
Distribution unit with 6 outlets



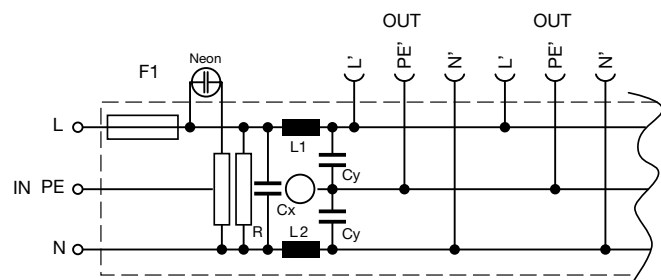
Distribution unit with 5 outlets, fuseholder and neon indication



Distribution unit with 5 outlets and rocker switch illuminated



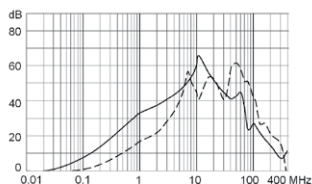
Distribution unit with 5 outlets, fuseholder, neon indication and filter



Attenuation loss

Standard version

----- differential mode    \_\_\_\_\_ common mode



### All Variants

| Connector | Fuseholder | Line Switch | Neon indication | Terminal                                  | cable     | Order Number |
|-----------|------------|-------------|-----------------|---|-----------|--------------|
| 6         | -          | -           | -               | -   | inlet     | 4740.4000    |
| 6         | -          | -           | -               | Continental Europe CEE7/VII (Schuko), 10A | 2 m cable | 4740.4600    |
| 6         | -          | -           | -               | United Kingdom BS 1363 A, 10A             | 2 m cable | 4740.4300    |
| 5         | -          | 2-pole      | -               | -   | inlet     | 4740.6000    |
| 5         | -          | 2-pole      | -               | Continental Europe CEE7/VII (Schuko), 10A | 2 m cable | 4740.6600    |
| 5         | -          | 2-pole      | -               | United Kingdom BS 1363 A, 10A             | 2 m cable | 4740.6300    |
| 5         | 1-pole     | -           | ●               | -   | inlet     | 4740.3000    |
| 5         | 1-pole     | -           | ●               | Continental Europe CEE7/VII (Schuko), 10A | 2 m cable | 4740.3600    |
| 5         | 1-pole     | -           | ●               | IEC/EN 60320-2-2/E, 10A                   | 2 m cable | 4740.3800    |
| 5         | 1-pole     | -           | ●               | United Kingdom BS 1363 A, 10A             | 2 m cable | 4740.3300    |
| 5         | 1-pole     | -           | ●               | with line filter 6 A                      | inlet     | 4740.3100    |

Most Popular.

Availability for all products can be searched real-time:<http://www.schurter.com/en/Stock-Check/Stock-Check-SCHURTER>

- 4740.3100 is with line filter 6A
- Recommended fuse: SP 5 x 20; 10 A / 250VAC, quick acting F, part No. 0001.1014
- Recommended Fuse for filter type: SP 5 x 20; 6.3 A / 250VAC, quick acting F, part No. 0001.1012
- Main plug cable acc. country specific standards

**Packaging unit** 10 Pcs

### Mating Inlets/Plugs

Category / Description

[Plug Overview complete](#)



|   |      |
|---|------|
| IEC Plug E, Cord Connector (Rewireable), Straight, max. cable Diameter 8.5 mm | 4732 |
| IEC Plug E, Cord Connector (Rewireable), Straight, max. Cable Diameter 10 mm  | 4735 |
| IEC Plug E, Cord Connector (Rewireable), Straight                             | 9009 |
| IEC Plug E, Cord Connector (Rewireable), Angled, max. Cable Diameter 8.5 mm   | 4733 |
| IEC Plug E, Cord Connector (Rewireable), Angled, max. Cable Diameter 10 mm    | 4736 |
| <a href="#">Plug further types to 4740</a>                                    | ...  |

### Mating Outlets/Connectors

[Appliance Outlet Overview complete](#)



|   |      |
|---|------|
| IEC Appliance Outlet F, Screw-on Mounting, Front Side, Solder Terminal                            | 4787 |
| IEC Appliance Outlet F, Snap-in Mounting, Front Side, Solder or Quick-connect Terminal            | 4788 |
| IEC Appliance Outlet F or H, Screw-on Mounting, Front Side, Solder, PCB or Quick-connect Terminal | 5091 |

[Appliance Outlet further types to 4740](#)

[Connector Overview complete](#)



|   |         |
|---|---------|
| IEC Connector C13, Rewireable, Straight | 4782    |
| IEC Connector C13, Rewireable, Straight | 4022    |
| IEC Connector C13, Rewireable, Angled   | 4785    |
| IEC Connector C13, Rewireable, Angled   | 4300-06 |
| IEC Connector C13, Rewireable, Angled   | 4012    |

[Connector further types to 4740](#)



[Interconnection Cord Overview complete](#)

|  |           |
|--|-----------|
| Interconnection Cord C13, 10 A                             | 6007.0212 |
| Interconnection Cord C13, 10 A                             | 6007.0214 |
| <a href="#">Interconnection Cord further types to 4740</a> |           |



[Power Cord Overview complete](#)

|   |           |
|---|-----------|
| Power Supply Cord with IEC plug C14, stripped end | 6007.0204 |
| <a href="#">Power Cord further types to 4740</a>  |           |



[Power Supply Cord Overview complete](#)

|   |           |
|---|-----------|
| EU Power Supply Cord with IEC Connector C13, straight           | 6004.0215 |
| EU Power Supply Cord with IEC Connector C13, straight           | 6003.0215 |
| Power Supply Cord with IEC Connector C13 angled, stripped end   | 6000.0224 |
| Power Supply Cord with IEC Connector C13 straight, stripped end | 6000.0214 |
| UK Power Supply Cord with IEC Connector C13, straight           | 6044.0215 |
| <a href="#">Power Supply Cord further types to 4740</a>         | ...       |

[Power Supply or Interconnection Cord Overview complete](#)



|  |           |
|--|-----------|
| UK Power Supply Cord with stripped ends                                    | 6044.0204 |
| Diverse Power Supply and Interconnection Cords 10 A                        | 6045.0114 |
| Diverse Power Supply and Interconnection Cords 10 A                        | 6003.0205 |
| Diverse Power Supply and Interconnection Cords 10 A                        | 6026.0205 |
| Diverse Power Supply and Interconnection Cords 10 A                        | 6049.0007 |
| <a href="#">Power Supply or Interconnection Cord further types to 4740</a> |           |