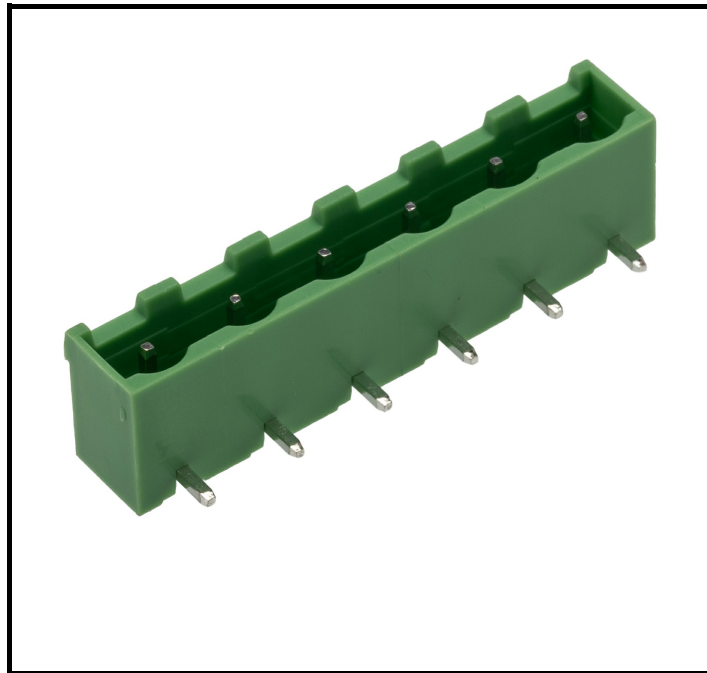


FEATURES

- **Board-to-Board Connector System:** Provides a reliable connection between PCBs, enhancing design flexibility.
- **Male Contact Gender:** Ensures compatibility with corresponding female connectors, facilitating easy integration.
- **Brass Contact Material:** Offers excellent conductivity and durability, ensuring long-term performance.
- **Tin Contact Plating:** Provides corrosion resistance, enhancing the lifespan of the connector.
- **15 A Current Rating:** Supports high-current applications, making it suitable for power-intensive setups.
- **PA66 Housing Material:** Delivers high mechanical strength and thermal stability, ensuring reliability under various conditions.
- **Wide Operating Temperature Range:** Operates efficiently from -40 °C to 105 °C, suitable for diverse environments.
- **Through Hole Mount Type:** Ensures secure and stable mounting on PCBs, enhancing mechanical stability.
- **7.62 mm Pitch:** Facilitates easy alignment and connection, simplifying assembly processes.

RS PRO 6 Contact Right Angle PCB Header

RS Stock No: 631-122



RS Professionally Approved Products bring to you professional quality parts across all product categories. Our product range has been tested by engineers and provides a comparable quality to the leading brands without paying a premium price.

Product Description

The RS PRO PCB Header is a robust and reliable connector designed for board-to-board applications. With its shrouded design and right-angle orientation, it ensures secure and efficient connections in various electronic assemblies. Ideal for high-current applications, it supports up to 15 A, making it suitable for demanding environments.

General Specifications

Connector System	Board-to-Board
Contact Gender	Male
Contact Material	Brass
Contact Plating	Tin
Mount Type	Through Hole
Number of Contacts	6
Number of Rows	1
Orientation	Right Angle
Product Type	PCB Header
Shrouded/Unshrouded	Shrouded
Tail Pin Length	3.7 mm

Electrical Specifications

Current	15 A
Voltage	300 V

Mechanical Specifications

Housing Material	PA66
Pitch	7.62 mm
Termination Type	Solder

Operation Environment Specifications

Maximum Operating Temperature	105 °C
Minimum Operating Temperature	-40 °C

Approvals

Standards/Approvals

ANSI-ESD S20.20:2021, CE, REACH, RoHS, UL

