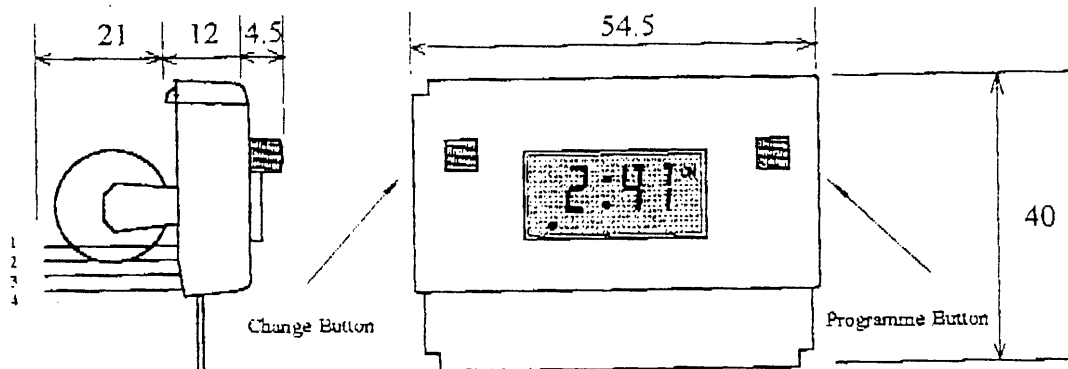


DATA SHEET MEU17 7 day industrial time controller module



- * 6 ON /OFF Programmes, daily, weekly, weekend or weekday options.
- * Easy 2 button programming.
- * Change/Override until next programme.
- * Rechargeable Metal Hydride battery back-up with 1000 Hr reserve.
- * Requires only an external resistor, diode and relay to switch mains.
- * Temperature range 0° to 55° C.

Operation

The programme button advances programme steps and the change button then updates the item selected. Day / days of week is first to be programmed followed by hours and minutes. The 6 ON/OFF programmes then follow, each in the sequence day / days, hours and minutes.

If, during programming, no button is pressed over a period of one minute then the display will revert to normal operation.

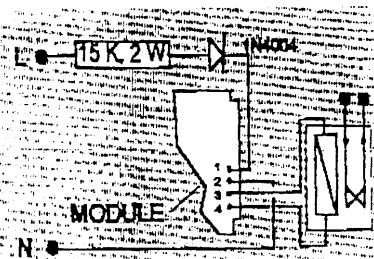
In normal operation, Pressing the change button changes the output until the next programme step.

Connections

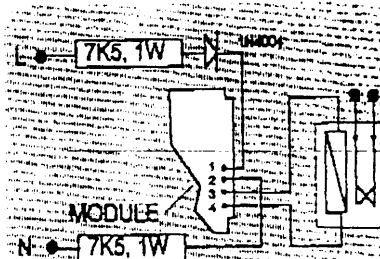
- Pin 1 Positive battery charge plus relay current. Min 0.50 mA (No relay)
- Pin 2 Common
- Pin 3 Relay connection.
- Pin 4. Output and relay connection. NPN open collector. Max. 10 mA, 47 V.

Typical Usage

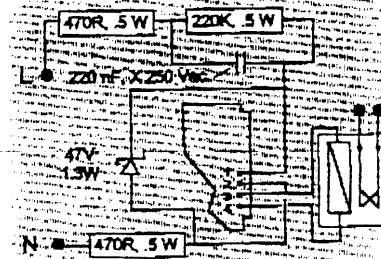
The following examples show the module driving a Shrack 48 V relay with power derived from the mains. Type RP330048 or RP331048 (Changeover contacts). In these configurations the relay pulls in at 47 V and is held at above 24 V with mains voltages down to 200 V.



Single Resistor PSU



Two Resistor PSU - gives
Optimum EMC Performance



Capacitor PSU