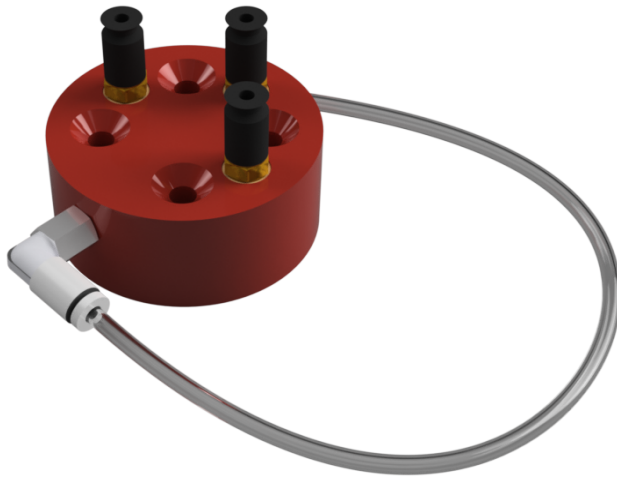




Vacuum pickup – V12

The V12 vacuum gripper option for the R12 robot arm comprises the suction cups and manifold all in one unit. The result is a single attachment that is compact and light weight, ideal for the R12 robot.

This option is usually supplied ready fitted to the robot arm. It is supplied complete with valve and vacuum ejector requiring no extra attachments between the robot and the controller.



Features

The V12 vacuum unit is supplied with 3 ports and 3 pickup cups and can operate with 1-3 cups attached, provided the open ports are blocked to maintain air pressure.

The option comprises the pickup itself, services through the arm with push-fit connectors and a baseplate carrying a control valve and Venturi vacuum ejector pre-assembled with cable and connector to the robot controller.

Specifications

- Air consumption: 46 L/min (ANR)
- Maximum vacuum pressure: -88kPa (12.76 Psi)
- Maximum suction flow rate: 24 L/min (ANR)
- Total suction cups supplied: 3 on the default model.

Applications and Uses

Vacuum pickup is ideal for items that have a flat smooth surface to contact. Vacuum pickups are less precise than grippers but will lift from the top of an item as opposed to gripping from the sides.

ST Robotics can also customise the V12 housing if the default model is unsuitable to your needs.

Technical support:

Email: support@strobotics.com

Telephone: +44 122 342 0288

Disclaimer

ST Robotics makes every effort to ensure that the information contained on the data sheet ("the Information") is accurate and complete. However, errors and omissions may occur from time to time and we are not able to guarantee the accuracy of the Information. Therefore, we cannot be held liable for any reliance which you place on the Information. ST Robotics does not give any warranties in respect of the datasheet or the information.

