

DRA Nylon self-drill fixing for drywall

Self-drilling light-duty nylon fixing for use in plasterboard sheets and gypsum fibreboards.



Product information

Features and benefits

- Flange prevents accidental push through in plasterboard.
- Short length ideally suited for dry lined walls.
- Recommended screw diameter: 3.5 - 4.2 mm
- Plug sleeve: PA6 + 30GF (polyamide reinforced with fibre glass - 30%).

Applications

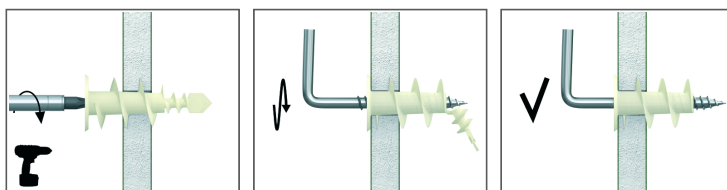
- Ideal for installation of sockets, light switches and other electrical fittings

Base materials

Approved for use in:

- Plasterboard

Installation guide



1. Using a PZ2 screwdriver, push fixing point firmly into the board until thread engages.
2. Maintaining a firm pressure, screw in fixing until flush with the base material.
3. Place fixture in position, insert screw and tighten until secure.