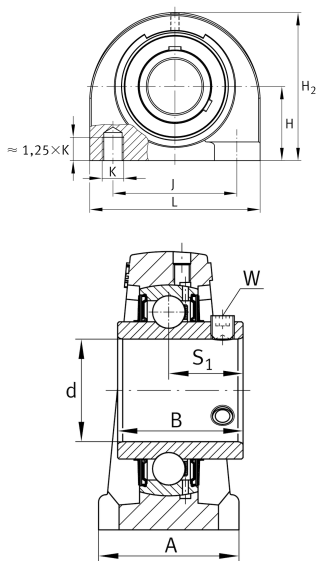
**FAG****UCPA201**

Plummer block housing unit

Plummer block housing units UCPA, cast iron housing, with short base, radial insert ball bearing with grub screws in inner ring, RSR seals

Technical information



Your current product variant

Material	GG	Grey cast iron
Housing clearance	J7	Normal swivel torque
Material	GG	Cast iron

Main Dimensions & Performance Data

d	12 mm	Bore diameter
L	76 mm	Length total
H 2	62 mm	Height
C _r	13,600 N	Basic dynamic load rating, radial
C _{0r}	6,600 N	Basic static load rating, radial
C _{ur}	345 N	Fatigue load limit, radial
≈m	0.649 kg	Weight

Mounting dimensions

J	52 mm	Distance fixing bore
K	M10	Thread fixing bore



Dimensions

H	30.2 mm	Distance shaft axis
A	38 mm	Width (base)
Q	M6	Connection thread for lubrication
B	31 mm	Width of inner ring
S ₁	18.3 mm	Distance of raceway to locking collar

Additional information

PA204	Housing
UC201	Bearing designation

Temperature range

T _{min}	-20 °C	Operating temperature min.
T _{max}	120 °C	Operating temperature max.