

Features

- Maximum operating pressure is 12 bar.
- Operating temperature range -20°C to +100°C.
- Material: argely Stainless Steel with 17% chromium content
- Plastic coupling body
- ISO 6150-C
- Single Shut Off System
- Large all-in-one steel push button (13% hardened chromium content)
- The functional parts have a great resistance to wear and tear, shocks and corrosion.
- 2-Stage push button coupler for safety

RS PRO Pneumatic Quick Connect Coupling

RS Stock No.: 0309302



RS PRO is the own brand of RS. The RS PRO Seal of Approval is your assurance of professional quality, a guarantee that every part is rigorously tested, inspected, and audited against demanding standards. Making RS PRO the Smart Choice for our customers.

Product Description

RS PRO Series 107 Quick Connect Couplings Plugs

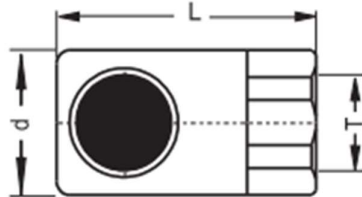
Pneumatic quick-connect coupling connectors are found across industry in pneumatic systems as diverse as robotic assembly lines and other equipment.

- Maximum operating pressure is 12 bar.
- Operating temperature range -20°C to +100°C.
- Material: largely Stainless Steel with 17% chromium content
- Plastic coupling body
- ISO 6150-C
- Single Shut Off System
- Large all-in-one steel push button (13% hardened chromium content)
- The functional parts have a great resistance to wear and tear, shocks and corrosion.
- 2-Stage push button coupler for safety

Specifications

Manufacturer Series	107
Coupling Type	Quick Connect Coupling Socket
Connection Standard	ISO 6150-C
Minimum Operating Temperature	-20°C
Maximum Operating Temperature	+100°C
Maximum Operating Pressure	12 bar
Flow Direction & Sealing	Self-Sealing Coupling
Safety	2-Stage
Material	Stainless Steel
Finish	Plastic
Connection Type	Threaded
Thread Size	1/4 in
Thread Standard	G
Thread Gender	Female
Coupling Gender	Female
Threaded Connection	G 1/4 Female
Seal material	Nitrile Rubber
Hose Barb Connection	N/A

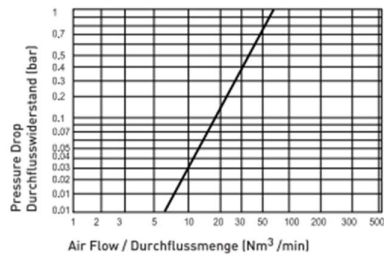
Specifications



Couplings Female Thread

Dimensions (mm)		
d	L	T
27.5	54	1/4 G

Pneumatic charts flow rate/Pressure drop from the single shut-off system
Pneumatische Durchflusswiderstandskurven mit einseitiger Absperrung (Druckluft)



Couplings & Plugs - Kupplungen & Nippel

Standard Serie

Nominal Ø (mm) - Nennweite
Cross section (mm²) - Querschnitt

5.5 mm
23.5 mm²

Max. Working Press. -
Max. Betriebsdruck

Bar
PSI

12
174

O-Ring (100°C)

NBR

