

.140 DIA PIN 20-14 PTPBR ✓ ACTIVE

MATE-N-LOK | Commercial MATE-N-LOK

TE Part # 61627-1

TE Internal #: 61627-1

[View on TE.com >](#)



Connectors > Power Connectors > Power Contacts



Product Type: **Contact**

Operating Voltage: **250 VAC**

Wire Size: **.5 – 2 mm²**

Connector System: **Wire-to-Wire**

Features

Product Type Features

Product Type	Contact
Connector System	Wire-to-Wire
Connector & Contact Terminates To	Wire & Cable

Electrical Characteristics

Operating Voltage	250 VAC
-------------------	---------

Contact Features

Contact Current Rating (Max)	17 A
Contact Type	Pin
Contact Base Material	Brass
Contact Mating Area Plating Material	Tin
Contact Termination Area Plating Material	Tin
Wire Contact Termination Area Plating Material	Tin
Contact Angle	Straight

Termination Features

Termination Type	Crimp
------------------	-------

Mechanical Attachment



Contact Retention Type Within Housing	Locking Lance
Connector Mounting Type	Cable Mount (Free-Hanging)
Contact Retention in Housing	With
Wire Insulation Support	With

Dimensions

Wire Size	.5 – 2 mm ²
Mating Pin Diameter	3.56 mm[.14 in]
Accepts Wire Insulation Diameter Range	2.54 – 4.57 mm[.1 – .18 in]

Usage Conditions

Operating Temperature Range	-55 – 105 °C[-67 – 221 °F]
-----------------------------	----------------------------

Operation/Application

Circuit Application	Power
For Multiple Crimp	No

Industry Standards

Glow Wire Rating	Standard Part - Not Glow Wire
Agency/Standard	CSA, UL
UL Flammability Rating	UL 94V-2
UL File Number	E28476

Packaging Features

Packaging Method	Reel
Packaging Quantity	2500

Other

Wire/Cable Type	Discrete Wire
For Use With	Pin (Cap) Housing
Comment	HDM Applicator part number ending in -1 is used on AMPOMATOR CLS Machine with T or G Terminators, -2 is used on AMP-O-ELECTRIC Model K Machine, -6 is used on AMP-O-ELECTRIC Model G Machine.

Product Compliance

[For compliance documentation, visit the product page on TE.com>](#)

EU RoHS Directive 2011/65/EU	Compliant
------------------------------	-----------

EU ELV Directive 2000/53/EC

Compliant

China RoHS 2 Directive MIIT Order No 32, 2016

No Restricted Materials Above Threshold

EU REACH Regulation (EC) No. 1907/2006

Current ECHA Candidate List: JAN 2019 (197)
Candidate List Declared Against: JAN 2019 (197)

Halogen Content

Low Halogen - Br, Cl, F, I < 900 ppm per homogenous material. Also BFR/CFR/PVC Free

Solder Process Capability

Not applicable for solder process capability

Product Compliance Disclaimer

This information is provided based on reasonable inquiry of our suppliers and represents our current actual knowledge based on the information they provided. This information is subject to change. The part numbers that TE has identified as EU RoHS compliant have a maximum concentration of 0.1% by weight in homogenous materials for lead, hexavalent chromium, mercury, PBB, PBDE, DBP, BBP, DEHP, DIBP, and 0.01% for cadmium, or qualify for an exemption to these limits as defined in the Annexes of Directive 2011/65/EU (RoHS2). Finished electrical and electronic equipment products will be CE marked as required by Directive 2011/65/EU. Components may not be CE marked. Additionally, the part numbers that TE has identified as EU ELV compliant have a maximum concentration of 0.1% by weight in homogenous materials for lead, hexavalent chromium, and mercury, and 0.01% for cadmium, or qualify for an exemption to these limits as defined in the Annexes of Directive 2000/53/EC (ELV). Regarding the REACH Regulations, TE's information on SVHC in articles for this part number is still based on the European Chemical Agency (ECHA) 'Guidance on requirements for substances in articles' (Version: 2, April 2011), applying the 0.1% weight on weight concentration threshold at the finished product level. TE is aware of the European Court of Justice ruling of September 10th, 2015 also known as O5A (Once An Article Always An Article) stating that, in case of 'complex object', the threshold for a SVHC must be applied to both the product as a whole and simultaneously to each of the articles forming part of its composition. TE has evaluated this ruling based on the new ECHA "Guidance on requirements for substances in articles" (June 2017, version 4.0) and will be updating its statements accordingly.

Compatible Parts



Applicators(4)



Insertion & Extraction Tools (1)



Portable Crimp Tools(2)

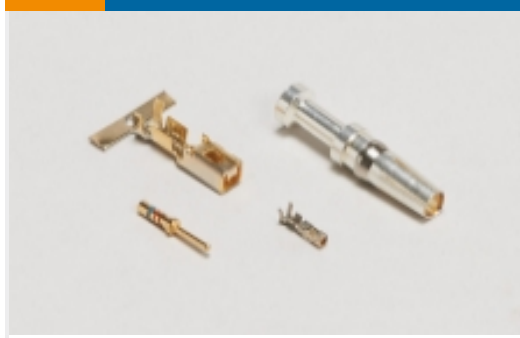


Rectangular Connector Housings(2)



Rectangular Power Connectors(8)

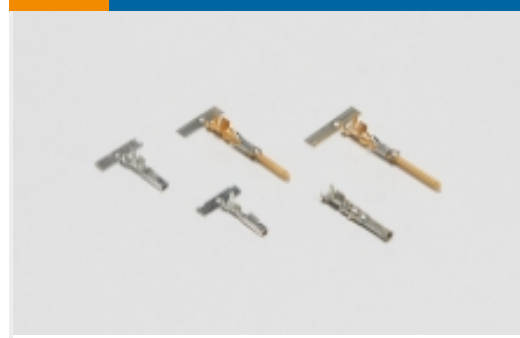
Also in the Series | Commercial MATE-N-LOK



Connector Contacts(55)



Crimp Wire Pins, Tabs & Ferrules(3)



Power Contacts(132)



Rectangular Caps & Covers (2)



Rectangular Connector Housings(20)



Rectangular Connector Seals(1)



Rectangular Power Connectors(171)

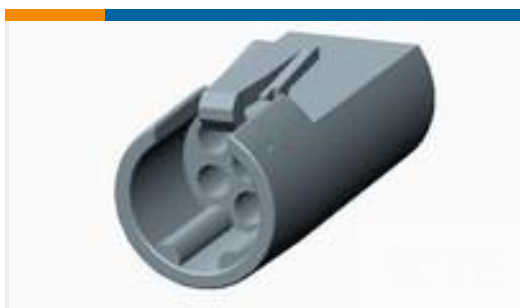


Standard Rectangular Connectors(10)

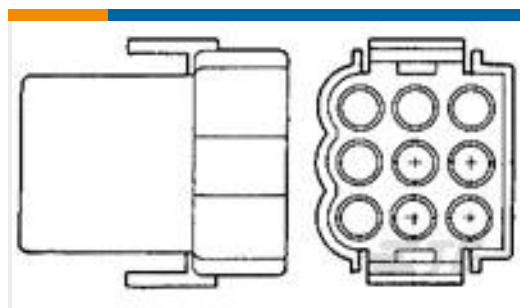


Wire-to-Board Connector Contacts(1)

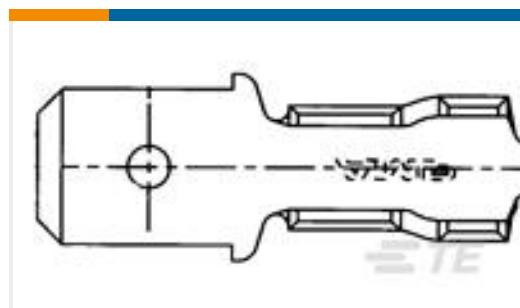
Customers Also Bought



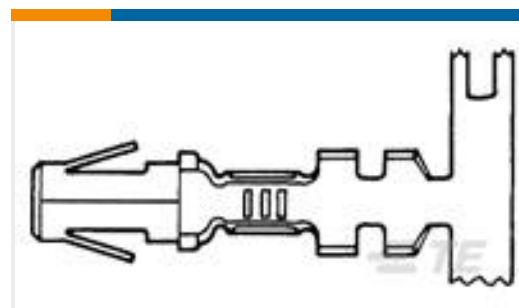
TE Part #794435-1
06P PLUG HSG HINGE
CONN



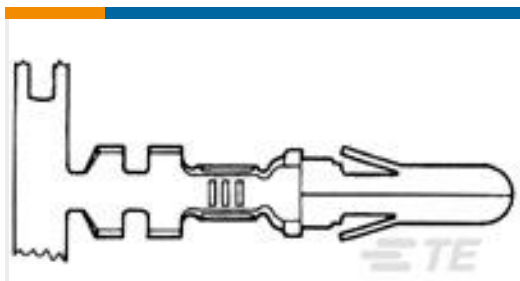
TE Part #1-480673-0
09P .140 MNL CAP PM
NAT



TE Part #41412
FASTON 250(6.3MM) TAB
18-14 AWG TPBR



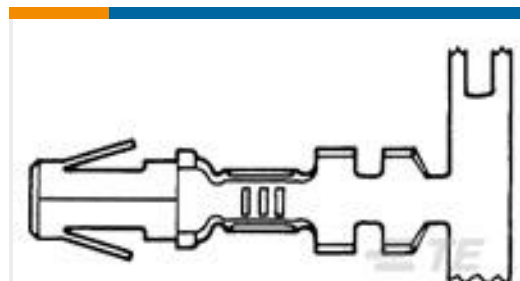
TE Part #350200-1
.140 DIA SOK 14-10 PTPBR



TE Part #350201-1
.140 DIA PIN 14-10 PTPBR



TE Part #61352-1
RING .197 (5.0 MM) 10-6
AWG TPBR



TE Part #61626-1
.140 DIA SOK 20-14 PTPBR



TE Part #41531
FASTON 250(6.3MM)
FLAG REC 18-12 AWG BR



Documents

Product Drawings

[.140 DIA PIN 20-14 PTPBR](#)

English

CAD Files

Customer View Model

[ENG_CVM_61627-1_D.3d_igs.zip](#)

English

Customer View Model

[ENG_CVM_61627-1_D.3d_stp.zip](#)

English

Customer View Model

[ENG_CVM_61627-1_D.2d_dxf.zip](#)

English

3D PDF

English

Datasheets & Catalog Pages

[SOFT_SHELL_PIN_SOCKET_CONNECTORS_STANDARD_DENSITY](#)

English

Product Specifications

[MATE-N-LOK .140 Diameter Pin & Socket Contacts](#)

Japanese

[Application Specification](#)

Japanese

[Application Specification](#)

English

[MATE-N-LOK .140 Diameter Pin And Socket Contacts](#)

English

[Application Specification](#)

Japanese

Product Environmental Compliance

[TE Material Declaration](#)

English

.140 DIA PIN 20-14 PTPBR

TE Part # 61627-1
TE Internal #: 61627-1

