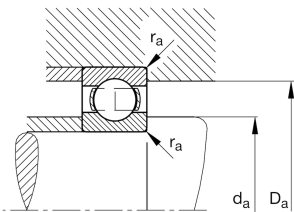
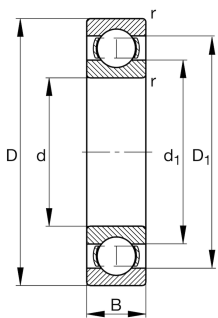
**FAG****6060-M**

Deep groove ball bearing

Deep groove ball bearing 60.-M, single row,
solid brass cage

Technical information



Your current product variant

Sealing	Without	Not sealed
Cage	M	Solid brass cage, rolling element guided
Tolerance class	PN	Normal (PN)
Dimensional / heat stabilization	S1	Rings dimensional stabilized up to 200°
Lubricant	Without	Bearing not greased
Radial internal clearance	CN (Group N)	Normal internal clearance
Bore type	Z	Cylindrical

Main Dimensions & Performance Data

d	300 mm	Bore diameter
D	460 mm	Outside diameter
B	74 mm	Width
C _r	365,000 N	Basic dynamic load rating, radial
C _{0r}	520,000 N	Basic static load rating, radial
C _{ur}	17,200 N	Fatigue load limit, radial
n _G	2,370 1/min	Limiting speed
n _{gr}	1,930 1/min	Reference speed
≈m	44.5 kg	Weight



Mounting dimensions

$d_{a\min}$	314.6 mm	Minimum diameter shaft shoulder
$D_{a\max}$	445.4 mm	Maximum diameter of housing shoulder
$r_{a\max}$	3 mm	Maximum fillet radius

Dimensions

r_{\min}	4 mm	Minimum chamfer dimension
D_1	410.95 mm	Shoulder diameter outer ring
d_1	350.7 mm	Shoulder diameter inner ring


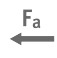
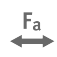



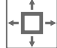
Temperature range

T_{\min}	-30 °C	Operating temperature min.
T_{\max}	200 °C	Operating temperature max.

Calculation factors

f_0	15.8	Calculation factor
-------	------	--------------------

Characteristics

-  Radial load
-  Axial load in one direction
-  Axial load in two directions
-  Grease Lubrication
-  Oil Lubrication
-  Not sealed
-  Large bearing