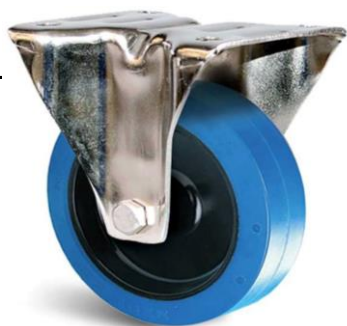


Description

STAINLESS STEEL TOP PLATE CASTOR, BLUE ELASTIC RUBBER 80MM

Fixed

KF41BA080-571RX



Part Number

Swivel

KP41BA080-571RX

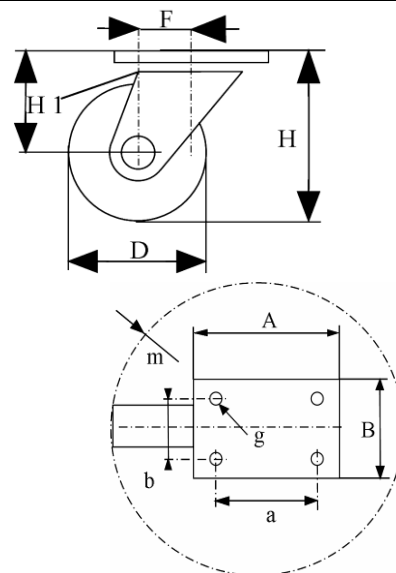


Swivel and brake

KP41BD080-571RX



	Fixed	Swivel	Swivel+brake
Wheel Diameter ØD	80 mm		
Overall Height H	108 mm ±1		
Size of plate A X B	105 x 85 mm±1		
Plate hole centres a x b	80 x 60 mm±0,3		
Plate hole	9 mm		
Offset F ±1	\	36 mm	36 mm
Width of Tread	34 mm±0,5		
Hardness of tread	shore A ± 70°		
Load capacity	100 Kg		
Weight	0,5 kg	0,62 kg	0,78 kg
Temperature	- 20 / + 60 °C		



Castor Assembly :

Pressed stainless steel -AISI 304-. Swivel on two rows of balls.
Fastening by top plate.
Total lock. Metal pedal.

Wheel :

Wheel centre made of Black Polyamide.
Tread : Solid, Blue bonded elastic Rubber. Non marking.
Hub : Stainless steel roller bearing.

Features :

Low starting effort. High load capacity.
Smooth and quiet handling on all types of floors.
Absorbs shocks and vibrations. Resistant to wear.
100% anti-corrosion. Easy to clean. Specially designed for humid environments.
Suited for Food industry, Hospital or Industrial Kitchen equipment.
Non staining blue rubber.
Medium duty.