

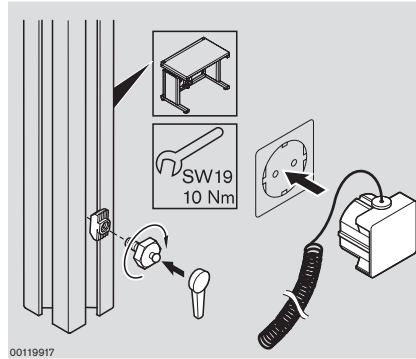
Workstation accessories

# Components for ESD applications



Set of grounding components for defined grounding of ESD workstations and protection of ESD-sensitive components.  
 Conduction resistance  $R_A = 1 \times 10^6 \Omega$  (DIN EN 61 340-5-1).

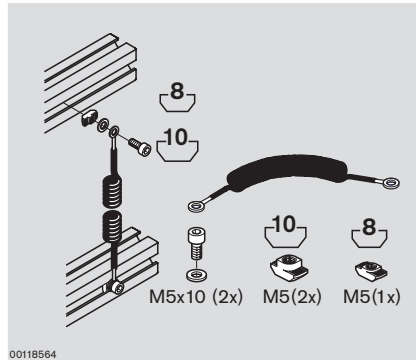
Incl. fastening kit.



Material no.	
	<b>3 842 522 087</b>

Grounding cable to create defined conductive paths between strut profiles to protect ESD-sensitive components.

Incl. fastening kit.



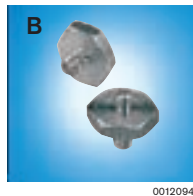
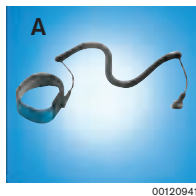
Material no.	
	<b>3 842 519 465</b>

Wrist band (A) with connection piece (B) for defined grounding of people and protection of ESD-sensitive components.  
 We recommend using M6 T-nuts to attach to the strut profile.



Wrist band (A), connection piece (B)

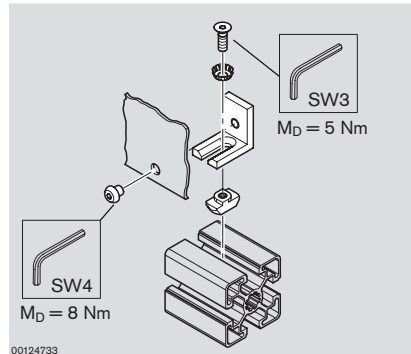
Material no.	
<b>A</b>	<b>3 842 516 908</b>
<b>B</b>	10 <b>3 842 516 905</b>



Material no.	
M6 T-nut	<b>3 842 530 285</b>
	100

Workstation accessories

Potentialfix for defined grounding of surface elements such as e.g. side panels.



Potentialfix

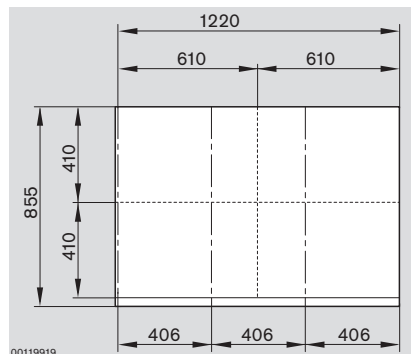
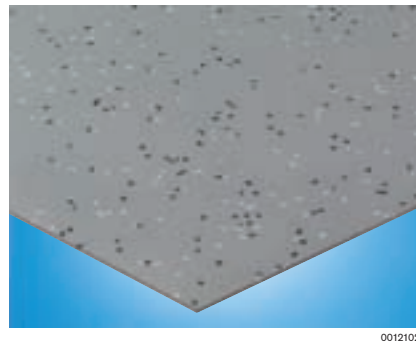
**Material no.**  
 ⚠️ **3 842 518 831**

Conductive mat insert to protect ESD-sensitive components.  
 ESD mat inserts according to your specifications; available in various sizes as modifications from Rexroth (maximum size: 1220 x 12000 mm).

To create safe and conductive connections, we recommend using adhesive copper tape to fasten to material shelves and trolleys.

Conduction resistance  
 $R_A = 1 \times 10^6 - 1 \times 10^9 \Omega$  according to DIN EN 61 340-5-1.

Material: rubber, easy to cut to size.  
 Thickness: 2 mm



ESD mat insert

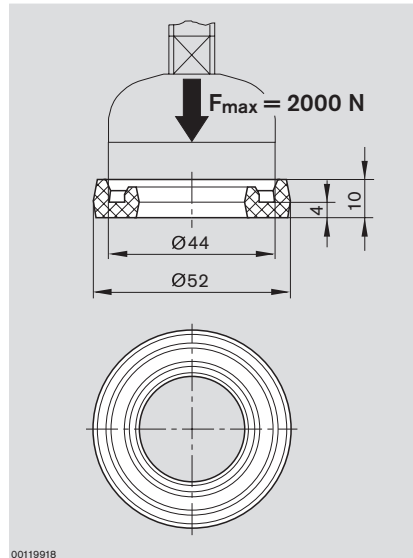
**Material no.**  
 1220 mm x 855 mm ⚠️ **3 842 522 012**

Workstation accessories

## Damping rings

Damping rings insulate frames against conductive floors, protect floors and prevent vibrations from being transmitted.

Material: PUR, resistant to mineral oil and organic solvents. Color: natural.  
Shore hardness A: 70-80.



Damping rings

		Material no.
20		<b>3 842 521 817</b>

