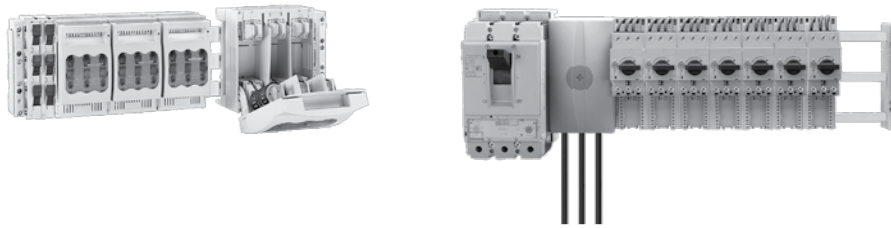


BUSBAR SYSTEM OVERVIEW



INDUSTRY STANDARDS

Fuseholders:

UL 4248 Listed; File No. E230163 and E342576
cUL Listed per CSA C22.2 No. 39; File No. E230163

CSA Certified

Flexible Busbars:

UL 67 & 891 Component Recognized; File No. E197039
cUL Component Recognized per CSA C22.2 No. 29 & 244; File No. E197039

Busbar Components:

UL 508 Listed; File No. E123577
cUL Listed per CSA C22.2 No. 14; File No. E123577

CE

APPLICATION

Busbar systems distribute power throughout a panel by enabling components to be mounted onto adapters that snap onto three copper bars attached to end supports connected to the back panel. Establishing an electrical connection and mechanically fastening in one step, this design reduces wiring time by up to 40 percent and allows power to be easily distributed to multiple components while being touch-safe rated to IP20. In addition, busbar systems utilize pre-wired adapters and sliding DIN rails, enabling components to be placed closer together while reducing the raceway and bending radius space required. With this arrangement, the 60-mm Busbar System consumes up to 25 percent less panel space than traditional wiring.

- Distributes 3-phase power, up to 690 V, coming from a main breaker or fuse block; can also be used for single-phase or DC power applications
- Convenient solution for delivering power throughout panels containing smaller devices and fed by a 100 A or higher main breaker
- Provides direct mounting solutions for major component manufacturers (ABB, Allen-Bradley, Eaton Cutler-Hammer, General Electric, Merlin Gerlin, Moeller, Siemens ITE, Schneider Square D®)

Drawings can be found on www.hoffmanonline.com

Technical information and support can be found on Wöhner's website at www.woehner.com/en/technics/

Remove the "HB" prefix from Hoffman's catalog numbers to find the comparable Wöhner part numbers.

AMBUS, CRITO, EQUES, J-CARRIER and QUADRON are trademarks of Wöhner GmbH & Co. KG.

FEATURES

- The 60-mm on-center distance of the busbars minimizes the overall footprint, allowing large ampacities to be distributed in a small space
- Ampacity range of 0–2000 A covers most key applications
- Reduces panel wiring time by up to 40 percent versus conventional wiring
- Electrical and mechanical connections are completed in one step
- The design and layout are efficient and can be changed at any time; innovative terminal solutions connect wires directly to the busbar system; no drilling or tapping is required
- Requires up to 25 percent less panel space than conventional wiring by eliminating some raceway and reducing bending radius space
- Provides the highest standard of safety; designed to be touch-safe to IP20
- Snap-together design makes planning, project design and installation easy; fuse bases and fuse switch disconnectors are simply "clicked" onto the busbars
- Application versatility reduces inventory requirements
- Adapts to most cabinets and enclosures; position busbars vertically or horizontally anywhere within grid dimensions for optimum use of space
- Add components easily to extend the panel; number of connections is minimized
- Shielded connections reduce arc flash danger

SPECIFICATIONS

- Busbar is constructed of tinned copper for superior corrosion resistance

ORDERING

For assistance with layouts, drawings and specifying a busbar system, contact Hoffman Customer Service at 763 422 2211.

MCCB MOUNTING REFERENCE

MCCB Mounting Reference All major manufacturers

Manufacturer	MCCB Frame	Adapter	UL508	cUL
ABB	T-max 1	HB32575	•	•
	T-max 2	HB32575	•	•
	T-max 4	HB32601	•	•
	T-max 5	HB32593	•	•
	140-CMN	HB32549	•	•
Allen-Bradley	140U-H, Top ^a	HB32577	•	•
	140U-H, Bottom ^b	HB32571	•	•
	140U-J	HB32137	•	•
	140U-L	HB32138	•	•
Eaton (Cutler-Hammer)	EG-Frame Top ^a	HB32570	•	•
	EG-Frame Bottom ^b	HB32571	•	•
	JG-Frame	HB32137	•	•
	K-Frame	HB32138	•	•
	LG-Frame	HB32138	•	•
General Electric	FD160	HB32575	•	•
	FD250	HB32156	•	•
Mertlin Gerin	NS80	HB32575	•	•
	NS100	HB32156	•	•
	NS250	HB32156	•	•
	NS400	HB32157	•	•
	NS630	HB32157	•	•
Mitsubishi	NF250	HB32592	•	•
Eaton (Moeller)	NZM1	HB32570	•	•
	NZM2-XKR4	HB32140	•	•
	NZM3-XKR130	HB32170	•	•
Siemens	3VL1	HB32976	•	•
	3VL2	HB32977	•	•
	3VL3	HB32977	•	•
	3VL4	HB32975	•	•
	EG-Frame (NEG-Type), Top ^a	HB32577	•	•
	EG-Frame (NEG-Type), Bottom ^b	HB32571	•	•
	NGG-TypeTop ^{ac}	HB32577	•	•
	NGG-Type, Bottom ^{bc}	HB23571	•	•
Schneider Square D	NGG-Type (up to 80 A), DIN rail mount	HB32469, HB32963	•	•
	H-Frame	HB32140, HBUS76490	•	•
	J-Frame	HB32156	•	•
Terasaki	D-Frame	HB32157	•	•
	XS250	HB2592	•	•

^aTop refers to the adapter connection to the top of the breaker, typical of a branch circuit protective device.

^bBottom refers to the adapter connection to the bottom of the breaker, typical of a feeder circuit protective device.

^cSome modification may be required.

SUPPORT SPACING AND SHORT CIRCUIT CURRENT RATING (SCCR) VALUES - HB0508, HB01508

Consult Hoffman for HB01231 and HB01232 support spacing and SCCR values.

Circuit Breaker Protected System (Any DIVQ/7)

Busbar, cross section	Max. CB Rating	SCCR	Max. support spacing ^a
480VAC			
HB01618 (12x5 mm)	250 A	65 kA	800 mm ^a
HB01620 (20x5 mm)	400 A	65 kA	800 mm ^a
HB01622 (30x5 mm)	400 A	65 kA	800 mm
HB01622 (30x5 mm)	600 A	50 kA	800 mm
HB01625 (30x10 mm)	400 A	65 kA	800 mm
HB01625 (30x10 mm)	600 A	50 kA	800 mm
600VAC			
HB01618 (12x5 mm)	250 A	25 kA	800 mm ^a
HB01620 (20x5 mm)	400 A	35 kA	800 mm ^a
HB01622 (30x5 mm)	600 A	25 kA	800 mm
HB01625 (30x10 mm)	400 A	35 kA	800 mm
HB01625 (30x10 mm)	600 A	25 kA	800 mm

^aConsideration should be made for mechanical support of the devices mounted to the busbar system.

Fuse Protected System

Busbar, cross section	Max. Fuse Rating	SCCR	Max. support spacing ^a
480VAC			
HB01618 (12x5 mm)	400 A - J, T, RK1	100 kA	800 mm ^a
HB01620 (20x5 mm)	400 A - RK1	100 kA	800 mm ^a
HB01620 (20x5 mm)	500 A - J, T	100 kA	800 mm ^a
HB01622 (30x5 mm)	400 A - RK1	100 kA	800 mm
HB01622 (30x5 mm)	500 A - J, T	100 kA	800 mm
HB01625 (30x10 mm)	400 A - RK1	100 kA	800 mm
HB01625 (30x10 mm)	600 A - J, T	100 kA	800 mm
600VAC			
HB01618 (12x5 mm)	100 A - RK1	100 kA	800 mm ^a
HB01618 (12x5 mm)	175 A - J, T	100 kA	800 mm ^a
HB01620 (20x5 mm)	200 A - RK1	100 kA	800 mm ^a
HB01620 (20x5 mm)	400 A - J, T	100 kA	800 mm ^a
HB01622 (30x5 mm)	400 A - RK1	100 kA	800 mm
HB01622 (30x5 mm)	500 A - J, T	100 kA	800 mm
HB01625 (30x10 mm)	400 A - RK1	100 kA	800 mm
HB01625 (30x10 mm)	450 A - J, T	100 kA	800 mm

^aConsideration should be made for mechanical support of the devices mounted to the busbar system.

Unprotected System

Busbar, cross section	Max. Fuse Rating	SCCR	Max. support spacing ^a
HB01618 (12x5 mm)	150 A, 600 VAC	18 kA	250 mm, 400 mm ^a
HB01620 (20x5 mm)	362 A, 600 VAC	18 kA	250 mm, 400 mm ^a
HB01622 (30x5 mm)	500 A, 600 VAC	22 kA	400 mm
HB01622 (30x5 mm)	500 A, 600 VAC	25 kA	250 mm
HB01625 (30x10 mm)	756 A, 600 VAC	22 kA	400 mm
HB01625 (30x10 mm)	756 A, 600 VAC	25 kA	250 mm

^aConsideration should be made for mechanical support of the devices mounted to the busbar system.

END SUPPORT KIT



This will be the first part of any system bill of material utilizing rectangular busbar between 12 x 5 - 30 x 10.

BULLETIN: HB2

Catalog Number	Description	Qty.	UL508	cUL
HB00508	Contains 2 busbar supports (HB01508) and 2 end covers (HB01573)	1 kit	•	•

UL BUSBAR SUPPORT

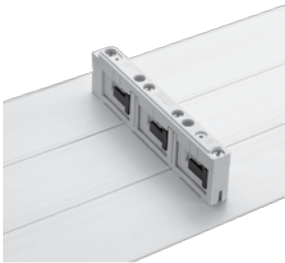


Holds the rigid copper busbars that span the enclosure width or height in place. Systems can be mounted either horizontally or vertically. These supports provide critical bracing against the forces exerted upon the busbar structure in the event of a short circuit condition. While typically mounted to the backpanel of the enclosure, these supports can also be mounted on the frame or support structure of a modular PROLINE™ enclosure system. Each support can be adjusted to accommodate all six rectangular standard sizes of rigid copper busbar.

BULLETIN: HB2

Catalog Number	Description	Qty.	UL508	cUL
HB01508	For busbars 12, 20, 30 x 5/10, 3-pole with internal screw holes	1	•	•

BASE PLATE



Serves as an insulator between the current-carrying parts of the busbar structure and adaptor components and the metallic backpanel of the enclosure. This component is required to satisfy UL508 requirements for 2-in. over surface and 1-in. through-the-air arcing distances defined under the UL standard.

BULLETIN: HB2

Catalog Number	Description	Qty.	UL508	cUL
HB01518	For UL Busbar Support HB01508, HB01231, HB01232, 240 x 1100	1	•	•
HB01515	For UL Busbar Support HB01508, HB01231, HB01232, 240 x 700	1	•	•

HB01231 and HB01232 do not require base plate for UL approval.

EARTH/NEUTRAL BUSBAR SUPPORTS



These single-pole supports can accommodate all six rectangular sizes of rigid copper busbar to be used for grounding purposes. When mounted immediately below the three-pole support, the 60-mm system spacing is maintained for a 4-pole system.

BULLETIN: HB2

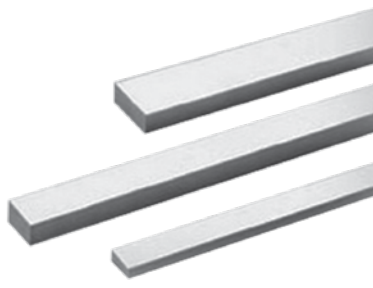
Catalog Number	Description	Qty.
HB01601	For busbars 12, 20, 30 x 5/10 1-pole for mounting individually. Includes earth and neutral labels.	1

END COVER


Insulates the ends of the three rigid copper busbars installed in the HB01508 busbar support.

BULLETIN: HB2

Catalog Number	Description	Qty.	UL508	cUL
HB01573	End Cover	2	•	•

STANDARD COPPER BUSBAR


Manufactured to strict engineering tolerances for the 60-mm busbar system, all busbars are tin-plated copper for superior corrosion resistance in harsh environments.

BULLETIN: HB1

Catalog Number	Description	Length (m)	UL Current Capacity (max.)	IEC Current Capacity (max.)	Qty. ^a	UL508	cUL
HB0161812	12 x 5	1.2	150 A	250 A	3 bar	•	•
HB01618	12 x 5	2.4	150 A	250 A	3 bar	•	•
HB0162012	20 x 5	1.2	362 A	400 A	3 bar	•	•
HB01620	20 x 5	2.4	362 A	400 A	3 bar	•	•
HB0162212	30 x 5	1.2	500 A	550 A	3 bar	•	•
HB01622	30 x 5	2.4	500 A	550 A	3 bar	•	•
HB0162312	12 x 10	1.2	300A	450A	3 bar	•	•
HB01623	12 x 10	2.4	300A	450A	3 bar	•	•
HB0162412	20 x 10	1.2	564A	630A	3 bar	•	•
HB01624	20 x 10	2.4	564A	630A	3 bar	•	•
HB0162512	30 x 10	1.2	756 A	800 A	3 bar	•	•
HB01625	30 x 10	2.4	756 A	800 A	3 bar	•	•
HBCUCUT	---	Custom	---	---	3 bar		

^aTo order models in qty. 1 use catalog number with HBB prefix (i.e. HBB0161812, HBB01623)

STANDARD COPPER BUSBAR, FOR DOUBLE-T AND TRIPLE-T BUSBAR SECTIONS


Use in higher-current applications between 756 A and 2,000 A (please contact Hoffman regarding how to achieve 4,000 A). The outer-most section of these symmetrical profile busbars are 30 x 10 mm. All 60-mm system components can be mounted on systems using this busbar structure.

BULLETIN: HB1

Catalog Number	Description	Length (m) ^a	Cross section (mm ²)	UL Current Capacity (max.)	IEC Current Capacity (max.)	Qty.	UL508	cUL
HB01609	Double-T busbar section, tin plated	2.4	500	1200 A	1250 A	1	•	•
HB01608	Double-T busbar section, tin plated	2.4	720	1400 A	1600 A	1	•	•
HB01187	Triple-T busbar section, tin plated	2.4	1140	1800 A ^b	2500 A	1	•	•

^aShorter lengths available on request.

^bUp to 2000 A within 800 mm of the power connection for HB01187

BUSBAR SUPPORT, FOR DOUBLE-T BUSBAR SECTIONS


This busbar support is suitable for both the 500-mm² and 720-mm² Double-T profiles. Use to fasten the busbars to a backpanel or modular enclosure system structure. The supports also serve as bracing against the forces present during short circuit conditions.

BULLETIN: HB2

Catalog Number	Description	Qty.	UL508	cUL
HB01876	1-pole, without end cover	1	---	---
HB01231	3-pole, without end cover	2	•	•

BUSBAR SUPPORT, FOR TRIPLE-T BUSBAR SECTIONS



Suitable for the 1140-mm² Triple-T profile. Use to fasten the busbars to a backpanel or modular enclosure system structure. The supports also serve as bracing against the forces present during short circuit conditions.

BULLETIN: HB2

Catalog Number	Description	Qty.	UL508	cUL
HB01232	3-pole, without end cover	2	•	•

END COVER, FOR DOUBLE-T AND TRIPLE-T BUSBAR SECTIONS



Insulates the ends of three rigid copper busbars installed in the HB01231 and HB01232.

BULLETIN: HB2

Catalog Number	Description	Qty.	UL508	cUL
HB01234	For HB01231 and HB01232	2	•	•

BUSBAR COVER, FOR INDIVIDUAL BUSBARS (INDEPENDENT OF THE SYSTEM)



Plastic cover for standard busbar, 12 x 5 – 30 x 10, as well as double-T and triple-T profile busbars. Provides touchsafe security while covering unused sections of busbar that can be uncovered during future system expansion.

BULLETIN: HB2

Catalog Number	Description	Length (m)	Qty.	UL508	cUL
HB01244	For 12 x 5 mm, 20 x 5 mm, 30 x 5 mm	1	2	•	•
HB01245	For 30 x 10 mm	1	2	•	•
HB01252	For Double-T and Triple-T busbar sections	1	1	•	•

RESERVE SECTION COVER, 3-POLE



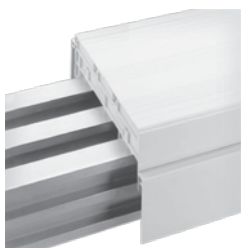
Use to provide touchsafe protection of all three bars of a 60-mm system. Cover section is sold in 1100-mm lengths and can be cut to length. Mounts on a set of plastic brackets that clip directly to the busbar of your system.

BULLETIN: HB2

Catalog Number	Description	Length (mm)	Qty.	UL508	cUL
HB01025	Cover section. Use only with HB01026.	700	1	•	•
HB01026	Mount for cover section HB01025	—	2	•	•

SYSTEM COVER, 3-POLE

COVER CAP, 3-POLE

COMPARTMENT SECTION

CRITO® PROFILINER CONNECTION MODULE


The combination of these components provides touchsafe protection over connection sets and terminals that mount on the face of the busbar system. System cover provides space underneath to accommodate these mounted components. Components need to be cut to appropriate length.

BULLETIN: HB2

Catalog Number	Description	Length (mm)	Qty.	UL508	cUL
HB01554	Front cover section, 3-pole. Use only with HB01136	1100	1	•	•
HB01555	Top/bottom cover section. Use only with HB01136 or HB01137	1100	1	•	•
HB01136	Set of holders (left and right) for covers sections, 3P	---	1		

Can also be used as reserve section cover. Use to cover most connection sets.

BULLETIN: HB2

Catalog Number	Description	H x W (mm)	Qty.	UL508	cUL
HB01539	For 12 - 30 x 5/10, Double-T and Triple-T busbar sections	180 x 200 x 90	1	•	•
HB01596	For 30 x 5/10, Double-T and Triple-T busbar sections	228 x 200 x 90	1	•	•
HB01540	For 12 30 x 5/10, Double-T and Triple-T busbar sections	250 x 200 x 90	1	•	•
HB01756	For 12-30x5/10, Double-T and Triple-T busbar sections	135 x 200 x 90	1	•	
HB01757	For 12-30x5/10, Double-T and Triple-T busbar sections	135 x 200 x 90	1	•	

Provides additional depth to system covers and reserve section covers that are mounted on Double-T and Triple-T profile busbars. Sold in 1200-mm sections, they can be cut to length and mounted to the support structure. Provide additional touchsafe protection and prevent personnel from reaching behind the 3-pole covers where they might come in contact with a live component.

BULLETIN: HB2

Catalog Number	Description	Length (m)	Depth (mm)	Qty.
HB0123612	For adjusting installation depth in Double-T and Triple-T busbar sections	1.2	48	2
HB0123712	For adjusting installation depth in Double-T and Triple-T busbar sections	1.2	76	2

At 20-mm wide, this cage-clamp device is the narrowest connection method available. Use to feed or draw up to 48 A (UL) or 80 A (IEC) of power.

CRITO ProfiLiner is a trademark of Wöhner GmbH & Co. KG.

BULLETIN: HB2

Catalog Number	Description	W x H (mm)	UL Current Capacity (max.)	IEC Current Capacity (max.)	Qty.	UL508	cUL
HB01563	AWG 16-4	20 x 200	48 A	80 A	1	•	•

CONNECTING TERMINAL PLATE

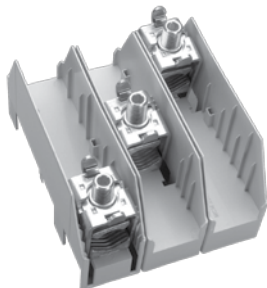


Use to connect round conductors or flat flexible conductors to the busbar system and to feed or draw power to, from or between lengths of busbar. Each terminal plate comes with a cover cap providing finger-safe protection.

BULLETIN: HB2

Catalog Number	Description	W x H (mm)	Current Capacity (max.)	Qty.	UL508	cUL
HB01240	AWG 10 – 1/0, s(r), f, f+AE, la. Cu 6 x 9 x 0.8	54 x 200	300 A	1	•	•
HB01243	AWG 2 – 250MCM, s(r), f, f+AE, la. Cu 6 / 10 x 15.5 x 0.8	81 x 200	440 A	1	•	•

CONNECTION SET, 3-POLE



Modular design allows phase connections to be spread out along the busbar structure. Each phase conductor can be run parallel from the upstream or downstream device. These connection sets do not come with a cover cap – use Cover Cap or System Cover to gain finger-safe protection.

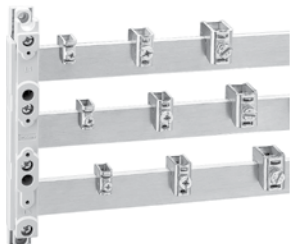
BULLETIN: HB2

Catalog Number	Description	Current Capacity (max.)	Qty.	UL508	cUL
HB01537	CU and Al ^a AWG 4/0 - 600MCM, s(r), s(s), f	560 A	1	•	•
HB01538	Flat busbars up to 32 x 20 mm	800 A	1	•	•

^a Not maintenance-free when aluminum conductors are used.

Cover cap for HB01537 and HB01538 is HB01539 when the phase conductors are butted side-by-side (not spaced apart).

UNIVERSAL CONDUCTOR TERMINAL



Terminals for round American Wire Gauge (AWG) conductor are used to either supply power to or draw power from the busbar system. These parts must match the thickness of the busbar being applied in your system. Cover caps are sold separately. Sold in sets of three terminals.

BULLETIN: HB2

Catalog Number	Description	Connection AWG (min.-max.)	Terminal Space H x W	Current Capacity (max.)	Qty.	UL508	cUL
HB01284	5-mm flat busbars	16-6	7.5 x 7.5 (mm)	180 A	3	•	•
HB01285	5-mm flat busbars	12-2	10.5 x 11 (mm)	270 A	3	•	•
HB01287	5-mm flat busbars	6-2/0	14 x 14 (mm)	400 A	3	•	•
HB01068	5-mm flat busbars	6-250 MCM	17 x 15 (mm)	440 A	3	•	•
HB01289	10-mm flat busbars	16-6	7.5 x 7.5 (mm)	180 A	3	•	•
HB01290	10-mm flat busbars	12-2	10.5 x 11 (mm)	270 A	3	•	•
HB01292	10-mm Double-T and Triple-T busbar sections	6-2/0	14 x 14 (mm)	400 A	3	•	•
HB01203	10-mm Double-T and Triple-T busbar sections	6-250 MCM	17 x 15 (mm)	440 A	3	•	•

Meets UL508 when properly installed.

CRITO® PROFICLIP, BRACE TERMINALS



CRITO ProfiClip is a trademark of Wöhner GmbH & Co. KG.

BULLETIN: HB2

Catalog Number	Description	Current Capacity (max.)	Qty.	UL508	cUL
HB01319	For flat busbars up to 30 mm x 20 mm	750 A	3	•	•
HB01318	Cu and Al ^a AWG 3/0 - 350 MCM	500 A	3	•	•
HB01759	For flat busbars up to 32 mm x 20 mm	800 A	3	•	•
HB01760	Cu and Al ^a AWG 3/0 - 350 MCM 600 A	600 A	3	•	•

^a Not maintenance-free when aluminum conductors are used.

Meets UL508 when properly installed.

20 x 5 – 30 x 10. Double-T and Triple-T

PROFILE TERMINAL, FOR DOUBLE-T BUSBAR SECTIONS



Terminals for insulated flat flexible busbar used to either supply power to or draw power from the busbar system. Cover caps are sold separately. Sold in sets of three terminals.

BULLETIN: HB2

Catalog Number	Description	Connection Cross Section (sq. mm)	Terminal Space W x H (mm)	Current Capacity (max.)	Qty.	UL508	cUL
HB01185	For connecting flat busbars and flexible copper busbars	320-800	41 x 20 - 42	1600 A	3	•	•
HB01906	For connecting flat busbars and flexible copper busbars	500-750	51 x 5 - 28	1600 A	3	•	•
HB01907	For connecting flat busbars and flexible copper busbars	600-900	64 x 5 - 28	1600 A	3	•	•
HB01936	For connecting flat busbars and flexible copper busbars	500-1000	51 x 20 - 42	1600 A/2000 A	3	•	•
HB01911	For connecting flat busbars and flexible copper busbars	600-1200	64 x 20 - 42	1600 A/2000 A	3	•	•
HB01934	For connecting flat busbars and flexible copper busbars	800-1600	81 x 20 - 42	1600 A/2500 A	3	•	•
HB01935	For connecting flat busbars and flexible copper busbars	1000-2000	101 x 20 - 42	1600 A/2800 A	3	•	•

HB01936, HB01911, HB01934, HB01935: current capacity for center feeding

Meets UL508 when properly installed.

PROFILE TERMINAL, FOR TRIPLE-T BUSBAR SECTIONS



Terminals for insulated flat flexible busbar used to either supply power to or draw power from the busbar system. Cover caps are sold separately. Sold in sets of three terminals.

BULLETIN: HB2

Catalog Number	Description	Connection Cross Section (mm)	Terminal Space W x H (mm)	Current Capacity (max.)	Qty.	UL508	cUL
HB01513	For Triple-T busbar sections	320-860	41 x 23 - 45	1600 A	3	•	•
HB01008	For Triple-T busbar sections	500-1260	64 x 23 - 45	2500 A	3	•	•
HB01186	For Triple-T busbar sections	1200-3600	101 x 23 - 45	3200 A	3	•	•

Meets UL508A when properly installed.

BUSBAR CONNECTOR, FOR SAME-SIZE BUSBARS



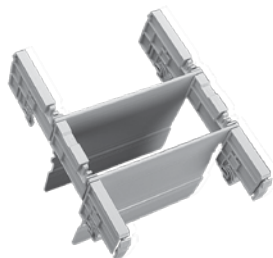
Use to extend busbar lengths or to install a shipping split in a modular enclosure assembly.

BULLETIN: HB2

Catalog Number	Description	Length (mm)	System Spacing (mm)	Current Capacity (max.)	Qty.	UL508 ^a	cUL
HB01166	12 - 20 X 5 / 10	55	5 - 10	630 A	3	—	—
HB01193	12 - 20 X 5 / 10	150	100 - 110	630 A	3	—	—
HB01990	20 - 30 X 5 / 10	40	9 - 20	630 A	3	—	—
HB01823	20 - 30 X 5 / 10	40	13 - 20	630 A	3	—	—
HB01141	20 - 30 X 5 / 10	95	50 - 60	630 A	3	—	—
HB01886	20 - 30 X 5 / 10	150	100 - 110	630 A	3	—	—
HB01827	Double-T Section	50	9 - 20	1600 A	3	—	—
HB01145	Double-T Section	95	50 - 60	1600 A	3	—	—
HB01829	Double-T Section	150	100 - 110	1600 A	3	—	—
HB01274	Triple-T Section	95	50 - 60	2500 A	3	—	—
HB01275	Triple-T Section	150	100 - 110	2500 A	3	—	—

^aMeets UL508 requirements when phase separators are installed.

PHASE SEPARATORS, FOR UL INSTALLATION OF END-TO-END BUSBAR CONNECTION, 3-POLE



Satisfy the through-air arcing distances of the UL508 standard when using end-to-end busbar connectors, for the same-size busbars.

BULLETIN: HB2

Catalog Number	Width mm/in.	For Use With	Qty.	UL508	cUL
HB01360	105	HB01166, HB01990, HB01823, HB01827	1	•	•
HB01361	145	HB01141, HB01145, HB01274	1	•	•
HB01362	200	HB01193, HB01886, HB01829, HB01275	1	•	•

MOTUS® CONTACTRONCONTROL, HYBRID MOTOR STARTER FOR 60MM SYSTEM CLASSIC



Woehner USA's hybrid motor starter, MOTUS® ContactronControl offers system designers space and labor savings by making up to 75% more space available on a busbar system compared to conventional starter combinations. It delivers versatile, reliable and long-lasting motor control with a product lifespan 10 times longer than conventional contactors.

MOTUS® ContactronControl is a trademark of Wöhner GmbH & Co. KG

BULLETIN: HB2

Catalog Number	Description	Width mm/in.	Rated Current/ Rated Voltage	Qty.	UL508
HB36102	Version 0.075 - 0.6A	22.5	0.6A/480V	1	•
HB36105	Version 0.18 - 2.4A	22.5	2.4A/480V	1	•
HB36108	Version 1.5 - 9.0A	22.5	9A/480V	1	•

EQUES® EASYCONNECTOR, BUSBAR ADAPTER



DIN rail adapters for components that have symmetrical DIN rail mounting provision. Additional DIN rails can be added to the adapter.

EQUES EasyConnector is a trademark of Wöhner GmbH & Co. KG.

BULLETIN: HB2

Catalog Number	Description	Adapter W x L (mm)	Current	Leads	Qty.	UL508	cUL
HB32432	2 mounting rails	90 x 200	25 A	12 AWG	1	•	•
HB32433	2 mounting rails	45 x 260	25 A	12 AWG	1	•	•
HB32436	2 mounting rails	45 x 200	25 A	10 AWG	1	•	•
HB32439	2 mounting rails	45 x 260	25 A	10 AWG	1	•	•
HB32441	1 mounting rail	54 x 200	32 A	10 AWG	1	•	•
HB32442	2 mounting rails	54 x 200	32 A	10 AWG	1	•	•
HB32443	1 mounting rail	63 x 200	32 A	10 AWG	1	•	•
HB32444	1 mounting rail	72 x 200	32 A	10 AWG	1	•	•
HB32446	2 mounting rails	81 x 200	32 A	10 AWG	1	•	•
HB32449	2 mounting rails	54 x 260	32 A	10 AWG	1	•	•
HB32454	1 mounting rail	54 x 200	63 A	8 AWG	1	•	•
HB32455	2 mounting rails	54 x 200	63 A	8 AWG	1	•	•
HB32456	1 mounting rail	63 x 200	63 A	8 AWG	1	•	•
HB32457	1 mounting rail	72 x 200	63 A	8 AWG	1	•	•
HB32459	2 mounting rails	81 x 200	63 A	8 AWG	1	•	•
HB32461	2 mounting rails	54 x 260	63 A	8 AWG	1	•	•
HB32466	1 mounting rail	54 x 200	80 A	6 AWG	1	•	•
HB32467	2 mounting rails	54 x 200	80 A	6 AWG	1	•	•
HB32469	1 mounting rail	72 x 200	80 A	6 AWG	1	•	•
HB32472	2 mounting rails	54 x 260	80 A	6 AWG	1	•	•

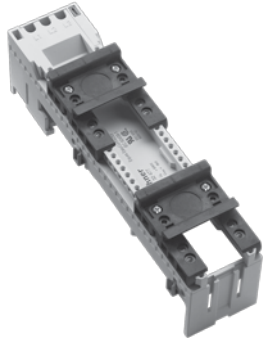
Catalog Number	Description	Adapter W x L (mm)	Current	Leads	Qty.	UL508	cUL
HB32430	1 mounting rail	45 x 200	25 A	12 AWG	1	•	•
HB32431	2 mounting rails	45 x 200	25 A	12 AWG	1	•	•

EARTH/NEUTRAL ADAPTER MODULE, WITH 6 AWG TERMINALS, TOP AND BOTTOM


Earth or neutral terminal connection for the busbar system.

BULLETIN: HB2

Catalog Number	Description	Adapter W x L (mm)	Qty.	UL508
HB32146	For EEC adapters, connectable on both sides	18 x 260	1	•

EQUES® EASYCONNECTOR EMPTY


DIN rail adapters for components that have a 35-mm symmetrical DIN rail mounting provision. Available in 45-mm or 54-mm widths and 200-mm or 260-mm heights with one or two DIN rails. Most commonly used to add width to a powered EQUES EasyConnector for reversing contactor applications or to mount other components that are wider than 81 mm. The side-mounted module adds width to any adapter in 9-mm increments and maintains the IP20 fingersafe design of the busbar system.

EQUES EasyConnector is a trademark of Wöhner GmbH & Co. KG.
BULLETIN: HB2

Catalog Number	Description	Adapter W x L (mm)	Qty.	UL508	cUL
HB32477	Universal	45 x 200	1	•	•
HB32478	Universal	54 x 200	1	•	•
HB32484	Universal	45 x 260	1	•	•
HB32485	Universal	54 x 260	1	•	•
HB32963	Side-mounted module, connectable on both sides	9 x 200	5	—	—

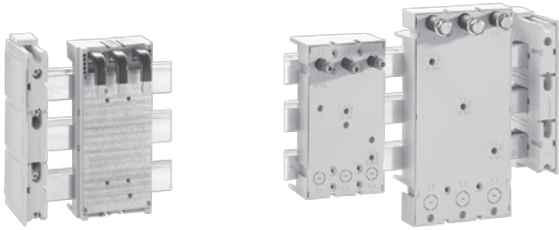
EQUES® TECHNOLOGY ACCESSORIES


Additional DIN mounting rails for EQUES EasyConnectors. Connecting elements are used to fasten adjacent EQUES EasyConnectors, 9-mm extenders and mounting rails.

EQUES EasyConnector is a trademark of Wöhner GmbH & Co. KG.
BULLETIN: HB2

Catalog Number	Description	Adapter Width (mm)	Qty.	UL508	cUL
HB32948	Mounting Rail	54	10	•	•
HB32949	Mounting Rail	63	10	•	•
HB32950	Mounting Rail	72	10	•	•
HB32951	Mounting Rail	81	10	•	•
HB32954	Connecting Element	45	50	•	•

EQUES® POWERCONNECTOR, BUSBAR ADAPTER



Adapters configured specifically for many of the industry’s leading molded-case circuit breakers. The hole pattern for the mounting screws, pitch and length of the terminal connections are specific to the breaker they are designed to mount.

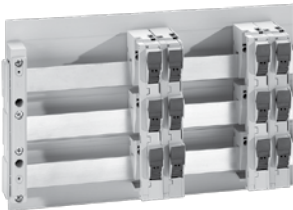
EQUES PowerConnector is a trademark of Wöhner GmbH & Co. KG.

BULLETIN: HB2

Catalog Number	Description	Adapter W x L	Terminal Pitch	Qty.	UL508	cUL
HB32571	125 A for Eaton Cutler-Hammer EG & H, bottom feed	90 x 200 mm	23-30 mm	1	•	•
HB32577	125 A for Eaton Cutler-Hammer E G & H	90 x 200 mm	23-30 mm	1	•	•

Catalog Number	Description	Adapter W x L	Terminal Pitch	Qty.	UL508	cUL
HB32575	160 A for ABB T-max 1, T-max 2, GE FD160, Merlin Gerin NS80	90 x 200 mm	23-30 mm	1	•	•
HB32549	125 A for Allen-Bradley 140-CMN	90 x 200 mm	23-30 mm	1	•	•
HB32570	160 A for Moeller NZM1	90 x 200 mm	23-30 mm	1	•	•
HB32137	250 A for Allen-Bradley 140 U-J	106 x 192 mm	35-36 mm	1	•	•
HB32156	250 A for Merlin Gerin NS100, NS250, GE FD250	106 x 192 mm	35-36 mm	1	•	•
HB32140	250 A for Moeller NZM2-XKR4	106 x 192 mm	35-36 mm	1	•	•
HB32976	160 A for Siemens 3VL1 UL	106 x 192 mm	35-36 mm	1	•	•
HB32977	250 A for Siemens 3VL2, 3VL3 UL	106 x 192 mm	35-36 mm	1	•	•
HB32138	600 A for Allen-Bradley 140 U-L	140 x 272 mm	43-45 mm	1	•	•
HB32157	570 A for Merlin Gerin NS400, NS630	140 x 272 mm	43-45 mm	1	•	•
HB32170	550 A for Moeller NZM3-XKR130	140 x 272 mm	43-45 mm	1	•	•
HB32975	400 A for Siemens 3VL4	140 x 295 mm	43-45 mm	1	•	•

AMBUS® EASYLINER, BUS-MOUNTING FUSE HOLDER, 3-POLE, 3-POLE ISOLATION



Busbar-mounted 3-pole fuse holder for UL recognized midget (10 x 38 mm) and UL Listed Class CC fuses. Holders are offered with or without open fuse indication. In indication units, the LED indicator lamp will glow when the fuse is open. At 27 mm wide, the AMBUS EasyLine is half the width of traditional 3-phase holders of the same class. Indicator units operate at voltages between 110 and 690 V.

AMBUS EasyLiner is a trademark of Wöhner GmbH & Co. KG.

BULLETIN: HB2

Catalog Number	Description	Rated Current/ Rated Voltage	Qty.	UL4248	cUL
HB31954	For 10 x 38 mm cylindrical fuses IEC-EN 60 269-2-1	32 A / 690 V	1	•	•
HB31955	For 10 x 38 mm cylindrical fuses IEC-EN 60 269-2-1, with LED	32 A / 690 V	1	•	•
HB31958	For Class CC, cylindrical fuses UL 248-4	30 A / 600 V	1	•	•
HB31959	For Class CC, cylindrical fuses UL 248-4, with LED	30 A / 600 V	1	•	•

QUADRON® CROSSLINK CARRIER CLASS J, CONNECTION BOTTOM OR TOP



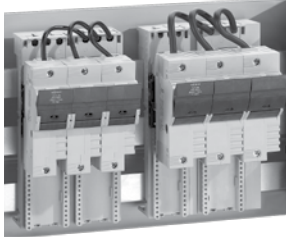
The QUADRON® CrossLink Carrier Class J fuse holder allows 30, 60, 100 and 200 amp 3-phase fuse holders to be mounted directly to the 60mm classic busbar structure. The cover design provides

touch-safety and allows for quick fuse change-out with its integral puller. Easily reversible connection on bottom, top or 3-pole busbar sections.

QUADRON® CrossLink Carrier is a trademark of Wöhner GmbH & Co. KG

BULLETIN: HB2

Catalog Number	Description	Width mm/in.	Rated Current/ Rated Voltage	Qty.	UL508	cUL
HB33421	For Class J, 30A frame size	106	30A/600V	1	•	•
HB33422	For Class J, 60A frame size	106	60A/600V	1	•	•
HB33402	For Class J, 100A frame size	106	100A/600V	1	•	•
HB33403	For Class J, 200A frame size	106	200A/600V	1	•	•

QUADRON® J-CARRIER


Busbar mounted 3-pole fuse holder for UL Listed Class J 30 and 60 A ferrule size fuses. Holders are offered with or without open fuse indication. In indication units, the LED indicator lamp will glow when the fuse is open. Indicator units operate at voltages between 110 and 600 V. Complete solution on busbar adaptor, 3-pole for all busbars. *QUADRON J-Carrier is a trademark of Wöhner GmbH & Co. KG.*

BULLETIN: HB2

Catalog Number	Description (mm)	Width (mm)	Rated Current/ Rated Voltage	Qty.	UL508	cUL
HB31968	Class J, 21 x 57, with LED	108	30 A / 600 V	1	•	•
HB31970	Class J, 27 x 60, with LED	126	60 A / 600 V	1	•	•

QUADRON® J-CARRIER, CONNECTION BOTTOM OR TOP


Blade size Class J bus-mounting fuse holders in 100 A, 200 A and 400 A frame sizes. Connection on bottom or top, 3-pole, 30 x 10, Double-T and Triple-T busbar sections.

QUADRON J-Carrier is a trademark of Wöhner GmbH & Co. KG.

BULLETIN: HB2

Catalog Number	Description (mm)	Width (mm)	Rated Current/ Rated Voltage	Qty.	UL4248	cUL
HB33309	Class J, 29 x 117	184	100 A / 600 V	1	•	•
HB33310	Class J, 41 x 146	210	200 A / 600 V	1	•	•
HB33311	Class J, 54 x 181	256	400 A / 600 V	1	•	•

BUSBAR SUPPORT AND BASE PLATE



BULLETTIN: HB2

Catalog Number	Description	Width x Height mm	Qty.	UL508	cUL
HB01272	Compact Busbar Support	12.5 x 156	1	•	•
HB01371	Compact Base Plate	160 x 700	1	•	•

STANDARD COPPER BUSBAR



BULLETTIN: HB1

Catalog Number	Description	Dims mm/in.	Current Rating	Qty ^a	UL508	cUL
HB01618	Tin plated, Cu Busbar, 2.4m	12x5	150A	1	•	•
HB0161812	Tin plated, Cu Busbar, 1.2m	12x5	150A	1	•	•
HB01623	Tin plated, Cu Busbar, 2.4m	12x10	300A	1	•	•
HB0162312	Tin plated, Cu Busbar, 1.2m	12x10	300A	1	•	•

^aTo order models in qty. 1 use catalog number with HBB prefix (i.e. HBB0161812, HBB01623)

RESERVE SECTION COVER, 3-POLE



BULLETTIN: HB2

Catalog Number	Description	Width x Height mm/in.	Qty.	UL508	cUL
HB01314	Cover Section	700 x 160	1	•	•
HB01317	Mount for Cover Section	5 x 156	2	•	•

CONNECTING TERMINAL PLATE



BULLETTIN: HB2

Catalog Number	Description	Width x Height mm/in.	Rated Current/ Rated Voltage	Qty.	UL508	cUL
HB01401	Compact Connection Set	54 x 160	300A/600V	1	•	•
HB01165	Compact Connection Set	90 x 160	480A/600V	1	•	•

EQUES EASYCONNECTORS, SYSTEM COMPACT



BULLETTIN: HB2

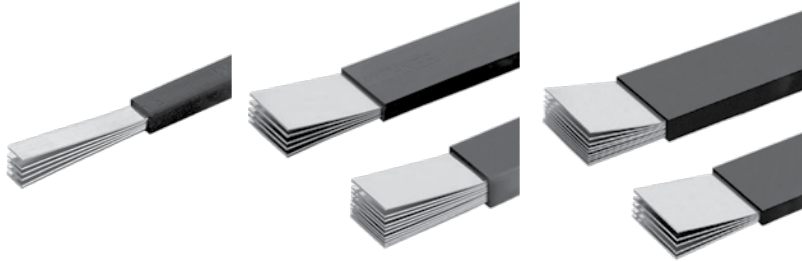
Catalog Number	Description	Width x Height mm/in.	Rated Current/ Rated Voltage	Qty	UL508	cUL
HB32590	32A, 1 mounting rail	45x160	32A/60V	1	•	•
HB32591	63A, 1 mounting rail	54x160	63A/600V	1	•	•
HB32912	9mm side-mount module	9x160	---	5	•	•

MOTUS CONTACTRONCONTROL, HYBRID MOTOR STARTER FOR 60MM SYSTEM COMPACT



BULLETTIN: HB2

Catalog Number	Description	Width mm/in.	Rated Current/ Rated Voltage	Qty	UL508
HB36101	Version 0.075 - 0.6a	22.5	0.6A/480V	1	•
HB36104	Version 0.18 - 2.4A	22.5	2.4A/480V	1	•
HB36107	Version 1.5 - 9.0A	22.5	9A/480V	1	•

FLEXIBLE BUSBARS, CU TINNED, INSULATED

APPLICATION

Flat, flexible busbar complements the space-saving nature of the 60-mm busbar system. Unlike traditional round conductors, flexible busbar can be folded and shaped without regard to AWG bending

radius issues. Choose connection sets that are designed to accept flexible busbar, or drill the flex for use with a stud connection (on your breaker, VFD, SCR or other system component.)

BULLETIN: HB1

Standard Product 3-M Long

Catalog Number	Description (mm)	Rated Current at 75 C	Cross Section (sq. mm)	Qty.
HB01083100	3 x 9 x 0.8	141 A	21.6	1
HB01084100	6 x 9 x 0.8	210 A	43.2	1
HB01146100	6 x 13 x 0.5	207 A	39	1
HB01089100	4 x 15.5 x 0.8	244 A	49.6	1
HB01090100	6 x 15.5 x 0.8	306 A	74.4	1
HB01091100	10 x 15.5 x 0.8	411 A	124	1
HB01446100	2 x 20 x 1	230 A	40	1
HB01062100	3 x 20 x 1	286 A	60	1
HB01447100	4 x 20 x 1	334 A	80	1
HB01448100	5 x 20 x 1	377 A	100	1
HB01063100	6 x 20 x 1	418 A	120	1
HB01449100	8 x 20 x 1	492 A	160	1
HB01064100	10 x 20 x 1	560 A	200	1
HB01450100	2 x 24 x 1	265 A	48	1
HB01451100	3 x 24 x 1	329 A	72	1
HB01452100	4 x 24 x 1	383 A	96	1
HB01075100	5 x 24 x 1	433 A	120	1
HB01453100	6 x 24 x 1	479 A	144	1
HB01076100	10 x 24 x 1	637 A	240	1
HB01454100	2 x 32 x 1	334 A	64	1
HB01455100	3 x 32 x 1	413 A	96	1
HB01456100	4 x 32 x 1	480 A	128	1
HB01095100	5 x 32 x 1	540 A	160	1
HB01457100	6 x 32 x 1	596 A	192	1
HB01458100	8 x 32 x 1	695 A	256	1
HB01096100	10 x 32 x 1	783 A	320	1
HB01459100	3 x 40 x 1	494 A	120	1
HB01460100	4 x 40 x 1	574 A	160	1
HB01097100	5 x 40 x 1	644 A	200	1
HB01461100	6 x 40 x 1	708 A	240	1
HB01462100	8 x 40 x 1	822 A	320	1
HB01099100	10 x 40 x 1	922 A	400	1
HB01463100	3 x 50 x 1	594 A	150	1
HB01464100	4 x 50 x 1	688 A	200	1
HB01112100	5 x 50 x 1	770 A	250	1
HB01465100	6 x 50 x 1	844 A	300	1
HB01466100	8 x 50 x 1	975 A	400	1
HB01113100	10 x 50 x 1	1089 A	500	1
HB01467100	4 x 63 x 1	832 A	252	1
HB01468100	5 x 63 x 1	929 A	315	1
HB01469100	6 x 63 x 1	1015 A	378	1
HB01123100	10 63 x 1	1296 A	630	1
HB01470100	4 x 80 x 1	1014 A	320	1
HB01471100	5 x 80 x 1	1128 A	400	1
HB01472100	6 x 80 x 1	1229 A	480	1
HB01473100	10 x 80 x 1	1556 A	800	1
HB01474100	4 x 100 x 1	1220 A	400	1
HB01475100	5 x 100 x 1	1354 A	500	1
HB01476100	60 x 100 x 1	1471 A	600	1
HB01477100	8 x 100 x 1	1674 A	800	1
HB01478100	10 x 100 x 1	1848 A	1000	1

Standard Product **2 - M Long**

Catalog Number	Description (mm)	Rated Current at 75 C	Cross Section (sq. mm)	Qty.
HB01084	6 x 9 x 0.8	210 A	43.2	1
HB01146	6 x 13 x 0.5	207 A	39.0	1
HB01089	4 x 15.5 x 0.8	244 A	49.6	1
HB01090	6 x 15.5 x 0.8	306 A	74.4	1
HB01091	10 x 15.5 x 0.8	411 A	124	1
HB01062	3 x 20 x 1	286 A	60	1
HB01063	6 x 20 x 1	418 A	120	1
HB01064	10 x 20 x 1	560 A	200	1
HB01075	5 x 24 x 1	433 A	120	1
HB01076	10 x 24 x 1	637 A	240	1
HB01095	5 x 32 x 1	540 A	160	1
HB01096	10 x 32 x 1	783 A	320	1
HB01099	10 x 40 x 1	922 A	400	1
HB01112	5 x 50 x 1	770 A	250	1
HB01113	10 x 50 x 1	1089 A	500	1

HOLDERS, FOR LAMINATED BUSBARS (UP TO 10-MM LAMINATION PACKS)



Holders fasten to 35-mm symmetrical DIN rail. A set of 4 can be used to hold 3 lengths of flexible busbars in a typical application.

BULLETIN: HB2

Catalog Number	Description	Qty.	UL508	cUL
HB01303	Holder	4	—	—

AMBUS® J-CARRIER, CLASS J FUSE HOLDER, CLIP-ON MOUNTING, STANDARD MODEL


DIN Rail mountable fuse holders for 30 and 60 A ferrule size UL Class J fuses. Offered in single pole, 2-pole or 3-pole configurations. Holders meet IP20 touchsafe design standards. *AMBUS J-Carrier is a trademark of Wöhner GmbH & Co. KG.*

BULLETIN: HB2

Catalog Number	Description (mm)	Type	Rated Current/Rated Voltage	Connection	Width (mm)	Qty.	UL4248	CSA
HB31284	21 x 57	1-pole	30 A/600 VAC	0.75 - 50 sq. mm AWG 18-1	36	6	•	•
HBF31284	21 x 57	1-pole	30 A/600 VAC/30 A/600 VAC	0.75 - 50 sq. mm AWG 18-1	36	1	•	•
HB31285	21 x 57	2-pole	30 A/600 VAC	0.75 - 50 sq. mm AWG 18-1	72	3	•	•
HBF31285	21 x 57	2-pole	30 A/600 VAC	0.75 - 50 sq. mm AWG 18-1	72	1	•	•
HB31287	21 x 57	3-pole	30 A/600 VAC	0.75 - 50 sq. mm AWG 18-1	108	2	—	•
HBF31287	21 x 57	3-pole	30 A/600 VAC	0.75 - 50 sq. mm AWG 18-1	108	1	—	•
HB31920	27 x 60	1-pole	60 A/600 VAC	2.5 - 50 sq. mm AWG 14-1	40	6	—	•
HBF31920	27 x 60	1-pole	60 A/600 VAC	2.5 - 50 sq. mm AWG 14-1	40	1	—	•
HB31921	27 x 60	2-pole	60 A/600 VAC	2.5 - 50 sq. mm AWG 14-1	80	3	—	•
HBF31921	27 x 60	2-pole	60 A/600 VAC	2.5 - 50 sq. mm AWG 14-1	80	1	—	•
HB31922	27 x 60	3-pole	60 A/600 VAC	2.5 - 50 sq. mm AWG 14-1	120	2	—	•
HBF31922	27 x 60	3-pole	60 A/600 VAC	2.5 - 50 sq. mm AWG 14-1	120	1	—	•

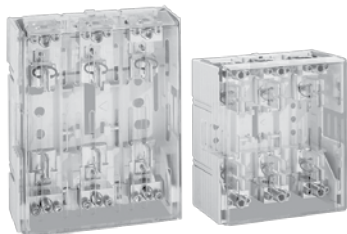
AMBUS® J-CARRIER, CLASS J FUSE HOLDER, CLIP-ON MOUNTING, MODEL WITH LIGHT INDICATOR 110-600 VAC/DC


DIN Rail mountable fuse holders for 30 and 60 A ferrule size UL Class J fuses. Offered in single pole, 2-pole or 3-pole configurations with LED open fuse indication. Indicator operates on systems between 110 and 600 V. The LED lamp will glow when the fuse is open (blown). Holders meet IP20 touchsafe design standards. *AMBUS J-Carrier is a trademark of Wöhner GmbH & Co. KG.*

BULLETIN: HB2

Catalog Number	Description (mm)	Type	Rated Current/Rated Voltage	Connection	Width (mm)	Qty.	UL4248	CSA
HB31932	21 x 57	1-pole	30 A/600 VAC	0.75 - 50 sq. mm AWG	36	6	•	•
HBF31932	21 x 57	1-pole	30 A/600 VAC	0.75 - 50 sq. mm AWG	36	1	•	•
HB31933	21 x 57	2-pole	30 A/600 VAC	0.75 - 50 sq. mm AWG	72	3	•	•
HBF31933	21 x 57	2-pole	30 A/600 VAC	0.75 - 50 sq. mm AWG	72	1	•	•
HB31934	21 x 57	3-pole	30 A/600 VAC	0.75 - 50 sq. mm AWG	108	2	•	•
HBF31934	21 x 57	3-pole	30 A/600 VAC	0.75 - 50 sq. mm AWG	108	1	•	•
HB31923	27 x 60	1-pole	60 A/600 VAC	2.5 - 50 sq. mm AWG	40	6	•	•
HBF31923	27 x 60	1-pole	60 A/600 VAC	2.5 - 50 sq. mm AWG	40	1	•	•
HB31924	27 x 60	2-pole	60 A/600 VAC	2.5 - 50 sq. mm AWG	80	3	•	•
HBF31924	27 x 60	2-pole	60 A/600 VAC	2.5 - 50 sq. mm AWG	80	1	•	•
HB31925	27 x 60	3-pole	60 A/600 VAC	2.5 - 50 sq. mm AWG	120	2	•	•
HBF31925	27 x 60	3-pole	60 A/600 VAC	2.5 - 50 sq. mm AWG	120	1	•	•

QUADRON® J-CARRIER, CLASS J FUSE HOLDER, SCREW-ON



UL Class J 100 A, 200 A and 400 A panel-mount fuse holders. Clear plastic cover satisfies IP20 touchsafe design standards. The only 3-pole blade size Class J fuse holder in the industry with integral touchsafe cover.

QUADRON J-Carrier is a trademark of Wöhner GmbH & Co. KG.

BULLETIN: HB2

Catalog Number	Description (mm)	Type	Rated Current/Rated Voltage	Connection	Width (mm)	Qty.	UL4248	CSA
HB33306	29 x 117	3-pole	100 A/600 VAC	6.0 - 70 sq. mm AWG 10-2/0	184	1	•	•
HB33307	41 x 146	3-pole	200 A/600 VAC	10 - 150 sq. mm AWG 8-300 MCM	210	1	•	•
HB33308	54 x 181	3-pole	200 A/600 VAC	16 - 300 sq. mm AWG 4-600 MCM	256	1	•	•

AMBUS® EASYSWITCH



DIN Rail mountable fuse holders for UL recognized Midget (10 x 38 mm) dimension cylindrical fuses. Offered in single pole, 2-pole or 3-pole configurations with or without LED open fuse indication. Indicator operates on systems between 110 and 690 V. The LED lamp will glow when the fuse is open (blown). Holders meet IP20 touchsafe design standards.

AMBUS EasySwitch is a trademark of Wöhner GmbH & Co. KG.

BULLETIN: HB2

Catalog Number	Description (mm)	Type	Rated Current/Rated Voltage	Connection	Width (mm)	Qty.	UL4248	CSA
HB31110	10 x 38	1-pole	32 A/690 VAC, 440 VDC	0.75 - 25 sq. mm AWG 18-4	18	12	•	•
HB31971	10 x 38	1-pole	1000 VDC	0.75 - 25 sq. mm AWG 18-4	18	10	—	—
HB31112	10 x 38	2-pole	32 A/690 VAC, 440 VDC	0.75 - 25 sq. mm AWG 18-4	36	6	•	•
HB31113	10 x 38	3-pole	32 A/690 VAC, 440 VDC	0.75 - 25 sq. mm AWG 18-4	54	4	•	•
HB31130	10 x 38 w/LED	1-pole	32 A/690 VAC, 440 VDC	0.75 - 25 sq. mm AWG 18-4	18	12	•	•
HB31132	10 x 38 w/LED	2-pole	32 A/690 VAC, 440 VDC	0.75 - 25 sq. mm AWG 18-4	36	6	•	•
HB31133	10 x 38 w/LED	3-pole	32 A/690 VAC, 440 VDC	0.75 - 25 sq. mm AWG 18-4	54	4	•	•

AMBUS® EASYSWITCH CLASS CC



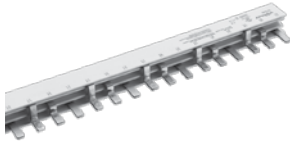
DIN Rail mountable fuse holders for UL Listed Class CC fuses. Offered in single pole, 2-pole or 3-pole configurations with LED open fuse indication. Indicator operates on systems between 110 and 600 V. The LED lamp will glow when the fuse is open (blown). Holders meet IP20 touchsafe design standards.

AMBUS EasySwitch is a trademark of Wöhner GmbH & Co. KG.

BULLETIN: HB2

Catalog Number	Description	Type	Rated Current/Rated Voltage	Connection	Width (mm)	Qty.	UL4248	CSA
HB31295	Standard Model	1-pole	30 A/600 VAC	0.75 - 25 sq. mm AWG 18-4	18	12	•	•
HB31296	Standard Model	2-pole	30 A/600 VAC	0.75 - 25 sq. mm AWG 18-4	36	6	•	•
HB31297	Standard Model	3-pole	30 A/600 VAC	0.75 - 25 sq. mm AWG 18-4	54	4	•	•
HB31298	Model with light indicator 110-600 VAC/DC	1-pole	30 A/600 VAC	0.75 - 25 sq. mm AWG 18-4	18	12	•	•
HB31299	Model with light indicator 110-600 VAC/DC	2-pole	30 A/600 VAC	0.75 - 25 sq. mm AWG 18-4	36	6	•	•
HB31300	Model with light indicator 110-600 VAC/DC	3-pole	30 A/600 VAC	0.75 - 25 sq. mm AWG 18-4	54	4	•	•
HB31929	Model with LED 12-72 VAC/DC	1-pole	30 A/600 VAC	0.75 - 25 sq. mm AWG 18-4	18	12	•	•

ACCESSORIES FOR AMBUS® EASYSWITCH, CONNECTION BOTTOM OR TOP



Comb-type busbar is an alternative to point-to-point wiring on the primary side of the 10x38 and Class CC fuse holders that have an 18mm pitch. It eliminates the need for a power distribution block and wiring duct to contain the AWG wires feeding multiple fuse blocks. Available for both 1-pole and 3-phase configurations. *AMBUS® EasySwitch is a trademark of Wöhner GmbH & Co. KG*

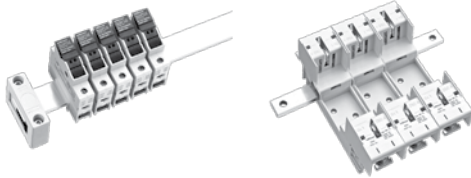
BULLETIN: HB2

Catalog Number	Description	Length (m)	Rated Current/ Rated Voltage	Qty.	UL508	CSA
HB31548	1-pole, insulated, 18mm pitch	1	100A ³ /1000V	1	•	•
HB31549	3-pole, insulated, 18mm pitch	1	100A ³ /600V	1	•	•

³ 100 ampere rated if connected from one end, 200 ampere rated if connected in the center.

Catalog Number	Description	Rated Current/ Rated Voltage	Qty.	UL508	cUL
HB31550	Connection terminal, AWG 10 - 1/0	11A/1000V	1	•	•
HB31552	3-pole, end-insulator	---	2	•	•

PV FUSE HOLDERS, BUSBAR COMBINED DC CURRENT



Fuse holders for mounting circuit protection devices for the wires and cables associated with photovoltaic installations. These devices allow the combining of current on metric dimension busbars. The design eliminates the bending radius space associated with large cables.

BULLETIN: HB2

Catalog Number	Width mm/in.	For Use With	Qty.	UL4248
HBF31570	22.5	30A, 1000Vdc, 10x38 PV fuses, 30x5 or 30x10 bar	1	•
HB31570	22.5	30A, 1000Vdc, 10x38 PV fuses, 30x5 or 30x10 bar	12	•
HB03289	60	200A, 1500Vdc, NH1XL PV fuses, 2x 30x10 bar	1	• ^a
HB03293	83	400A, 1500Vd, NH2XL/NH3L PV fuses, 2x 40x10 bar	1	• ^a

^aUL4248-18 pending.

Notes