

96 Watt - LP96W Series

CONSTANT VOLTAGE OR CONSTANT CURRENT LED DRIVER WITH DIMMING



DIMMING
LP96W Series
96W

Model: LP96W Series

- Drive Mode: Constant Current or Constant Voltage
- Technology: PFC Corrected 2-Stage Switch Mode
- Output Power: 96W Max.
- Input Voltage: 90 to 305VAC, 47- 63Hz
- Number of Outputs: One
- Output Voltages: 6VDC - 274VDC
- Output Currents: 350mA - 5350mA
- Optional 0-10V or PWM Positive Dimming 10% ~ 100%

Environmental

1. Operating temperature: Tc 90C Maximum. Reference -30 to +65°C ambient
2. Storage temperature range: -40 to +85°C
3. Humidity (non-condensing): 5% - 95%RH
4. Cooling: Convection
5. Vibration Frequency: 5-55Hz/2g, 30 minutes
6. Impact resistance: 1g/s
7. MTBF@ 40°C: 474,000 hours @ Full Load per MIL-217F Notice 2.

Safety and Compliance

1. UL8750, EN61347, CSA 22.2 safety compliant
2. FCC, 47CFR Part 15 Class B compliant
3. Water resistant and Dust Proof Design: IP66, NEMA6, for Dry, Damp, Wet Locations.
4. Compact Miniature, Lightweight Design.
5. Safety Isolation between Primary and Secondary
6. Meets EN61000-3-2 & EN61000-3-3 Class C
7. Protection: output over-voltage, output over-current, output short circuit, auto-recovery.
8. EN61000-4-5: 2kV/4kV 8/20 µsec surge protection.

Electrical Specifications at 25°C

- Input voltage range: 90 to 305VAC
- Frequency: 47- 63HZ
- Power Factor: ≥ 0.90 at $\geq 60\%$ Load, 120Vac/230Vac/277Vac 50/60Hz
- THD%: $\leq 20\%$ at $\geq 60\%$ Load, 120Vac/230Vac/277Vac 50/60Hz
- Inrush current: $<50A$ at 25C, 277V, cold start, Max. Load
- Input current: 1.3A Maximum
- Efficiency: 88% typical at 230Vac Full Load
- Line regulation accuracy: $\pm 3\%$
- Load regulation accuracy: $\pm 4\%$
- Leakage current: 400uA typical; Hold up time: half cycle

Constant Current Versions



IP66



Part Number ⁽²⁾	US Class 2	CN Class 2	Output Voltage Range	Output Constant Current	Current Accuracy	Output Power Maximum	Typical Efficiency ⁽¹⁾
LP96W-274-C0350	NO	NO	92 - 274 VDC	350 mA	$\pm 3\%$	96W	92%
LP96W-213-C0450	NO	NO	71 - 213 VDC	450 mA	$\pm 3\%$	96W	92%
LP96W-137-C0700	NO	NO	46 - 137 VDC	700 mA	$\pm 3\%$	96W	92%
LP96W-92-C1050	NO	NO	31 - 92 VDC	1050 mA	$\pm 3\%$	96W	91%
LP96W-69-C1400	NO	NO	23 - 69 VDC	1400 mA	$\pm 3\%$	96W	91%
LP96W-54-C1750	YES	NO	18 - 54 VDC	1750 mA	$\pm 3\%$	96W	91%
LP96W-48-C2000	YES	NO	16 - 48 VDC	2000 mA	$\pm 3\%$	96W	90%
LP96W-46-C2100	YES	NO	16 - 46 VDC	2100 mA	$\pm 3\%$	96W	90%
LP96W-39-C2450	YES	YES	14 - 39 VDC	2450 mA	$\pm 3\%$	96W	89%
LP96W-36-C2660	YES	YES	12 - 36 VDC	2660 mA	$\pm 3\%$	96W	89%
LP96W-34-C2800	YES	YES	12 - 34 VDC	2800 mA	$\pm 3\%$	96W	89%
LP96W-30-C3150	YES	YES	10 - 30 VDC	3150 mA	$\pm 3\%$	96W	89%
LP96W-27-C3500	YES	YES	9 - 27 VDC	3500 mA	$\pm 3\%$	96W	88%
LP96W-25-C3840	YES	YES	9 - 25 VDC	3840 mA	$\pm 3\%$	96W	88%
LP96W-24-C4000	YES	YES	8 - 24 VDC	4000 mA	$\pm 3\%$	96W	88%
LP96W-20-C4800	YES	YES	7 - 20 VDC	4800 mA	$\pm 3\%$	96W	87%
LP96W-18-C5350	NO	NO	6 - 18 VDC	5350 mA	$\pm 3\%$	96W	86%

Notes

1. Typical efficiency measured at 230VAC input, full load
2. For dimmable versions add appropriate designator to the end of the part number: For Example: LP96W-24-C4000-RD is 0-10V or resistance dimmable version, LP96W-24-C4000-PD is PWM dimmable version.
-RD 0-10V & Resistance dimmable version comes with an extra two wires +Purple/-Grey on the output side.
-PD PWM Dimmable version comes with an extra two wires +Purple/-Grey on the output side.
3. -RD 0-10V Dimming is compatible with most quality 0-10V wall dimmers and direct 0-10V analog signal. See page 3 for details.
4. -PD PWM version is PWM Dimmable via a positive 10% to 100% Duty Cycle, 500Hz to 1.5kHz, 0-10V Pulse. See page 4 for details.

96W**LP96W Series****DIMMING****LED Optimized Drivers**

96 Watt - LP96W Series

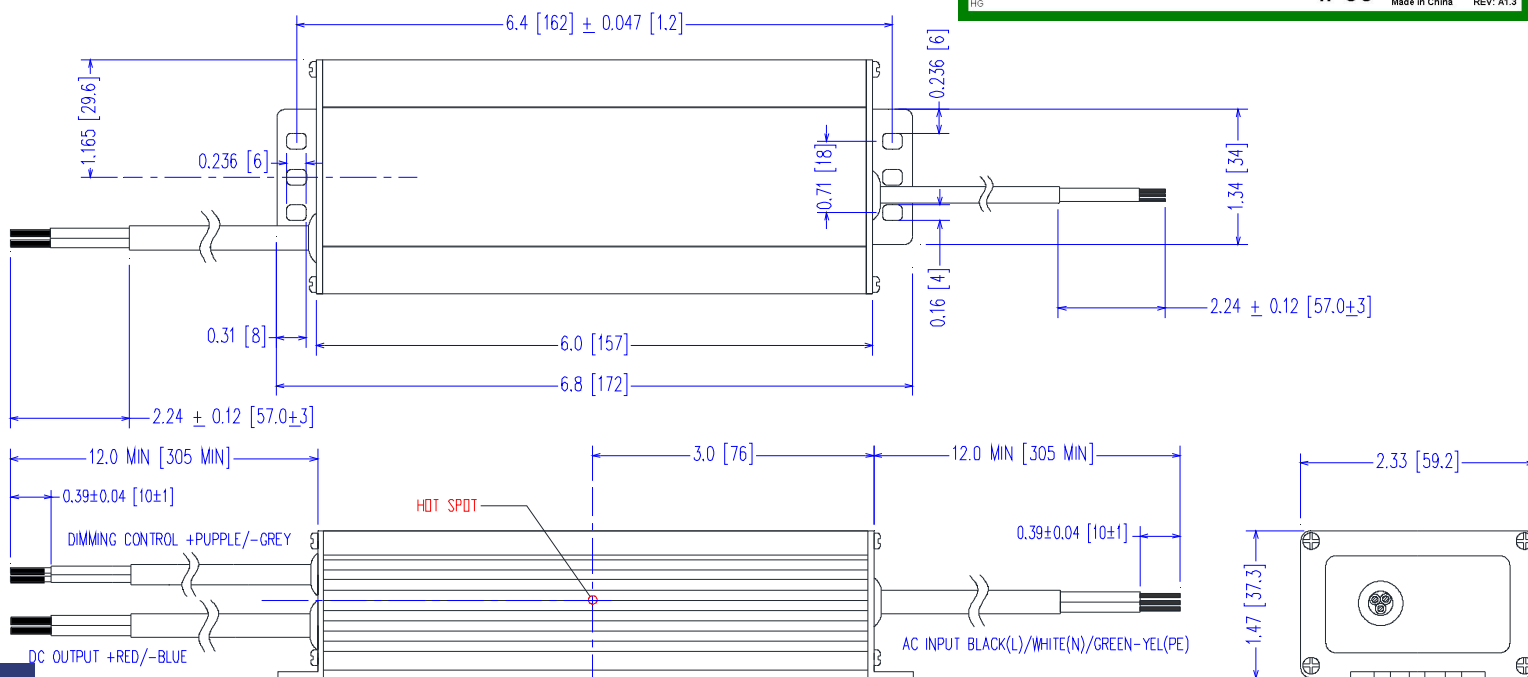
CONSTANT VOLTAGE OR CONSTANT CURRENT LED DRIVER WITH DIMMING

Constant Voltage Versions

Part Number	US Class 2	CN Class 2	Output Constant Voltage	Output Current Range	Voltage Accuracy	Output Power Maximum	Typical Efficiency ⁽¹⁾
LP96W-274	NO	NO	274 VDC	88 - 350 mA	± 5%	96W	92%
LP96W-213	NO	NO	213 VDC	113 - 450 mA	± 5%	96W	92%
LP96W-137	NO	NO	137 VDC	175 - 700 mA	± 5%	96W	92%
LP96W-92	NO	NO	92 VDC	263 - 1050 mA	± 5%	96W	91%
LP96W-69	NO	NO	69 VDC	350 - 1400 mA	± 5%	96W	91%
LP96W-54	YES	NO	54 VDC	438 - 1750 mA	± 5%	96W	91%
LP96W-48	YES	NO	48 VDC	500 - 2000 mA	± 5%	96W	90%
LP96W-46	YES	NO	46 VDC	525 - 2100 mA	± 3%	96W	90%
LP96W-39	YES	YES	39 VDC	613 - 2450 mA	± 5%	96W	89%
LP96W-36	YES	YES	36 VDC	665 - 2660 mA	± 5%	96W	89%
LP96W-34	YES	YES	34 VDC	700 - 2800 mA	± 5%	96W	89%
LP96W-30	YES	YES	30 VDC	788 - 3150 mA	± 5%	96W	89%
LP96W-27	YES	YES	27 VDC	875 - 3500 mA	± 5%	96W	88%
LP96W-25	YES	YES	25 VDC	960 - 3840 mA	± 5%	96W	88%
LP96W-24	YES	YES	24 VDC	1000 - 4000 mA	± 5%	96W	88%
LP96W-20	YES	YES	20 VDC	1200 - 4800 mA	± 5%	96W	87%
LP96W-18	NO	NO	18 VDC	1338 - 5350 mA	± 5%	96W	86%

Mechanical Dimensions: Inches [mm]

Material: Black Aluminum Housing
Fully Encapsulated
Weight: 21.6 oz (612 grams) Typical

Labeling Example

96 Watt - LP96W Series

CONSTANT VOLTAGE OR CONSTANT CURRENT LED DRIVER WITH DIMMING

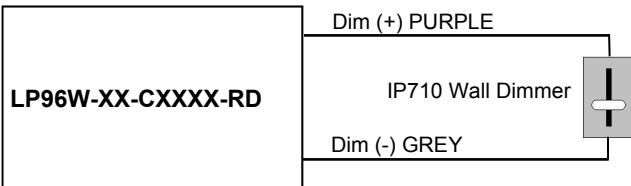
-RD 2-Wire 0-10V CCR Dimming Scheme

Parameters	Minimum	Typical	Maximum
Source Current out of 0-10V Purple Wire	0mA	—	2mA
Absolute Voltage Range on 0-10V (+) Purple Wire	-2.0V	—	+15V
Sink Current into 0-10V Purple Wire	0mA	—	1.2mA

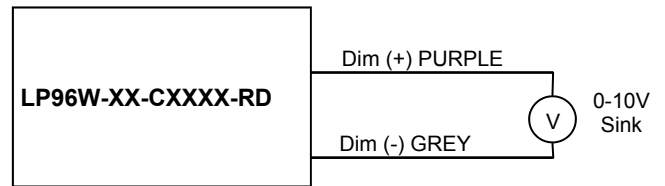
Notes

1. -RD 0-10V dimmable version comes with an extra two wires +Purple/-Grey on the output side.
2. -RD version is compatible with most 0-10V Wall Slide dimmers and direct 0-10V analog signal.
Recommended wall slide dimmer is Leviton IP710 or equivalent
3. -RD 0-10V dimmable version is not intended to dim below about 5% @ 0V or 10% @ 1.0V
4. -RD 0-10V dimmable version output will be 100% with Purple/Grey open and minimum with Purple/Grey Shorted.

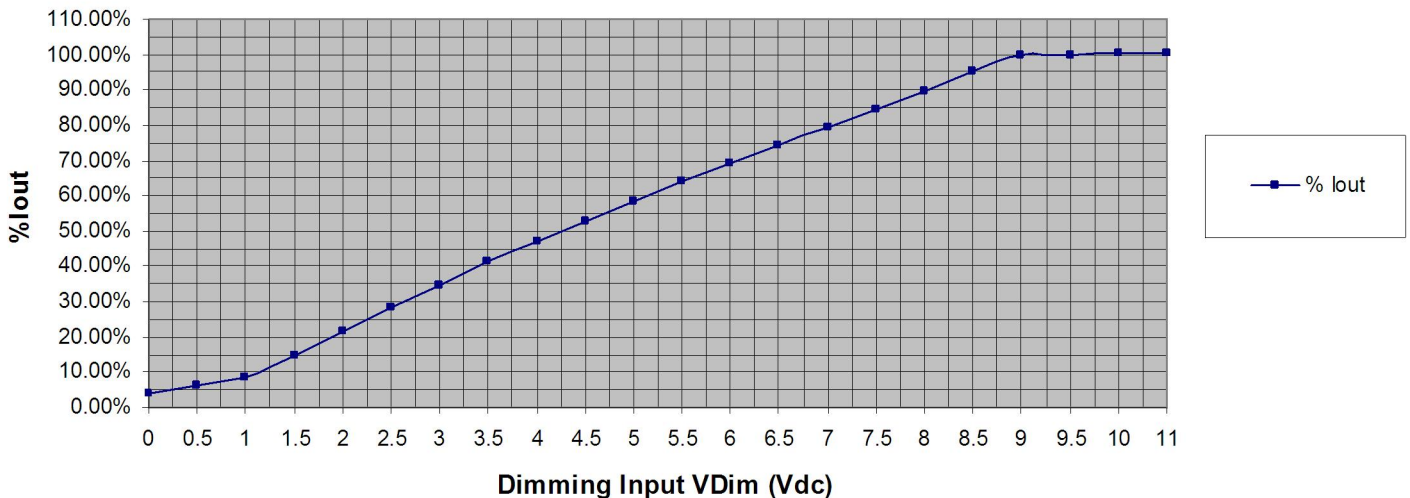
-RD 2-Wire Resistance Dimming Scheme



-RD 2-Wire 0-10V Analog Dimming Scheme



% Output Current vs. 0-10VDC Dimming Input



96 Watt - LP96W Series

CONSTANT VOLTAGE OR CONSTANT CURRENT LED DRIVER WITH DIMMING

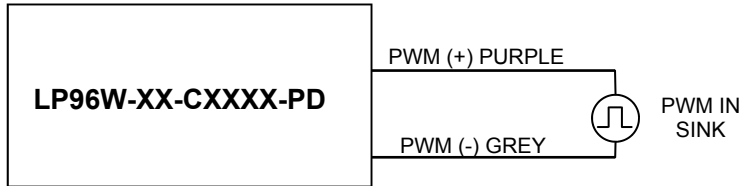
-PD 2-Wire CCR PWM Positive Dimming Scheme

Parameters	Minimum	Typical	Maximum
Absolute Maximum Voltage Range on PWM Input (Purple Wire)	-2.0V	10V	+15V
Input LOW Level Voltage Range (Purple Wire)	-2.0V	0V	+5.5V
Input HIGH Level Voltage Range (Purple Wire)	+9.0V	10V	+15V
Current into PWM Input (Purple Wire)	0mA	—	1.2mA
Source Current out of PWM Input (Purple Wire)	0mA	—	2mA
PWM Input Signal Frequency	500Hz	—	1500Hz
PWM Input Signal Positive Duty Cycle	0%	10-90%	100%

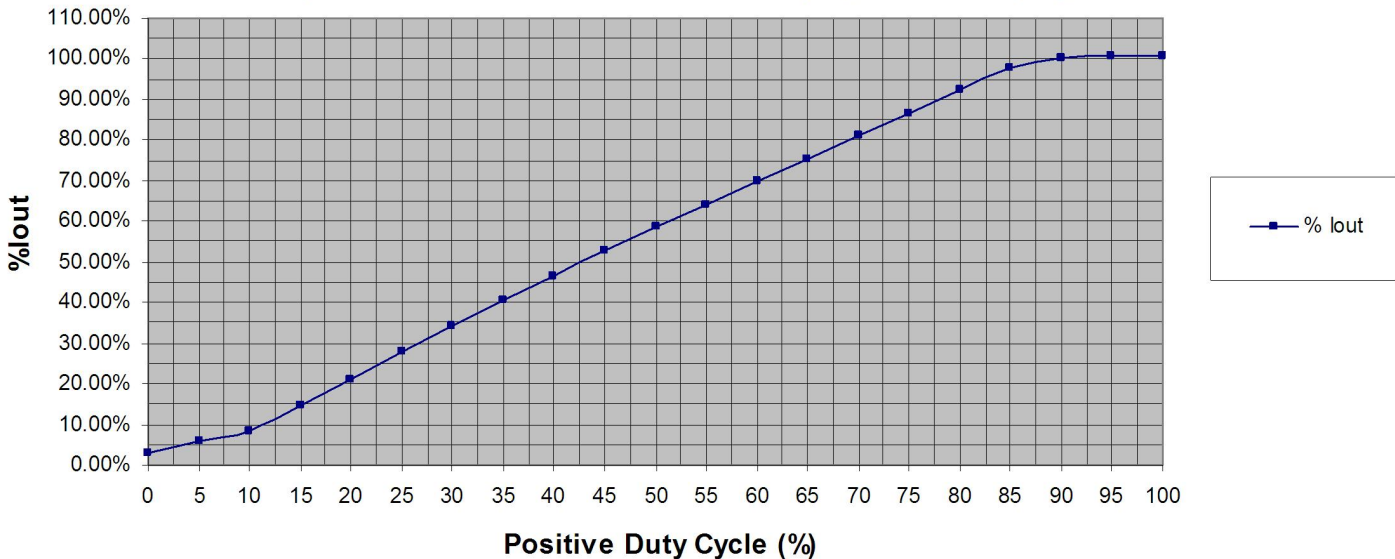
Notes

1. -PD PWM Dimmable version comes with an extra 2 wires +Purple/-Grey on the output side.
2. -PD PWM Dimmable version is not intended to dim below about 5% @ 0% Duty Cycle or 10% @ 10% Duty Cycle
3. -PD PWM dimmable version output will be 100% with Purple/Grey open and minimum with Purple/Grey Shorted.

-PD 2-Wire PWM Positive Dimming Scheme



% Output Current vs. 1.0 kHz, Positive Duty Cycle Dimming Input



96 Watt - LP96W Series

CONSTANT VOLTAGE OR CONSTANT CURRENT LED DRIVER WITH DIMMING

Input Specifications

Parameter	Min.	Typ.	Max.	Notes/Conditions
Input Voltage	90 Vac	—	305 Vac	120, 230, 240, 277 Vac Nominal Values
Input Frequency	47 Hz	—	63 Hz	50/60Hz Nominal
Input AC Current	—	—	0.92 A	Measured at 120Vac/60Hz Input, Output Full load.
	—	—	0.48 A	Measured at 230Vac/60Hz Input, Output Full load.
Inrush Current (Peak)	—	42A	50A	Measured at 277Vac/60Hz Input, Output Full Load, Ta 25°C, Cold Start 50% I _{peak} duration \approx 750 μ sec ($1/2 \cdot I_p^2 \cdot t$)
Inrush Current (I ² t)	—	—	0.94 A ² s	
Leakage Current	—	—	0.28mA	Measured at 120Vac/60Hz Input, Output Full load.
	—	—	0.78mA	Measured at 277Vac/60Hz Input, Output Full load.
THD	—	—	20%	Measured at 120, 230, 277Vac Input, Output \geq 60% Load
Power Factor (PF)	0.90	—	—	Measured at 120, 230, 277Vac Input, Output \geq 60% Load

Output Specifications

Parameter	Min.	Typ.	Max.	Notes/Conditions
DC Output Voltage	Per Table	—	Per Table	Per Tables on Page 1
DC Output Constant Current	-3%	Per Table	+3%	Per Tables on Page 1
Output Power	—	—	Per Table	Per Tables on Page 1
Ripple & Noise (V _{pk-pk})	—	—	5% V _o	20 MHz BW, Full load output in parallel with 0.1 μ F ceramic & 10 μ F Electrolytic.
Ripple (I _{pk-pk})	—	—	5% I _o	20 MHz BW, Full load output in parallel with 0.1 μ F ceramic & 10 μ F Electrolytic. 120 Hz component (Flicker Free)
Start-up Time	—	200 mS	1000 mS	Measured at 120Vac/60Hz Input, Output Full load.
Hold-up Time	—	40 mS	—	Typical @ 277Vac Input, Output Full load.

Environmental Specifications

Parameter	Min.	Typ.	Max.	Notes/Conditions
Case Temperature (T _c)	-30 °C	—	+90 °C	Measured at location specified on case.
Operating Temperature (T _a)	-30 °C	—	+60 °C	This is a reference range. T _c controls temperature range.
Storage Temperature (T _s)	-40 °C	—	+85 °C	Non operating temperature range.
Operating Humidity	—	—	95% RH	Relative Humidity, non-condensing.
Vibration	5 Hz	—	55 Hz	2G, 10 minutes/1 cycle, period 30 minutes, each along X, Y, Z axis.
MTBF	474,000 Hours	—	—	MIL-HDBK-217F Notice 2, T _a = 25C, Output Full Load.

Protection Specifications

Parameter	Min.	Typ.	Max.	Notes/Conditions
Output Short Circuit (SCP)	—	—	—	No Damage, Auto recovery after short is removed.
Output Over Current (OCP)	—	—	+8% I _o	Constant Current Limiting circuit.
Output Over Voltage (OVP)	—	—	120% V _o	No Damage, Auto recovery after fault is removed.

96 Watt - LP96W Series

CONSTANT VOLTAGE OR CONSTANT CURRENT LED DRIVER WITH DIMMING

Safety Compliance

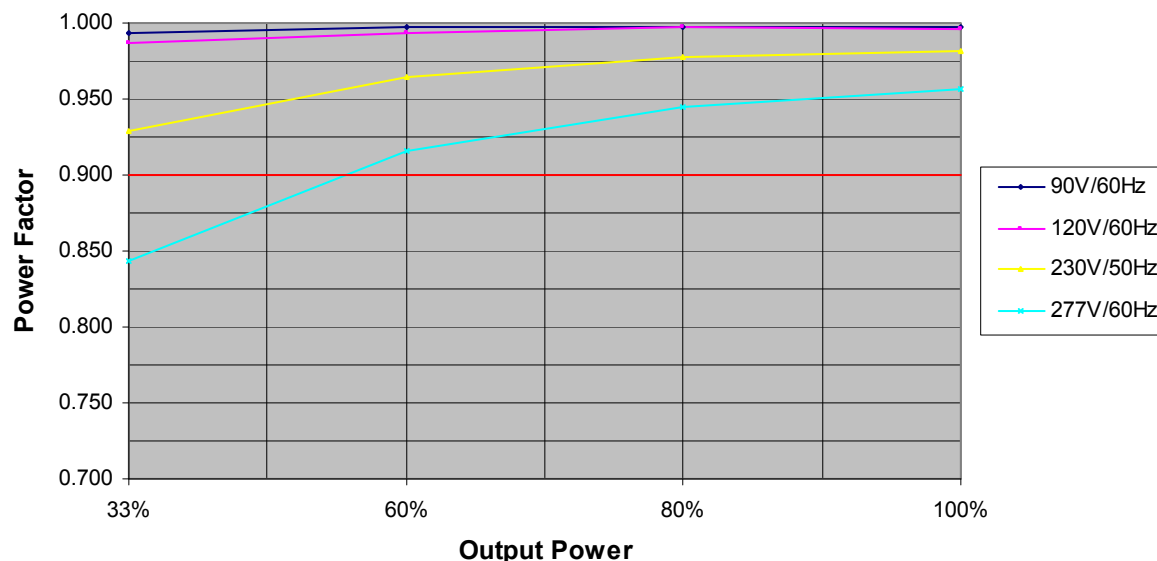
Safety	Notes/Standards
UL/CUL	UL8750 & CAN/CSA-22.2 No. 250.13-12, UL1310 & CAN/CSA-22.2 No. 223-M91 for Class 2, UL1012/CSA-C22.2 No. 107.1 for Non Class 2
CE	EN61347-1, EN61347-2-13
Withstand Voltage	Input to Output: 3750 Vac. Parts use a GDT. Hipot cannot be done with Case or GND connected.
Isolation Resistance	Input to Output: >100 M Ω , 500VDC @ 25 °C, 70 % RH
Dimming Circuit	Dim+ Purple/Dim- Grey are considered part of the secondary circuit.

EMC Compliance

Standard	Notes/Conditions
FCC, 47CFR Part 15	Class B
EN 55015	Limits and methods of measurement of radio disturbance characteristics of electrical lighting and similar equipment.
EN 61000-3-2	Part 3-2: Limits for harmonic current emissions Class C, $\geq 80\%$ Rated Power
EN 61000-3-3	Part 3-3: Limitation of voltage changes, voltage fluctuations and flicker.
EN 61000-4-5	Part 4-5: Surge Immunity test, 2 kV L-N, 4 kV L-FG & N-FG
Energy Star	Energy Star transient protection: Ballast or driver shall comply with ANSI/IEEE C62.41.1-2002 and ANSI/IEEE C62.41.2-2002, Category A operation. The line transient shall consist of seven strikes of a 100 kHz ring wave, 2.5 kV level, for both common mode and differential mode.

Power Factor Curves (Typical)

PF vs. Output Power

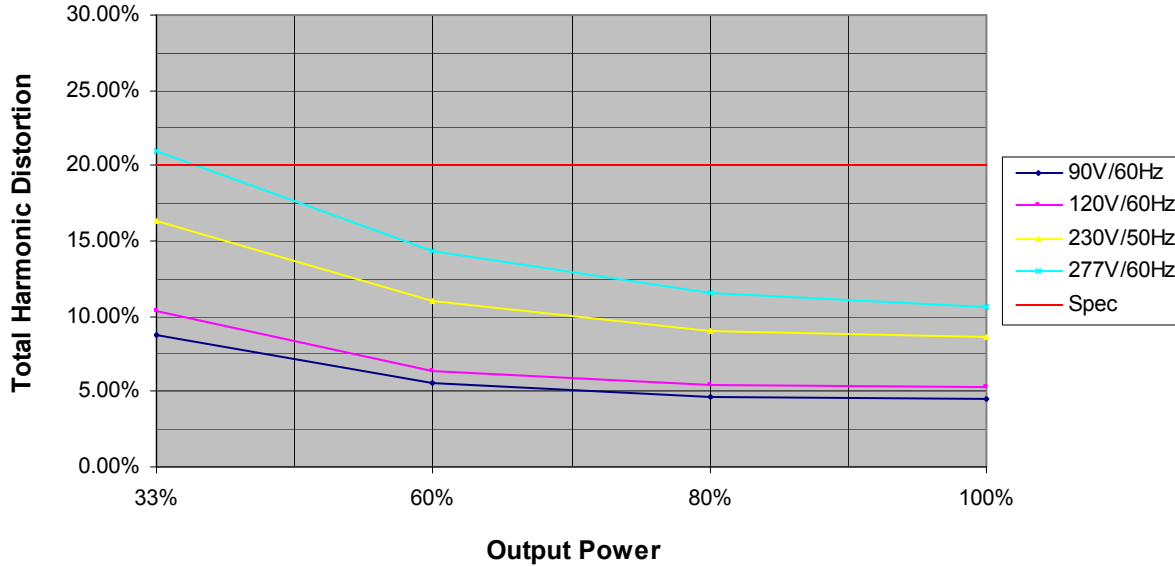


96 Watt - LP96W Series

CONSTANT VOLTAGE OR CONSTANT CURRENT LED DRIVER WITH DIMMING

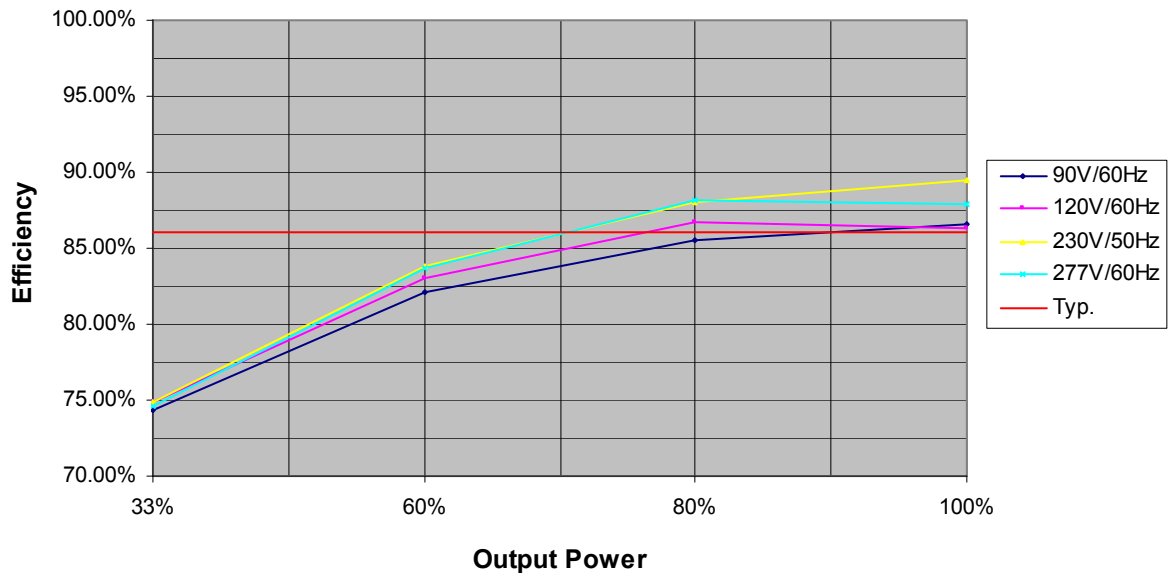
THD Curves (Typical)

THD vs. Output Power



Efficiency Curve (Typical) LD40W-36-C1100-RD

Efficiency vs. Output Power

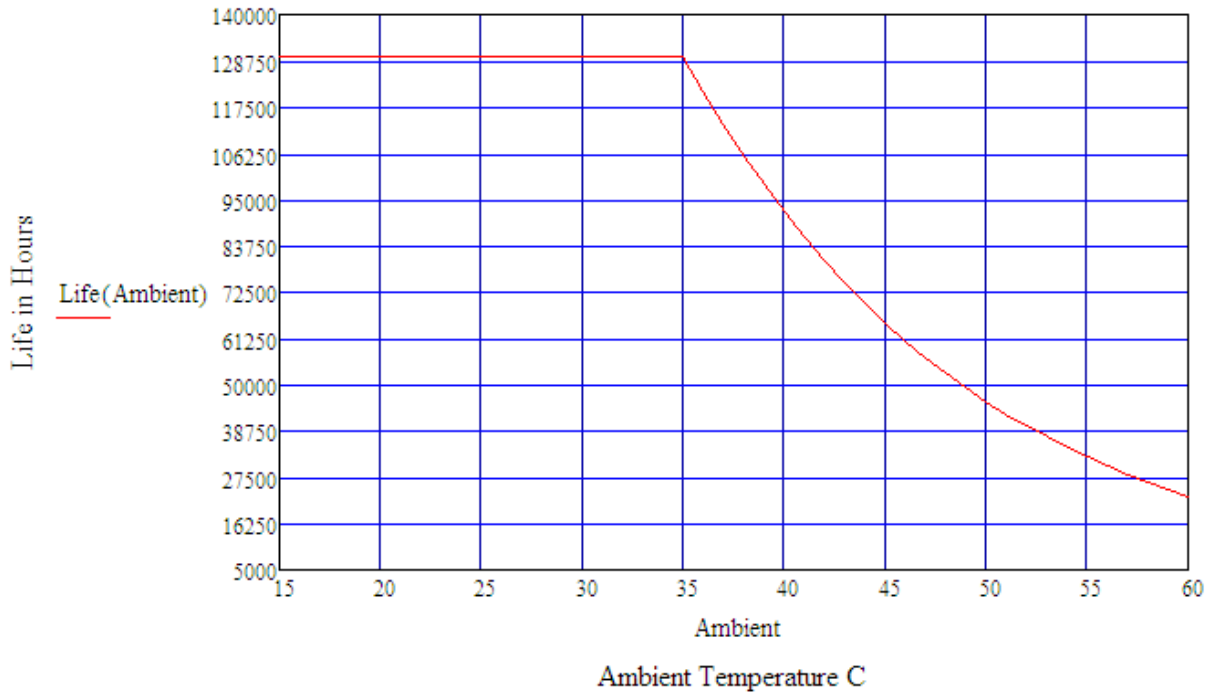


96 Watt - LP96W Series

CONSTANT VOLTAGE OR CONSTANT CURRENT LED DRIVER WITH DIMMING

Life vs. Ambient Temperature

LP96W Estimated Life Full Load @ 120Vac



Life vs. Case (Tc) Temperature

LP96W Estimated Life Full Load @ 120Vac

