

PC SCREW TERMINALS

Designers' Choice

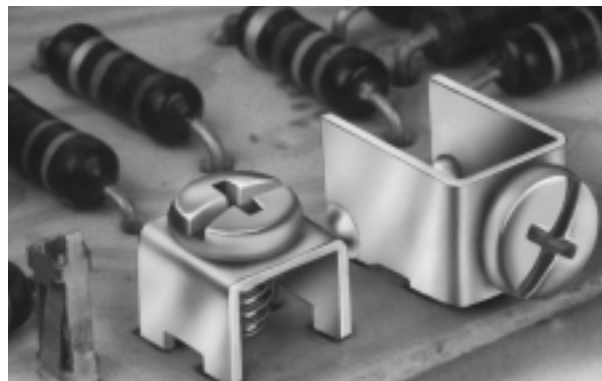
keyelco.com

PC MOUNT SCREW TERMINALS

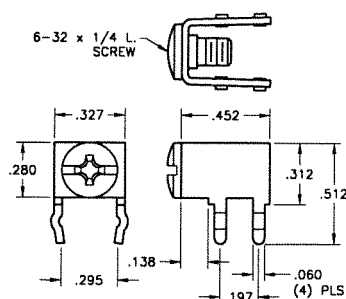
These easy-to-mount, multipurpose screw type terminals are a practical, low-cost alternative to PC screw type edge connectors, barrier blocks, terminal boards and terminal strips. Steadfast and easy to install, will accommodate solid or stranded wire, crimp-type terminals or lugs. Multi-placement of these low-profile terminals make them ideally suited for high-density packaging. Supplied unassembled or with screw installed and captivated.

PRINCIPAL FEATURES

- Low profile
- Stable, no-rock design with exclusive anti-rotational feature
- Easily mounts with four legs into pre-drilled or punched holes
- Accepts 14-22 AWG solid or stranded wire, crimp-type terminals or lugs
- Ideally suited for high-density packaging
- Available in horizontal or vertical mounting
- Space-saving and time saving
- Easy accessibility for PC board testing
- Binding screw is positioned above board level to avoid wicking during wave soldering
- Terminals are made of Brass with Tin Plate
- Supplied with a combination drive 6-32 binding head screw



SNAP-IN
PC MOUNT



CAT. NO. 7690 (Screw Supplied Unassembled)
CAT. NO. 7692 (Screw Installed & Captivated)

HORIZONTAL TYPE

SPECIFICATIONS

Rated: 15 Amps

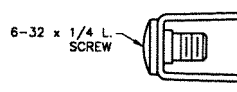
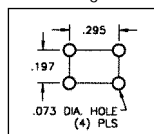
Terminal:

.032 Thick Brass, Tin Plate

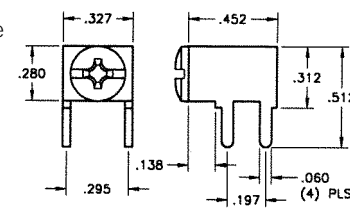
Binding Head Screw:

Brass, Nickel Plate

Mounting Detail



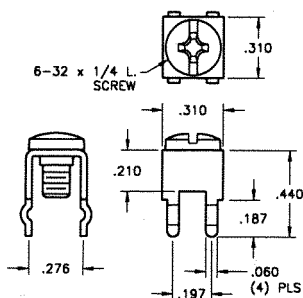
PC MOUNT



CAT. NO. 8190 (Screw Supplied Unassembled)
CAT. NO. 7700 (Screw Installed & Captivated)



SNAP-IN
PC MOUNT



CAT. NO. 7691 (Screw Supplied Unassembled)
CAT. NO. 7693 (Screw Installed & Captivated)

VERTICAL TYPE

SPECIFICATIONS

Rated: 15 Amps

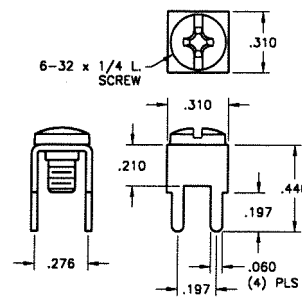
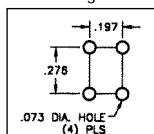
Terminal:

.032 Thick Brass, Tin Plate

Binding Head Screw:

Brass, Nickel Plate

Mounting Detail



CAT. NO. 8191 (Screw Supplied Unassembled)
CAT. NO. 7701 (Screw Installed & Captivated)



PC MOUNT

CUSTOM DESIGNS



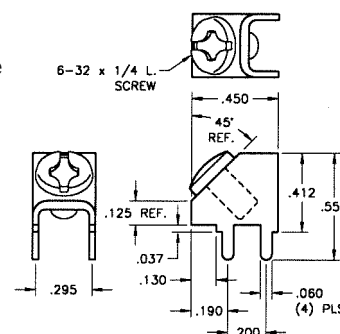
45° PC MOUNT SCREW TERMINAL

SPECIFICATIONS

Rated: 15 Amps

Terminal: .032 Thick Brass, Tin Plate

Binding Head Screw: Brass, Nickel Plate



CAT. NO. 8189 (Screw Supplied Unassembled)
CAT. NO. 7702 (Screw Installed & Captivated)

Mounting Detail

