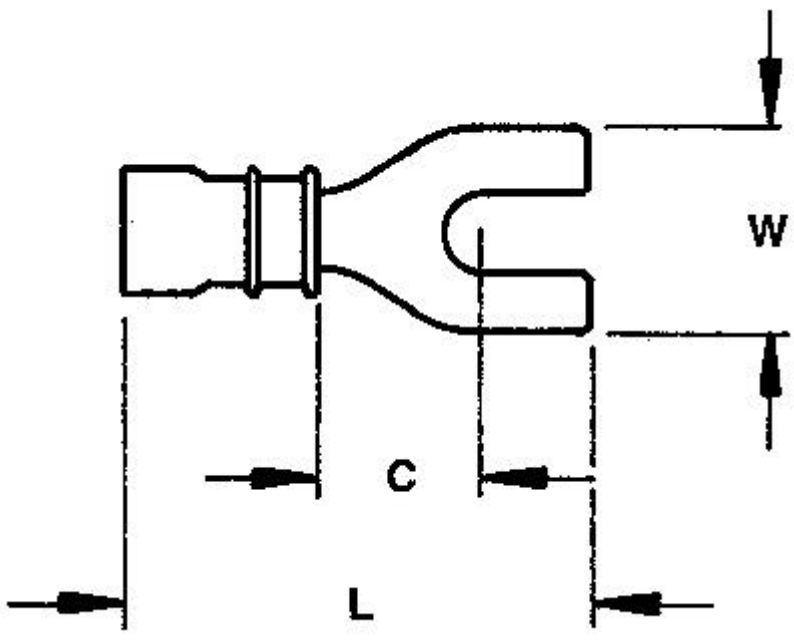


Alphabetical Picture Part Number
SEARCH SEARCH SEARCH

Go To Step Search™ Screen

342199-1 -- 1 of 1 products
Terminals and Splices
Ring and Spade Tongue Terminals

General **INFO**
Sales **INFO**



Line art represents typical product only.

<i>Searchable Features:</i>	
Terminal Shape	Spade Tongue
Body Style	PLASTI-GRIP
Receptacle Style	Straight
Barrel Type	Closed Barrel
Wire/Cable Type	Regular Wire
Wire Range	12-10 [2.70-6.60 ²] AWG [mm]
Insulation	Yes
Insulation Support	Non-Insulation Support
Insulation Diameter	.230 [5.84] Max. in. [mm]
Stud Size	M5
Stud Diameter	.197 [5.00] in. [mm]
Shape	SPADE-021
Heavy Duty	Standard
Packaging Method	Loose Piece
Material	Copper
Finish	Tin
<i>Other Properties:</i>	
Dim. C	.295 [7.50] in. [mm]
Dim. L	1.078 [27.40] Max. in. [mm]
Dim. W	.406 [10.31] in. [mm]
Color	Yellow
Insulation Material	Vinyl
Insulation Sleeve Material	PVC
CERTI-CRIMP Hand Tool	59239-4, 525692-0 (Great Britain Tool)