

## LARGE INSULATED CROCODILE CLIP

### PRODUCT SPECIFICATION

Sheet No. **PS 0401**

Date : 15.02.95

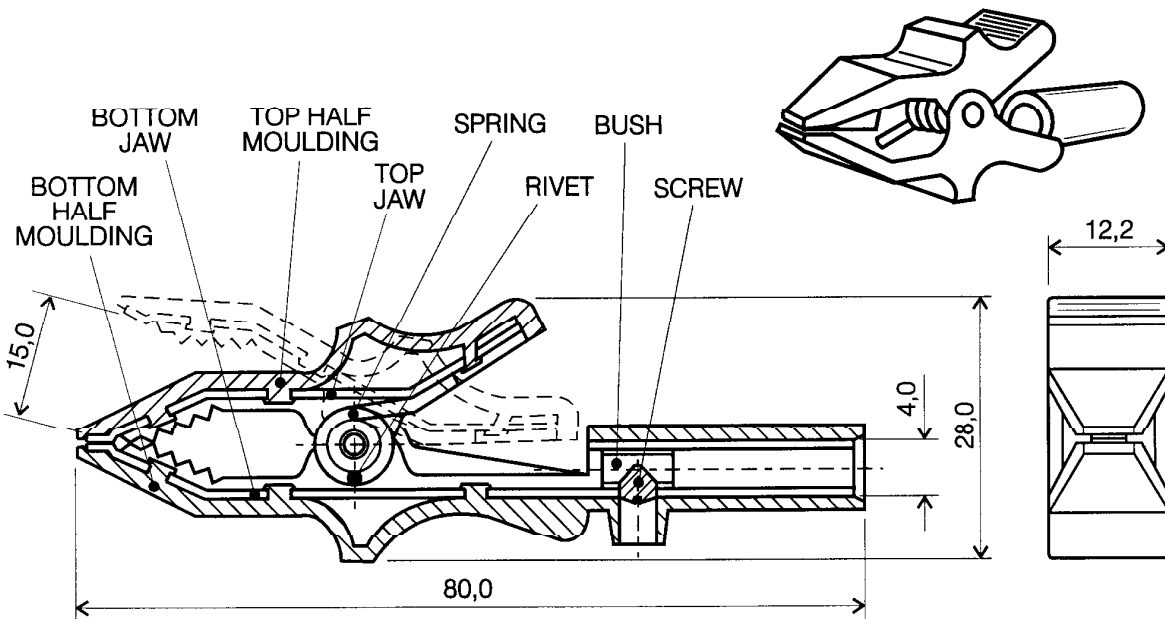
Issue No. 4 (02.08.95)

Sheet 1 of 1

Signature

Deltron Part No. **307-0100 BLACK**  
**307-0500 RED**

### Dimensions



### Description

Shrouded jaws make this product ideally suitable for instrumentation usage. The rear entry socket will accept 4mm plugs or wires clamped by an integral screw. The acetal moulding is available in two colours, red or black, and the internal metalwork is nickel plated steel.

Rated at 10 Amps

### Features

#### MATERIALS

TOP HALF MOULDING	Noryl SE1 604
TOP JAW	B.M.S., nickel plated
BOTTOM HALF MOULDING	Noryl SE1 604
BOTTOM JAW	B.M.S., nickel plated
SPRING	Spring Steel
RIVET	Brass
BUSH	Brass
SCREW	Brass