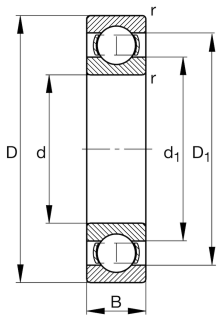


**FAG****16010-A-C3**

Deep groove ball bearing

Deep groove ball bearing 160..-A, single row,
steel sheet metal cage

Technical information



Your current product variant

Changed internal design	A	Design variant A
Sealing	Without	Not sealed
Cage	JN	Steel sheet metal
Tolerance class	PN	Normal (PN)
Dimensional / heat stabilization	SN	Rings dimensional stabilized up to 120°
Lubricant	Without	Bearing not greased
Radial internal clearance	C3 (Group 3)	Internal clearance larger than CN
Bore type	Z	Cylindrical

Main Dimensions & Performance Data

d	50 mm	Bore diameter
D	80 mm	Outside diameter
B	10 mm	Width
C _r	15,990 N	Basic dynamic load rating, radial
C _{0r}	13,230 N	Basic static load rating, radial
C _{ur}	760 N	Fatigue load limit, radial
n _G	12,200 1/min	Limiting speed
n _{gr}	6,300 1/min	Reference speed
m	0.175 kg	Weight



Mounting dimensions

$d_{a\ min}$	53.2 mm	Minimum diameter shaft shoulder
$D_{a\ max}$	76.8 mm	Maximum diameter of housing shoulder
$r_{a\ max}$	0.6 mm	Maximum fillet radius

Dimensions

$r_{\ min}$	0.6 mm	Minimum chamfer dimension
$D_{\ 1}$	72.1 mm	Shoulder diameter outer ring
$d_{\ 1}$	61.9 mm	Shoulder diameter inner ring

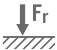





Temperature range

$T_{\ min}$	-30 °C	Operating temperature min.
$T_{\ max}$	120 °C	Operating temperature max.

Calculation factors

$f_{\ 0}$	16.3	Calculation factor
-----------	------	--------------------

Characteristics

	Radial load
	Axial load in one direction
	Axial load in two directions
	Grease Lubrication
	Oil Lubrication
	Not sealed