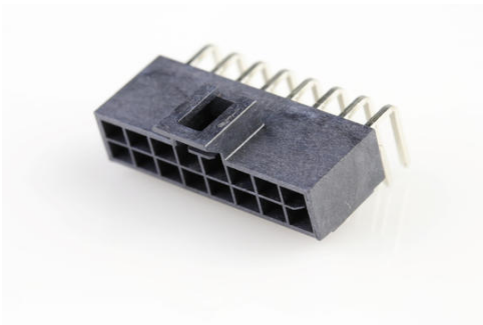




**Part Number :** [1053141116](#)  
**Product Description :** Nano-Fit Right-Angle Header, Through Hole, 2.50mm Pitch, Dual Row, 16 Circuits, Tin (Sn) Plating, Black, Glow-Wire Capable, Tray  
**Series Number :** 105314  
**Status :** Active  
**Product Category :** PCB Headers and Receptacles  
**Packaging Alternative :** [1053141516](#) (Embossed Tape on Reel)



## Documents & Resources

### Drawings


- [1053141116\\_sd.pdf](#)
- [PK-105309-200-000.pdf](#)
- 3D Models and Design Files
- [1053141116\\_stp.zip](#)
- [SYM-105314-XX16-001.zip](#)

### Specifications

- [AS-105300-100-001.pdf](#)
- [1053001000-PS-CH-000.pdf](#)
- [1053001000-PS-ES-000.pdf](#)
- [1053001000-PS-JP-000.pdf](#)
- [1053001000-PS-SK-000.pdf](#)
- [PS-105300-100-001.pdf](#)
- [1053001000-TS-000.pdf](#)

## Product Environment Compliance

### Compliance

GADSL/IMDS	Compliant with Exemption 44; 33
China RoHS	 per SJ/T 11365-2006
EU ELV	Not Relevant
Low-Halogen Status	Low-Halogen per IEC 61249-2-21

REACH SVHC	Not Contained per D(2024)7663-DC (21 Jan 2025)
EU RoHS	Compliant per EU 2015/863

Compliance Statements

- EU RoHS
- REACH SVHC
- Low-Halogen

Industry Documents

- IPC 1752A Class C
- IPC 1752A Class D
- Molex Product Compliance Declaration
- IEC-62474
- chemSHERPA (xml)

Substances of Interest

- PFAS

EU RoHS Certificate of Compliance

Additional Product Compliance Information

---

**Part Details**

**General**

Status	Active
Category	PCB Headers and Receptacles
Series	105314
Description	Nano-Fit Right-Angle Header, Through Hole, 2.50mm Pitch, Dual Row, 16 Circuits, Tin (Sn) Plating, Black, Glow-Wire Capable, Tray
Application	Power, Wire-to-Board
Component Type	PCB Header
Product Name	Nano-Fit
UPC	887191927527

**Agency**

CSA	LR19980
UL	E29179

**Electrical**

Current - Maximum per Contact	7.5A
Voltage - Maximum	250V AC (RMS)/DC

## Physical

Breakaway	No
Circuits (Loaded)	16
Circuits (maximum)	16
Color - Resin	Black
Durability (mating cycles max)	25
Flammability	94V-0
Glow-Wire Capable	Yes
Guide to Mating Part	No
Keying to Mating Part	Yes
Lock to Mating Part	Yes
Material - Metal	Brass
Material - Plating Mating	Tin
Material - Plating Termination	Tin
Material - Resin	Liquid Crystal Polymer
Net Weight	1.690/g
Number of Rows	2
Orientation	Right Angle
Packaging Type	Tray
PCB Locator	Yes
PCB Retention	Yes
PCB Thickness - Recommended	1.60mm, 2.40mm
PC Tail Length	3.20mm
Pitch - Mating Interface	2.50mm
Pitch - Termination Interface	2.50mm
Plating min - Mating	1.524µm
Plating min - Termination	1.524µm
Polarized to Mating Part	Yes
Polarized to PCB	Yes
Shrouded	Yes
Stackable	No
Temperature Range - Operating	-40° to +125°C

Termination Interface Style	Through Hole
-----------------------------	--------------

---

**Mates With / Use With**

**Mates with Part(s)**

Description	Part Number
Nano-Fit Receptacle Housing, TPA Capable, 2.50mm Pitch, Dual Row, 16 Circuits, Black, Glow-Wire Capable	<u>1053081216</u>
Nano-Fit Receptacle Housing, TPA Capable, 2.50mm Pitch, Dual Row, 16 Circuits, Black, Glow-Wire Capable, for UL 1569/1007 Wire	<u>2263621216</u>