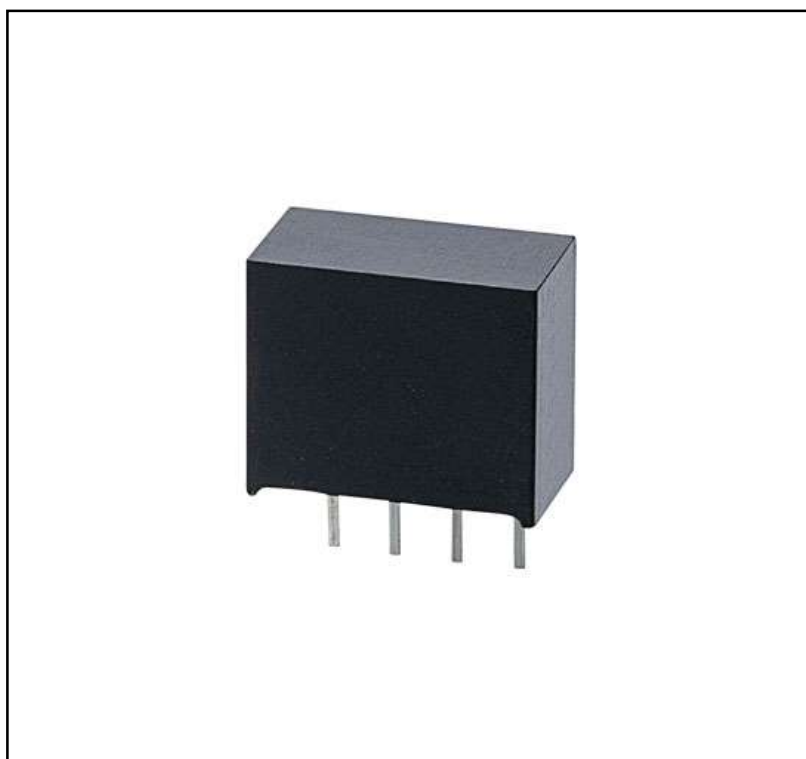


Features

- 1 Watt output power
- SIP4 package
- 1:1 input voltage range
- Industry standard pin-out
- 1 KVDC isolation
- Operating temperature range -40°C to +95°C
- High efficiency up to 80%
- UL62368-1, IEC62368-1, EMC- EN55032/55024 approval

Isolated DC-DC converter

RS Stock No.: 2853136



RS PRO is the own brand of RS. The RS PRO Seal of Approval is your assurance of professional quality, a guarantee that every part is rigorously tested, inspected, and audited against demanding standards. Making RS PRO the Smart Choice for our customers.

Product Description

The DC-DC converter is specially designed for industry control application, tele-communication application.

OP temperature is full load from -40 °C to 85°C and 1000Vdc isolation.

No minimum load required.

Input range is +/-10 %.

General Specifications

Type	1W Isolated DC-DC converter
Regulated/Unregulated	Regulated
Efficiency ^{*1}	Typ. 80%
Applications	Industry control application, tele-communication application

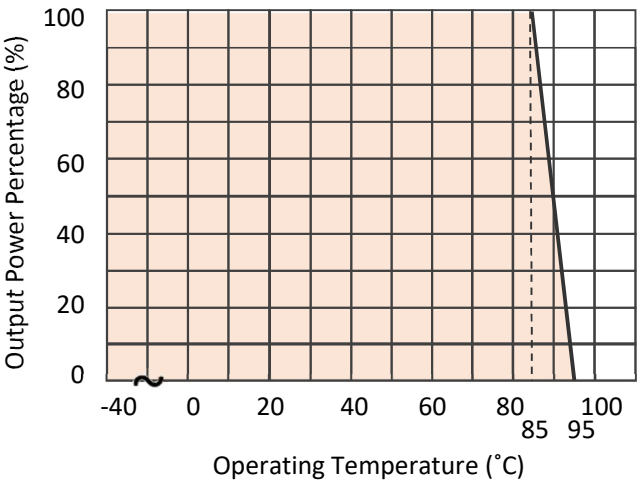
Specifications

Output Voltage	5V dc
Input Voltage	5V dc
Output Current	200mA
Input Voltage Range	±10%
Output Voltage Accuracy	±5%
Capacitive Load ^{*2}	Max. 1500µF
Power Rating	1W
Operating Frequency	Min. 50KHz
Ripple and Noise ^{*3}	Max. 100mV pp
MTBF	Max. 13100000hours (25°C)
Line Regulation	1.2% typ. @1% of Vin
Load Regulation	15% (10% to 100% load)
Isolation Voltage	Min. 1000V dc/ 1 min., Input to Output
Isolation Resistance	Min. 10G Ω
Isolation Capacitance	Typ. 20pF
Safety Approvals	UL62368-1/ IEC62368-1/ EN55032&35
Certificate	RoHS / REACH / CE

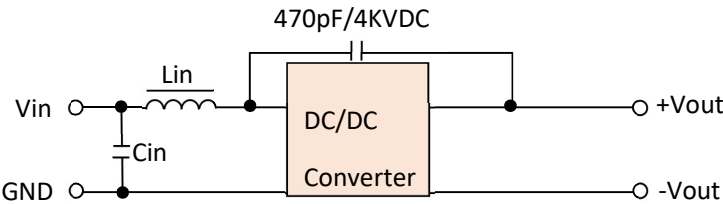
General Specifications

Operating Temperature	-40 to 95°C
Storage Temperature	-55 to 125°C
Relative Humidity	5 to 95%RH

Derating



EMC Compliance Circuit



Class	Inductance/Capacitance (Lin/Cin)
Class A	47μH/2.2μF
Class B	47μH/10μF

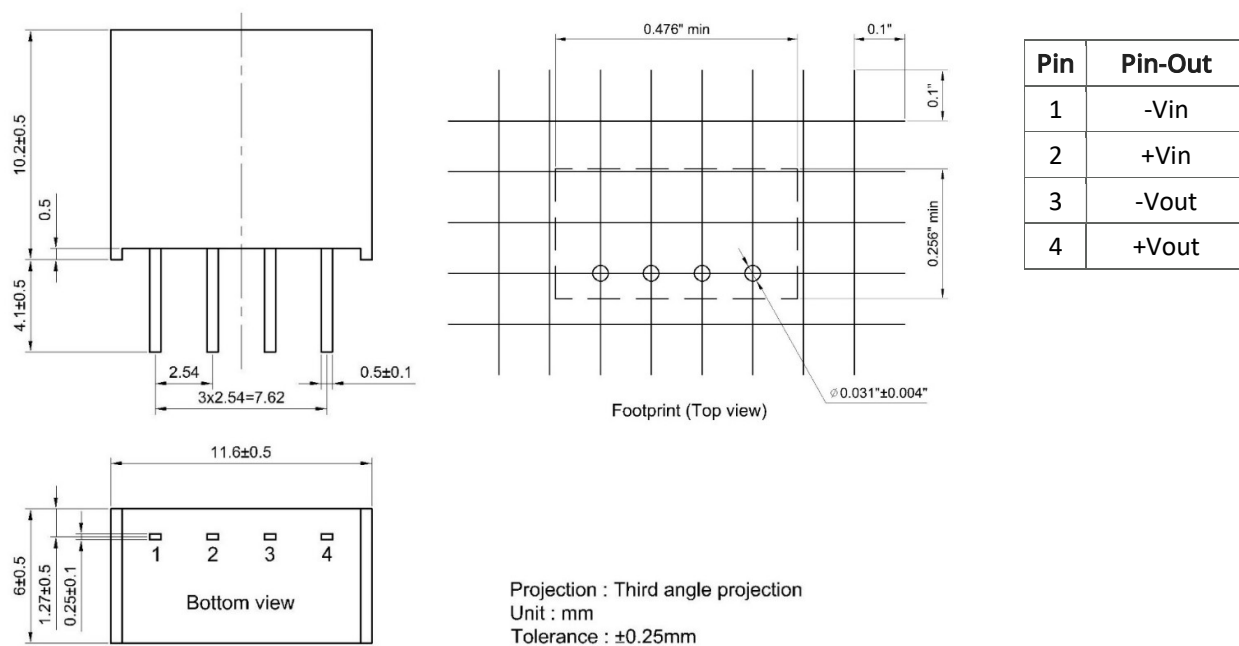
EMC Specifications

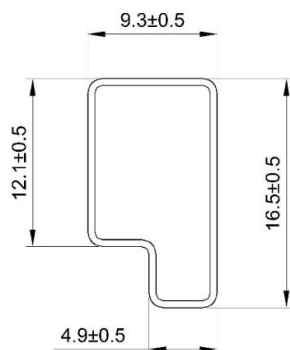
EMI	Class A/B EN 55032
ESD	Criteria A IEC 61000-4-2, Air \pm 8kV; Contact \pm 6kV
RS	Criteria A IEC 61000-4-3, 10V/m
EFT	Criteria A IEC 61000-4-4, \pm 0.5kV
Surge	Criteria A IEC 61000-4-5, \pm 0.5kV
CS	Criteria A IEC 61000-4-6, 10Vr.m.s
PFMF	Criteria A IEC 61000-4-8, 1A/m

Mechanical Specifications

Case Material	UL94V-0 black plastic
Potting Material	Epoxy
Dimensions	11.60 x 6.00 x 10.20 mm
Weight	1.4g
Cooling	Natural convection

Dimension & Pinning



Package

UNIT:mm
1 Tube = 41 pcs
Length: 520 ± 2 mm

1. ^{*1} The efficiency is test by nominal input and max. full load at 25°C.
2. ^{*2} The capacitive load is test by minimum input and constant resistive load.
3. ^{*3} Ripple and Noise measured with 20MHZ BW and 0.1μF ceramic capacitor.