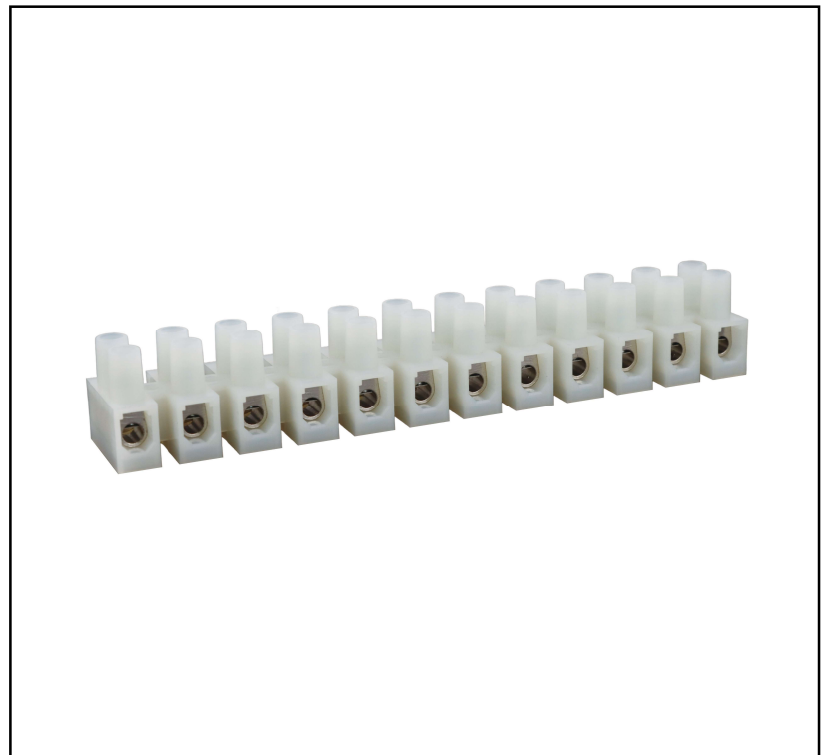


Features

- Operating Temperature: -30° C ~ 105° C
- Insulating Body: PA66
- Nickel-Plated brass contacts with Steel wire protectors and Zinc plated screws
- Usage: Peel the coat of wire, then insert to tube. Use pincers to fix them.

RS PRO H Type Terminal Block

RS Stock No.: 0447065



RS PRO is the own brand of RS. The RS PRO Seal of Approval is your assurance of professional quality, a guarantee that every part is rigorously tested, inspected, and audited against demanding standards. Making RS PRO the Smart Choice for our customers.

Product Description

- *For use in electrical appliances, lighting and building wiring.*
- *Recessed screws and tubular contacts provide added safety and help prevent short circuits.*

General Specifications

Series	BCM135
For Use with	Cables
Category	H Type Terminal Blocks
Conductor Size	8-22AWG
Colour	White

Electrical Specifications

Electrical Rating	50A, 600V
-------------------	-----------

Mechanical Specifications

Dimensions	25.2±0.3mm (H) x 13.5*(P-1)+9.4±0.5mm (L)x 25.6±0.3mm (W)
------------	---

Approvals

Safety	N/A
Declarations	CE

DIMENSIONAL DRAWING / CONNECTION DIAGRAM / DETECTION AREA

Type No.: BCM135

Order No.: BCM 135 – 12V2A

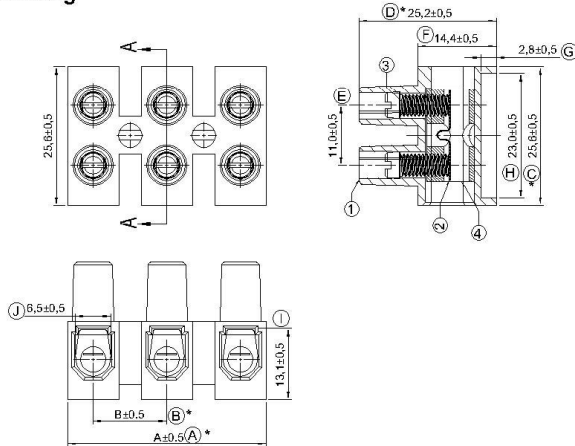
12: 12 Poles
Pitch=13.5mm

RoHS
Compliant

Product Specifications

Current rating : 50 Amp AC 600V
 Insulation withstands volt : AC2000V min
 Insulation resistance : >2000 MΩ DC 500V
 Operation temperature : -30°C to +105°C
 Continuous working temp : 105°C MAX
 Wire range : 8~20AWG
 Screw torque : 4.4 Lb-inch(0.5 Nm)

Drawing



Pitch: 13.50 mm (0.531inch)					
Poles	A(mm)	B(mm)	Poles	A(mm)	B(mm)
02	22.90	13.50	08	103.90	94.50
03	36.40	27.00	09	117.40	108.00
04	49.90	40.50	10	130.90	121.50
05	63.40	54.00	11	144.40	135.00
06	76.90	67.50	12	157.90	148.50
07	90.40	81.00			

CONFIRMED & ACCEPTED BY				
	Material		Plating/Finish	Remark
1	Insulating body	PA-66(UL-94 V2)	Natural Colour	
2	Wire Protector	stainless steel		
3	Screw	Steel	Zinc plated	
4	Cage clamp	Brass	Ni plated	