

DPCB PUNCHED PLAIN COPPER BUSBAR, SINGLE



CERTIFICATIONS



FEATURES

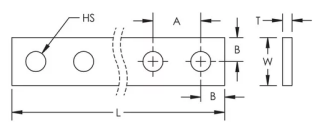
- Heavy-duty power connection
- Circuit breaker, generator and prefabricated power network conductor
- Alternative to large and multiple cables
- Earth/ground connection
- Power distribution
- Rounded edges

SPECIFICATIONS

Table 1/2						
Catalog Number	Article Number	Material	Width (W)	Thickness (T)	Length (L)	Hole Size (HS)
DPCB25X5	550400	Copper	0.98"	0.2"	68.9"	0.41"

Table 2/2				
Catalog Number	Article Number	A	B	Unit Weight
DPCB25X5	550400	0.98"	0.49"	3.09 lb

DIAGRAMS



WARNING

nVent products shall be installed and used only as indicated in nVent's product instruction sheets and training materials. Instruction sheets are available at www.nvent.com and from your nVent customer service representative. Improper installation, misuse, misapplication or other failure to completely follow nVent's instructions and warnings may cause product malfunction, property damage, serious bodily injury and death and/or void your warranty.

North America

+1.800.753.9221
Option 1 – Customer Care
Option 2 – Technical Support

Europe

Netherlands:
+31 800-0200135
France:
+33 800 901 793

Europe

Germany:
800 1890272
Other Countries:
+31 13 5835404

APAC

Shanghai:
+ 86 21 2412 1618/19
Sydney:
+61 2 9751 8500



Our powerful portfolio of brands:
nVent.com CADDY ERICO HOFFMAN RAYCHEM SCHROFF
TRACER