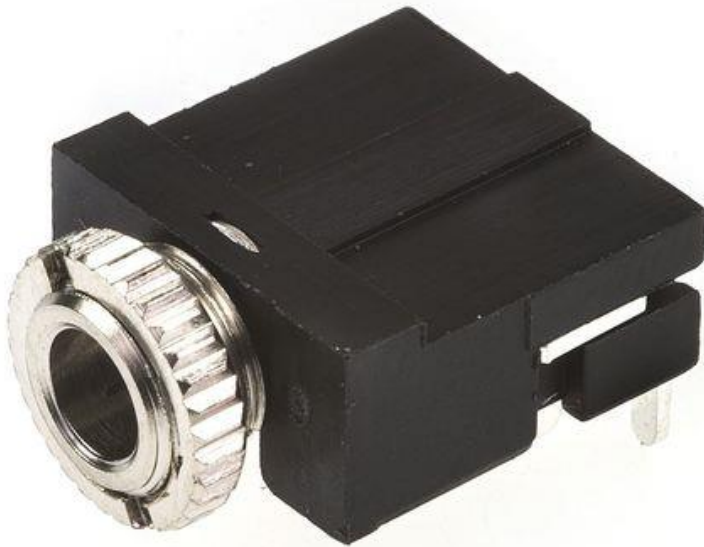


Datasheet

Stock No: 476-328

# RS Pro 4832, 3.5mm PCB Mount Stereo Jack Socket, Female, 30 V ac/dc



## Product Details

### PCB Chassis Mounting Socket

Enclosed chassis socket with silver or nickel plated closed circuit contacts (single circuit). Plated mounting bush. Earth contact connected to bush, for use with 3.5mm stereo jack plugs.

Dimensions (mm)		
Mounting hole dia.		6
Max. panel thickness		2
L 15.5	W 12	H 6

3.5mm RS



ENGLISH

## Specifications:

Gender	Female
Size	3.5 mm
Mounting Type	PCB Mount
Type	Stereo Jack Socket
Body Orientation	Straight
Termination Method	Solder
Contact Plating	Silver
Housing Material	Plastic
Voltage Rating	30 V ac/dc
Series	4832
Contact Material	Brass