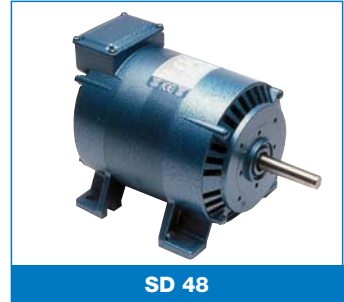
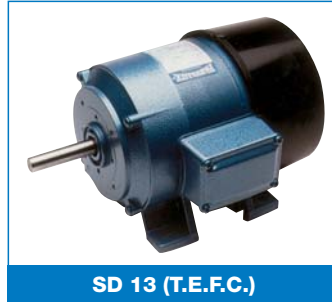


Motor Types:
SD 13 SD 18
SD 48

1 or 3 Phase Induction Motors – Constant Speed
Permanent Capacitor, Capacitor Start Induction Run, or Synchronous
 Enclosures: Standard – Ventilated Internal Fan Cooled (IP 20)
 Alternative – Totally Enclosed (IP 50) with Terminal Box or T.E.F.C. (IP 54)



- Voltage Range:** 100/120v – 220/240v A.C. single phase, 50Hz. 380/440 A.C. three phase, 50Hz. Special voltages and frequencies quoted on request.
- Motor Type:** Single phase with separate capacitor or three phase induction, suitable for reversing. (Capacitor start induction run – SD 18 and SD 48, both reversible but must be allowed to come to rest).
- Starting Currents:** Capacitor or three phase induction: approx 2.5 times full load. Capacitor start induction run: 3 times full load.
- Construction: Motors** – Shielded ball bearings spring loaded for quiet running.
Single Reduction Gearboxes: Fitted with ball bearings, alloy gearbox with composite gear, grease lubricated for life and suitable for mounting in any position.
In-Line Double Reduction Gearboxes: Fitted with ball bearings, alloy gearbox with composite gears, oil bath lubricated for life and suitable for mounting in any position.
Spur Reduction Gearboxes: Fitted with ball bearings, alloy gearbox with composite pinion gear and multi-spur type hardened steel gears, oil bath lubricated for life. Suitable for mounting in any position.
- Connections:** 30cm P.V.C. flexible (SD 18 and SD 48 terminal box).
- Insulation:** Class 'F' (maximum temperature rise 115°C at a maximum ambient of 40°C).
- Specifications:** B.S. 5000 part 11. (I.E.C. 72). (CSA C-US if required).

- Optional Extras:** Double ended motor spindles.
 Double ended gear shafts, (not available on in-line gearboxes).
 Non standard shafts (stainless steel, keyways, flats, etc).
 Terminal box.
 Totally enclosed frame half hour rating.
 Totally enclosed fan cooled frame (T.E.F.C.), continuous rating. (Not SD 18).
 Enclosure IP 65 on request.
 Thermal overload protection.
- Electro-Magnetic Brake:** Page 6.
- Tachogenerator:** Page 117.
- Additional Extras for Geared Units:** Non standard catalogue reductions available on request.
- Bronze Gears:** (Single and double reduction final gears).
- Flange Mounting Gearbox Details:** Page 114.
- Gearbox Shaft Positions:** Page 113.

Single Phase								
SD 13 SD 18	Permanent Capacitor							
	FULL LOAD R.P.M.	OUTPUT WATTS	STARTING TORQUE FULL LOAD	CURRENT (AMPS)		INPUT WATTS	CAPACITOR (M.F.D.)	
				240V	220V		240V	220V
900	38	100%	0.46	0.43	119	4	4	
1400	100	75%	0.76	0.74	180	6	6	
2800	150	80%	1.2	1.2	290	8.4	8.4	
Capacitor Start Induction Run (SD 18 only)								
1400	95	150%	1.2	1.1	180	40/50 M.F.D. 280 – 350V R.M.S. Electrolytic		
2800	125	130%	1.2	1.2	240			
Two Speed Permanent Capacitor								
1400 / 2800	50 / 100	50%	1.0 / 0.72	0.9 / 0.8	170 / 190	10	10	
Synchronous Permanent Capacitor								
1500 (Syn)	25	100%	0.5	0.55	100	6	6	

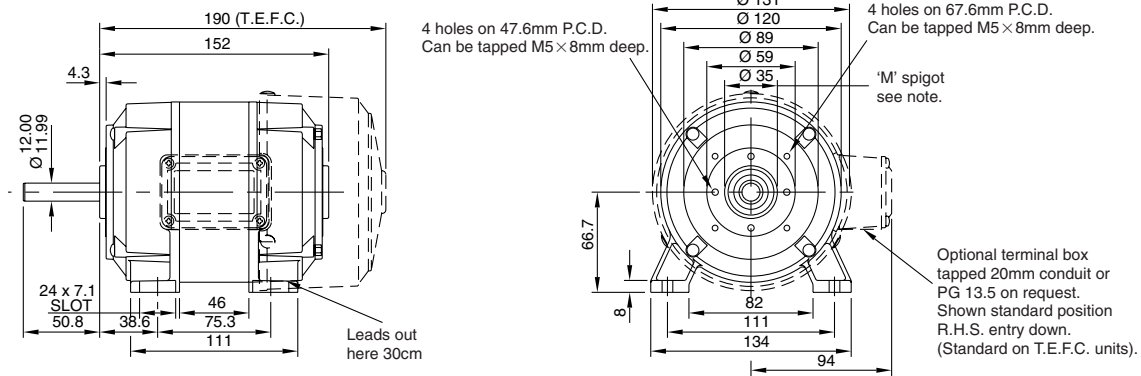
Three Phase						
SD 13 SD 18	FULL LOAD R.P.M.	OUTPUT WATTS	STARTING TORQUE FULL LOAD	CURRENT (AMPS)		INPUT WATTS
				440V	380V	
				900	60	
1400	125	150%	0.44	0.41	210	
2800	190	150%	0.46	0.45	273	
Two Speed						
1400 / 2800	50 / 100	150%	0.38	0.32	120 / 160	
Synchronous						
1500 (Syn)	30	100%	0.3	0.34	110	

Single Phase							
SD 48	Capacitor Start – Induction Run						
	FULL LOAD R.P.M.	OUTPUT WATTS	ENCLOSURE	STARTING TORQUE FULL LOAD	CURRENT AMPS 220/240V	INPUT WATTS	CAPACITOR (M.F.D.)
							220/240V
1400	125	Ventilated (IP 20)	175%	1.5	250	40/50 M.F.D.	
1400	150	T.E.F.C. (IP 54)	150%	1.7	308	280-350V R.M.S.	
2800	190	Vent or T.E.F.C.	130%	1.7	324	ELECTROLYTIC	

Three Phase						
SD 48	FULL LOAD R.P.M.	OUTPUT WATTS	STARTING TORQUE FULL LOAD	CURRENT (AMPS)		INPUT WATTS
				440V	380V	
				1400	190	
2800	250	150%	0.75	0.74	400	

Dimensions in mm. Scale 1:5

SD 13



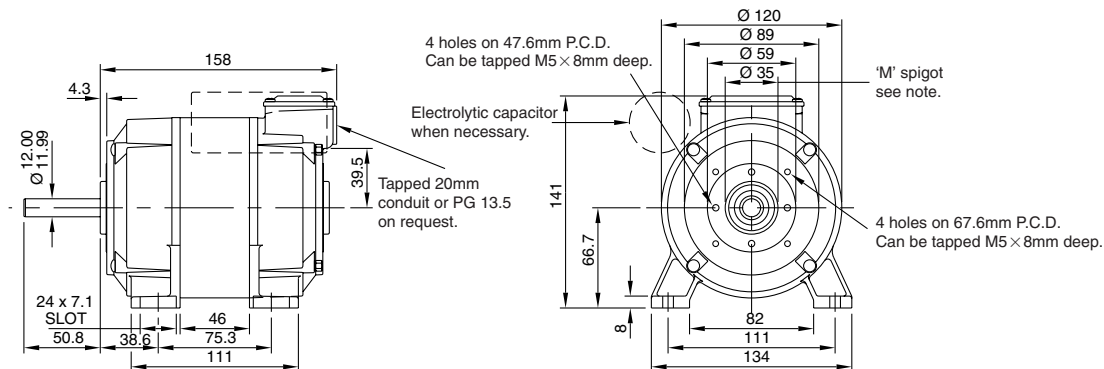
Spigot 'M' can be machined to 34.54/34.49mm dia. concentric with shaft 0.05mm T.I.R.
Optional shaft at lead end, 12mm dia. x 51mm long. Not applicable to T.E.F.C. units.

Approx. weight: SD 13 – 5.40 Kg

Induction 1 & 3 Ph

Dimensions in mm. Scale 1:5

SD 18

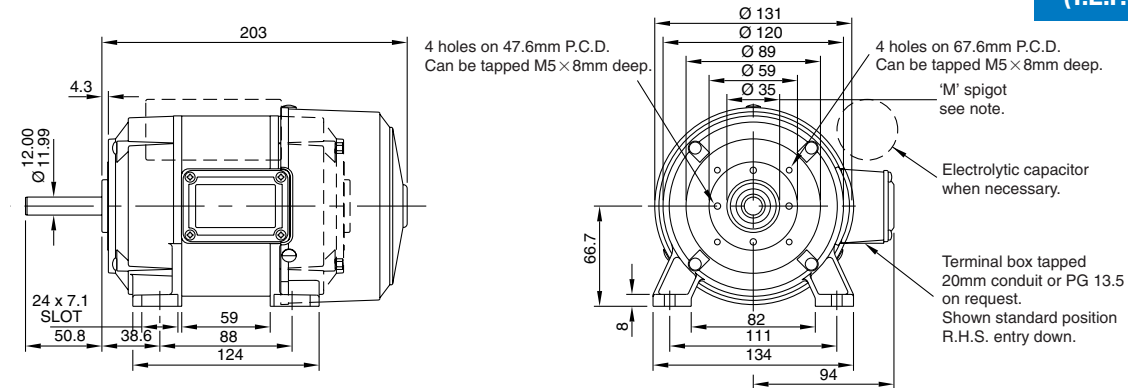


Spigot 'M' can be machined to 34.54/34.49mm dia. concentric with shaft 0.05mm T.I.R.
Optional shaft at terminal box end, 12mm dia. x 51mm long.

Approx. weight: SD 18 – 5.40 Kg

Dimensions in mm. Scale 1:5

SD 48
(T.E.F.C.)

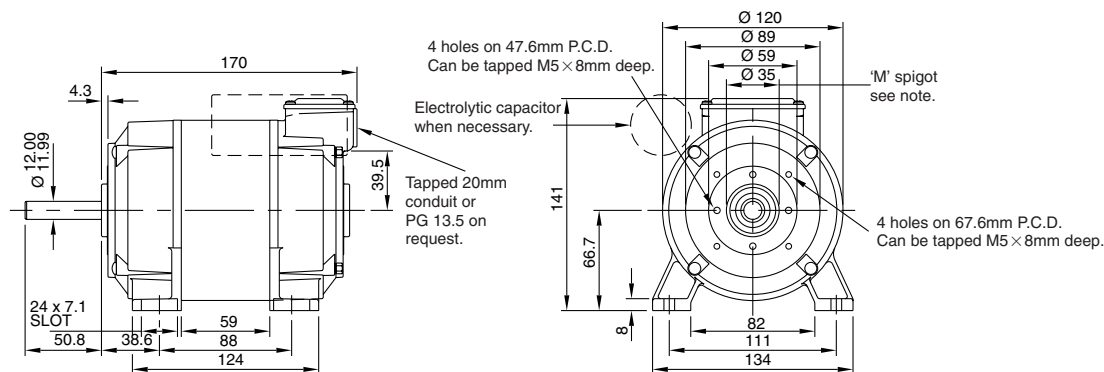


Spigot 'M' can be machined to 34.54/34.49mm dia. concentric with shaft 0.05mm T.I.R.

Approx. weight: SD 48 T.E.F.C. – 6.50 Kg

Dimensions in mm. Scale 1:5

SD 48



Spigot 'M' can be machined to 34.54/34.49mm dia. concentric with shaft 0.05mm T.I.R.
Optional shaft at terminal box end, 12mm dia. x 51mm long.

Approx. weight: SD 48 – 6.40 Kg