



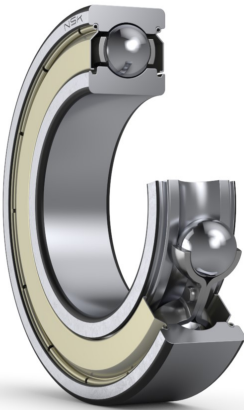
# PRODUCT DATASHEET

Datasheet creation date: 2025/05/28 8:26 (UTC)



## 6807ZZ

### Single-Row Deep Groove Ball Bearings



#### Boundary Dimensions

d	35	mm	Bore diameter
D	47	mm	Outside diameter
B	7	mm	Width
r (min.)	0.3	mm	Chamfer dimension

#### Basic Load Ratings

Cr	5400	N	Basic dynamic load rating
C0r	4100	N	Basic static load rating

#### Speeds

Grease	14000	min-1	Grease lubrication
--------	-------	-------	--------------------

#### Abutment and Fillet Dimensions

da (min.)	37	mm	Diameter of shaft abutment
da (max.)	37	mm	Diameter of shaft abutment
Da (max.)	45	mm	Diameter of housing abutment
ra (max.)	0.3	mm	Radius of shaft or housing fillet

#### Calculation factors

fo	16.7		Factor
----	------	--	--------

#### Additional information

z	20		Number of Balls
Dw	3.5	mm	Ball Diameter

#### Mass

Mass approx.	0.027	kg	Mass approx.
--------------	-------	----	--------------

