

Wiha SYSTEM 6.

The compact allrounder.

SYSTEM 6 sets.



281 T11 SYSTEM 6 reversible blades set, 11 pcs.
Slotted/ Phillips/ Pozidriv/ TORX®/ hex/ ball end hex.
 Blade: High quality chrome-vanadium-molybdenum steel, through hardened, chrome-plated.
 Colour-coded Wiha ChromTop® tips.
 Blade length is adjustable from 42 - 114 mm.
 Handle: SYSTEM 6 SoftFinish®-telescopic handle.
 ClickStop ball clamp guarantees a secure hold and rapid blade exchange.
 Extra: Robust roll-up bag allows space-saving storage of tools.

Order-No.	Series		
03591 4	281 T11	1	
	284	SYSTEM 6 SoftFinish®-telescopic handle	
⓪	⓪ 284	4.0 - 6.0	5.5 - 6.5
⊕	⊕ 284	PH1 - PH2	
⊕	⊕ 284	PZ1 - PZ2	
⊛	⊛ 284	T10 - T15	T20 - T25 T30 - T40
●	● 284	4 - 4	5 - 5 6 - 6

SYSTEM 6 sets.



U106 T8 SYSTEM 6 nut driver set, 8 pcs.
Nut driver.
 Blade: Chrome-vanadium-molybdenum steel, through-hardened, electro-plated.
 Adjustable blade lengths.
 Handle: SYSTEM 6 SoftFinish®-telescopic handle.
 ClickStop ball clamp guarantees secure hold and a quick nut driver change.
 Extra: Robust roll-up bag allows space-saving storage of tools.

Order-No.	Series		
27712 3	U106 T8	1	
	284	SYSTEM 6 SoftFinish®-telescopic handle	
⓪	⓪	5.0	5.5 6.0 7.0
		8.0	10.0 13.0



U106 T12 SYSTEM 6 nut driver set, 12 pcs.
Nut driver.
 Blade: Chrome-vanadium-molybdenum steel, through-hardened, electro-plated.
 Adjustable blade lengths.
 Handle: SYSTEM 6 SoftFinish®-telescopic handle.
 ClickStop ball clamp guarantees secure hold and a quick nut driver change.
 Extra: Robust roll-up bag allows space-saving storage of tools.

Order-No.	Series		
27713 0	U106 T12	1	
	284	SYSTEM 6 SoftFinish®-telescopic handle	
⓪	⓪	4.0	4.5 5.0 5.5
		6.0	7.0 8.0 9.0
		10.0	11.0 13.0

Wiha SYSTEM 4.

Ideal for precision work.



Colour-coded ChromTop® tips for maximum clarity.

Due to its versatility and quality the Wiha **SYSTEM 4** is a reversible blade system that convinces every user. Either for slotted, Phillips, TORX® or hex screws, the wide product range provides the right model for every application. All reversible blades are made of high-quality CVM-steel, through hardened and chrome-plated, which provides an extra long service-life.

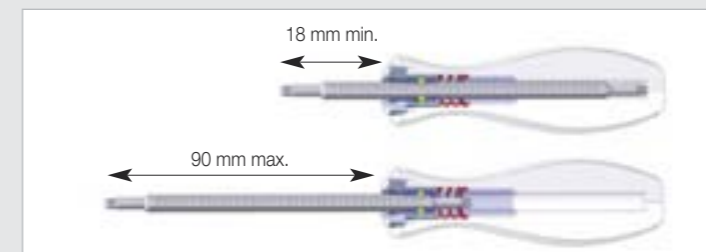
The Wiha ChromTop® tips guarantee a perfect fit every time. Just choose from the SYSTEM 4 products for the relevant tool. Following handles are offered.

- The ergonomic **SoftFinish® telescopic handle.**
 - The dissipative **SoftFinish® ESD handle.**
- Each with adjustable blade lengths from 18 – 90 mm.

We offer SYSTEM 4 sets in compact roll-up pouches, rugged metal and easy access plastic boxes.



Convincing variety and quality. SYSTEM 4 – a real multi-tasker.



With the SoftFinish® telescopic handle, the blade length can be adjusted from 18 – 90 mm.

Wiha SYSTEM 4.

- Flexible, versatile reversible precision blade system
- Sets in compact roll-up pouches, rugged metal- or easy access plastic-boxes
- Ergonomic handles for almost every application
- Colour-coded blades made of high-quality, tough chrome-vanadium-molybdenum steel, through-hardened, chrome-plated
- Wiha ChromTop® tips ensure a perfect fit every time

Wiha SYSTEM 4.

Ideal for precision work.

SYSTEM 4 handles.



2691 SYSTEM 4 SoftFinish®-telescopic handle.

Ergonomic multi-component handle with roll-off protection.

Handle: With 4 mm hex retainer for all SYSTEM 4 blades.
Enables adjustable blade lengths from 18 - 90 mm.
ClickStop ball clamp guarantees a secure hold and rapid blade exchange.

Application: Ideal for all precision work in the fields of electronics and mechanics.

Order-No.	Ø	—	+	—
30373 0	4.0	105	23	10



2691ESD SYSTEM 4 SoftFinish®-telescopic ESD handle.

Dissipative handle, ESD-safe.

Handle: Ergonomic multi-component handle with roll-off protection.
With 4 mm hex retainer for all SYSTEM 4 blades.
Enables adjustable blade lengths from 18 - 90 mm.
ClickStop ball clamp guarantees a secure hold and rapid blade exchange.
Surface resistance 10⁶ - 10⁹ ohms.

Standards: IEC 61340-5-1.
Application: For working on electrostatically sensitive components.

Order-No.	Ø	—	+	—
31498 9	4.0	105	23	10

Safety Notice:

Wiha ESD screwdrivers are non-insulated, therefore not suitable for working on live parts.

SYSTEM 4 reversible blades.



269 SYSTEM 4 slotted reversible blade.
Blade: High quality chrome-vanadium-molybdenum steel, through hardened, chrome-plated.
Colour-coded Wiha ChromTop® tips.

Order-No.	①	①	⊖	⊖	↔	●	—
00576 4	1.5	3.0	0.25	0.5	120	4.0	5
00577 1	2.0	3.5	0.4	0.6	120	4.0	5
00578 8	2.5	4.0	0.4	0.8	120	4.0	5



269 SYSTEM 4 slotted Phillips reversible blade.
Blade: High quality chrome-vanadium-molybdenum steel, through hardened, chrome-plated.
Colour-coded Wiha ChromTop® tips.

Order-No.	①	+	⊖	↔	●	—
00601 3	2.0	PH00	0.4	120	4.0	5
00602 0	3.0	PH0	0.5	120	4.0	5
00603 7	4.0	PH1	0.8	120	4.0	5



269 SYSTEM 4 Phillips reversible blade.
Blade: High quality chrome-vanadium-molybdenum steel, through hardened, chrome-plated.
Colour-coded Wiha ChromTop® tips.

Order-No.	+	+	↔	●	—
00579 5	PH000	PH00	120	4.0	5
00580 1	PH0	PH1	120	4.0	5



269 SYSTEM 4 Pozidriv reversible blade.
Blade: High quality chrome-vanadium-molybdenum steel, through hardened, chrome-plated.
Colour-coded Wiha ChromTop® tips.

Order-No.	+	+	↔	●	—
03186 2	PZ0	PZ1	120	4.0	5

SYSTEM 4 reversible blades.



269 SYSTEM 4 TORX® reversible blade.
Blade: High quality chrome-vanadium-molybdenum steel, through hardened, chrome-plated.
Colour-coded Wiha ChromTop® tips.

Order-No.	⊛	⊛	↔	●	—
26122 1	T1	T2	120	4.0	5
26123 8	T3	T4	120	4.0	5
26124 5	T5	T6	120	4.0	5
00597 9	T6	T8	120	4.0	5
00598 6	T7	T9	120	4.0	5
00599 3	T10	T15	120	4.0	5
00600 6	T15	T20	120	4.0	5



269 SYSTEM 4 combined ball end hex - hex reversible blade.
Blade: High quality chrome-vanadium-molybdenum steel, through hardened, chrome-plated.
Colour-coded Wiha ChromTop® tips.

Extra: The ball end enables the user to work at angles up to 25°.

Order-No.	●	●	↔	●	—
00582 5	1.3	1.3	120	4.0	5
00583 2	1.5	1.5	120	4.0	5
00584 9	2	2	120	4.0	5
00585 6	2.5	2.5	120	4.0	5
00586 3	3	3	120	4.0	5
00587 0	4	4	120	4.0	5

SYSTEM 4 reversible blades.



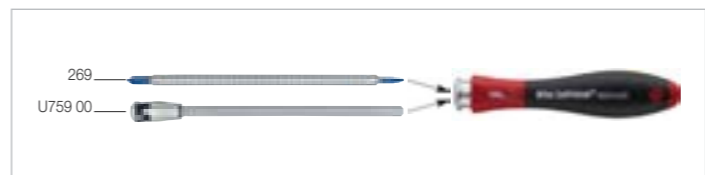
269 SYSTEM 4 nut driver.
For hex nuts.
Blade: High quality chrome-vanadium-molybdenum steel, through hardened, chrome-plated.
Application: For hex nuts.

Order-No.	○	○	↔	●	—
00588 7	1.5	1.8	120	4.0	5
00589 4	2	2.5	120	4.0	5
00590 0	3	-	120	4.0	5
00591 7	3.2	-	120	4.0	5
00592 4	3.5	-	120	4.0	5
00593 1	4	-	120	4.0	5
00594 8	4.5	-	120	4.0	5
00595 5	5	-	120	4.0	5
00596 2	5.5	-	120	4.0	5



U759 00 SYSTEM 4 bit holder.
Suitable for C 4 (4 mm) bits.
Blade: Chrome-vanadium steel, through hardened, electro-plated.

Order-No.	○	—	●	⊛	—
09195 8	4.0	135	4.0	9	1



*Practical and compact:
select the appropriate blade –
insert it into the handle –
that's all there is to it!*

Wiha SYSTEM 4.

Ideal for precision work.

SYSTEM 4 sets in pouches.



269 T4 SYSTEM 4 reversible blades set, 4 pcs.
Slotted/ Phillips.

Blade: High quality chrome-vanadium-molybdenum steel, through hardened, chrome-plated. Colour-coded Wiha ChromTop® tips. Blade length is adjustable from 18 - 90 mm.

Handle: SYSTEM 4 SoftFinish®-telescopic handle. ClickStop ball clamp guarantees a secure hold and rapid blade exchange.

Extra: Robust roll-up bag allows space-saving storage of tools.

Order-No.	Series	
00613 6	269 T4	10
	2691	SYSTEM 4 SoftFinish®-telescopic handle
① ⊕	269	2.0 - PH00 3.0 - PH0 4.0 - PH1

SYSTEM 4 sets in pouches.



269 T11 SYSTEM 4 reversible blades set, 11 pcs.
Slotted/ Phillips/ hex/ ball end hex.

Blade: High quality chrome-vanadium-molybdenum steel, through hardened, chrome-plated. Colour-coded Wiha ChromTop® tips. Blade length is adjustable from 18 - 90 mm.

Handle: SYSTEM 4 SoftFinish®-telescopic handle. ClickStop ball clamp guarantees a secure hold and rapid blade exchange.

Extra: Robust roll-up bag allows space-saving storage of tools.

Order-No.	Series	
00610 5	269 T11	5
	2691	SYSTEM 4 SoftFinish®-telescopic handle
① ①	269	1.5 - 3.0 2.0 - 3.5 2.5 - 4.0
⊕ ⊕	269	PH000 - PH00 PH0 - PH1
● ●	269	1.3 - 1.3 1.5 - 1.5 2 - 2
		2.5 - 2.5 3 - 3

SYSTEM 4 sets in pouches.



269 T11 01 SYSTEM 4 reversible blades set, 11 pcs.
Slotted/ Phillips/ TORX®/ hex/ ball end hex.

Blade: High quality chrome-vanadium-molybdenum steel, through hardened, chrome-plated. Colour-coded Wiha ChromTop® tips. Blade length is adjustable from 18 - 90 mm.

Handle: SYSTEM 4 SoftFinish®-telescopic handle. ClickStop ball clamp guarantees a secure hold and rapid blade exchange.

Extra: Robust roll-up bag allows space-saving storage of tools.

Order-No.	Series	
27820 5	269 T11 01	5
	2691	SYSTEM 4 SoftFinish®-telescopic handle
① ①	269	1.5 - 3.0 2.0 - 3.5 2.5 - 4.0
⊕ ⊕	269	PH000 - PH00 PH0 - PH1
⊛ ⊛	269	T6 - T8 T7 - T9
● ●	269	1.5 - 1.5 2 - 2 2.5 - 2.5

SYSTEM 4 sets in plastic boxes.



269 EB53 SYSTEM 4 reversible blades set, 5 pcs.
Slotted/ Phillips.

Blade: High quality chrome-vanadium-molybdenum steel, through hardened, chrome-plated. Colour-coded Wiha ChromTop® tips. Blade length is adjustable from 18 - 90 mm.

Handle: SYSTEM 4 SoftFinish®-telescopic handle. ClickStop ball clamp guarantees a secure hold and rapid blade exchange.

Application: Ideal for all precision work.

Extra: Delivery in a rugged, arrangeable plastic box.

Order-No.	Series	
32317 2	269 EB53	5
	2691	SYSTEM 4 SoftFinish®-telescopic handle
① ①	269	1.5 - 3.0 2.0 - 3.5
⊕ ⊕	269	PH000 - PH00 PH0 - PH1



269 T6 SYSTEM 4 reversible blades set, 6 pcs.
Slotted/ Phillips.

Blade: High quality chrome-vanadium-molybdenum steel, through hardened, chrome-plated. Colour-coded Wiha ChromTop® tips. Blade length is adjustable from 18 - 90 mm.

Handle: SYSTEM 4 SoftFinish®-telescopic handle. ClickStop ball clamp guarantees a secure hold and rapid blade exchange.

Extra: Robust roll-up bag allows space-saving storage of tools.

Order-No.	Series	
00616 7	269 T6	5
	2691	SYSTEM 4 SoftFinish®-telescopic handle
① ①	269	1.5 - 3.0 2.0 - 3.5 2.5 - 4.0
⊕ ⊕	269	PH000 - PH00 PH0 - PH1



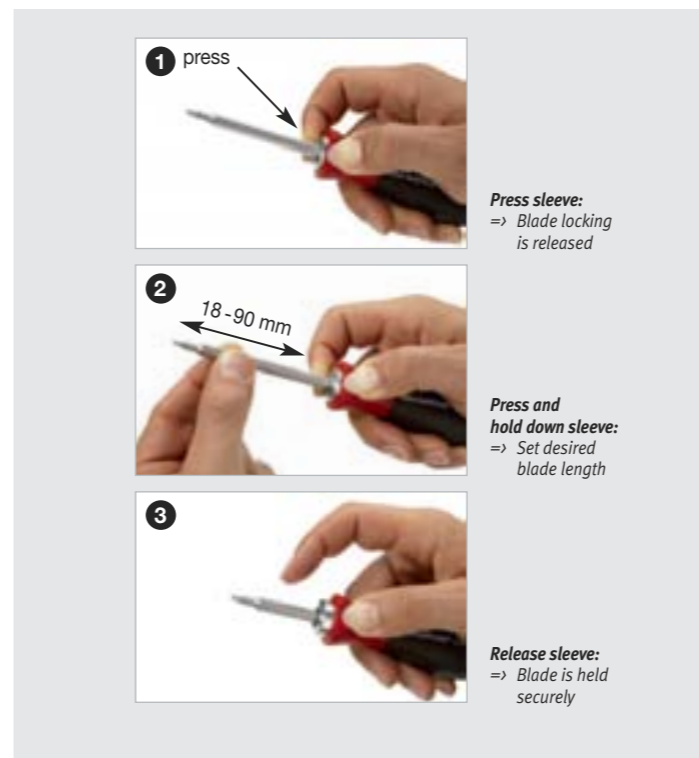
269 T6 01 SYSTEM 4 reversible blades set, 6 pcs.
Phillips/ TORX®.

Blade: High quality chrome-vanadium-molybdenum steel, through hardened, chrome-plated. Colour-coded Wiha ChromTop® tips. Blade length is adjustable from 18 - 90 mm.

Handle: SYSTEM 4 SoftFinish®-telescopic handle. ClickStop ball clamp guarantees a secure hold and rapid blade exchange.

Extra: Robust roll-up bag allows space-saving storage of tools.

Order-No.	Series	
26121 4	269 T6 01	5
	2691	SYSTEM 4 SoftFinish®-telescopic handle
⊕ ⊕	269	PH000 - PH00 PH0 - PH1
⊛ ⊛	269	T3 - T4 T5 - T6 T8 - T10



269 EB95 SYSTEM 4 reversible blades set, 9 pcs.
Slotted/ Phillips/ TORX®.

Blade: High quality chrome-vanadium-molybdenum steel, through hardened, chrome-plated. Colour-coded Wiha ChromTop® tips. Blade length is adjustable from 18 - 90 mm.

Handle: SYSTEM 4 SoftFinish®-telescopic handle. ClickStop ball clamp guarantees a secure hold and rapid blade exchange.

Application: Ideal for all precision work.

Extra: Delivery in a rugged, arrangeable plastic box.

Order-No.	Series	
32316 5	269 EB95	5
	2691	SYSTEM 4 SoftFinish®-telescopic handle
① ①	269	1.5 - 3.0 2.0 - 3.5 2.5 - 4.0
⊕ ⊕	269	PH000 - PH00 PH0 - PH1
⊛ ⊛	269	T6 - T8 T7 - T9 T10 - T15