

Main Features

- Adaptation of different connections
- Stainless steel
- Version with swiveling nut for easy positioning of the measuring instrument and installation of differential pressure gauges on manifolds

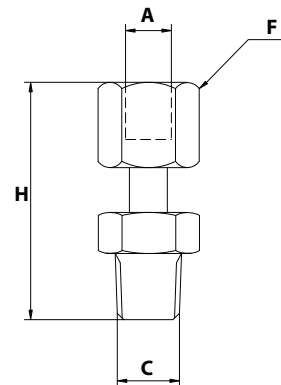
Applications

- Oil & Gas / Chemical
- Water & Waste water
- Energy
- Machinery

Ordering details ARIN (with swiveling nut)

		-	x	x	xx
Model	Intermediate connectors	ARIN			
Material	Stainless steel		2		
Process connection	1/2 NPT			6	
Instrument connection	G 1/4 swiveling nut				F6
	G 1/2 swiveling nut				F5
	1/2 NPT swiveling nut				F8

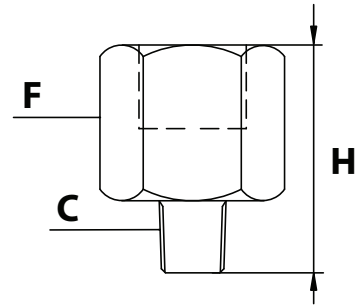
Dimension (mm)



	Dimensions				Material	Max. pressure (bar)		
	A	C	F	H		20 °C	100 °C	400 °C
ARIN-26F5	G 1/2	1/2 NPT	○ 27	75	1.4404 (316L)	400	400	250
ARIN-26F6	G 1/4	1/2 NPT	○ 27	62.5	1.4404 (316L)	250	250	150
ARIN-26F8	1/2 NPT	1/2 NPT	○ 27	79	1.4571 (316Ti)	400	400	200

Ordering details ARIN (versions in one piece)

	-	x	x	xx
Model				
Intermediate connectors	ARIN			
Material				
Brass		L		
Stainless steel		2		
Process connection				
G 1/8			1	
G 1/4			2	
G 3/8			J	
G 1/2			3	
1/4 NPT			5	
1/2 NPT			6	
M10 x 100			7	
G 1/4 female			H	
G 1/2 female			L	
1/4 NPT female			8	
1/2 NPT female			N	
M10 x 100 female			P	
Instrument connection ⁽²⁾				
G 1/4 female				0H
G 1/2 female				0L
1/8 NPT female				CF
1/4 NPT female				08
1/2 NPT female				0N



Dimensions for reference only ⁽¹⁾

	C	F	H
M10 x 100		∅27	40
G 1/4		∅27	45
1/4 NPT		∅27	40
G 3/8		∅27	43
1/2 NPT		∅27	45

⁽¹⁾ Valid for the mentioned female / male versions. Others on request.

⁽²⁾ Connectors with male thread on both sides on request.
Example: ARIN-2606 for 1/2 NPT - 1/2 NPT.