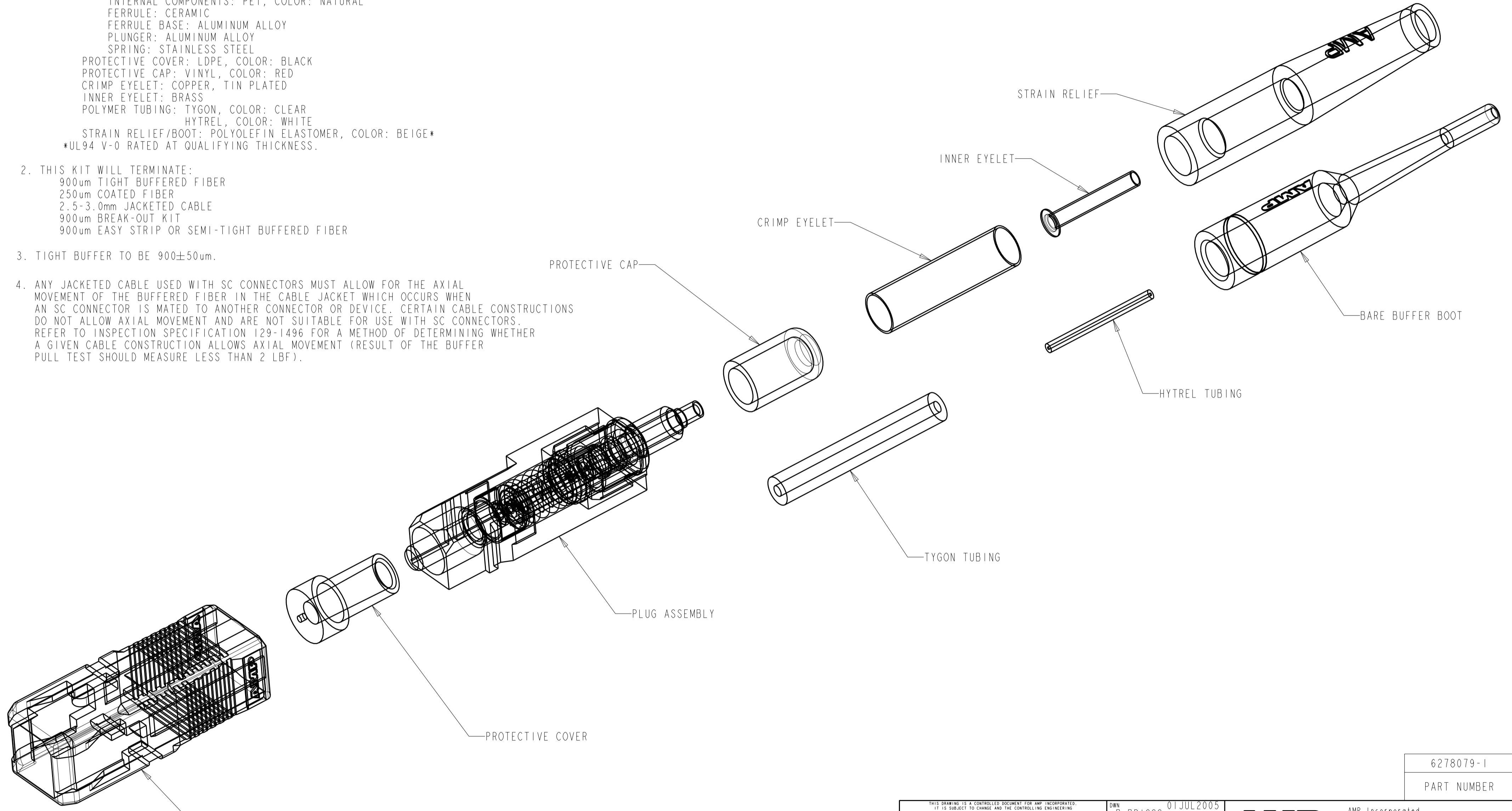


THIS DRAWING IS UNPUBLISHED. RELEASED FOR PUBLICATION .19  
 © COPYRIGHT 19 BY AMP INCORPORATED. ALL RIGHTS RESERVED.

LOC	DIST	REVISIONS			
F	LTR	DESCRIPTION	DATE	DWN	APVD
CE	00	A	RELEASE TO ACTIVE	08JUN2006	BB LS

- MATERIAL:**
- CONNECTOR HOUSING: POLYESTER PBT, COLOR: BEIGE\*
  - PLUG ASSEMBLY:
    - PLUG BODY: PAS, COLOR: BEIGE\*
    - INTERNAL BODY: BRASS, NICKEL PLATED
    - INTERNAL COMPONENTS: PEI, COLOR: NATURAL
    - FERRULE: CERAMIC
    - FERRULE BASE: ALUMINUM ALLOY
    - PLUNGER: ALUMINUM ALLOY
    - SPRING: STAINLESS STEEL
  - PROTECTIVE COVER: LDPE, COLOR: BLACK
  - PROTECTIVE CAP: VINYL, COLOR: RED
  - CRIMP EYELET: COPPER, TIN PLATED
  - INNER EYELET: BRASS
  - POLYMER TUBING: TYGON, COLOR: CLEAR  
HYTREL, COLOR: WHITE
  - STRAIN RELIEF/BOOT: POLYOLEFIN ELASTOMER, COLOR: BEIGE\*
- \*UL94 V-0 RATED AT QUALIFYING THICKNESS.

- THIS KIT WILL TERMINATE:
  - 900um TIGHT BUFFERED FIBER
  - 250um COATED FIBER
  - 2.5-3.0mm JACKETED CABLE
  - 900um BREAK-OUT KIT
  - 900um EASY STRIP OR SEMI-TIGHT BUFFERED FIBER
- TIGHT BUFFER TO BE  $900 \pm 50 \mu\text{m}$ .
- ANY JACKETED CABLE USED WITH SC CONNECTORS MUST ALLOW FOR THE AXIAL MOVEMENT OF THE BUFFERED FIBER IN THE CABLE JACKET WHICH OCCURS WHEN AN SC CONNECTOR IS MATED TO ANOTHER CONNECTOR OR DEVICE. CERTAIN CABLE CONSTRUCTIONS DO NOT ALLOW AXIAL MOVEMENT AND ARE NOT SUITABLE FOR USE WITH SC CONNECTORS. REFER TO INSPECTION SPECIFICATION 129-1496 FOR A METHOD OF DETERMINING WHETHER A GIVEN CABLE CONSTRUCTION ALLOWS AXIAL MOVEMENT (RESULT OF THE BUFFER PULL TEST SHOULD MEASURE LESS THAN 2 LBF).



6278079-1  
PART NUMBER

<small>THIS DRAWING IS A CONTROLLED DOCUMENT FOR AMP INCORPORATED. IT IS SUBJECT TO CHANGE AND THE CONTROLLING ENGINEERING ORGANIZATION SHOULD BE CONTACTED FOR THE LATEST REVISION.</small>		DWN B. BRIGGS 01 JUL 2005 CHK L. SAUERWEIN 01 JUL 2005 APVD S. BUCHTER 01 JUL 2005	<b>AMP</b> AMP Incorporated Harrisburg, PA 17105-3608
DIMENSIONS: mm [ INCHES ]	TOLERANCES UNLESS OTHERWISE SPECIFIED: 0 PLC ±- 1 PLC ±0.1 2 PLC ±0.02 3 PLC ±0.005 4 PLC ±0.0005 ANGLES ±- FINISH -	PRODUCT SPEC - APPLICATION SPEC - WEIGHT -	NAME CONNECTOR KIT, LightCrimp Plus SC 50/125um, MM SIZE A2 CAGE CODE 00779 DRAWING NO. C-6278079 RESTRICTED TO -
MATERIAL		CUSTOMER DRAWING SCALE 4:1 SHEET 1 OF 1 REV A	