



725-5507  
725-5519  
725-5522

INCOMING  
TP SUPPLY

2

1 WIRING DIAGRAM FOR  
3 PHASE SUPPLY WITH  
400V COIL

3

KEY

CONTROL WIRING  
ALREADY INCLUDED

4

CONNECTIONS TO BE  
MADE BY INSTALLER

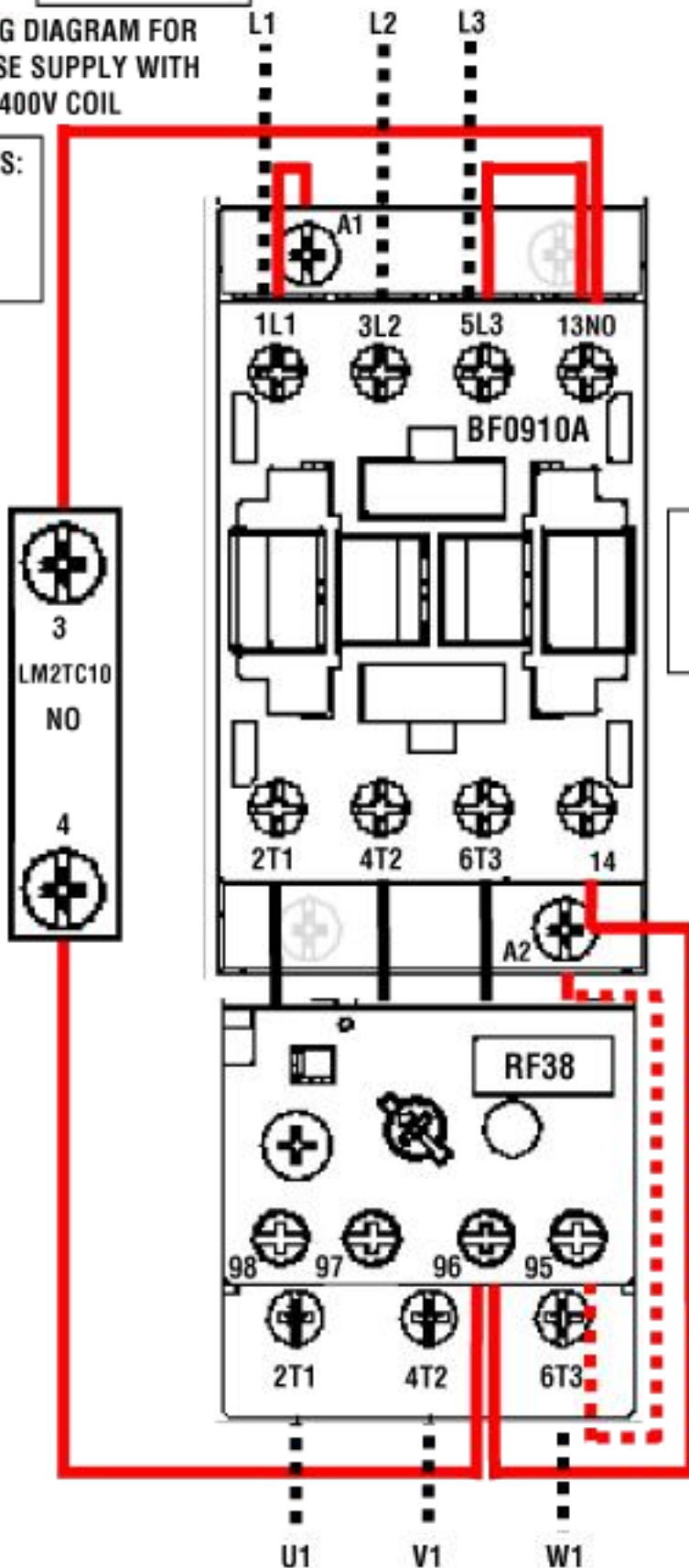
\*\*RF38 INTERNAL  
95-A2 CONNECTION

5

WARNING

TO PREVENT RISK OF DAMAGE OR  
SAFETY HAZARDS, THIS EQUIPMENT  
SHOULD ONLY BE INSTALLED BY  
SUITABLY QUALIFIED OR COMPETENT  
PERSONS AND IN ACCORDANCE WITH  
ALL APPLICABLE ELECTRICAL  
REGULATIONS

MFRS PART NOS:  
DOLS5.5230  
DOLS7.5230  
DOLS11230



BF0910A400/  
BF1810A400/  
BF2510A400  
CONTACTOR

RF38 THERMAL RELAY  
(TO BE ORDERED  
SEPARATELY)

\*\*INSTALLER TO CONNECT  
COPPER 4TH PIN TO LOWER  
A2 ON CONTACTOR  
& FLYING LEADS TO 96  
ONLY

DO NOT  
CONNECT ANY WIRES TO 95  
BUT ENSURE 95 & A2  
TERMINALS ARE TIGHTENED

6

7

START  
CONTACT

3  
LM2TC10  
NO

4

10 OUTGOING SUPPLY TO  
3PH MOTOR