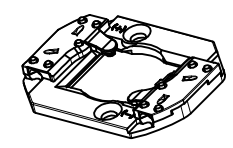
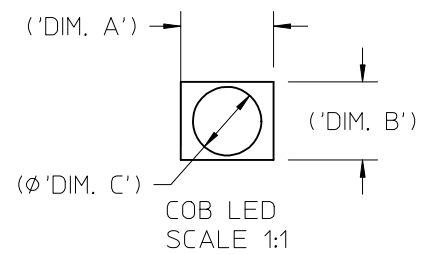
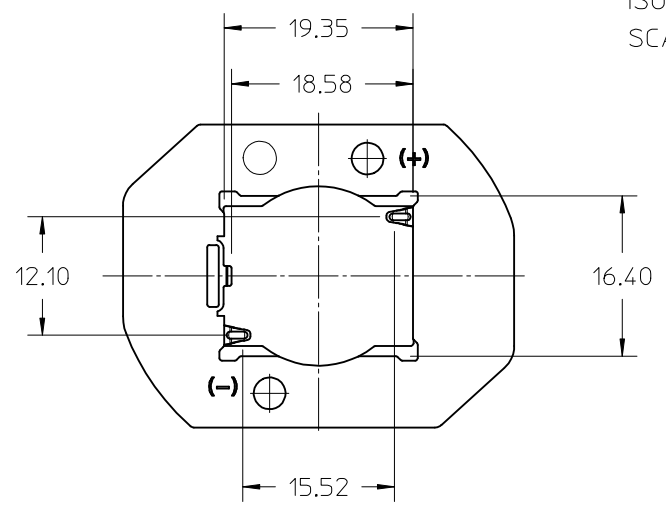
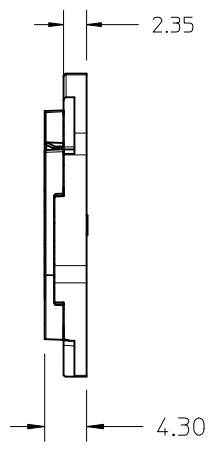
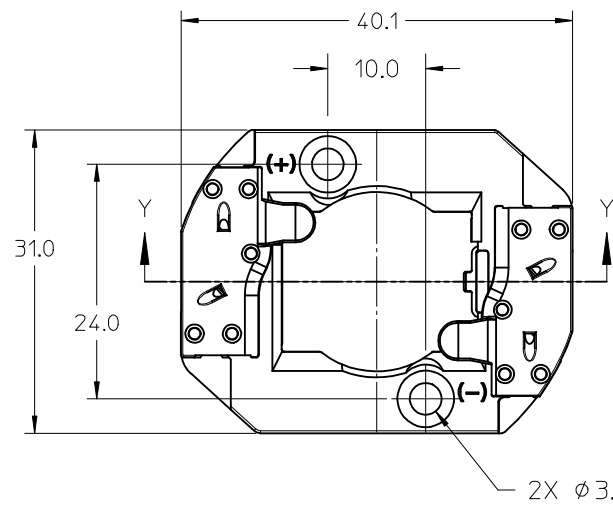


PART NUMBER	DESCRIPTION	MATERIAL	COLOR
180580-0001	COB LED HOLDER ASSEMBLY - NYLON	POLYAMIDE, GLASS FILLED	NATURAL
180580-0101	COB LED HOLDER ASSEMBLY - PBT	POLYESTER, GLASS FILLED	WHITE



ISO VIEW
SCALE 1:1



- 1) MATERIALS: HOUSIG AND CAPS: SEE CHART
- 2) WIRE TRAP TERMINALS: COPPER ALLOY
 - a. FINISH: LED CONTACT: GOLD OVER NICKEL, WIRE TRAP: TIN OVER NICKEL
- 3) THIS PRODUCT IS ELV AND ROHS COMPLIANT
- 4) APPLICABLE WIRE GAUGE - 18, 20, OR 22 AWG
 - a. SOLID WIRE IS PREFERRED
 - b. IF STRANDED WIRE IS USED, PRE-TINNED IS RECOMMENDED
 - c. 1 cm +2.00/-0.00 STRIP LENGTH IS RECOMMENDED
- 5) MOUNT HOLDER USING M3 OR 4-40 SCREWS (2), TORQUE: 0.2 MIN TO 0.4 MAX NEWTON METERS
- 6) UL RECOGNITION TO UL496; c-UL RECOGNITION TO CSA-C22.2 NO. 43 (2008) - RATED 600V UL FILE NUMBER: E345583
- 7) DIMENSIONS IN PARENTHESES (XX.XX) ARE FOR REFERENCE ONLY

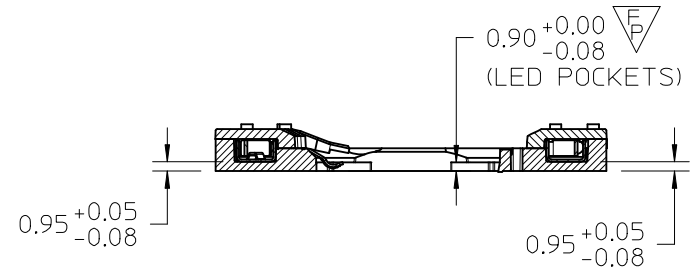
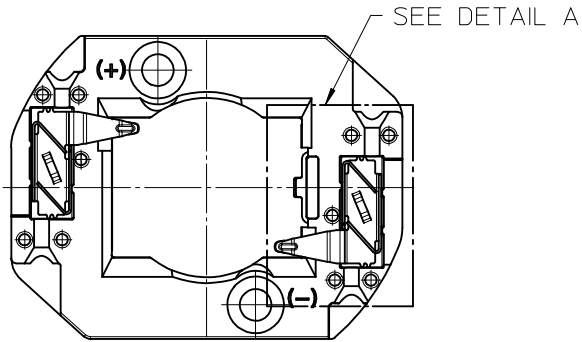
COB MFG.	TYPE	DIM. 'A'	DIM. 'B'	THK	DIM. 'C' MAX.
NICHIA	L SERIES	19.0	16.0	1.0	14.0
LUMILEDS	LUXEON 1202/1203	19.0	16.0	1.0	11.0

RELEASED EC NO: SSL2014-0120 TDR:WINGMEYER 2014/03/16 CHKD:GMEYER 2014/05/07 APPR:DMCGOWAN 2014/05/13 REV	QUALITY SYMBOLS ▽/0 ▽/0 ▽/0	GENERAL TOLERANCES (UNLESS SPECIFIED) <table border="1"> <thead> <tr> <th></th> <th>mm</th> <th>INCH</th> </tr> </thead> <tbody> <tr> <td>4 PLACES</td> <td>± ---</td> <td>± ---</td> </tr> <tr> <td>3 PLACES</td> <td>± ---</td> <td>± ---</td> </tr> <tr> <td>2 PLACES</td> <td>± 0.13</td> <td>± ---</td> </tr> <tr> <td>1 PLACE</td> <td>± 0.25</td> <td>± ---</td> </tr> <tr> <td>0 PLACE</td> <td>± ---</td> <td>± ---</td> </tr> </tbody> </table>		mm	INCH	4 PLACES	± ---	± ---	3 PLACES	± ---	± ---	2 PLACES	± 0.13	± ---	1 PLACE	± 0.25	± ---	0 PLACE	± ---	± ---	DIMENSION STYLE MM ONLY	SCALE 2:1	DESIGN UNITS METRIC	THIRD ANGLE PROJECTION
		mm	INCH																					
	4 PLACES	± ---	± ---																					
	3 PLACES	± ---	± ---																					
2 PLACES	± 0.13	± ---																						
1 PLACE	± 0.25	± ---																						
0 PLACE	± ---	± ---																						
		DRAWN BY MDEVITO	DATE 2012/09/06	TITLE COB LED HOLDER 19.0MM X 16.0MM RECTANGULAR COB																				
		CHECKED BY CCARRANZA	DATE 2012/09/06	molex																				
		APPROVED BY DMCGOWAN	DATE 2012/09/13	MATERIAL NO. SEE CHART	DOCUMENT NO. SD-180580-001	SHEET NO. 1 OF 3																		

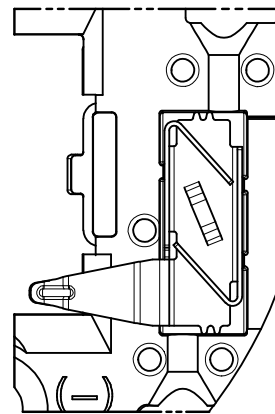
THIS DRAWING CONTAINS INFORMATION THAT IS PROPRIETARY TO MOLEX INCORPORATED AND SHOULD NOT BE USED WITHOUT WRITTEN PERMISSION

10 9 8 7 6 5 4 3 2 1

NOTE: WIRE TRAP CAPS ARE REMOVED FOR CLARITY



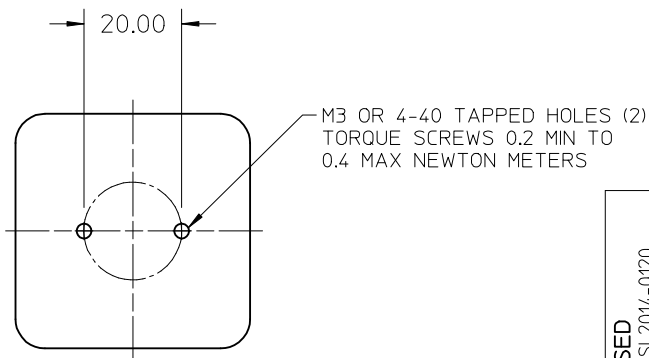
SECTION Y-Y



DETAIL A
Scale 4:1

VIEW OF TWO-WAY WIRE TRAP

WIRE TRAPS CAN ACCOMMODATE
18, 20, OR 22 GAUGE WIRE



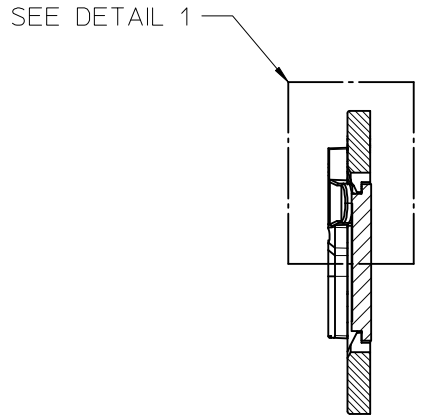
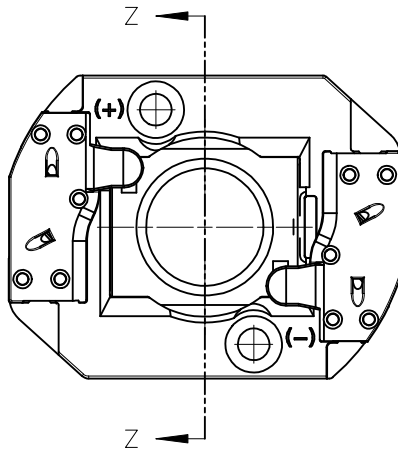
RECOMMENDED MOUNTING DIMENSIONS (NTS)

RELEASED EC NO: SSL2014-0120 TDR: DMCGMEYER 2014/03/16 CHKD: DMCGMEYER 2014/05/07 APPR: DMCGOWAN 2014/05/13	QUALITY SYMBOLS F/0 F/0 F/0	GENERAL TOLERANCES (UNLESS SPECIFIED)		DIMENSION STYLE MM ONLY		SCALE 2:1	DESIGN UNITS METRIC	THIRD ANGLE PROJECTION		
		4 PLACES ± --- ± ---	mm INCH	DRAWN BY MDEVITO	DATE 2012/09/06	TITLE COB LED HOLDER 19.0MM X 16.0MM RECTANGULAR COB				
		3 PLACES ± --- ± ---	2 PLACES ± 0.13 ± ---	CHECKED BY CCARRANZA	DATE 2012/09/06					
		1 PLACE ± 0.25 ± ---	0 PLACE ± --- ± ---	APPROVED BY DMCGOWAN	DATE 2012/09/13	MATERIAL NO. SEE CHART				
ANGULAR ± 1/2° DRAFT WHERE APPLICABLE MUST REMAIN WITHIN DIMENSIONS		DOCUMENT NO. SD-180580-001		SHEET NO. 2 OF 3						

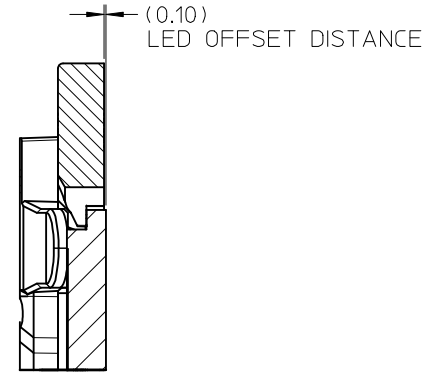
THIS DRAWING CONTAINS INFORMATION THAT IS PROPRIETARY TO MOLEX INCORPORATED AND SHOULD NOT BE USED WITHOUT WRITTEN PERMISSION

9 8 7 6 5 4 3 2 1

ILLUSTRATION OF HOLDER MATED WITH LED



SECTION Z-Z



DETAIL 1
SCALE 4:1

ENTER DESCRIPTION EC NO: SSL2014-0120 TDR: MWGMEYER 2014/03/16 CHKD: GWMEYER 2014/05/07 APPR: DMCGOWAN 2014/05/13	QUALITY SYMBOLS ▽/0 ▽/0 ▽/0	GENERAL TOLERANCES (UNLESS SPECIFIED)		DIMENSION STYLE MM ONLY		SCALE 2:1	DESIGN UNITS METRIC	THIRD ANGLE PROJECTION
		4 PLACES ± --- ± ---	DRAWN BY MDEVITO	DATE 2012/09/06	TITLE COB LED HOLDER 19.0MM X 16.0MM RECTANGULAR COB			
		3 PLACES ± --- ± ---	CHECKED BY CCARRANZA	DATE 2012/09/06				
		2 PLACES ± 0.13 ± ---	APPROVED BY DMCGOWAN	DATE 2012/09/13	MATERIAL NO.	DOCUMENT NO.	SHEET NO.	
1 PLACE ± 0.25 ± ---	ANGULAR ± 1/2° DRAFT WHERE APPLICABLE MUST REMAIN WITHIN DIMENSIONS		SEE CHART	SD-180580-001	3 OF 3			
0 PLACE ± --- ± ---	THIS DRAWING CONTAINS INFORMATION THAT IS PROPRIETARY TO MOLEX INCORPORATED AND SHOULD NOT BE USED WITHOUT WRITTEN PERMISSION							