

Datasheet

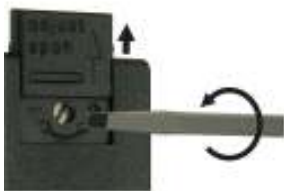
Flow Switch

paddle

GENERAL CHARACTERISTICS

Instruments operate by a spring-supported paddel with magnetic triggering of a micro switch.

- * good repeatability
- * low pressure loss
- * dirt resistant
- * hermetic separation of electrical and hydraulic components
- * high switch capability



Female thread G3/8 to G2 brass/stainless steel



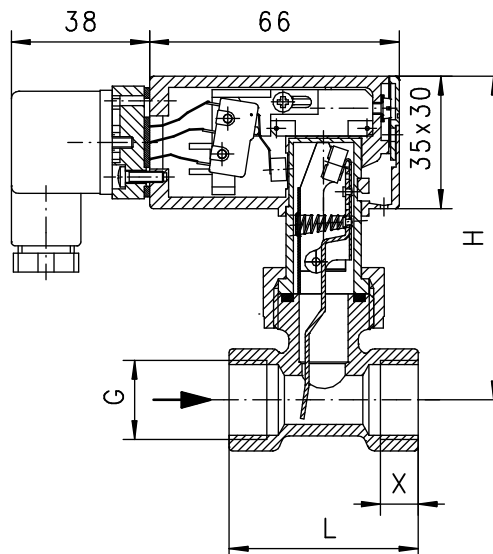
U

TECHNICAL DATA

	G	Type	PN bar	Qmax. recom. l/min H ₂ O	adjustable range l/min H ₂ O	H mm	L mm	X mm	weight kg
brass	G 3/8	6134216	25	10	4 - 5.5	87	50	10	0.35
	G 1/2	6134238	25	20	5.5 - 7	87	50	10	0.35
	G 3/4	6134222	25	40	7.5 - 10	88	50	12	0.35
	G 1	6134244	25	60	14 - 18	92	50	12	0.40
	G 1 1/4		25	80	22 - 30	96	50	12	0.55
	G 1 1/2		25	100	37 - 50	99	50	12	0.60
	G 2		25	150	67 - 93	108	50	12	1.00
stainless steel	G 1/2		25	10	4 - 5.5	87	50	10	0.40
	G 3/4		25	20	5.5 - 7	87	50	10	0.41
	G 1		25	40	7.5 - 10	88	50	12	0.35
	G 1 1/4		25	60	14 - 18	92	50	12	0.45
	G 1 1/2		25	80	22 - 30	96	50	12	0.55
	G 1 1/2		25	100	37 - 50	99	50	12	0.70
	G 2		25	150	67 - 93	108	50	12	1.00

Adjustable range is indicated for horizontally decreasing flow.

tolerance	±15% of full scale
media temperature	max. 110°C
average pressure loss	0.01bar at Qmax.
hysteresis	depending on switch value minimum 0.7 l/min.



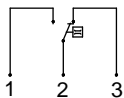
MATERIALS

	U
housing	brass Ms58 nickel plated
body	brass Ms58 nickel plated
paddle	stainless steel 1.4301 ; 1.4571
spring	stainless steel 1.4310
magnet	oxyd 300
seal	NBR

Flow Switch

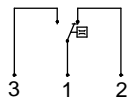
ELECTRICAL DATA

micro switch - wiring 0.371 change over
 250 V AC 5 A
 plug DIN 43650-A
 protection class IP 65

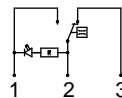


BASIC
 Programme options

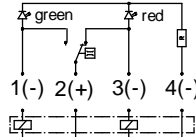
wiring 0.342



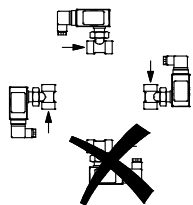
diode red
 wiring 0.208



diode red/green
 wiring 0.347



MOUNTING POSITION



Installation position may influence switch value.

METERING SUBSTANCES



water



gas/air



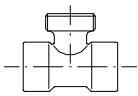
oil

N

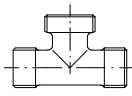
				basic type
				specification
-				nominal diameter
	10			DN 10 - G3/8
	15			DN 15 - G1/2
	20			DN 20 - G3/4
	25			DN 25 - G1
	32			DN 32 - G1 1/4
	40			DN 40 - G1 1/2
	50			DN 50 - G2
		G		female thread
		M		brass design
		K		stainless steel design
			055	4 - 5.5 l/min
			070	5.5 - 7 l/min
			100	7.5 - 10 l/min
			018	14 - 18 l/min
			300	22 - 30 l/min
			500	37 - 50 l/min
			930	67 - 93 l/min
Programme option				wiring 0.208 - diode red integrated in plug DIN 43650-A
BASIC				wiring 0.347 - diode red/green integrated in plug DIN 43650-A
				wiring 0.342
Special option				gold-plated micro switch 125 V AC / 30 V DC / 100mA
VARIO				setting / adjustable ranges for oil or gas
				contact for locking plug M12x1, 4-pole
				minimal flow range

I

connection types



female thread
 brass
 stainless steel



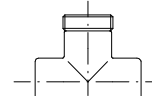
male thread
 brass
 POM



**welding, soldering
 glue socket**
 brass, stainless steel, PVC



solder fitting
 copper



glue fitting
 PVC