

Features

- Strong and durable nylon base and zinc plated steel threaded rod
- Integrated hex nut in threaded rod to adjust height
- 20 degrees of articulation
- Holes in base to bolt foot to floor

RS PRO Adjustable Levelling Foot With Bolt-Down Holes, Nylon Base, 80mm Diameter, M16x100mm Zinc Plated Steel Thread

RS Stock No.: 0285694



RS Professionally Approved Products bring to you professional quality parts across all product categories. Our product range has been tested by engineers and provides a comparable quality to the leading brands without paying a premium price.

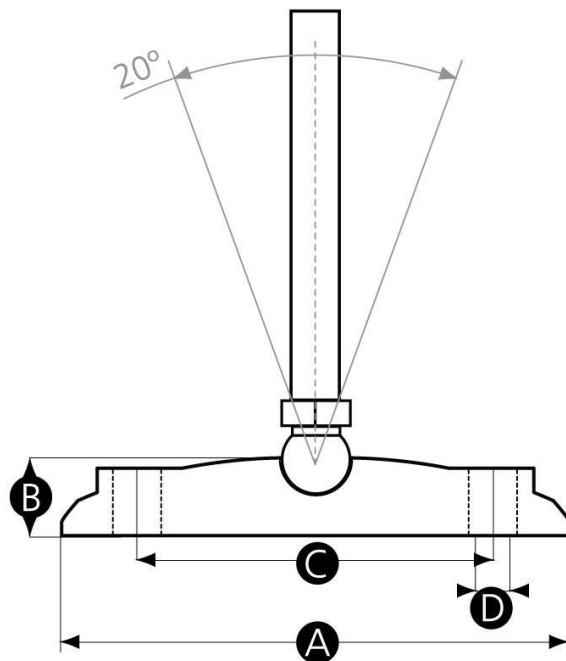
Product Description

A glass-reinforced nylon base and zinc plated steel threaded rod. Height adjustment is achieved by an integrated hex nut in the threaded rod. An industry standard 15mm ball and socket provides 20° of articulation from perpendicular. The glass reinforced plastic base is tough and lightweight, while the zinc plated rod offers sufficient corrosion resistance for most indoor applications. Integral holes in the base allow the base to be bolted to the floor for increased stability.

General Specifications

Diameter	80mm
Thread	M16x100mm
Material	Nylon and zinc plated steel
Colour	Black
Application	Various types of furniture, processing and packaging machinery and equipment, lathes, milling machines and conveyors

A	80
B	29
C	18
D	54
E	9
Thread size	M16
Thread length	100
Maximum load	900kg



Similar Products

Stock No.	Brand	Product Name	Diameter	Thread size
0285688	RS PRO	Nylon Adjustable foot	60mm	M8x80mm
0285689	RS PRO	Nylon Adjustable foot	60mm	M10x70mm
0285690	RS PRO	Nylon Adjustable foot	60mm	M10x125mm
0285691	RS PRO	Nylon Adjustable foot	80mm	M12x100mm
0285693	RS PRO	Nylon Adjustable foot	80mm	M12x150mm
0285694	RS PRO	Nylon Adjustable foot	80mm	M16x100mm
0285695	RS PRO	Nylon Adjustable foot	80mm	M16x150mm
0285697	RS PRO	Nylon Adjustable foot	100mm	M16x100mm