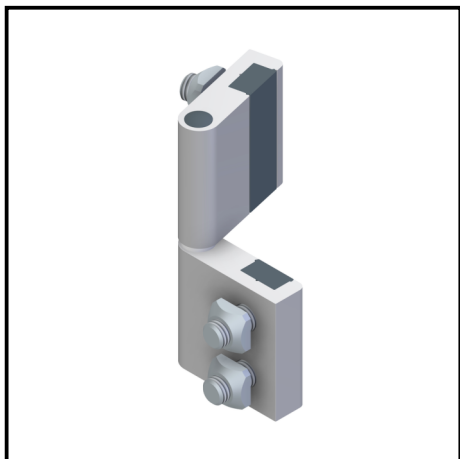


## HINGE 45 WITHOUT REAR BAR

Article Nr. 21.1096/2

See the product on the website →



### TECHN. DATA / ITEMS SUPPLIED

- Aluminium, anodized E6/EV1
- With stainless steel shaft
- With fastening material steel, zinc plated
- End caps
- Load capacity up to 400 N
- Weight = 0.149 kg/piece

### APPLICATIONS

- Detachable doors, hatches, moving parts on profiles 45
- Connection of profiles 45 at various angles
- Guard unit fixing angle
- If the hinges are arranged in the opposite direction, non-detachable and horizontally mounted structures can also be produced

### ASSEMBLY

- For fixing directly on surface elements or on profile surfaces we deliver hinge 45 without fixing element **part no.** [21.1096/2](#)
- 1: Lift removable
- 2: Arrangement is not detachable