

Features

- Maximum operating pressure is 12 bar.
- Operating temperature range -20°C to +100°C.
- Material: Brass / Steel / Aluminium with Nickel and Zinc plated Finish
- Single Shut Off (One side is with valve)
- DN5.5 ISO 4414
- ISO 6150-B-12
- Industrial Interchangeable 1/4"
- 2-Stage Safety
- Compatible with:
 - Industrial interchange 1/4"
 - Industrial interchange 1/4"
 - TST 024
 - PARKER - RECTUS 23
 - CEJN 310
 - HANSEN 3000
 - PARKER 20
 - ATLAS COPCO QIC 08
 - US-MIL-SPEC-C-4109

RS PRO Pneumatic Quick Connect Coupling

RS Stock No.: 0325462



RS PRO is the own brand of RS. The RS PRO Seal of Approval is your assurance of professional quality, a guarantee that every part is rigorously tested, inspected, and audited against demanding standards. Making RS PRO the Smart Choice for our customers.

Product Description

RS PRO Series 23S.06 Quick Connect Couplings

Pneumatic quick-connect coupling connectors are found across industry in pneumatic systems as diverse as robotic assembly lines and other equipment.

2-Stage safety coupling. Security is provided by pressing the button two times or by left-right sleeve twist. First press/twist releases the pressure inside the coupling and the second press/twist ejects the plug for disconnection.

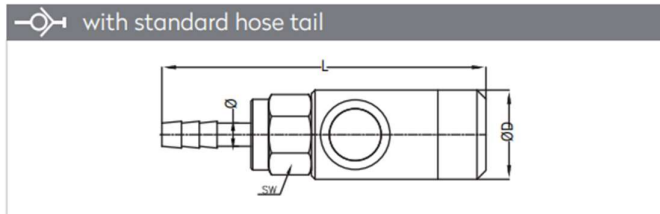
- Maximum operating pressure is 12 bar.
- Operating temperature range -20°C to +100°C.
- Material: Brass / Steel / Alluminium with Nickel and Zinc plated Finish
- Single Shut Off (One side is with valve)
- DN5.5 ISO 4414
- ISO 6150-B-12
- Industrial Interchangeable 1/4"
- 2-Stage Safety
- Compatible with:

Industrial interchange 1/4"	TST 024	PARKER - RECTUS 23
CEJN 310	HANSEN 3000	PARKER 20
ATLAS COPCO QIC 08	US-MIL-SPEC-C-4109	

Specifications

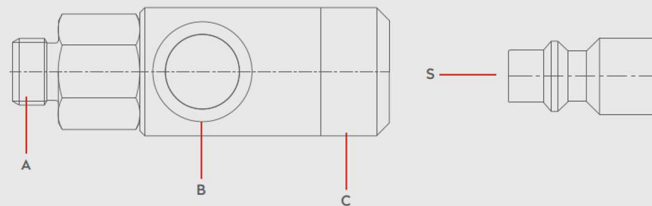
Manufacturer Series	023S.06
Coupling Type	Quick Connect Coupling Socket
Connection Standard	DN 5.5 ISO 4414; ISO 6150-B-12; Industrial Interchange 1/4"
Connection Standard Compatible With	Industrial interchange 1/4"; TST 024; PARKER - RECTUS 23; CEJN 310; HANSEN 3000; PARKER 20; ATLAS COPCO QIC 08; US-MIL-SPEC-C-4109
Minimum Operating Temperature	-20°C
Maximum Operating Temperature	+100°C
Maximum Operating Pressure	12bar
Flow	2-Stage ISO 4414
Flow Direction & Sealing	Self-sealing coupling
Material	Aluminium, Brass, Steel
Finish	Nickel, Zinc Plated
Connection Type	Hose Barb
Thread Size	N/A
Thread Standard	N/A
Thread Gender	N/A
Coupling Gender	Female
Threaded Connection	N/A
Seal material	Nitrile Rubber
Hose Barb Connection	10 mm

Specifications



Dimensions (mm)		
SW	L	ØD
20	83.3	26

Materials



Material Code

A = Brass Nickel Plated

B = Steel Zinc Plated

B = Aluminium

S = Steel Nickel Plated

Series 23.06 Quick Connect Couplings

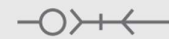


0 - 12 bar
(0-174 PSI)



-20° to + 100°C (NBR)
-4° to + 212°F

Shut Off
Type



OM 190 - 00580
OM 200 - 00800
OM 178 - 00925

2 - STAGE

ISO 4414

DN

5.5 mm