



**Part Number :** [1053131105](#)

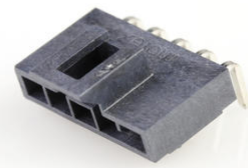
**Product Description :** Nano-Fit Right-Angle Header, Through Hole, 2.50mm Pitch, Single Row, 5 Circuits, Tin (Sn) Plating, Black, Glow-Wire Capable, Tray

**Series Number :** 105313

**Status :** Active

**Product Category :** PCB Headers and Receptacles

**Packaging Alternative :** [1053131505](#) (Embossed Tape on Reel)



---

## Documents & Resources

### Drawings

[1053131105\\_sd.pdf](#)

[PK-105309-400-000.pdf](#)

### 3D Models and Design Files

[STEP AP242](#)

[SOLIDWORKS](#)

[Creo](#)

[Symbol and Footprint \(Multi-Format\)](#)

[SYM-105313-XX05-001.zip](#)

### Specifications

[AS-105300-100-001.pdf](#)

[1053001000-PS-CH-000.pdf](#)

[1053001000-PS-ES-000.pdf](#)

[1053001000-PS-JP-000.pdf](#)

[1053001000-PS-SK-000.pdf](#)

[PS-105300-100-001.pdf](#)


[1053001000-TS-000.pdf](#)

---

## Product Environment Compliance

### Compliance

GADSL/IMDS	Compliant with Exemption 44; 33
------------	---------------------------------

China RoHS	per SJ/T 11365-2006 
EU ELV	Not Relevant
Low-Halogen Status	Low-Halogen per IEC 61249-2-21
REACH SVHC	Not Contained per D(2024)7663-DC (21 Jan 2025)
EU RoHS	Compliant per EU 2015/863

### Compliance Statements

- EU RoHS
- REACH SVHC
- Low-Halogen

### Industry Documents

- IPC 1752A Class C
- IPC 1752A Class D
- Molex Product Compliance Declaration
- IEC-62474
- chemSHERPA (xml)

### Substances of Interest

- PFAS

### EU RoHS Certificate of Compliance

### Additional Product Compliance Information

---

## Part Details

### General

Status	Active
Category	PCB Headers and Receptacles
Series	105313
Description	Nano-Fit Right-Angle Header, Through Hole, 2.50mm Pitch, Single Row, 5 Circuits, Tin (Sn) Plating, Black, Glow-Wire Capable, Tray
Application	Power, Wire-to-Board
Component Type	PCB Header
Product Name	Nano-Fit
UPC	887191928937

### Agency

CSA	LR19980
UL	E29179

## Electrical

Current - Maximum per Contact	8.0A
Voltage - Maximum	250V AC (RMS)/DC

## Physical

Breakaway	No
Circuits (Loaded)	5
Circuits (maximum)	5
Color - Resin	Black
Durability (mating cycles max)	25
First Mate / Last Break	No
Flammability	94V-0
Glow-Wire Capable	Yes
Guide to Mating Part	No
Keying to Mating Part	Yes
Lock to Mating Part	Yes
Material - Metal	Brass
Material - Plating Mating	Tin
Material - Plating Termination	Tin
Material - Resin	Liquid Crystal Polymer
Net Weight	0.630/g
Number of Rows	1
Orientation	Right Angle
Packaging Type	Tray
PCB Locator	Yes
PCB Retention	Yes
PCB Thickness - Recommended	1.60mm, 2.40mm
PC Tail Length	3.20mm
Pitch - Mating Interface	2.50mm
Pitch - Termination Interface	2.50mm
Plating min - Mating	1.524µm
Plating min - Termination	1.524µm

Polarized to Mating Part	Yes
Polarized to PCB	Yes
Shrouded	Yes
Stackable	No
Temperature Range - Operating	-40° to +125°C
Termination Interface Style	Through Hole

---

## Mates With / Use With

### Mates with Part(s)

Description	Part Number
Nano-Fit Receptacle Housing, TPA Capable, 2.50mm Pitch, Single Row, 5 Circuits, Black, Glow-Wire Capable	<u>1053071205</u>
Nano-Fit Receptacle Housing, TPA Capable, 2.50mm Pitch, Single Row, 5 Circuits, Black, Glow-Wire Capable, for UL 1569/1007 Wire	<u>2263541205</u>
Nano-Fit-to-Nano-Fit Single Row Off-the-Shelf (OTS) Cable Assemblies	<u>145130</u>