

Datasheet

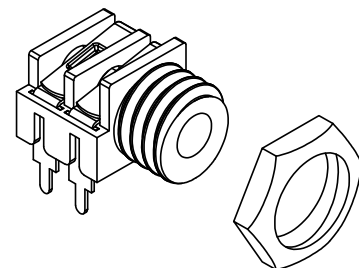
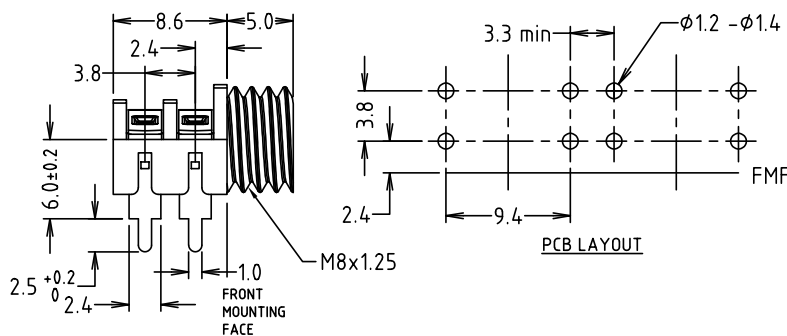
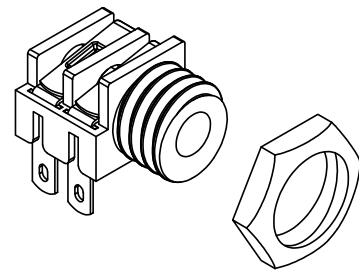
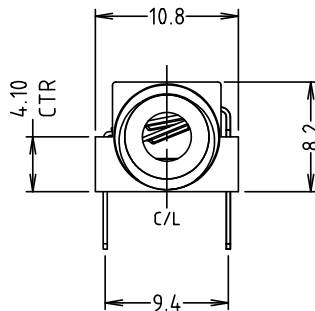
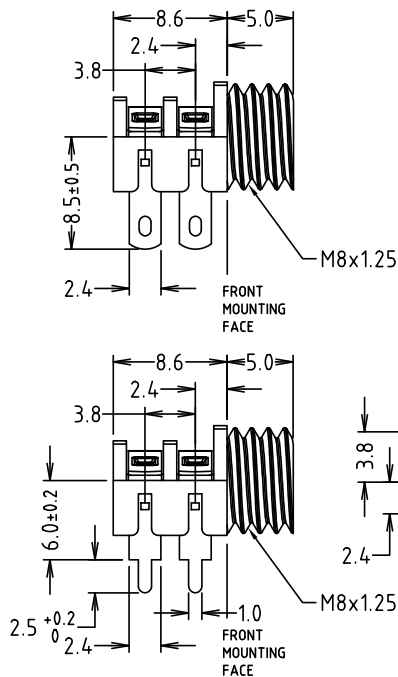
RS PRO 3.5mm MONO JACK SOCKETS

Stock number: 2035609, 2035613, 2035611, 2035612

EN

RS1382L - S6/BB Blue Solder Tag
RS1384L - S6/BB Blue PCB Tag

RS1382R - S6/BB Red Solder Tag
RS1384R - S6/BB Red PCB Tag



Notes:

- S6 Sockets are only guaranteed to perform the switch switch (SS) function. Users requiring break functions (B) must satisfy themselves that the product is suitable for their application. Cliff accepts no responsibility for use outside the (SS) function.
- Max panel thickness is 3.0mm.
- Material: Jack body - PP, Contacts - Nickel Silver / Tin plated.
- Supplied with 1 nut unassembled. Nut material: Brass / Nickel plated.

rspro.com