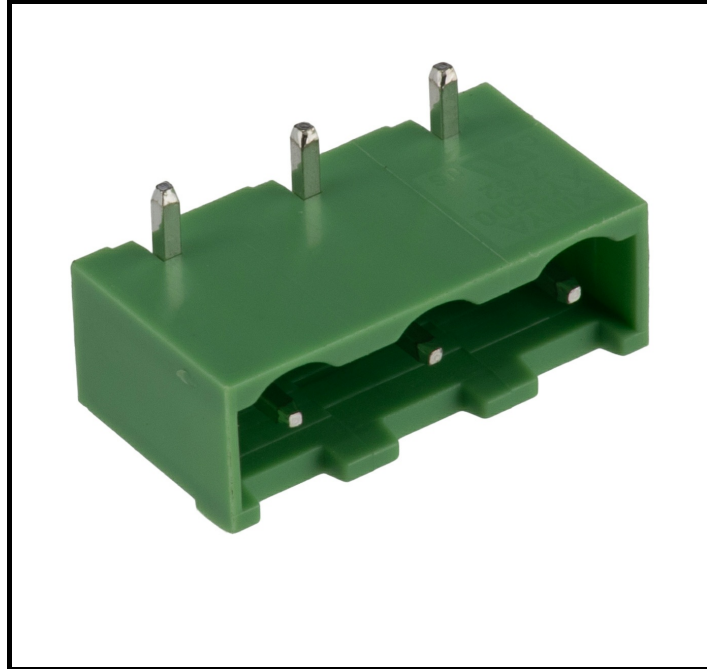


FEATURES

- **Board-to-Board Connector System:** Facilitates secure and efficient connections between PCBs.
- **Male Contact Gender:** Ensures compatibility with female connectors for seamless integration.
- **Brass Contact Material:** Provides excellent electrical conductivity and durability.
- **Tin Contact Plating:** Enhances corrosion resistance and ensures reliable performance.
- **Current Rating of 15 A:** Supports high power applications with ease.
- **PA66 Housing Material:** Offers high mechanical strength and thermal stability.
- **Operating Temperature Range from -40 °C to 105 °C:** Suitable for use in diverse environmental conditions.
- **Through Hole Mount Type:** Ensures strong mechanical attachment and easy soldering.
- **Shrouded Design:** Protects contacts from damage and ensures proper alignment.

RS PRO 3-Contact Shrouded PCB Header, Right Angle

RS Stock No: 631-111



RS Professionally Approved Products bring to you professional quality parts across all product categories. Our product range has been tested by engineers and provides a comparable quality to the leading brands without paying a premium price.

Product Description

This RS PRO PCB Header is designed for board-to-board connections, offering a robust solution for various electronic applications. With a right-angle orientation and a pitch of 7.62 mm, it ensures reliable connectivity and easy integration into your projects.

General Specifications

Connector System	Board-to-Board
Contact Gender	Male
Contact Material	Brass
Contact Plating	Tin
Mount Type	Through Hole
Number of Contacts	3
Number of Rows	1
Orientation	Right Angle
Product Type	PCB Header
Shrouded/Unshrouded	Shrouded
Tail Pin Length	3.7 mm

Electrical Specifications

Current	15 A
Voltage	300 V

Mechanical Specifications

Housing Material	PA66
Pitch	7.62 mm
Termination Type	Solder

Operation Environment Specifications

Maximum Operating Temperature	105 °C
Minimum Operating Temperature	-40 °C

Approvals

Standards/Approvals	ANSI-ESD S20.20:2021, CE, REACH, RoHS, UL
---------------------	---

