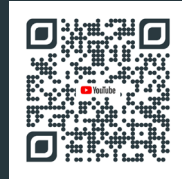


## BENEFITS : Epsivol is highly modular

- Compatible with 9 types of beams and 3 types of shelves
- Possibility to pre-assemble frames at the factory : 60% saving on assembly time
- Can be installed on multi-tier installations
- Beams compatible with the Epsirack pallet rack
- Other versions available : reduced size maximum height 3 meters (Epsivol One), work table (Epsitable), vertical storage (Epsivol vertical), secure storage (Epsivol secure mesh)
- Standard default colour, other colours on request



Product video

### FRAMES TECHNICAL CHARACTERISTICS :

- Epoxy Paint
- Standard finish RAL 7024 or galvanized for Epsivol One
- Uprights : 50x50x1,5 mm with a double front perforation every 50 mm
- Galvanized crossbars and diagonals profile « C » 25x15 mm
- Galvanized footplates 100x60x2 mm
- Height : from 1750 to 8500 mm by multiples of 250 mm
- Depth : from 400 to 1200 mm
- Up to 1500 kg per level, 4500 kg per bay

### BEAMS TECHNICAL CHARACTERISTICS :

- Epoxy Paint
- Standard finish RAL 7035
- Connectors : 3 fixings
- Safety pins
- Support beams : Depth 400 to 1200 mm mandatory for length > 2500 mm and depth > 800 mm
- Length : from 1000 to 3000 mm according to the beam type

### BEAM TYPES :

- 1 Rectangular with 3 sections : 50x30, 60x30, 80x40 mm
- Step beam : 45x36, 65x36, 85x36 mm to fix shelves
- 2 Perforated 65x36 mm to integrate separators
- « Z » profile 107x36 mm to integrate chipboard
- 3 Oval shape hanger beams 40x20 mm to hang clothes
- 4 Angled tyre beams 70x43 mm suiting the tire shape

Usable length = beam length

Overall upright length =

For the starting bay : beam length + 100 mm

For the extension bay : beam length + 50 mm

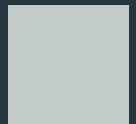
Overall footplate length =

For the starting bay : beam length + 160 mm

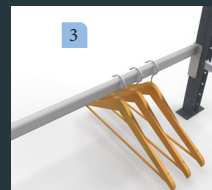
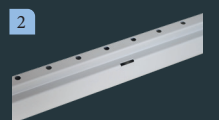
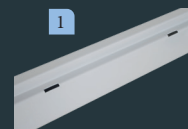
For the extension bay : beam length + 50 mm



RAL 7024



RAL 7035



## MAXIMUM PERMISSIBLE LOAD CAPACITIES PER PAIR OF BEAMS

| LENGTH (MM)           | 1000    | 1250    | 1500    | 1800    | 2000    | 2250    | 2500    | 2700    | 3000   |
|-----------------------|---------|---------|---------|---------|---------|---------|---------|---------|--------|
| 50x30                 | 1004 kg | 802 kg  | 556 kg  | 386 kg  | 312 kg  | 246 kg  | 200 kg  | 170 kg  | 138 kg |
| 60x30                 | 1500 kg | 1354 kg | 1078 kg | 748 kg  | 606 kg  | 478 kg  | 388 kg  | 332 kg  | 268 kg |
| 80x40                 | 1500 kg | 1500 kg | 1500 kg | 1500 kg | 1500 kg | 1188 kg | 962 kg  | 826 kg  | 668 kg |
| Hanger beam 40x20     | 424 kg  | 326 kg  | 226 kg  | 156 kg  | 126 kg  | 100 kg  |         |         |        |
| Step 45x36            | 630 kg  | 533 kg  | 465 kg  | 384 kg  | 324 kg  |         |         |         |        |
| Step 65x36            | 1100 kg | 974 kg  | 792 kg  | 683 kg  | 633 kg  | 565 kg  | 470 kg  |         |        |
| Step 85x36            | 1500 kg | 1500 kg | 1500 kg | 1500 kg | 1409 kg | 1146 kg | 948 kg  | 832 kg  | 689 kg |
| «Z» 107x36            | 1500 kg | 1500 kg | 1500 kg | 1500 kg | 1500 kg | 1376 kg | 1252 kg | 1130 kg | 934 kg |
| Tyre beam 70x43       | 450 kg  | 300 kg  | 300 kg  | 240 kg  | 210 kg  | 180 kg  |         |         |        |
| Perforated step 65x36 | 880 kg  | 731 kg  | 633 kg  | 546 kg  | 506 kg  | 452 kg  | 376 kg  |         |        |

### SHELVES TYPES :

- Chipboard 19 mm, 2 sided uncoated, or white melaminated
- Galvanised steel sheet thickness 0,5 mm (modules of 99 and 124 mm)
- Electro zinc wire shelf diameter 0,5 mm, mesh 50 x 100 mm



### ACCESSORIES :

- Raw spacer
- Galvanized stops for shelves
- 1 Vertical dividers : tubes, wire or steel sheet
- Divider arms
- Horizontal dividers
- 2 Perforated steel sheets or mesh sides
- 3 Car mats / wardrobe supports
- 4 Tyre dividers
- 5 Front trims
- 6 Upright protectors and frame side guards
- 7 Exhaust support beams
- Mesh doors



### YOUR DISTRIBUTOR :

