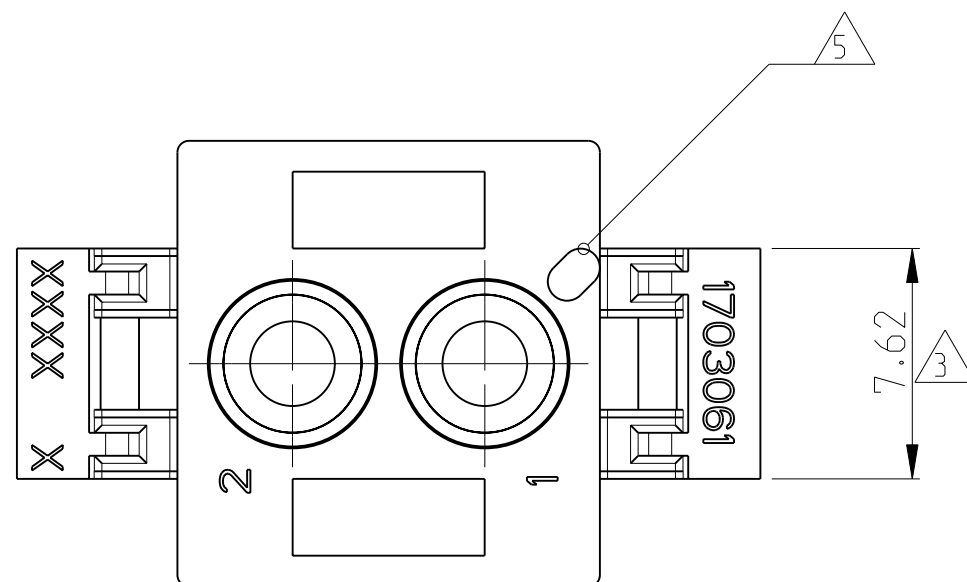
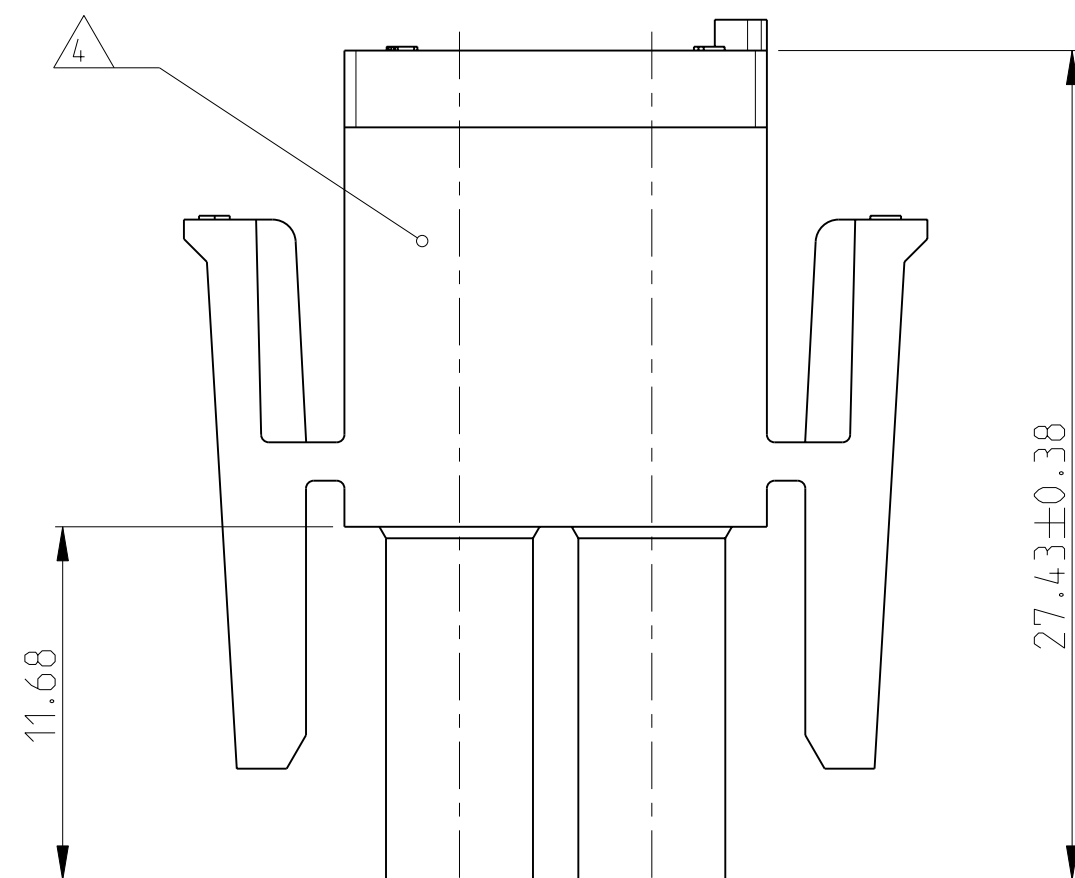
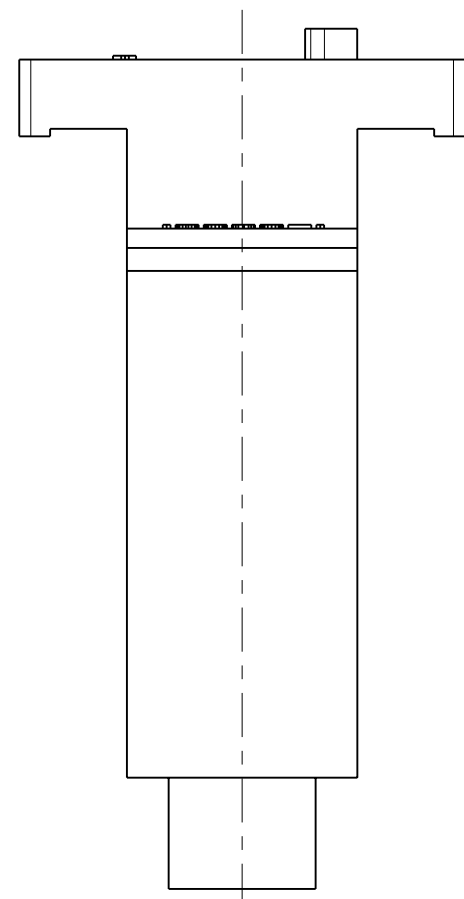
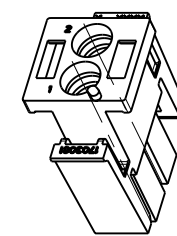


LOC	DIST	REVISIONS					
AI	2	P	LTR	DESCRIPTION	DATE	DWN	APVD
			A	NEW DRAWING CREATED	18MAR2004	MAH.	ZITZ
			B	ADDED DASHES: -2/-3/-4	17OCT2008	JS	PEG


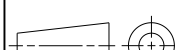


- 1 MATES WITH APPROPRIATE UNIVERSAL MATE-N-LOK CAP OR HEADER
- 2 SMALL NICKS ARE PERMITTED ON THE CIRCUIT TOWERS WHICH COULD INCREASE THE INITIAL HOUSING MATING FORCE BY UP TO 4.4 NEWTONS. NO INDIVIDUAL NICKED TOWER SHALL INCREASE THIS FORCE BY OVER 5.5 NEWTONS.
- 3 DIMENSION INDICATED IS AS MOLDED. ADDITIONAL GROWTH DUE TO SUBSEQUENT MOISTURE ABSORPTION MAY OCCUR
- 4 UNDERWRITERS RECOGNIZED COMPONENT LOGO AND CSA CERTIFICATION LOGO TO BE LOCATED ONCE ON ANY SIDE OF HOUSING
- 5 POSITION #1 LOCATOR FEATURE MAY BE ROUND OR OBLONG (AS DEPICTED)
- 6 MATERIAL CORRESPONDING TO THE REQUIREMENTS OF IEC 60335 (INCL. GLOW WIRE TEST 750 ° C, WITHOUT FLAME)



1:1

1703061-4	A	PA6 UL94 V2	BLACK
1703061-3	A	PA6 UL94 V2	RED
1703061-2	A	PA6 UL94 V2	BLUE
1703061-1	A	PA6 UL94 V2	NATURAL
PN	REV	MATERIAL	COLOUR

THIS DRAWING IS A CONTROLLED DOCUMENT FOR TYCO ELECTRONICS CORPORATION IT IS SUBJECT TO CHANGE AND THE CONTROLLING ENGINEERING ORGANIZATION SHOULD BE CONTACTED FOR THE LATEST REVISION.		DWN MAHNKE, B. 17-Oct-08		 Tyco Electronics Tyco Electronics AMP España, S.A. Barcelona, Spain.		REV 1		REV 2		REV 3		REV 4		REV 5	
DIMENSIONS:		TOLERANCES, UNLESS OTHERWISE SPECIFIED:				NAME		SIZE		CAGE CODE		DRAWING NO		RESTRICTED TO	
mm		0 PLC ± 1 PLC ± 2 PLC ±0.13 3 PLC ± 4 PLC ± ANGLES ±0°30'		CHK ZITZ, A. 26APR2004		PLUG, 2 CIRCUIT, UNIVERSAL MATE-N-LOK		A2		00779		C=1703061		-	
		PRODUCT SPEC -		APVD BLEICHER, M. 27APR2004		APPLICATION SPEC -		WEIGHT 2.422 g		SCALE 4:1		SHEET 1 OF 1		REV B	
MATERIAL 6 PA 6		FINISH -		CUSTOMER DRAWING											