

Data sheet

Commercial Art.No.: 96.041.4053.1

connector RST20I4S B1 ZR1 SW

RST® CLASSIC connector, straight, number of poles 4, female, connection type screw connection, rated voltage 250 V / 400 V, rated current 20 A, cable diameter 6 - 10 mm, color of coding/ contact carrier black



Commercial Art.No.	96.041.4053.1
EAN	4015573863200
Order Unit	1

certificates / approvals



Technical data

general

rated current	20 A
rated voltage	250 V / 400 V
rated impulse voltage	4 kV
strain relief	yes
pollution degree	3
lockable	self-locking (unlocking by tool)
color of coding/ contact carrier	black
marking of poles	1, 2, 3, PE
color of housing inclusive strain relief	black
RAL-Nummer Codierung/Kontakteinsatz	9005

connection data

cable diameter max.	10 mm
cable diameter min.	6 mm
connection cross section solid mm² max.	4 mm²
connection cross section solid mm² min.	0.75 mm²
connection cross section fine stranded mm² max.	4 mm²
connection cross section fine stranded mm² min.	0.75 mm²
terminations per pole	1
connection cross section stranded mm² min.	0.75 mm²
connection cross section stranded mm² max.	4 mm²
sheath strip length	26.5 mm
wire strip length	8 mm

technical data UL

rated voltage UL	600 V
------------------	-------

rated current UL	20 A
connection cross section solid AWG min.	18 AWG
connection cross section solid AWG max.	14 AWG
connection cross section stranded AWG min.	18 AWG
connection cross section stranded AWG max.	14 AWG
degree of protection (NEMA)	4, 4X, 6, 6P

model

model	female
connection type	screw connection
degree of protection (IP)	IP66/68 (3m;2h) /IP69

material

housing material	polyamide
halogen free	yes
contact material	CuZn
fire load	0.294 kWh/St
insulation components continuous temperature	100 °C
surface finish	silver-plated

dimensions

length	80.4 mm
width	34.6 mm
height	34.6 mm

note

note	RST® terminals with screw clamping allow the connection of conductors without special preparation (without ferrules) according to EN 60999-1.
------	---

classification

ECLASS 11	
ECLASS 8.1	27440605
ETIM 9.0	EC002560
ETIM 8.0	EC002560
ETIM 7.0	EC002560
ETIM 6.0	EC002560
ETIM 5.0	EC002560
ETIM 4.0	EC002560

product compliance

ROHS conformity status	compliant/exempted
ROHS exceptions	III-6(c)
REACH-SVHC conformity status	Duty-To-Declare
REACH-SVHC substances	Lead
REACH-SVHC CAS numbers	7439-92-1

Accessories

Commercial Art.No.:	Article-type description:	Description:
------------------------	---------------------------	--------------

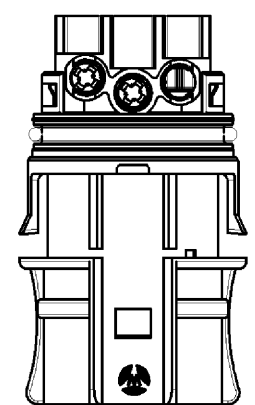
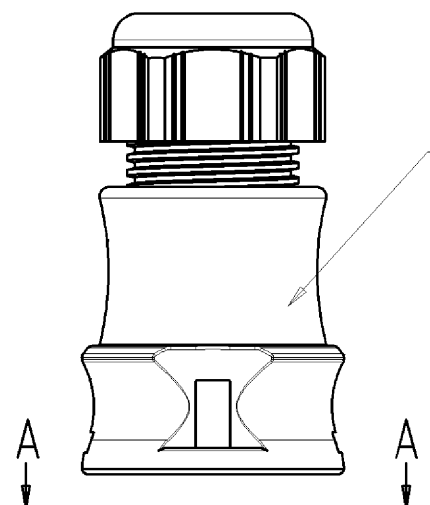
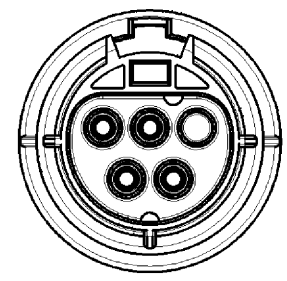
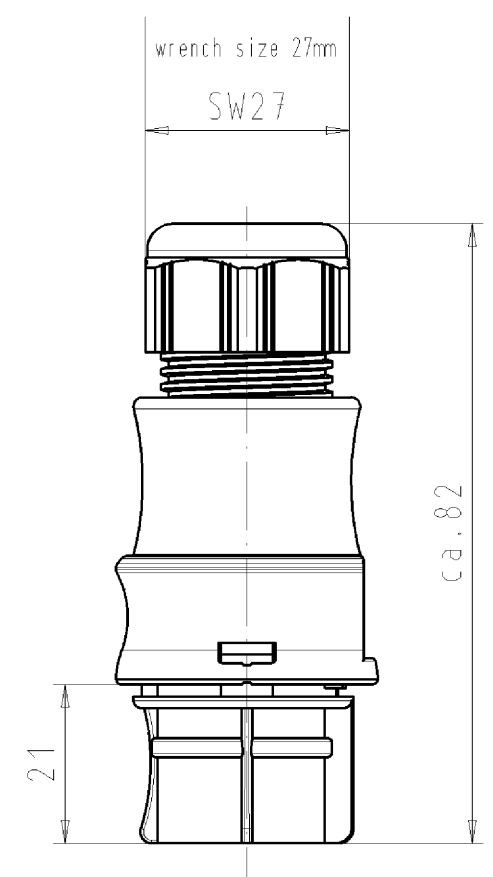
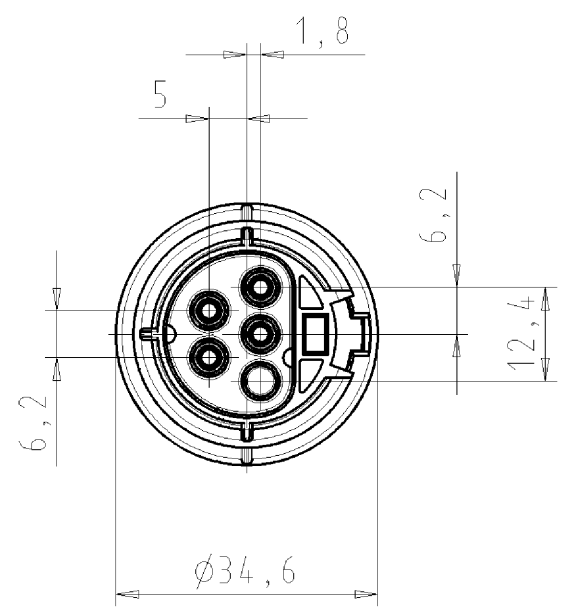
99.530.0000.7	cover for female connector SW	RST20i5/4 cover piece, for covering unused female connectors, with fastening belt, color black
Z5.565.9853.1	cover for female connector SW	RST20i5/4 cover piece, for covering unused female connectors, color black
05.564.8653.1	manual disconnect RST20i3/i5 SCHWARZ	Manual disconnect for later installation of RST connectors, color black

Fits with

Commercial Art.No.:	Article-type description:	Description:
96.042.4053.1	connector RST20I4S S1 ZR1 V SW	RST® CLASSIC connector, straight, number of poles 4, male, connection type screw connection, rated voltage 250 V / 400 V, rated current 20 A, cable diameter 6 - 10 mm, color of coding/ contact carrier black
96.044.4053.1	connector RST20I4S S1 YR1 V SW	RST® CLASSIC connector, angled 90°, number of poles 4, male, connection type screw connection, rated voltage 250 V / 400 V, rated current 20 A, cable diameter 6 - 10 mm, color of coding/ contact carrier black
96.042.5053.1	device connector RST20I4S S1 M01V SW	RST® CLASSIC device connector, standard, straight, M25, number of poles 4, model male, connection type screw connection, rated voltage 250 V / 400 V, rated current 20 A, color of coding/ contact carrier black
96.042.6153.1	device connector RST20I4S S1 M03V SW	RST® CLASSIC device connector, modular, straight, M16, number of poles 4, model male, connection type screw connection, rated voltage 250 V / 400 V, rated current 20 A, color of coding/ contact carrier black
96.042.6053.1	device connector RST20I4S S1 M00V SW	RST® CLASSIC device connector, modular, straight, M20, number of poles 4, model male, connection type screw connection, rated voltage 250 V / 400 V, rated current 20 A, color of coding/ contact carrier black
96.044.6053.1	device connector RST20I4S S1 M90V SW	RST® CLASSIC device connector, modular, angled 90°, M20, number of poles 4, model male, connection type screw connection, rated voltage 250 V / 400 V, rated current 20 A, color of coding/ contact carrier black
96.044.6253.1	device connector RST20I4S S1 M91V SW	RST® CLASSIC device connector, modular, angled 90°, M25, number of poles 4, model male, connection type screw connection, rated voltage 250 V / 400 V, rated current 20 A, color of coding/ contact carrier black
96.046.6153.1	device connector RST20I4S S1 M13V SW	RST® CLASSIC device connector, modular, angled 7°, M16, number of poles 4, model male, connection type screw connection, rated voltage 250 V / 400 V, rated current 20 A, color of coding/ contact carrier black
99.911.0000.7	distributor RST20I4B 3P1 F G SW	RST® CLASSIC distributor, parallel connection, with fastening option, number of poles 4, rated voltage 250 V / 400 V, rated current 20 A, number of inputs 1, number of outputs 3, color of coding/ contact carrier black

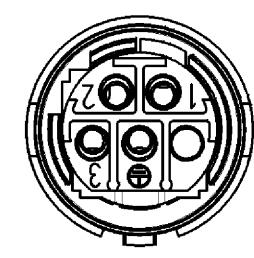
These dimensions will be especially checked at delivery
Only inspection dimensions
With /E marked dimensions are only valid for internal use

Diese Maße werden bei Abnahme besonders geprüft
Ausschließlich Prüfmaße
M11 /E gekennzeichnete Maße sind nur für interne Zwecke gültig

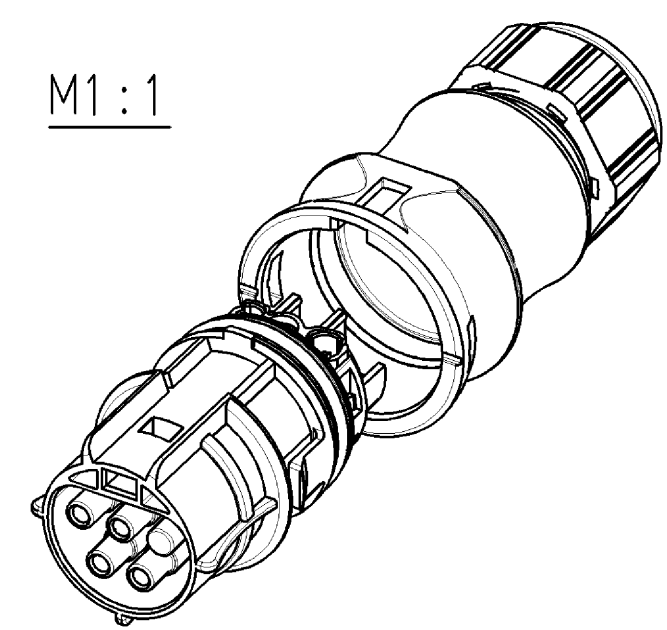


a



A - A



M1 : 1



Teile-Nr./ part-nr.	Farbe:/ color:	Type
96.041.4053.1	schwarz, ähnl. RAL 9005/ black, similar to RAL 9005	RST2014S B1 ZR1 V SW
96.041.4053.0	lichtgrau, ähnl. RAL 7035/ lightgrey, similar to RAL 7035	RST2014S B1 ZR1 V GL

Tolerierung nach DIN 7167/Tolerance system acc. to DIN 7167. (This DIN-standard describes the envelope principle. According to the envelope principle the deviations of form and parallelism are limited by the size tolerances).					nein/no <input checked="" type="checkbox"/> Stoffverbots- und Deklarationsliste nach UU-TQM-05/03 ist einzuhalten. Conformity with Wieland document UU-TQM-05/03 (list of prohibited / declaimable hazardous substances) to be declared!					
Freitoleranz nach General tolerance			CAD - Zeichnung, keine manuellen Änderungen CAD - drawing, no manual modifications allowed			1.Verwendung: First Use:		Blatt: 1 von 1 Sheet: 1 of 1		
	/		Werkstoff/Material		2005	Tag/Date	Name	T	Zeichnung Nr./Drawing No. 96.041.4053.0 01K	Index a
	/				gezeichnet drawn	29.08.	Kneitz			
	/		Maßstab/Scale		geprüft checked	-	-			
	/		1:1		Normgepr. Stand. check	-	-			
Maße in mm/Dimensions are in mm										
	/	Vol.	mm³	Off./Surf.	mm²	Ersatz für/Replacement for: -				
	/	 wieland			Type	Benennung/Title				
a	07.12.2005/				BUCHSENTEIL MIT ZUGENTLASTUNG female connector with cord grip Schraubanschluß ohne Drahtschutz/ screw-connection without wire protection Standardkodierung 0/standard-keying 0 (250V/400V/20A)					
Index	Datum / Blatt Date / Sheet									
Änderung/Revision		Elektrische Verbindungen			siehe Tabelle					

Weitergabe sowie Vervielfältigung dieses Dokuments, Verwertung und Mitteilung
seiner Inhalte sind verboten, soweit nicht ausdrücklich gestattet.
The reproduction, distribution and utilization of this document as well as the
communication of its contents to others without express authorization is prohibited.